



COPADATA
do it your way

zenon driver manual

EibV2_32

v.7.00



© 2012 Ing. Punzenberger COPA-DATA GmbH

All rights reserved.

Distribution and/or reproduction of this document or parts thereof in any form are permitted solely with the written permission of the company COPA-DATA. The technical data contained herein has been provided solely for informational purposes and is not legally binding. Subject to change, technical or otherwise.

Contents

1. Welcome to COPA-DATA help	5
2. EibV2_32	5
3. EIBV2_32 - Data sheet.....	6
4. Driver history	7
5. Requirements.....	7
5.1 PC	8
5.2 Runtime.....	8
6. Configuration	9
6.1 Creating a driver.....	9
6.2 Settings in the driver dialog	10
6.2.1 General	11
6.2.2 Driver dialog EIBV2 Settings	14
7. Creating variables.....	25
7.1 Creating variables in the Editor.....	25
7.2 Addressing.....	28
7.3 Driver objects and datatypes	28
7.3.1 Driver objects	29
7.3.2 Mapping of the data types	29
7.4 Creating variables by importing	30
7.4.1 XML import of variables from another zenon project.....	31
7.4.2 DBF Import/Export	31
7.4.3 Online import	37
7.5 Driver variables	42
8. Driver-specific functions	47
9. Driver commands	49
10. Error analysis.....	51

10.1	Possible error sources	51
10.2	Analysis tool	51
10.3	Check list	53

1. Welcome to COPA-DATA help

GENERAL HELP

If you miss any information in this help chapter or have any suggestions for additions, please feel free to contact us via e-mail: documentation@copadata.com (<mailto:documentation@copadata.com>).

PROJECT SUPPORT

If you have concrete questions relating to your project, please feel free to contact the support team via e-mail: support@copadata.com (<mailto:support@copadata.com>)

LICENSES AND MODULES

If you realize that you need additional licenses or modules, please feel free to contact the sales team via e-mail: sales@copadata.com (<mailto:sales@copadata.com>)

2. EibV2_32

Driver for the communication with the European Installation Bus (EIB/KNX). During the Runtime the driver needs the Falcon Runtime and the software SQLANY (part of the ETS software) for the database access in the Editor. The COPA-DATA item "ZT-FalconRT" must be ordered separately.

3. EIBV2_32 - Data sheet

General:	
Driver file name	EIBV2_32.exe
Driver description	EIB-KNX bus driver
PLC types	EIB/KNX capable stations
PLC manufacturer	EIB; KNX;

Driver supports:	
Protocol	EIB Bus;
Addressing: address based	x
Addressing: name based	-
Spontaneous communication	x
Polling communication	x
Online browsing	-
Offline browsing	x
Real-time capable	-
Blockwrite	-
Modem capable	-
Serial logging	-
RDA numerical	-
RDA String	-

Prerequisites:	
Hardware PC	RS 232 serial interface; standard network LAN adapter
Software PC	For engineering: EIB development software ETS2 or ETS3 with matching communication dll "etesvr32.dll"; For the Runtime: Interface program Falcon Runtime and SQLANY50 for database communication .
Hardware PLC	For communication over TCP/IP: Siemens TCP/IP - EIB interface card: 5WG1 146-3AB01
Software PLC	-
Requires v-dll	x

Platforms:	
Operating systems	Windows XP, Vista, 7, Server 2003, Server 2008/R2;
CE platforms	-;

4. Driver history

Date	Driver version	Change
07.07.08	1000	Created driver documentation

5. Requirements

This chapter contains information on the requirements that are necessary for use of this driver.

5.1 PC

The PC on which the zenon development environment (Editor) is to be installed, the EIB-engineering software ETS2 (ETS20.EXE) or ETS3 has to be installed. Thus the variable definitions can be taken from the ETS database. The ETS2 database is not required for Runtime.

SOFTWARE INSTALLATION

If you want to take variables from the ETS database, the following installation is necessary.

- ▶ EIB engineering software ETS 2 or ETS 3.
- ▶ You need the “Falcon Runtime License” for the communication during the Runtime. After an ETS2 installation since version 1.2 Falcon can already exist on your computer. The Falcon software is delivered on the EIB driver CD.
- ▶ Depending on the used ETS database the according ETESVR32.DLL has to be copied into the installation directory of the ETS database and to be registered with regsrv32.
- ▶ You will find the correct ETESVR32.DLL for your ETS database on the control system installation CD under Software\\Driver_3rd_party_software\\European Installation Bus.
- ▶ For version ETS2: Unzip the software for the data base access SQLANY50.ZIP into the ETS2 directory. For ETS3, SQLANY80 is used, which is automatically installed with ETS3.

For online import, the file `EIBv2_DB.d11` must be present in the zenon folder.

Note: If the driver has not been installed with the setup program, please copy `Eibv2_32.exe` to the current zenon installation folder and then add it to the `TREIBER_EN.XML` with the `Driverinfo.exe` tool.

5.2 Runtime

Runtime needs the interface program Falcon from EIBA (see software installation section in PC (on page 8) chapter).

6. Configuration

In this chapter you will learn how to use the driver in a project and which settings you can change.



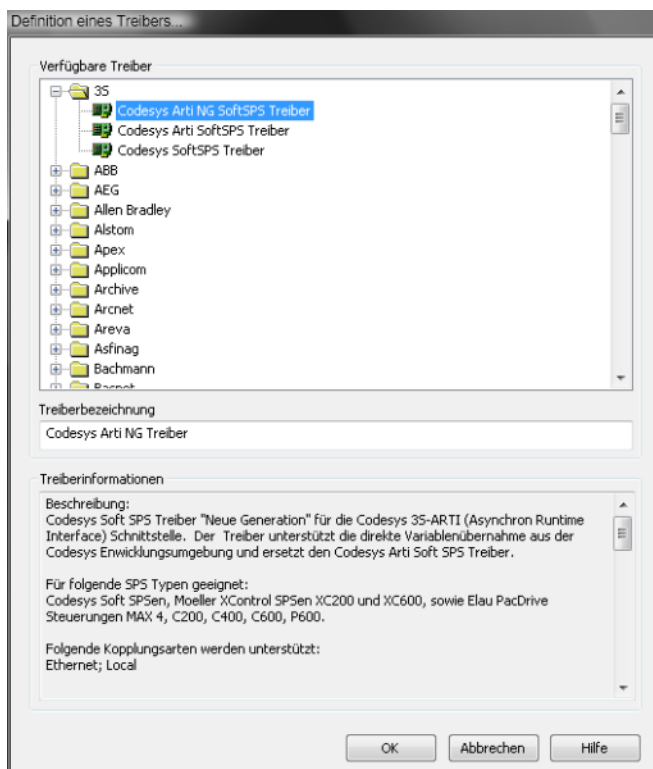
Info

Find out more about further settings for zenon variables in the chapter Variables (main.chm::/15247.htm) of the online manual.

6.1 Creating a driver

In order to create a new driver:

- ▶ Right-click on **Driver** in the Project Manager and select **Driver new** in the context menu.
- ▶ In the following dialog the control system offers a list of all available drivers.



- ▶ Select the desired driver and give it a name:

- The driver name has to be unique, i.e. if one and the same driver is to be used several times in one project, every time a new name has to be given each time.
 - The driver name is part of the file name. Therefore it may only contain characters which are supported by the operating system. Invalid characters are replaced by an underscore (_).
 - **Attention:** This name cannot be changed later on.
- Confirm the dialog with **OK**. In the following dialog the single configurations of the drivers are defined.
- Only the respective required drivers need to be loaded for a project. Later loading of an additional driver is possible without problems.

**Info**

For new projects and for existing projects which are converted to version 6.21 or higher, the following drivers are created automatically:

- Internal
- MathDr32
- SysDrv.

6.2 Settings in the driver dialog

You can change the following settings of the driver:

- General (on page 11)
- EIBV2 Settings (on page 14)


**Info**

The driver configuration must be opened and confirmed on the actual Runtime computer.

6.2.1 General

Configuration

General



Mode:

Hardware

☐ Keep update list in memory

☐ Outputs writeable

☐ Variable image remanent

☐ Stopped on Standby-Server

☒ Update time global

Global updatetime in ms:

1000

Priority

normal:

1000

ms

high:

500

ms

higher:

300

ms

highest:

100

ms

OK

Cancel

Help

Parameters	Description
Mode	<p>Allows to switch between hardware mode and simulation mode</p> <ul style="list-style-type: none"> ▶ Hardware: A connection to the control is established. ▶ Simulation static No communication between to the control is established, the values are simulated by the driver. In this modus the values remain constant or the variables keep the values which were set by zenon Logic. Each variable has its own memory area, e.g. two variables of the type marker with offset 79 can have different values in the Runtime and do not influence each other. Exception: The simulator driver. ▶ Simulation - counting No communication between to the control is established, the values are simulated by the driver. In this modus the driver increments the values within a value range automatically. ▶ Simulation - programmed N communication is established to the PLC. The values are calculated by a freely programmable simulation project. The simulation project is created with the help of the zenon Logic Workbench and runs in a zenon Logic Runtime which is integrated in the driver. For details see chapter Driver simulation (main.chm::/25206.htm).
Keep update list in the memory	<p>Variables which were requested once are still requested from the control even if they are currently not needed.</p> <p>This has the advantage that e.g. multiple screen switches after the screen was opened for the first time are executed faster because the variables need not be requested again. The disadvantage is a higher load for the communication to the control.</p>
Output can be written	<p>Active: Outputs can be written.</p> <p>Inactive: Writing of outputs is prevented.</p> <p>Note: Not available for every driver.</p>

Variable image remanent	<p>This option saves and restores the current value, time stamp and the states of a data point.</p> <p>Fundamental requirement: The variable must have a valid value and time stamp.</p> <p>The variable image is saved in mode hardware if:</p> <ul style="list-style-type: none"> ▶ one of the states S_MERKER_1(0) up to S_MERKER8(7), REVISION(9), AUS(20) or ERSATZWERT(27) is active <p>The variable image is always saved if:</p> <ul style="list-style-type: none"> ▶ the variable is of the object type <code>Driver variable</code> ▶ the driver runs in simulation mode. (not programmed simulation) <p>The following states are not restored at the start of the Runtime:</p> <ul style="list-style-type: none"> ▶ SELECT(8) ▶ WR-ACK(40) ▶ WR-SUC(41) <p>The mode Simulation - programmed at the driver start is not a criterion in order to restore the remanent variable image.</p>
Stop at the Standby Server	<p>Setting for redundancy at drivers which allow only on communication connection. For this the driver is stopped at the Standby Server and only started at the upgrade.</p> <p>Attention: If this option is active, the gapless archiving is no longer guaranteed.</p> <p>Active: Sets the driver at the not-process-leading Server automatically in a stop-like state. In contrast to stopping via driver command, the variable does not receive status switched off (<code>statusverarbeitung.chm: :/24150.htm</code>) but an empty value. This prevents that at the upgrade to the Server irrelevant values are created in the AML, CEL and Historian.</p>
Global Update time	<p>Active: The set <code>Global update time</code> in ms is used for all variables in the project. The priority set at the variables is not used.</p> <p>Inactive: The set priorities are used for the individual variables.</p>
Priority	<p>Here you set the polling times for the individual priorities. All variables with the according priority are polled in the set time. The allocation is taken</p>

	place for each variable separately in the settings of the variable properties. The communication of the individual variables are graduated in respect of importance or necessary topicality using the priorities. Thus the communication load is distributed better.
--	--

UPDATE TIME FOR CYCLICAL DRIVER

The following applies for cyclical drivers:

For **Set value**, **Advising** of variables and **Requests**, a read cycle is immediately triggered for all drivers - regardless of the set update time. This ensures that the value is immediately available for visualization after writing. Update times can therefore be shorter than pre-set for cyclical drivers.

6.2.2 Driver dialog EIBV2 Settings

Falcon Control, used for communication with the EIB bus uses the "Connection Manager" to administer and configure all communication protocols from version 1.23 onwards. This means that there are two possibilities for configuration:

- ▶ Configuration with Falcon Connection Manager
- ▶ Configuration using zenon dialog

1. FALCON CONNECTION MANAGER

If the version of Falcon that is installed already supports the Connection Manager, the Falcon Connection Manager is called up. All interfaces and protocols that the installed version of Falcon supports can be used by the driver.

Note: Not all versions of Falcon support all interfaces and protocols.

The Connection Manager provides three pieces of information back to the selected interface:

1. Name for the selected connection,
2. A unique identification (GUID) of the selected interface
3. String with the connection data

These are then saved in the driver configuration and used in Runtime to establish a connection.

 **Attention**

Note when using the Falcon Connection Manager:

- ▶ Determine the version history before selecting the Falcon version and note the Falcon system requirements. Not all Falcon versions run on all operating systems!
- ▶ Because the Connection Manager is part of Falcon Control, a suitable version of Falcon must also be installed on the Editor computer with the new driver versions. This version must be able to edit the interfaces and protocols used in Runtime.
- ▶ Only use current drivers. Older driver versions are not compatible with the new settings.

CONVERSION OF FALCON VERSIONS

If a newer version is installed on a computer that previously had a version of Falcon without Connection Manager, the previous configured settings for the use of the Connection Manager are converted when the configuration dialog is opened.

A connection that corresponds to the configured settings is searched for in the Connection Manager. If such a connection does not exist, a new one is created and selected.

Settings for interfaces and protocols that are also supported by previous versions continue to be saved in the previous format.

 **Attention**

Falcon versions that support the Connection Manager but not the more recent interfaces and protocols are sometimes not familiar with interfaces configured with more recent versions of Falcon.

These interfaces therefore cannot be used or configured by older versions.

Establishment of the connection with these protocols in Runtime then fails; the variables are set to "invalid".

CONFIGURATION

See Configuration with Falcon Connection Manager (on page 16) section.

2. ZENON DIALOG

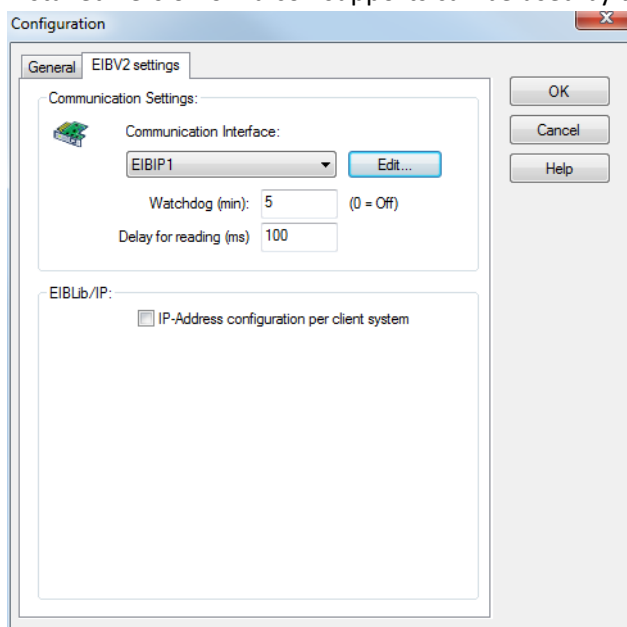
If a Falcon Control is used that does not support the Connection Manager yet (version prior to 1.23), only the rzenon configuration dialog is displayed. Then only the interfaces and protocols offered by this dialog can be used or configured: PEI16, PEI10 and EIBlib/IP.

CONFIGURATION

See Configuration without Falcon Connection Manager (on page 22) section.

Configuration with Falcon Connection Manager

If the version of Falcon installed already supports the Connection Manager (from 1.23), configuration is carried out using the Falcon Connection Manager (on page 17). All interfaces and protocols that the installed version of Falcon supports can be used by the driver.



Parameters	Description
Communication interface	Selection of the connection using a drop-down list: If no connection is offered, a new connection must be created by clicking on the Edit button.
Edit	Opens the Falcon Connection Manager (on page 17) to create new connections or to edit existing ones.

	The connections that are available depend on the Falcon version that is installed.
Watchdog (min)	<p>Checking interval in minutes: checks whether the bus partners are accessible.</p> <p>Default: 5</p> <p>Off: 0</p>
Lag time at reading (ms)	<p>Every 30 seconds the driver lists all values for which no valid value is available yet. If many values are outstanding, the reading can lead to very high data traffic.</p> <p>Active: Between the individual values the reading is delayed by the set value.</p> <p>Default: 100 ms</p>
IP address configuration via client computer	<p>Active: Configuration of the IP address is possible for up to eight different gateways.</p> <p>For details, see IP configuration using Client (on page 23) section.</p>

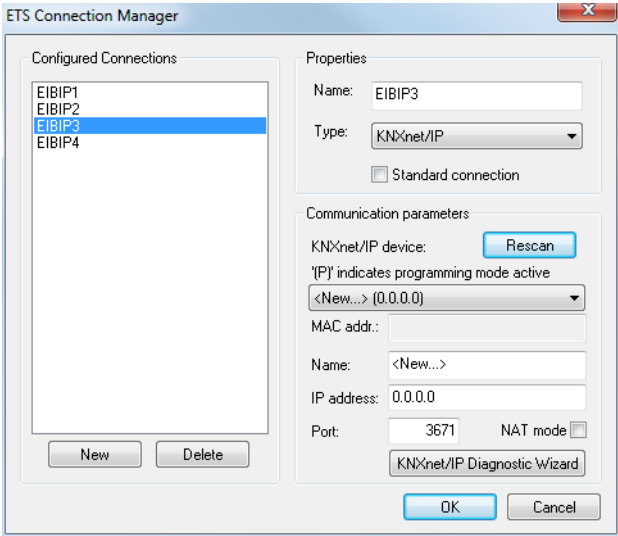
Falcon Connection Manager

The connections that are available depend on the Falcon version that is installed. The following configuration is therefore an example.

The following applies for all dialogs:

- ▶ **New** button: Configures new connection
- ▶ **Delete** button: Highlighted connection is deleted
- ▶ **OK** button: Accepts settings for highlighted connection and closes Connection Manager
- ▶ **Cancel** button: Discards settings for highlighted connection and closes Connection Manager
- ▶ The highlighted connection can be edited

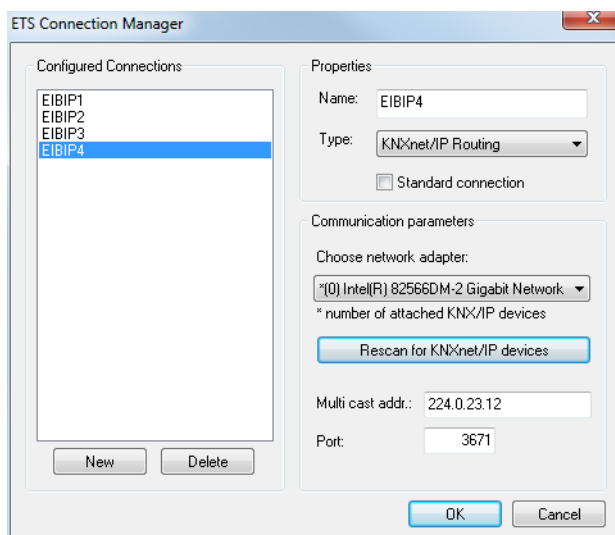
KNXNET/IP



Parameters	Description
Name	Name of the connection as it is displayed in the drop-down list.
Type	KNXnet/IP. Selection from drop-down list.
Standard connection	This connection is pre-selected in the drop-down list of the communication interface.
Communication parameter	Settings for communication

KNXnet/IP device	Settings for the device.
Scan again	Searches for devices in the network.
Device drop-down list	List of all available devices.
MAC-Adr.:	MAC address of the selected device.
Name	Name of the device
IP address	IP address
Port	Port number
NAT mode	active: NAT is used. Default: inactive
KNXnet/IP Diagnosis Assistant	Starts the Diagnosis Assistant.

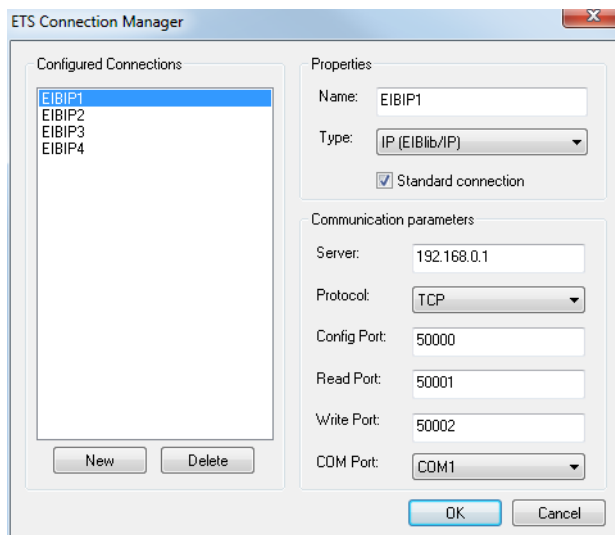
KNXNET/IP ROUTING



Parameters	Description
Name	Name of the connection as it is displayed in the drop-down list.
Type	KNXnet/IP routing. Selection from drop-down list.
Standard connection	This connection is pre-selected in the drop-down list

	of the communication interface.
Communication parameter	Settings for communication
Selecting the network adapter:	Selection of the network adapter from the drop-down list. The number in brackets shows the KNX/IP devices connected using the adapter.
Rescan for KNXnet/IP devices	Searches for devices in the network.
Device drop-down list	List of all available devices.
Multicast-Adr.:	Multicast addresse
Port	Port number

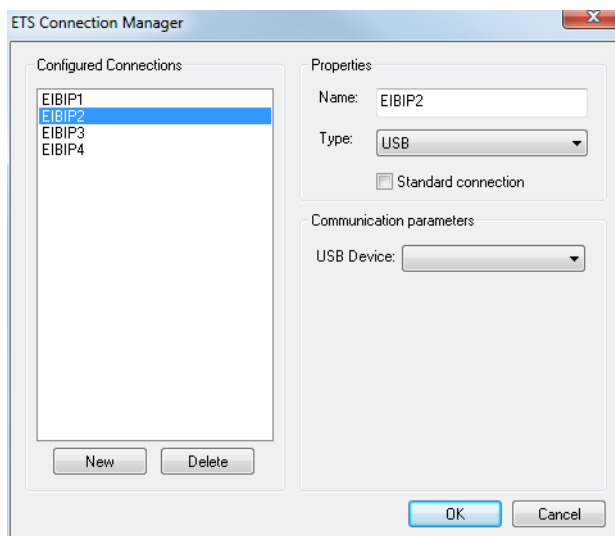
IP



Parameters	Description
Name	Name of the connection as it is displayed in the drop-down list.
Type	IP (EIBlib/IP) Selection from drop-down list.
Standard connection	This connection is pre-selected in the drop-down list of the communication interface.

Communication parameter	Settings for communication
Server	IP address of the server.
Protocol	Selection of the protocol: <ul style="list-style-type: none"> ▸ TCP ▸ UDP
Config. Port	Port number for configuration.
Read port	Port number for reading.
Write port	Port number for writing.
COM port	Selection of the COM port from the drop-down list.

USB

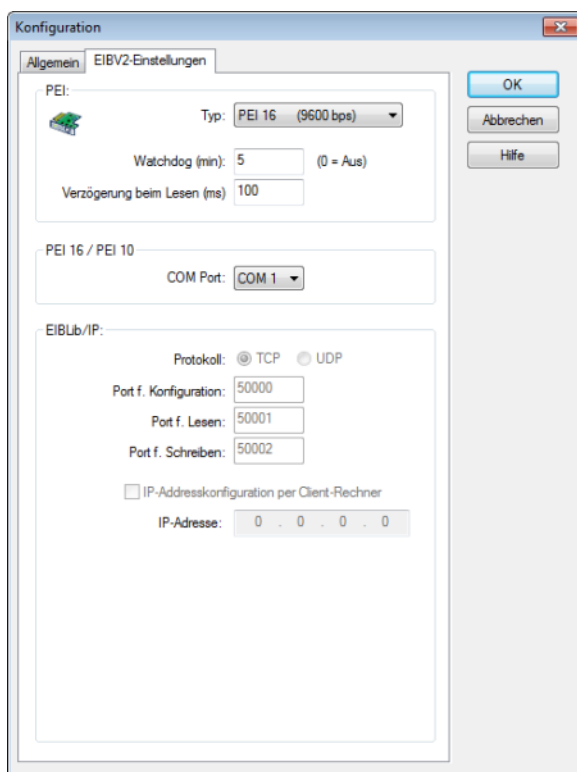


Parameters	Description
Name	Name of the connection as it is displayed in the drop-down list.
Type	KNXnet/IP. Selection from drop-down list:
Standard connection	This connection is pre-selected in the drop-down list of the communication interface.

Communication parameter	Settings for communication
USB device	Selection from drop-down list

Configuration without Falcon Connection Manager

If the Falcon Connection Manager is not available, the connection is configured in the zenon driver configuration, **EIBV2 settings** tab:



Parameters	Description
Type	Selection of the connections via drop-down list: <ul style="list-style-type: none"> ▶ PEI 16 with 9600 bps ▶ PEI 10 with 19200 bps ▶ EIBLib/IP via TCP/IP
Watchdog (min)	Checking interval in minutes: checks whether the bus partners are accessible.

	Default: 5 Off: 0
Lag time at reading (ms)	Every 30 seconds the driver lists all values for which no valid value is available yet. If many values are outstanding, the reading can lead to very high data traffic. Active: Between the individual values the reading is delayed by the set value. Default: 100 ms
PEI 16 / PEI 10	Settings for PAI 16 and PEI 10
COM port	Selection of the COM port from the drop-down list.
EIBLib/IP	Settings for connections via TCP/IP
Protocol	Selection of the protocol: <ul style="list-style-type: none"> ▶ TCP ▶ UDP
Port for configuration	Port number for configuration.
Port for reading	Port number for reading.
Port for writing	Port number for writing.
IP address configuration via client computer	Active: Configuration of the IP address is possible for up to eight different gateways. For details, see IP configuration using Client (on page 23) section.
IP address	IP address of the gateway for all devices

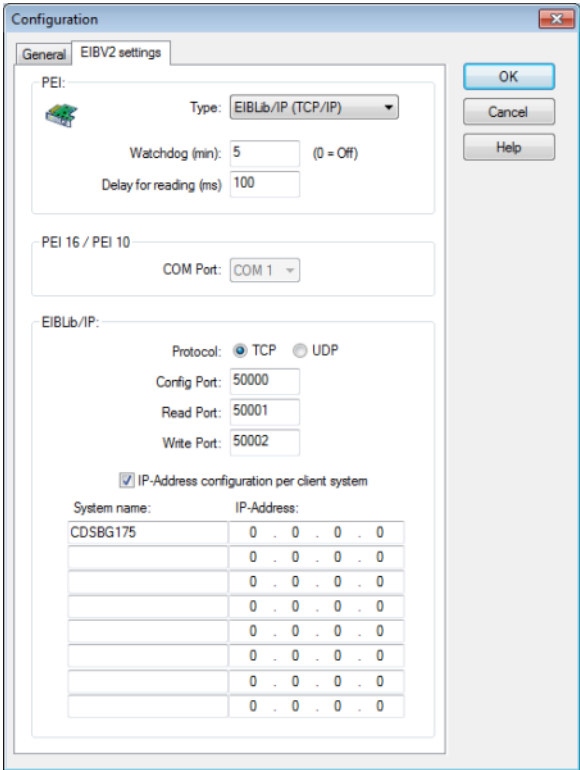
IP configuration via client

The client-specific provision of target IP addresses only applies for EIBLib/IP.

Gateways that support the more recent IP protocols (EIBnet/IP) allow several connections to the same IP address and do not require this configuration.

Configuration is carried out in the **EIBV2 settings** tab in the same way for:

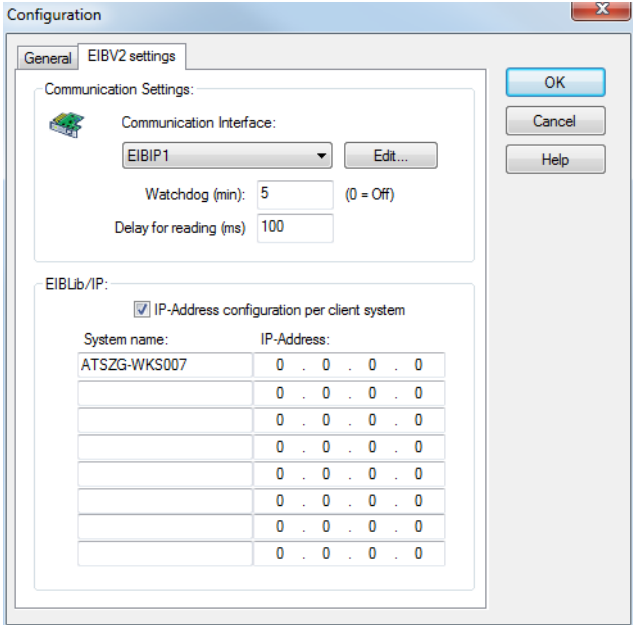
- Configuration without Falcon Connection Manager



The screenshot shows the 'Configuration' dialog box with the 'EIBV2 settings' tab selected. The 'General' sub-tab is active. The 'PEI' section shows a 'Type' dropdown set to 'EIBLib/IP (TCP/IP)'. Below it, 'Watchdog (min)' is set to 5 and 'Delay for reading (ms)' is set to 100. The 'PEI 16 / PEI 10' section shows a 'COM Port' dropdown set to 'COM 1'. The 'EIBLib/IP' section shows 'Protocol' set to 'TCP', 'Config Port' set to 50000, 'Read Port' set to 50001, and 'Write Port' set to 50002. A checkbox 'IP-Address configuration per client system' is checked. Below it is a table with 'System name' and 'IP-Address' columns.

System name:	IP-Address:
CDSBG175	0 . 0 . 0 . 0
	0 . 0 . 0 . 0
	0 . 0 . 0 . 0
	0 . 0 . 0 . 0
	0 . 0 . 0 . 0
	0 . 0 . 0 . 0
	0 . 0 . 0 . 0
	0 . 0 . 0 . 0

- And for Falcon Connection Manager



The screenshot shows the 'Configuration' dialog box with the 'EIBV2 settings' tab selected. The 'General' sub-tab is active. The 'Communication Settings' section shows a 'Communication Interface' dropdown set to 'EIBIP1' and an 'Edit...' button. Below it, 'Watchdog (min)' is set to 5 and 'Delay for reading (ms)' is set to 100. The 'EIBLib/IP' section shows a checkbox 'IP-Address configuration per client system' checked. Below it is a table with 'System name' and 'IP-Address' columns.

System name:	IP-Address:
ATSZG-WKS007	0 . 0 . 0 . 0
	0 . 0 . 0 . 0
	0 . 0 . 0 . 0
	0 . 0 . 0 . 0
	0 . 0 . 0 . 0
	0 . 0 . 0 . 0
	0 . 0 . 0 . 0
	0 . 0 . 0 . 0

Parameters	Description
IP address configuration via client computer	Active : Configuration of the IP address for up to eight different gateways.
Computer name	Name of the computer.
IP address	IP address of the gateway.

7. Creating variables

This is how you can create variables in the zenon Editor:

7.1 Creating variables in the Editor

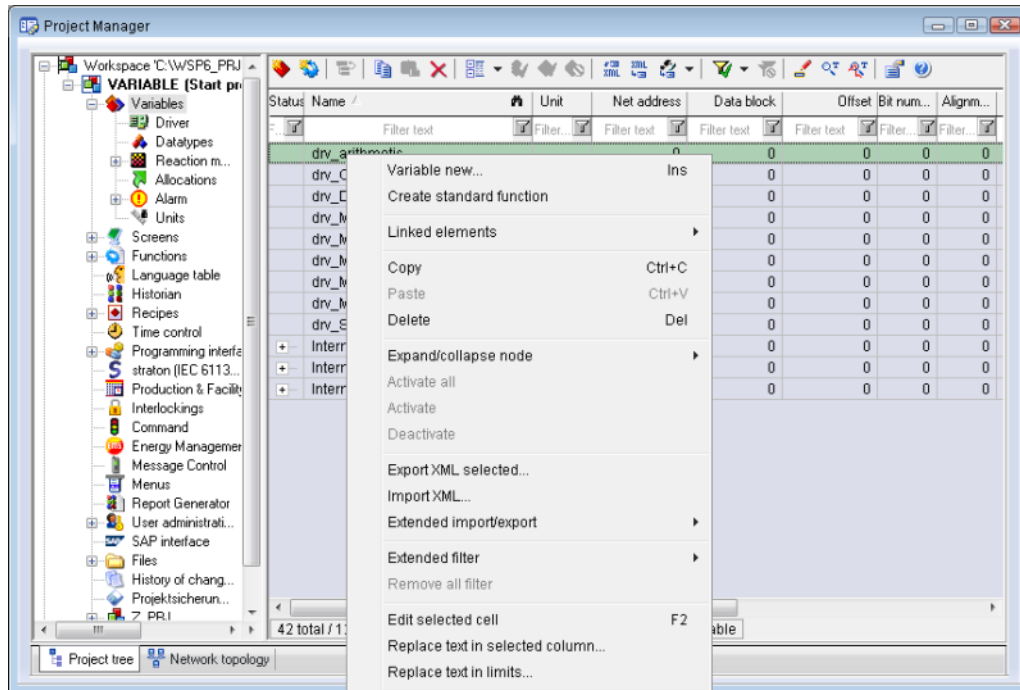
Variables can be created:

- ▶ as simple variables
- ▶ in arrays main.chm::/15262.htm
- ▶ as structure variables main.chm::/15278.htm

VARIABLE DIALOG

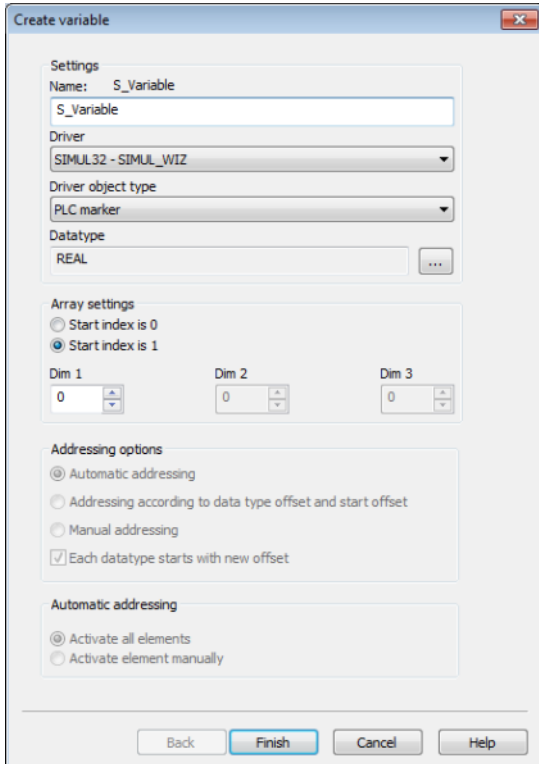
To create a new variable, regardless of which type:

1. Select the **New variable** command in the **variables** node in the context menu



2. The dialog for configuring variables is opened
3. configure the variable

4. The settings that are possible depends on the type of variables



Property	Description
Name	Distinct name of the variable. If a variable with the same name already exists in the project, no additional variable can be created with this name. Attention: The # character is not permitted in variable names. If non-permitted characters are used, creation of variables cannot be completed and the Finish button remains inactive.
Drivers	Select the desired driver from the drop-down list. Note: If no driver has been opened in the project, the driver for internal variables (Intern.exe (Main.chm::/Intern.chm::/Intern.htm)) is automatically loaded.
Driver object type (cti.chm::/28685.htm)	Select the appropriate driver object type from the drop-down list.

Data type	Select the desired data type. Click on the ... button to open the selection dialog.
Array settings	Expanded settings for array variables. You can find details in the Arrays chapter.
Addressing options	Expanded settings for arrays and structure variables. You can find details in the respective section.
Automatic element activation	Expanded settings for arrays and structure variables. You can find details in the respective section.

INHERITANCE FROM DATA TYPE

Measuring range, Signal range and Set value are always:

- ▶ derived from the datatype
- ▶ Automatically adapted if the data type is changed

Note for signal range: If a change is made to a data type that does not support the set `signal range`, the `signal range` is amended automatically. For example, for a change from **INT** to **SINT**, the `signal range` is changed to 127. The amendment is also carried out if the `signal range` was not inherited from the data type. In this case, the `measuring range` must be adapted manually.

7.2 Addressing

GROUP ADDRESSES

For Group addressing a main, middle, and sub group has to be defined. When accepting from the database the objects linked to the according group are displayed for information purposes.

7.3 Driver objects and datatypes

Driver objects are areas available in the PLC, such as markers, data blocks etc. Here you can find out which driver objects are provided by the driver and which IEC data types can be assigned to the respective driver objects.

7.3.1 Driver objects

The following object types are available in this driver:

Driver object type	Channel type	Read / Write	Supported data types	Comment
Group	80	R / W	REAL, BOOL, DINT, UDINT, INT, UINT, USINT, SINT	
Group 1-6 bit	83	R / W	USINT	
Group 16bit-float (EIS 5)	82	R / W	REAL	
Driver variable	35	R / W	BOOL, SINT, USINT, INT, UINT, DINT, UDINT, REAL, STRING	Variables for the statistical analysis of communication. Find out more in the chapter about the Driver variables (on page 42)

OBJECTS FOR PROCESS VARIABLES IN ZENON

Object	Read	Write	Comment
Group bit	Y	Y	
Group byte	Y	Y	
Group word	Y	Y	
Group doubleword	Y	Y	

7.3.2 Mapping of the data types

All variables in zenon are derived from IEC data types. The following table compares the IEC datatypes with the datatypes of the PLC.

PLC	zenon	Data type
	BOOL	8
	USINT	9
	SINT	10
	UINT	2
	INT	1
	UDINT	4
	DINT	3
	ULINT	27
	LINT	26
	REAL	5
	LREAL	6
	STRING	12
	WSTRING	21
	DATE	18
	TIME	17
	DATE_AND_TIME	20
	TOD (Time of Day)	19

Data type: The property `Data type` is the internal numerical name of the data type. It is also used for the extended DBF import/export of the variables.

7.4 Creating variables by importing

Variables can also be imported by importing them. The XML and DBF import is available for every driver.

7.4.1 XML import of variables from another zenon project

For the import/export of variables the following is true:

- ▶ The import/export must not be started from the global project.
- ▶ The start takes place via:
 - Context menu of variables or data type in the project tree
 - or context menu of a variable or a data type
 - or symbol in the symbol bar variables



Attention

When importing/overwriting an existing data type, all variables based on the existing data type are changed.

Example:

There is a data type XYZ derived from the type `INT` with variables based on this data type. The XML file to be imported also contains a data type with the name XYZ but derived from type `STRING`. If this data type is imported, the existing data type is overwritten and the type of all variables based on it is adjusted. I.e. the variables are now no longer `INT` variables, but `STRING` variables.

7.4.2 DBF Import/Export

Data can be exported to and imported from dBase.

IMPORT DBF FILE

To start the import:

1. right-click on the variable list
2. in the drop-down menu of **Extended export/import...** select the **Import dBase** command
3. follow the import assistant

The format of the file is described in the chapter File structure.



Info

Note:

- ▶ Driver object type and data type must be amended to the target driver in the DBF file in order for variables to be imported.
- ▶ dBase does not support structures or arrays (complex variables) at import.

EXPORT DBF FILE

To start the export:

1. right-click on the variable list
2. in the drop-down menu of **Extended export/import...** select the **Export dBase** command
3. follow the export assistant



Attention

DBF files:

- ▶ must correspond to the 8.3 DOS format for filenames (8 alphanumeric characters for name, 3 character suffix, no spaces)
- ▶ must not have dots (.) in the path name.
e.g. the path C:\users\John.Smith\test.dbf is invalid.
Valid: C:\users\JohnSmith\test.dbf
- ▶ must be stored close to the root directory in order to fulfill the limit for file name length including path: maximum 255 characters

The format of the file is described in the chapter File structure.



Info

dBase does not support structures or arrays (complex variables) at export.

File structure of the dBase export file

The dBaseIV file must have the following structure and contents for variable import and export:

Attention

dBase does not support structures or arrays (complex variables) when exporting.

DBF files must:

- ▶ correspond to the 8.3 DOS format for filenames (8 alphanumeric characters for name, 3 character suffix, no spaces)
- ▶ Be stored close to the root directory (Root)

DESIGN

Description	Type	Field size	Comment
KANALNAME	Char	128	Variable name. The length can be limited using the MAX_LAENGE entry in project.ini .
KANAL_R	C	128	The original name of a variable that is to be replaced by the new name entered under "KANALNAME" (field/column must be entered manually). The length can be limited using the MAX_LAENGE entry in project.ini .
KANAL_D	Log	1	The variable is deleted with the 1 entry (field/column has to be created by hand).
TAGNR	C	128	Identification. The length can be limited using the MAX_LAENGE entry in project.ini .
EINHEIT	C	11	Technical unit
DATENART	C	3	Data type (e.g. bit, byte, word, ...) corresponds to the data type.
KANALTYP	C	3	Memory area in the PLC (e.g. marker area, data area, ...) corresponds to the driver object type.
HWKANAL	Num	3	Bus address
BAUSTEIN	N	3	Datablock address (only for variables from the data area of the PLC)
ADRESSE	N	5	Offset

BITADR	N	2	For bit variables: bit address For byte variables: 0=lower, 8=higher byte For string variables: Length of string (max. 63 characters)
ARRAYSIZE	N	16	Number of variables in the array for index variables ATTENTION: Only the first variable is fully available. All others are only available for VBA or the Recipe Group Manager
LES_SCHR	R	1	Write-Read-Authorization 0: Not allowed to set value. 1: Allowed to set value.
MIT_ZEIT	R	1	time stamp in zenon (only if supported by the driver)
OBJEKT	N	2	Driver-specific ID number of the primitive object comprises KANALTYP and DATENART
SIGMIN	Float	16	Non-linearized signal - minimum (signal resolution)
SIGMAX	F	16	Non-linearized signal - maximum (signal resolution)
ANZMIN	F	16	Technical value - minimum (measuring range)
ANZMAX	F	16	Technical value - maximum (measuring range)
ANZKOMMA	N	1	Number of decimal places for the display of the values (measuring range)
UPDATERATE	F	19	Update rate for mathematics variables (in sec, one decimal possible) not used for all other variables
MENTIEFE	N	7	Only for compatibility reasons
HDRATE	F	19	HD update rate for historical values (in sec, one decimal possible)
HDTIEFE	N	7	HD entry depth for historical values (number)
NACHSORT	R	1	HD data as postsorted values
DRRATE	F	19	Updating to the output (for zenon DDE server, in [s], one decimal possible)
HYST_PLUS	F	16	Positive hysteresis, from measuring range
HYST_MINUS	F	16	Negative hysteresis, from measuring range
PRIOR	N	16	Priority of the variable
REAMATRIZE	C	32	Allocated reaction matrix

ERSATZWERT	F	16	Substitute value, from measuring range
SOLLMIN	F	16	Minimum for set value actions, from measuring range
SOLLMAX	F	16	Maximum for set value actions, from measuring range
VOMSTANDBY	R	1	Get value from standby server; the value of the variable is not requested from the server but from the standby-server in redundant networks
RESOURCE	C	128	Resource label. Free string for export and display in lists. The length can be limited using the MAX_LAENGE entry in project.ini .
ADJWVBA	R	1	Non-linear value adaption: 0: Non-linear value adaption is used 1: non linear value adaption is not used
ADJZENON	C	128	Linked VBA macro for reading the variable value for non-linear value adjustment.
ADJWVBA	C	128	Linked VBA macro for writing the variable value for non-linear value adjustment.
ZWREMA	N	16	Linked counter REMA.
MAXGRAD	N	16	Gradient overflow for counter REMA.

**Attention.**

When importing, the driver object type and data type must be amended to the target driver in the DBF file in order for variables to be imported.

LIMIT DEFINITION

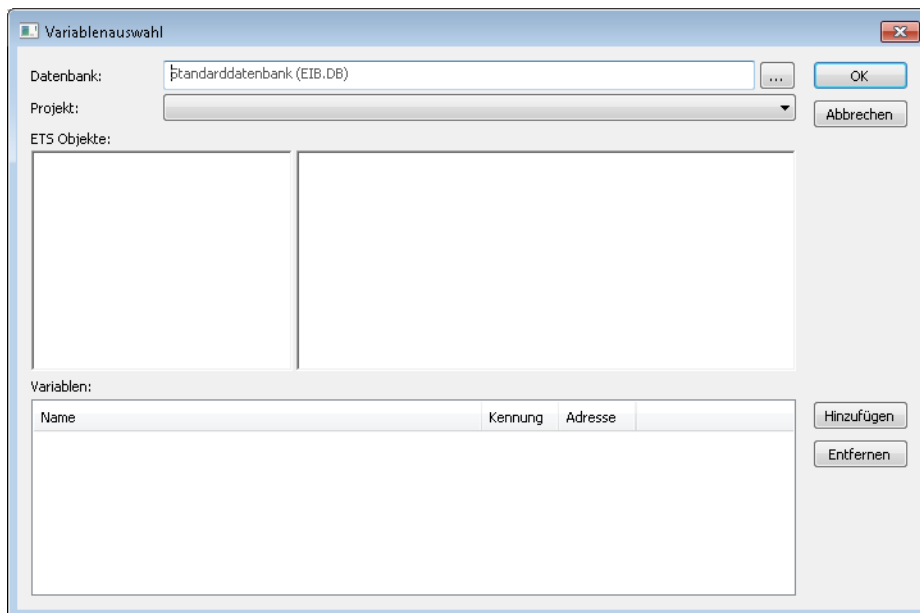
Limit definition for limit values 1 to 4, and status 1 to 4:

Description	Type	Field size	Comment
AKTIV1	R	1	Limit value active (per limit value available)
GRENZWERT1	F	20	Technical value or ID number of a linked variable for a dynamic limit (see VARIABLEx) (if VARIABLEx is 1 and here it is -1, the existing variable linkage is not overwritten)
SCHWWERT1	F	16	Threshold value for limit
HYSTERESE1	F	14	Hysteresis in %
BLINKEN1	R	1	Set blink attribute
BTB1	R	1	Logging in CEL
ALARM1	R	1	Alarm
DRUCKEN1	R	1	Printer output (for CEL or Alarm)
QUITTIER1	R	1	Must be acknowledged
LOESCHE1	R	1	Must be deleted
VARIABLE1	R	1	Dyn. limit value linking the limit is defined by an absolute value (see field GRENZWERTx).
FUNC1	R	1	Function linking
ASK_FUNC1	R	1	With interrogation before execution
FUNC_NR1	N	10	ID number of the linked function (if "-1" is entered here, the existing function is not overwritten during import)
A_GRUPPE1	N	10	Alarm/event group
A_KLASSE1	N	10	Alarm/event class
MIN_MAX1	C	3	Minimum, Maximum
FARBE1	N	10	Color as Windows coding
GRENZTXT1	C	66	Limit value text
A_DELAY1	N	10	Time delay
INVISIBLE1	R	1	Invisible

Expressions in the column "Comment" refer to the expressions used in the dialog boxes for the definition of variables. For more information, see chapter Variable definition.

7.4.3 Online import

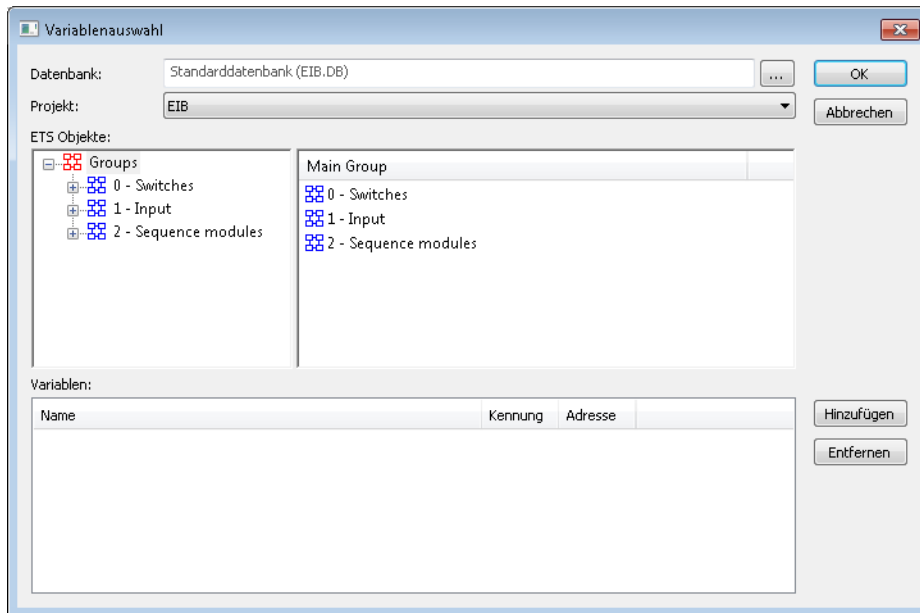
EiB driver variables can be imported directly from the PLC in zenon. For online import, the file **EiBv2_DB.d11** must be present in the zenon folder.



For the online import:

1. select command **Import variables from driver** from the context menu of the driver
2. The dialog for variable selection is opened
3. select the desired variables
4. Accept the variable address
5. Close the dialog by clicking on **OK**

VARIABLE SELECTION



Parameters	Description
Database	<p>Selection of EIB database.</p> <p>Standard: EIB.DB in the ETS installation folder.</p> <p>Additional databases can be created from ETS3. To select an alternative database, enter the name, including path, into the dialog field or select the database by clicking on the ... button.</p> <p>The EIB.DB database is automatically used if the field is empty.</p> <p>Attention: The etesvr32.dll file must be version 1.4.7.1 or higher. Older versions are not supported and lead to an error when being read into the database.</p>
Project	<p>Selection of a project from the database or drop-down list.</p> <p>Objects of the project are read in (ETS objects) and displayed in the list field. Reading in can - depending on the project size size - last several minutes.</p>
ETS objects	<p>The objects are displayed hierarchically in the tree.</p> <p>Objects of the respective hierarchy level are displayed in the Groups list field.</p> <p>If a subgroup is selected in the tree, the communication objects linked to this group are displayed in the Groups list field. This display is for information purposes only.</p> <p>Groups are added to the import list by clicking on the Add button. For this, the following applies:</p> <ul style="list-style-type: none"> ▶ Objects from the list field (main group, middle group, sub group) have priority over the (ETS Objects) selected in the tree. If groups are selected in the list, these are transferred into the selection; if not, the groups selected in the tree are transferred. ▶ If main or middle groups are selected in the tree, all the subgroups contained therein are accepted into the selection. ▶ Subgroups can be added by double clicking
Groups	<p>Groups for selection are available depending on the selection in the ETS objects area:</p> <ul style="list-style-type: none"> ▶ Main Group ▶ Middle Group ▶ Sub Group

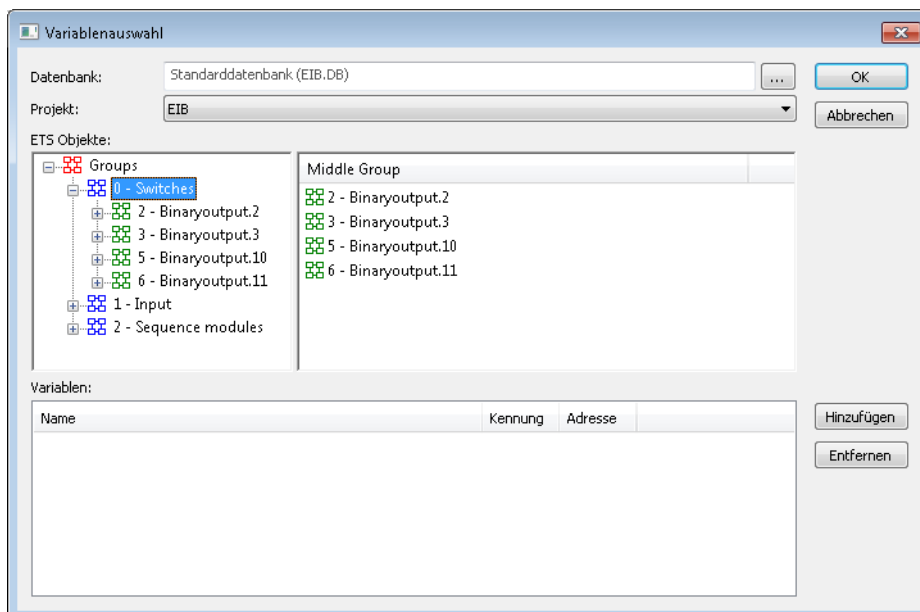
	► Object
Variables	List of variables to be imported.
Add	Add selected variables from ETS objects or the Groups to the list.
Remove	Remove highlighted variables from the import list. Multiple selection is possible.
OK	Confirms configuration of the online import, closes dialog and starts variable import.
Cancel	Discards selection and closes dialog. No variables are imported.

EXAMPLE

- Selection from the **EIB** database provides three groups:

- Switches
- Input
- Sequence modules

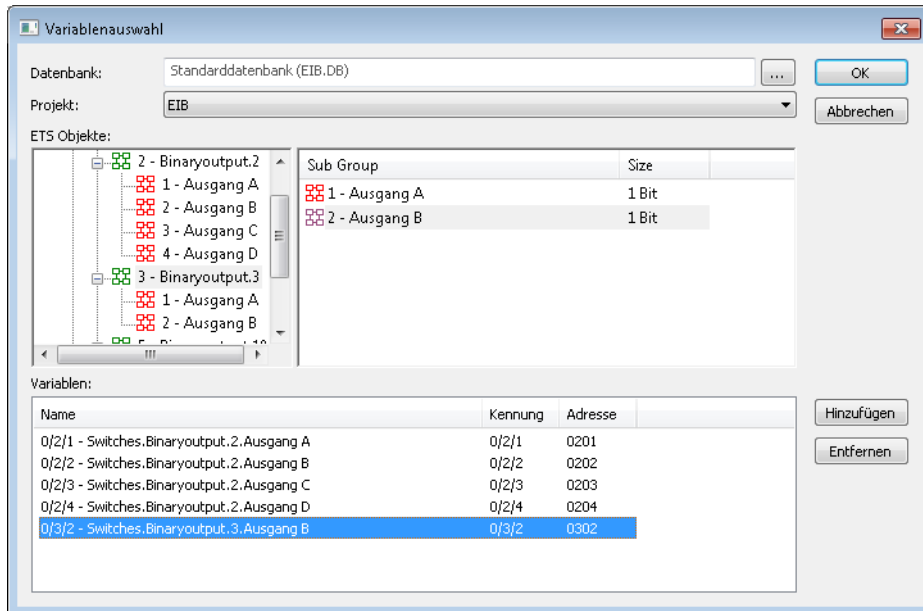
- Selection of Switches opens **Middle Group**



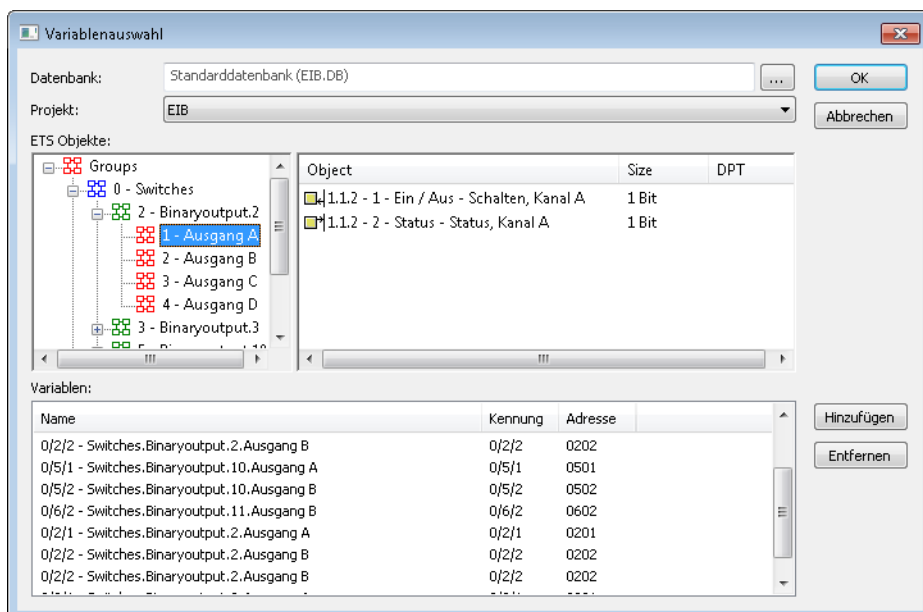
- Selection of `Binaryoutput.2` from the **Middle Group** opens **Subgroup**

- 1 - Output A
- 2 - Output A

- 3 - Output C
- 4 - Output D



4. Selection of **Sub Group 1 - Output A** opens the list of the objects



7.5 Driver variables

The driver kit implements a number of driver variables. These are divided into:

- ▶ Information
- ▶ Configuration
- ▶ Statistics and
- ▶ Error messages

The definitions of the variables defined in the driver kit are available in the import file `drvvar.dbf` (on the CD in the directory: `CD_Drive:/Predefined/Variables`) and can be imported from there.

Hint: Variable names must be unique in zenon. If driver variables are to be imported from `drvvar.dbf` again, the variables that were imported beforehand must be renamed.



Info

Not every driver supports all driver variants.

For example:

- ▶ Variables for modem information are only supported by modem-compatible drivers
- ▶ Driver variables for the polling cycle only for pure polling drivers
- ▶ Connection-related information such as ErrorMSG only for drivers that only edit one connection at a time

INFORMATION

Name from import	Type	Offset	Description
MainVersion	UINT	0	Main version number of the driver.
SubVersion	UINT	1	Sub version number of the driver.
BuildVersion	UINT	29	Build version number of the driver.
RTMajor	UINT	49	zenon main version number
RTMinor	UINT	50	zenon sub version number
RTSp	UINT	51	zenon service pack number
RTBuild	UINT	52	zenon build number
LineStateIdle	BOOL	24.0	TRUE, if the modem connection is idle
LineStateOffering	BOOL	24.1	TRUE, if a call is received
LineStateAccepted	BOOL	24.2	The call is accepted
LineStateDialtone	BOOL	24.3	Dialtone recognized
LineStateDialing	BOOL	24.4	Dialing active
LineStateRingBack	BOOL	24.5	While establishing the connection
LineStateBusy	BOOL	24.6	Target station is busy
LineStateSpecialInfo	BOOL	24.7	Special status information received
LineStateConnected	BOOL	24.8	Connection established
LineStateProceeding	BOOL	24.9	Dialing completed
LineStateOnHold	BOOL	24.10	Connection in hold
LineStateConferenced	BOOL	24.11	Connection in conference mode.
LineStateOnHoldPendConf	BOOL	24.12	Connection in hold for conference
LineStateOnHoldPendTransfer	BOOL	24.13	Connection in hold for transfer
LineStateDisconnected	BOOL	24.14	Connection stopped
LineStateUnknow	BOOL	24.15	Connection status unknown
ModemStatus	UDINT	24	Current modem status
TreiberStop	BOOL	28	Driver stopped

			For <code>driver stop</code> , the variable has the value <code>TRUE</code> and an OFF bit. After the driver has started, the variable has the value <code>FALSE</code> and no OFF bit.
<code>SimulRTState</code>	<code>UDINT</code>	60	Informs the status of Runtime for driver simulation.

CONFIGURATION

Name from import	Type	Offset	Description
<code>ReconnectInRead</code>	<code>BOOL</code>	27	If <code>TRUE</code> , the modem is automatically reconnected for reading
<code>ApplyCom</code>	<code>BOOL</code>	36	Apply changes in the settings of the serial interface. Writing to this variable immediately results in the method <code>SrvDrvVarApplyCom</code> being called (which currently has no further function).
<code>ApplyModem</code>	<code>BOOL</code>	37	Apply changes in the settings of the modem. Writing this variable immediately calls the method <code>SrvDrvVarApplyModem</code> . This closes the current connection and opens a new one according to the settings PhoneNumberSet and ModemHwAdrSet .
<code>PhoneNumberSet</code>	<code>STRING</code>	38	Telephone number, that should be used
<code>ModemHwAdrSet</code>	<code>DINT</code>	39	Hardware address for the telephone number
<code>GlobalUpdate</code>	<code>UDINT</code>	3	Update time in milliseconds (ms).
<code>BGlobalUpdaten</code>	<code>BOOL</code>	4	<code>TRUE</code> , if update time is global
<code>TreiberSimul</code>	<code>BOOL</code>	5	<code>TRUE</code> , if driver in sin simulation mode
<code>TreiberProzab</code>	<code>BOOL</code>	6	<code>TRUE</code> , if the variables update list should be kept in the memory
<code>ModemActive</code>	<code>BOOL</code>	7	<code>TRUE</code> , if the modem is active for the driver

Device	STRING	8	Name of the serial interface or name of the modem
ComPort	UINT	9	Number of the serial interface.
Baud rate	UDINT	10	Baud rate of the serial interface.
Parity	SINT	11	Parity of the serial interface
ByteSize	SINT	14	Number of bits per character of the serial interface Value = 0 if the driver cannot establish any serial connection.
StopBit	SINT	13	Number of stop bits of the serial interface.
Autoconnect	BOOL	16	TRUE, if the modem connection should be established automatically for reading/writing
PhoneNumber	STRING	17	Current telephone number
ModemHwAdr	DINT	21	Hardware address of current telephone number
RxIdleTime	UINT	18	Modem is disconnected, if no data transfer occurs for this time in seconds (s)
WriteTimeout	UDINT	19	Maximum write duration for a modem connection in milliseconds (ms).
RingCountSet	UDINT	20	Number of ringing tones before a call is accepted
ReCallIdleTime	UINT	53	Waiting time between calls in seconds (s).
ConnectTimeout	UDINT	54	Time in seconds (s) to establish a connection.

STATISTICS

Name from import	Type	Offset	Description
MaxWriteTime	UDINT	31	The longest time in milliseconds (ms) that is required for writing.
MinWriteTime	UDINT	32	The shortest time in milliseconds (ms) that is required for writing.
MaxBlkReadTime	UDINT	40	Longest time in milliseconds (ms) that is required to read a data block.
MinBlkReadTime	UDINT	41	Shortest time in milliseconds (ms) that is required to read a data block.
WriteErrorCount	UDINT	33	Number of writing errors
ReadSucceedCount	UDINT	35	Number of successful reading attempts
MaxCycleTime	UDINT	22	Longest time in milliseconds (ms) required to read all requested data.
MinCycleTime	UDINT	23	Shortest time in milliseconds (ms) required to read all requested data.
WriteCount	UDINT	26	Number of writing attempts
ReadErrorCount	UDINT	34	Number of reading errors
MaxUpdateTimeNormal	UDINT	56	Time since the last update of the priority group Normal in milliseconds (ms).
MaxUpdateTimeHigher	UDINT	57	Time since the last update of the priority group Higher in milliseconds (ms).
MaxUpdateTimeHigh	UDINT	58	Time since the last update of the priority group High in milliseconds (ms).
MaxUpdateTimeHighest	UDINT	59	Time since the last update of the priority group Highest in milliseconds (ms).

PokeFinish	BOOL	55	Goes to 1 for a query, if all current pokes were executed
------------	------	----	---

ERROR MESSAGES

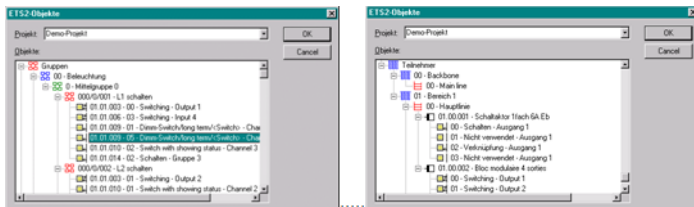
Name from import	Type	Offset	Description
ErrorTimeDW	UDINT	2	Time (in seconds since 1.1.1970), when the last error occurred.
ErrorTimeS	STRING	2	Time (in seconds since 1.1.1970), when the last error occurred.
RdErrPrimObj	UDINT	42	Number of the PrimObject, when the last reading error occurred.
RdErrStationsName	STRING	43	Name of the station, when the last reading error occurred.
RdErrBlockCount	UINT	44	Number of blocks to read when the last reading error occurred.
RdErrHwAdresse	UDINT	45	Hardware address when the last reading error occurred.
RdErrDatablockNo	UDINT	46	Block number when the last reading error occurred.
RdErrMarkerNo	UDINT	47	Marker number when the last reading error occurred.
RdErrSize	UDINT	48	Block size when the last reading error occurred.
DrvError	SINT	25	Error message as number
DrvErrorMsg	STRING	30	Error message as text
ErrorFile	STRING	15	Name of error log file

8. Driver-specific functions

This driver supports the following functions:

ACCEPTANCE OF VARIABLES FROM ETS DATABASE

With the button “Database” the variable definitions can be accepted from the ETS 2.0 database. Only group addresses can be accepted.



GROUP ADDRESSES

For Group addressing a main, middle, and sub group has to be defined. When accepting from the database the objects linked to the according group are displayed for information purposes.

CYCLIC READING OF GROUPS

The EIB driver works spontaneously, this means it gets the values in the beginning and then it waits for a message from the hardware (e.g. Falcon) that indicates the change of a value. If a device on the bus fails, it usually remains unnoticed, but there are no new values coming in.

If there are important devices on the bus (e.g. fire alarms), such a situation is fatal. This is why the variables of such devices can be set to “cyclic reading” (in the address properties), so that they are regularly read out. This makes sure that a failure is detected immediately.

Attention

This option should be selected with care, as it increases the bus load enormously.

INI ENTRIES

PROJECT.INI ENTRIES

Whether a dialog window should be displayed or not can be set in the project.ini. In the dialog window all read and write requests with their according answers and all errors are displayed. With the button “Save” the content of the dialog window can be saved into the project folder (file “Diagnose.txt”).

[EIBV2_32]

DIAGNOSE=1

LIMITATIONS

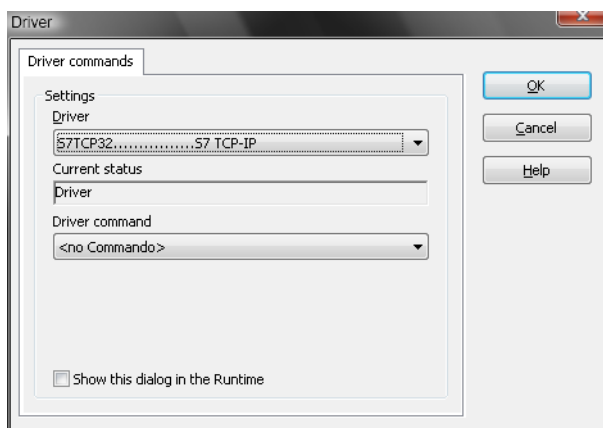
Only groups defined as Reading (attribute L) in the ETS3 software can be read. In zenon groups that are write-only are generally set to INVALID until a value is written because only then the driver knows the status of the data points.

9. Driver commands

This chapter describes standard functions that are valid for most zenon drivers. Not all functions described here are available for every driver. For example, a driver that does not, according to the data sheet, support a modem connection also does not have any modem functions.

Driver commands are used to influence drivers using zenon; start and stop for example. The engineering is implemented with the help of function **Driver commands**. To do this:

- ▶ create a new function
- ▶ select *Variables -> Driver commands*
- ▶ The dialog for configuration is opened



Parameters	Description
Drivers	Drop-down list with all drivers which are loaded in the project.
Current state	Fixed entry which has no function in the current version.
Driver commands	Drop-down list for the selection of the command.
▶ Start driver (online mode)	Driver is reinitialized and started.
▶ Stop driver (offline mode)	Driver is stopped. No new data is accepted. Note: If the driver is in offline mode, all variables that were created for this driver receive the status switched off (OFF; Bit 20).
▶ Driver in simulation mode	Driver is set into simulation mode. The values of all variables of the driver are simulated by the driver. No values from the connected hardware (e.g. PLC, bus system, ...) are displayed.
▶ Driver in hardware mode	Driver is set into hardware mode. For the variables of the driver the values from the connected hardware (e.g. PLC, bus system, ...) are displayed.
▶ Driver-specific command	Enter driver-specific commands. Opens input field in order to enter a command.
▶ Activate driver write set value	Write set value to a driver is allowed.
▶ Deactivate driver write set value	Write set value to a driver is prohibited.
▶ Establish connection with modem	Establish connection (for modem drivers) Opens the input fields for the hardware address and for the telephone number.
▶ Disconnect from modem	Terminate connection (for modem drivers)
Show this dialog in the Runtime	The dialog is shown in Runtime so that changes can be made.

DRIVER COMMANDS IN THE NETWORK

If the computer, on which the **driver command** function is executed, is part of the zenon network, additional actions are carried out. A special network command is sent from the computer to the project

server, which then executes the desired action on its driver. In addition, the Server sends the same driver command to the project standby. The standby also carries out the action on its driver.

This makes sure that Server and Standby are synchronized. This only works if the Server and the Standby both have a working and independent connection to the hardware.

10. Error analysis

Should there be communication problems, this chapter will assist you in finding out the error.

10.1 Possible error sources

Cable disconnected

Interface program Falcon not installed



Info

Along with the interface program Falcon a test program PeiTestWizard is installed. This program can check the connection to the EIB hardware.

10.2 Analysis tool

All zenon modules such as Editor, Runtime, drivers, etc. write messages to a joint log file. To display them correctly and clearly, use the Diagnosis Viewer (main.chm::/12464.htm) program that was also installed with zenon. You can find it under *Start/All programs/zenon/Tools 7.00 -> Diagviewer*.

zenon driver log all errors in the log files. The default folder for the log files is subfolder `LOG` in directory `ProgramData`, example: `C:\ProgramData\zenon \zenon700\LOG` for zenon version 7.00 SPO. Log files are text files with a special structure.

Attention: With the default settings, a driver only logs error information. With the **Diagnosis Viewer** you can enhance the diagnosis level for most of the drivers to "Debug" and "Deep Debug". With this the driver also logs all other important tasks and events.

In the Diagnosis Viewer you can also:

- ▶ follow currently created entries live
- ▶ customize the logging settings
- ▶ change the folder in which the log files are saved

Hints:

1. In Windows CE even errors are not logged per default due to performance reasons.
2. The Diagnosis Viewer displays all entries in UTC (coordinated world time) and not in local time.
3. The Diagnosis Viewer does not display all columns of a log file per default. To display more columns activate property **Add all columns with entry** in the context menu of the column header.
4. If you only use **Error logging**, the problem description is in column **Error text**. For other diagnosis level the description is in column **General text**.
5. For communication problems many drivers also log error numbers which the PLC assigns to them. They are displayed in **Error text** and/or **Error code** and/or **Driver error parameter (1 and 2)**. Hints on the meaning of error codes can be found in the driver documentation and the protocol/PLC description.
6. At the end of your test set back the diagnosis level from **Debug** or **Deep Debug**. At **Debug** and **Deep Debug** there are a great deal of data for logging which are saved to the hard drive and which can influence your system performance. They are still logged even after you close the **Diagnosis Viewer**.



Info

You can find further information on the Diagnosis Viewer in the Diagnose Viewer (main.chm::/12464.htm) chapter.

10.3 Check list

Is the device (PLC) that you are trying to communicate with connected to the power supply?

Is the cable between PLC and PC/IPC connected correctly?

Have you analyzed the error text file (which errors did occur)?

Send the zenon project to support@copadata.com (<mailto:support@copadata.com>)