

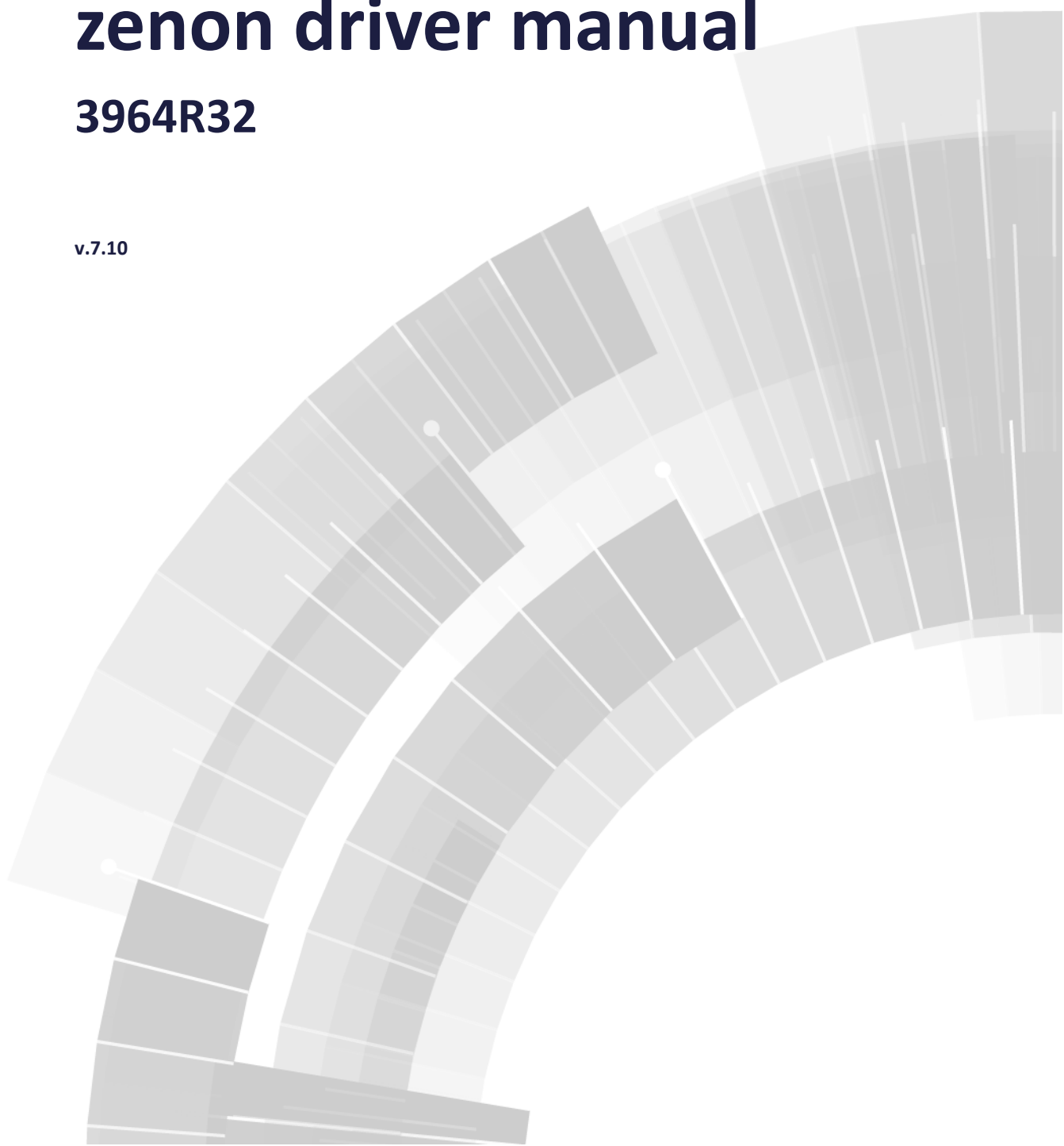


COPADATA
do it your way

zenon driver manual

3964R32

v.7.10





© 2013 Ing. Punzenberger COPA-DATA GmbH

All rights reserved.

Distribution and/or reproduction of this document or parts thereof in any form are permitted solely with the written permission of the company COPA-DATA. The technical data contained herein has been provided solely for informational purposes and is not legally binding. Subject to change, technical or otherwise.

Contents

1. Welcome to COPA-DATA help	4
2. 3964R32	4
2.1 3964R32 - Data sheet.....	5
2.2 Driver history	6
2.3 Requirements.....	7
2.3.1 PC.....	7
2.3.2 Control.....	7
2.4 Configuration	7
2.4.1 Creating a driver	8
2.4.2 Settings in the driver dialog.....	10
2.5 Creating variables.....	16
2.5.1 Creating variables in the Editor	16
2.5.2 Addressing	19
2.5.3 Driver objects and datatypes	19
2.5.4 Creating variables by importing	21
2.5.5 Treibervariablen	29
2.6 Driver-specific functions	34
2.7 Driver commands.....	36
2.8 Error analysis.....	38
2.8.1 Analysis tool	38
2.8.2 Error numbers	39
2.8.3 Check list.....	40

1. Welcome to COPA-DATA help

GENERAL HELP

If you cannot find any information you require in this help chapter or can think of anything that you would like added, please send an email to documentation@copadata.com (<mailto:documentation@copadata.com>).

PROJECT SUPPORT

You can receive support for any real project you may have from our Support Team, who you can contact via email at support@copadata.com (<mailto:support@copadata.com>).

LICENSES AND MODULES

If you find that you need other modules or licenses, our staff will be happy to help you. Email sales@copadata.com (<mailto:sales@copadata.com>).

2. 3964R32

Direct connection with Simatic S5/S7 PLCs via an additional serial card in the PLC with configurable data transmission rate.

A continuous connection between PLC and programming device during Runtime is possible.

2.1 3964R32 - Data sheet

General:	
Driver file name	3964R32.exe
Driver name	3964R-RK512
PLC types	All PLCs supporting 3963R/RK512; e.g. Siemens S5/S7 with according CP or CPU; Schleicher P03 via RK512. With Helmholz Adapter communication with all PLCs with MPI support possible.
PLC manufacturer	Helmholz; MPI; Siemens; Sauter; Schleicher;

Driver supports:	
Protocol	3964R/RK512;
Addressing: Address-based	x
Addressing: Name-based	-
Spontaneous communication	-
Polling communication	x
Online browsing	-
Offline browsing	x
Real-time capable	-
Blockwrite	x
Modem capable	x
Serial logging	x
RDA numerical	x
RDA String	-

Prerequisites:	
Hardware PC	RS 232 serial interface; for MPI connection: Helmholz 3964R->MPI Adapter
Software PC	-
Hardware PLC	Examples: S5-115 with CPU 944 or 945; S7-300 PtP types or with CP 340 or CP 341; S7-400 with CP 440 or CP 441
Software PLC	PLC dependent
Requires v-dll	x

Platforms:	
Operating systems	Windows CE 5.0, CE 6.0; Windows Vista, 7, 8, Server 2008/R2, Server 2012;
CE platforms	x86; ARM;

2.2 Driver history

Date	Driver version	Comment
01.01.2001		created
10.12.2003		Inserted new datatype WString; corrected errors
22.03.2004		Changed configuration dialog; Helmholz adapter settings can be entered.
14.08.2008	2400	Driver documentation created

2.3 Requirements

This chapter contains information on the requirements that are necessary for use of this driver.

2.3.1 PC

In order to establish a serial connection to the PLC, a serial COM port is required at the PC. The port must not be used and therefore blocked by other software (e.g. modem drivers, PLC software, ...) during Runtime.

2.3.2 Control

HARDWARE

S5: z. B. S5-115 mit CPU 944 oder 945;

S7: S7-300 PtP types or CP 340 or CP 341; S7-400 with CP 440 or CP 44

SOFTWARE

Synchronous, SendAll, ReceiveAll blocks

Optionally, you can use the MPI/3964r adapter by Helmholz:

Consider the version of the Helmholz firmware. Attention: it must be at least version 1.13 or higher.

2.4 Configuration

In this chapter you will learn how to use the driver in a project and which settings you can change.

**Info**

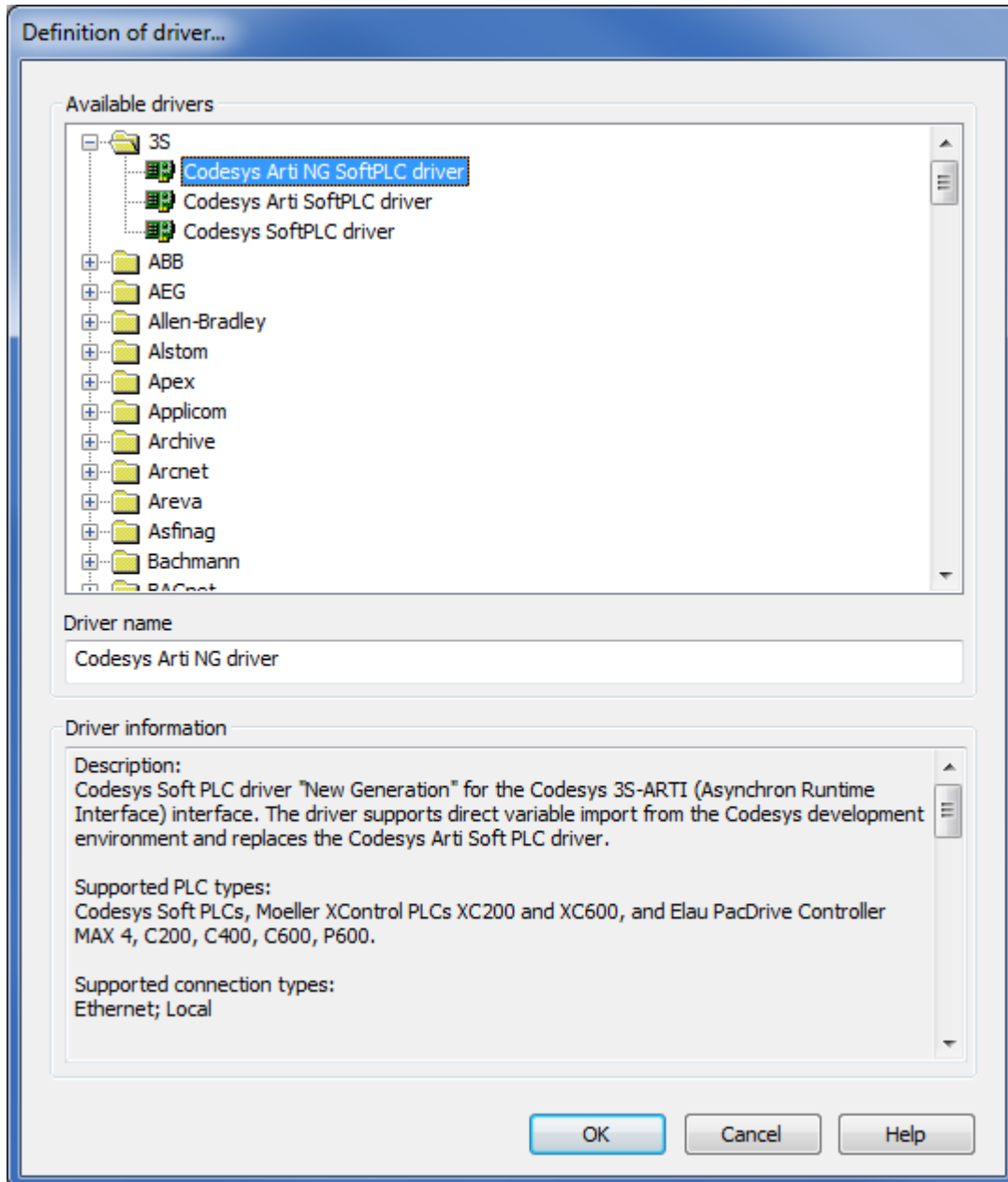
Find out more about further settings for zenon variables in the chapter Variables (main.chm::/15247.htm) of the online manual.

2.4.1 Creating a driver

In order to create a new driver:

1. Right-click on **Driver** in the Project Manage and select **Driver new** in the context menu.


2. In the following dialog the control system offers a list of all available drivers.



3. Select the desired driver and give it a name:
- The driver name has to be unique, i.e. if one and the same driver is to be used several times in one project, a new name has to be given each time.
 - The driver name is part of the file name. Therefore it may only contain characters which are supported by the operating system. Invalid characters are replaced by an underscore (_).

- **Attention:** This name cannot be changed later on.
4. Confirm the dialog with **OK**. In the following dialog the single configurations of the drivers are defined.

Only the respective required drivers need to be loaded for a project. Later loading of an additional driver is possible without problems.

 **Info**

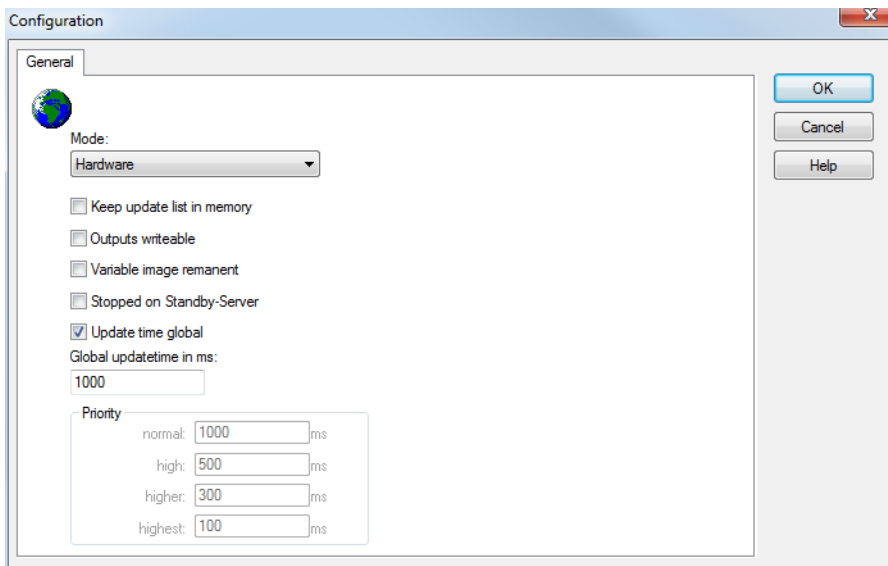
For new projects and for existing projects which are converted to version 6.21 or higher, the following drivers are created automatically:

- ▶ Internal
- ▶ MathDr32
- ▶ SysDrv.

2.4.2 Settings in the driver dialog

You can change the following settings of the driver:

General



Parameter	Description
Mode	<p>Allows to switch between hardware mode and simulation mode</p> <ul style="list-style-type: none"> ▶ Hardware: A connection to the control is established. ▶ Simulation static No communication between to the control is established, the values are simulated by the driver. In this modus the values remain constant or the variables keep the values which were set by zenon Logic. Each variable has its own memory area. E.g. two variables of the type marker with offset 79 can have different values in the Runtime and do not influence each other. Exception: The simulator driver. ▶ Simulation - counting No communication between to the control is established, the values are simulated by the driver. In this modus the driver increments the values within a value range automatically. ▶ Simulation - programmed N communication is established to the PLC. The values are calculated by a freely programmable simulation project. The simulation project is created with the help of the zenon Logic Workbench and runs in a zenon Logic Runtime which is integrated in the driver. For details see chapter Driver simulation (main.chm::/25206.htm).
Keep update list in the memory	<p>Variables which were requested once are still requested from the control even if they are currently not needed.</p> <p>This has the advantage that e.g. multiple screen switches after the screen was opened for the first time are executed faster because the variables need not be requested again. The disadvantage is a higher load for the communication to the control.</p>
Output can be written	<p>Aktiv: Outputs can be written.</p> <p>Inactive: Writing of outputs is prevented.</p> <p>Note: Not available for every driver.</p>

Variable image remanent	<p>This option saves and restores the current value, time stamp and the states of a data point.</p> <p>Fundamental requirement: The variable must have a valid value and time stamp.</p> <p>The variable image is saved in mode hardware if:</p> <ul style="list-style-type: none"> ▶ one of the states <code>S_MERKER_1(0)</code> up to <code>S_MERKER8(7)</code>, <code>REVISION(9)</code>, <code>AUS(20)</code> or <code>ERSATZWERT(27)</code> is active <p>The variable image is always saved if:</p> <ul style="list-style-type: none"> ▶ the variable is of the object type <code>Driver variable</code> ▶ the driver runs in simulation mode. (not programmed simulation) <p>The following states are not restored at the start of the Runtime:</p> <ul style="list-style-type: none"> ▶ <code>SELECT(8)</code> ▶ <code>WR-ACK(40)</code> ▶ <code>WR-SUC(41)</code> <p>The mode Simulation - programmed at the driver start is not a criterion in order to restore the remanent variable image.</p>
Stop at the Standby Server	<p>Setting for redundancy at drivers which allow only on communication connection. For this the driver is stopped at the Standby Server and only started at the upgrade.</p> <p>Attention: If this option is active, the gapless archiving is no longer guaranteed.</p> <p>Aktiv: Sets the driver at the not-process-leading Server automatically in a stop-like state. In contrast to stopping via driver command, the variable does not receive status switched off (<code>statusverarbeitung.chm: :/24150.htm</code>) but an empty value. This prevents that at the upgrade to the Server irrelevant values are created in the AML, CEL and Historian.</p>
Global Update time	<p>Aktiv: The set <code>Global update time</code> in ms is used for all variables in the project. The priority set at the variables is not used.</p> <p>Inactive: The set priorities are used for the individual variables.</p>
Priority	<p>Here you set the polling times for the individual priorities. All variables with the according priority are polled in the set time. The allocation is taken</p>

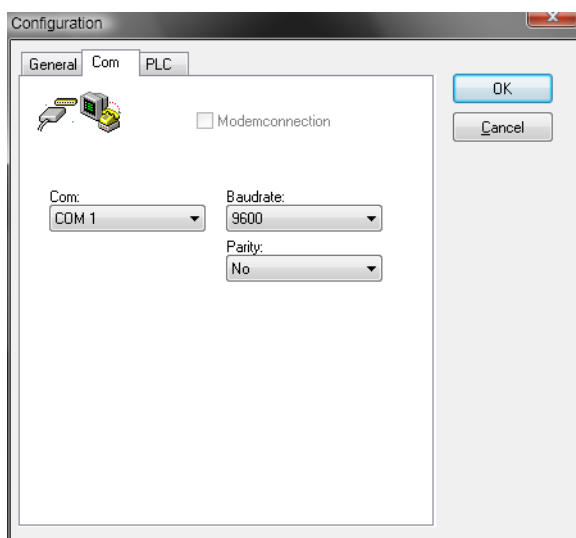
	place for each variable separately in the settings of the variable properties. The communication of the individual variables are graduated in respect of importance or necessary topicality using the priorities. Thus the communication load is distributed better.
OK	Accepts settings in all tabs and closes dialog.
Cancel	Discards all changes and closes the dialog.
Help	Opens online help.

UPDATE TIME FOR CYCLICAL DRIVER

The following applies for cyclical drivers:

For **Set value**, **Advising** of variables and **Requests**, a read cycle is immediately triggered for all drivers - regardless of the set update time. This ensures that the value is immediately available for visualization after writing. Update times can therefore be shorter than pre-set for cyclical drivers.

Driver dialog Com



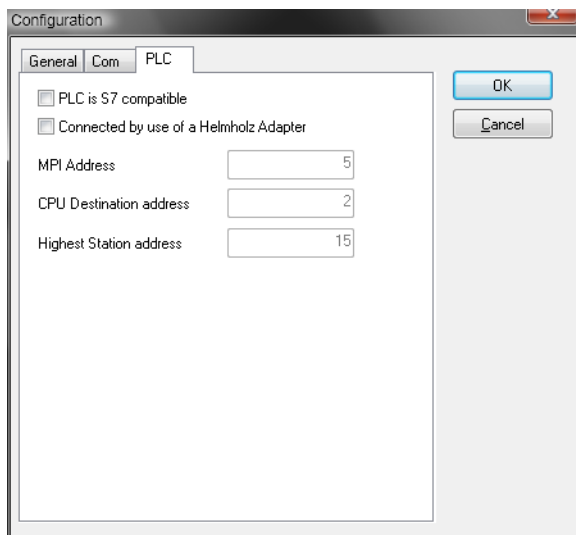
Parameters	Description
Modem connection	Shows the fields for the modem settings (see below).
Com	Select serial interface: COM1 – COM16
Baud rate	Data transfer rate 110; 300; 1200; 2400; 4800; 9600; 19200; 38400; 57600; 115200
Modem	Select the desired TAPI modem here.
Telephone number	The telephone number for the connection.
HW address	The hardware address for the telephone number. Only variables for the defined hardware address are polled. If -1 is entered here, all addresses are polled.
Inactive (s)	The connection is closed, if there is no valid data exchange within this time [s]. Default: 30s
Time to connect	Within this time [s] a connection has to be established, otherwise the connection establishment is stopped with an error. In version 5.2 this setting was defined with 30s. Default: 30s From version 5.21
Time between calls	The modem waits this time [s] between two calls. Mail-certificated modems cannot make calls immediately one after the other. Default: 60 s From version 5.21
Automatic connection	If this setting is activated an a telephone number is defined, the connection establishment is started immediately on starting the Runtime.

DEFAULT CONFIGURATION

Baud rate	9600, 19200
Data bit	8 (assigned by protocol)
Stop bit	1 (assigned by protocol)
Parity	even (assigned by protocol)
Protocol	None (assigned by protocol)

Driver dialog PLC

S5/S7



PLC is S7 compatible

Please select, if an S7 PLC is used.

If an S7 PLC is used, extended datablocks are available instead of datablocks. This means, that datablocks with a number higher than 255 (up to 65536) can be used.

Attention: The Driver is word oriented (16 Bit). Only entire word variables are read/written. The S7 PLC is byte oriented (8Bit). Be sure that the addressed areas exist in the PLC as well.

Example: Example: A datablock is created until offset 17. The driver reads the offset 17 and 18. If the offset 18 is not present in the block, there is a communication error.

Helmholz Adapter	Please select, if a Helmholz adapter is used.
------------------	---

With this dialog it is possible to configure this Helholz adapter. On starting the project (Runtime) these settings are sent to the adapter.

MPI Address	Address of the SSW7-RK512 in the MPI Net
CPU Destination address	Address of the target CPU
Highest Station address	highest station address

2.5 Creating variables

This is how you can create variables in the zenon Editor:

2.5.1 Creating variables in the Editor

Variables can be created:

- ▶ as simple variables
- ▶ in arrays (main.chm::/15262.htm)
- ▶ as structure variables (main.chm::/15278.htm)

VARIABLE DIALOG

To create a new variable, regardless of which type:

-
- The screenshot shows the SIMATIC Manager Project Manager window. The left pane displays the project tree for 'Workspace 'C:\WSF6_PJ1''. The main pane shows a table with columns: Status, Name, Unit, Net address, Data block, Offset, Bit num., and Alignm... A context menu is open over the table, showing options like 'Variable new...', 'Create standard function', 'Linked elements', 'Copy', 'Paste', 'Delete', 'Expand/collapse node', 'Activate all', 'Activate', 'Deactivate', 'Export XML selected...', 'Import XML...', 'Extended import/export', 'Extended filter', 'Remove all filter', 'Edit selected cell', 'Replace text in selected column...', and 'Replace text in limits...'.

- 17

4. The settings that are possible depends on the type of variables



Property	Description
Name	<p>Distinct name of the variable. If a variable with the same name already exists in the project, no additional variable can be created with this name.</p> <p>Maximum length: 128 characters</p> <p>Attention: The # character is not permitted in variable names. If non-permitted characters are used, creation of variables cannot be completed and the Finish button remains inactive.</p>
Drivers	<p>Select the desired driver from the drop-down list.</p> <p>Note: If no driver has been opened in the project, the driver for internal variables (Intern.exe (Main.chm::/Intern.chm::/Intern.htm)) is automatically loaded.</p>
Driver object type (cti.chm::/28685.htm)	Select the appropriate driver object type from the drop-down list.

Data type	Select the desired data type. Click on the ... button to open the selection dialog.
Array settings	Expanded settings for array variables. You can find details in the Arrays chapter.
Addressing options	Expanded settings for arrays and structure variables. You can find details in the respective section.
Automatic element activation	Expanded settings for arrays and structure variables. You can find details in the respective section.

INHERITANCE FROM DATA TYPE

Measuring range, Signal range and Set value are always:

- ▶ derived from the datatype
- ▶ Automatically adapted if the data type is changed

Note for signal range: If a change is made to a data type that does not support the set `signal range`, the `signal range` is amended automatically. For example, for a change from **INT** to **SINT**, the `signal range` is changed to 127. The amendment is also carried out if the `signal range` was not inherited from the data type. In this case, the `measuring range` must be adapted manually.

2.5.2 Addressing

Byte-oriented addressing is used for markers

Word-oriented addressing is used for data blocks.

2.5.3 Driver objects and datatypes

Driver objects are areas available in the PLC, such as markers, data blocks etc. Here you can find out which driver objects are provided by the driver and which IEC data types can be assigned to the respective driver objects.

Driver objects

The following object types are available in this driver:

Driver object type	Channel type	Read / Write	Supported data types	Comment
Output	11	R	USINT, BOOL, SINT, UINT, INT	
Input	10	R	USINT, BOOL, SINT, UINT, INT	
Ext. data block	34	R / W	REAL, BOOL, WSTRING, DINT, UDINT, INT, UINT, STRING, USINT, SINT	
PLC marker	8	R / W	BOOL, UDINT, DINT, USINT, UINT, INT, SINT	
Status	24	R / W	UINT	
Counters	23	R / W	UINT	
Time	22	R / W	REAL	
Driver variable	35	R / W	BOOL, SINT, USINT, INT, UINT, DINT, UDINT, REAL, STRING	<p>Variables for the statistical analysis of communication.</p> <p>Find out more in the chapter about the Driver variables (on page 29)</p>

Mapping of the data types

All variables in zenon are derived from IEC data types. The following table compares the IEC datatypes with the datatypes of the PLC.

EXAMPLE FOR ALL POSSIBLE ZENON DATA TYPES

PLC	zenon
(M) BOOL	BOOL
(MB) BYTE/CHAR	USINT/SINT
(MW) WORD/INT	UINT/INT
(D) BOOL	BOOL
(DL/DR) BYTE/CHAR	USINT/SINT
(DW) WORD/INT	UINT/INT
(DD) DWORD/DINT	UDINT/DINT
STRING	STRING
(I) BOOL	BOOL
(IB) BYTE/CHAR	USINT/SINT
(IW) WORD/INT	UINT/INT
(Q) BOOL	BOOL
(QB) BYTE/CHAR	USINT/SINT
(QW) WORD/INT	UINT/INT
COUNTER (C) WORD	UINT/INT
STATUS WORD	UINT/INT
TIME (T) REAL	REAL

Data type: The property `Data type` is the internal numerical name of the data type. It is also used for the extended DBF import/export of the variables.

2.5.4 Creating variables by importing

Variables can also be imported by importing them. The XML and DBF import is available for every driver.

**Info**

You can find details on the import and export of variables in the Import-Export (main.chm::/13028.htm) manual in the Variables (main.chm::/13045.htm) section.

XML import of variables from another zenon project

For the import/export of variables the following is true:

- ▶ The import/export must not be started from the global project.
- ▶ The start takes place via:
 - Context menu of variables or data typ in the project tree
 - or context menu of a variable or a data type
 - or symbol in the symbol bar variables

**Attention**

When importing/overwriting an existing data type, all variables based on the existing data type are changed.

Example:

There is a data type XYZ derived from the type `INT` with variables based on this data type. The XML file to be imported also contains a data type with the name XYZ but derived from type `STRING`. If this data type is imported, the existing data type is overwritten and the type of all variables based on it is adjusted. I.e. the variables are now no longer `INT` variables, but `STRING` variables.

DBF Import/Export

Data can be exported to and imported from dBase.

**Info**

Import and Export via CSV or dBase supported; no driver specific variable settings, such as formulas. Use export/import via XML for this.

IMPORT DBF FILE

To start the import:

1. right-click on the variable list
2. in the drop-down menu of **Extended export/import...** select the **Import dBase** command
3. follow the import assistant

The format of the file is described in the chapter File structure.

**Info**

Note:

- ▶ Driver object type and data type must be amended to the target driver in the DBF file in order for variables to be imported.
- ▶ dBase does not support structures or arrays (complex variables) at import.

EXPORT DBF FILE

To start the export:

1. right-click on the variable list
2. in the drop-down menu of **Extended export/import...** select the **Import dBase** command
3. follow the export assistant

**Attention**

DBF files:

- ▶ must correspond to the 8.3 DOS format for filenames (8 alphanumeric characters for name, 3 character suffix, no spaces)
- ▶ must not have dots (.) in the path name.
e.g. the path `C:\users\John.Smith\test.dbf` is invalid.
Valid: `C:\users\JohnSmith\test.dbf`
- ▶ must be stored close to the root directory in order to fulfill the limit for file name length including path: maximum 255 characters

The format of the file is described in the chapter File structure.

**Info**

dBase does not support structures or arrays (complex variables) at export.

File structure of the dBase export file.

The dBaseIV file must have the following structure and contents for variable import and export:

Attention

dBase does not support structures or arrays (complex variables) at export.

DBF files must:

- ▶ conform with there name to the 8.3 DOS format (8 alphanumeric characters for name, 3 characters for extension, no space)
- ▶ Be stored close to the root directory (Root)

DESIGN

Description	Type	Field size	Comment
KANALNAME	Char	128	Variable name. The length can be limited using the MAX_LAENGE entry in project.ini .
KANAL_R	C	128	The original name of a variable that is to be replaced by the new name entered under "VARIABLENNAME" (field/column must be entered manually). The length can be limited using the MAX_LAENGE entry in project.ini .
KANAL_D	Log	1	The variable is deleted with the 1 entry (field/column has to be created by hand).
TAGNR	C	128	Identification. The length can be limited using the MAX_LAENGE entry in project.ini .
Unit	C	11	Technical unit
DATENART	C	3	Data type (e.g. bit, byte, word, ...) corresponds to the data type.
KANALTYP	C	3	Memory area in the PLC (e.g. marker area, data area, ...) corresponds to the driver object type.
HWKANAL	Num	3	Bus address
BAUSTEIN	N	3	Datablock address (only for variables from the data area of the PLC)
ADRESSE	N	5	Offset

BITADR	N	2	For bit variables: bit address For byte variables: 0=lower, 8=higher byte For string variables: Length of string (max. 63 characters)
ARRAYSIZE	N	16	Number of variables in the array for index variables ATTENTION: Only the first variable is fully available. All others are only available for VBA or the Recipe Group Manager
LES_SCHR	R	1	Write-Read-Authorization 0: Not allowed to set value. 1: Allowed to set value.
MIT_ZEIT	R	1	time stamp in zenon zenon (only if supported by the driver)
OBJEKT	N	2	Driver-specific ID number of the primitive object comprises TREIBER-OBJEKTYP and DATENTYP
SIGMIN	Float	16	Non-linearized signal - minimum (signal resolution)
SIGMAX	F	16	Non-linearized signal - maximum (signal resolution)
ANZMIN	F	16	Technical value - minimum (measuring range)
ANZMAX	F	16	Technical value - maximum (measuring range)
ANZKOMMA	N	1	Number of decimal places for the display of the values (measuring range)
UPDATERATE	F	19	Update rate for mathematics variables (in sec, one decimal possible) not used for all other variables
MENTIEFE	N	7	Only for compatibility reasons
HDRATE	F	19	HD update rate for historical values (in sec, one decimal possible)
HDTIEFE	N	7	HD entry depth for historical values (number)
NACHSORT	R	1	HD data as postsorted values
DRRATE	F	19	Updating to the output (for zenon DDE server, in [s], one decimal possible)
HYST_PLUS	F	16	Positive hysteresis, from measuring range
HYST_MINUS	F	16	Negative hysteresis, from measuring range
PRIOR	N	16	Priority of the variable
REAMATRIZE	C	32	Allocated reaction matrix

ERSATZWERT	F	16	Substitute value, from measuring range
SOLLMIN	F	16	Minimum for set value actions, from measuring range
SOLLMAX	F	16	Maximum for set value actions, from measuring range
VOMSTANDBY	R	1	Get value from standby server; the value of the variable is not requested from the server but from the standby-server in redundant networks
RESOURCE	C	128	Resources label. Free string for export and display in lists. The length can be limited using the MAX_LAENGE entry in project.ini .
ADJWVBA	R	1	Non-linear value adaption: 0: Non-linear value adaption is used 1: Non-linear value adaption is not used
ADJZENON	C	128	Linked VBA macro for reading the variable value for non-linear value adjustment.
ADJWVBA	C	128	ed VBA macro for writing the variable value for non-linear value adjustment.
ZWREMA	N	16	Linked counter REMA.
MAXGRAD	N	16	Gradient overflow for counter REMA.



Attention

When importing, the driver object type and data type must be amended to the target driver in the DBF file in order for variables to be imported.

LIMIT DEFINITION

Limit definition for limit values 1 to 4, and status 1 bis 4:

Description	Type	Field size	Comment
AKTIV1	R	1	Limit value active (per limit value available)
GRENZWERT1	F	20	hnical value or ID number of a linked variable for a dynamic limit (see VARIABLEx) (if VARIABLEx is 1 and here it is -1, the existing variable linkage is not overwritten)
SCHWWERT1	F	16	Threshold value for limit
HYSTERESE1	F	14	Is not used
BLINKEN1	R	1	Set blink attribute
BTB1	R	1	Logging in CEL
ALARM1	R	1	Alarm
DRUCKEN1	R	1	Printer output (for CEL or Alarm)
QUITTIER1	R	1	Must be acknowledged
LOESCHE1	R	1	Must be deleted
VARIABLE1	R	1	Dyn. limit value linking the limit is defined by an absolute value (see field GRENZWERTx).
FUNC1	R	1	Functions linking
ASK_FUNC1	R	1	Execution via Alarm Message List
FUNC_NR1	N	10	ID number of the linked function (if "-1" is entered here, the existing function is not overwritten during import)
A_GRUPPE1	N	10	Alarm/event group
A_KLASSE1	N	10	Alarm/event class
MIN_MAX1	C	3	Minimum, Maximum
FARBE1	N	10	Color as Windows coding
GRENZTXT1	C	66	Limit value text
A_DELAY1	N	10	Time delay
INVISIBLE1	R	1	Invisible

EXPRESSIONS IN THE COLUMN "COMMENT" REFER TO THE EXPRESSIONS USED IN THE DIALOG BOXES FOR THE DEFINITION OF VARIABLES. FOR MORE INFORMATION, SEE CHAPTER VARIABLE DEFINITION.

2.5.5 Treibervariablen

The driver kit implements a number of driver variables. These are divided into:

- ▶ Information
- ▶ Configuration
- ▶ Statistics and
- ▶ Error messages

The definitions of the variables defined in the driver kit are available in the import file `drvvar.dbf` (on the CD in the directory: `CD_Drive:/Predefined/Variables`) and can be imported from there.

Note: Variable names must be unique in zenon. If driver variables are to be imported from `drvvar.dbf` again, the variables that were imported beforehand must be renamed.



Info

Not every driver supports all driver variants.

For example:

- ▶ Variables for modem information are only supported by modem-compatible drivers
- ▶ Driver variables for the polling cycle only for pure polling drivers
- ▶ Connection-related information such as ErrorMSG only for drivers that only edit one connection at a time

INFORMATION

Name from import	Type	Offset	Description
MainVersion	UINT	0	Main version number of the driver.
SubVersion	UINT	1	Sub version number of the driver.
BuildVersion	UINT	29	Build version number of the driver.
RTMajor	UINT	49	zenon main version number
RTMinor	UINT	50	zenon sub version number
RTSp	UINT	51	zenon service pack number
RTBuild	UINT	52	zenon build number
LineStateIdle	BOOL	24.0	TRUE, if the modem connection is idle
LineStateOffering	BOOL	24.1	TRUE, if a call is received
LineStateAccepted	BOOL	24.2	The call is accepted
LineStateDialtone	BOOL	24.3	Dialtone recognized
LineStateDialing	BOOL	24.4	Dialing active
LineStateRingBack	BOOL	24.5	While establishing the connection
LineStateBusy	BOOL	24.6	Target station is busy
LineStateSpecialInfo	BOOL	24.7	Special status information received
LineStateConnected	BOOL	24.8	Connection established
LineStateProceeding	BOOL	24.9	Dialing completed
LineStateOnHold	BOOL	12:00 AM	Connection in hold
LineStateConferenced	BOOL	12:00 AM	Connection in conference mode.
LineStateOnHoldPendConf	BOOL	12:00 AM	Connection in hold for conference
LineStateOnHoldPendTransfer	BOOL	24.13	Connection in hold for transfer
LineStateDisconnected	BOOL	24.14	Connection terminated.
LineStateUnknow	BOOL	24.15	Connection status unknown

ModemStatus	UDINT	24	Current modem status
TreiberStop	BOOL	28	Driver stopped For <code>driver stop</code> , the variable has the value <code>TRUE</code> and an <code>OFF</code> bit. After the driver has started, the variable has the value <code>FALSE</code> and no <code>OFF</code> bit.
SimulRTState	UDINT	60	Informs the status of Runtime for driver simulation.

CONFIGURATION

Name from import	Type	Offset	Description
ReconnectInRead	BOOL	27	If <code>TRUE</code> , the modem is automatically reconnected for reading
ApplyCom	BOOL	36	Apply changes in the settings of the serial interface. Writing to this variable immediately results in the method <code>SrvDrvVarApplyCom</code> being called (which currently has no further function).
ApplyModem	BOOL	37	Apply changes in the settings of the modem. Writing this variable immediately calls the method <code>SrvDrvVarApplyModem</code> . This closes the current connection and opens a new one according to the settings <code>PhoneNumberSet</code> and <code>ModemHwAdrSet</code> .
PhoneNumberSet	STRING	38	Telephone number, that should be used
ModemHwAdrSet	DINT	39	Hardware address for the telephone number
GlobalUpdate	UDINT	3	Update time in milliseconds (ms).
BGlobalUpdaten	BOOL	4	<code>TRUE</code> , if update time is global
TreiberSimul	BOOL	5	<code>TRUE</code> , if driver in sin simulation mode
TreiberProzab	BOOL	6	<code>TRUE</code> , if the variables update list should be

			kept in the memory
ModemActive	BOOL	7	TRUE, if the modem is active for the driver
Device	STRING	8	Name of the serial interface or name of the modem
ComPort	UINT	9	Number of the serial interface.
Baud rate	UDINT	10	Baud rate of the serial interface.
Parity	SINT	11	Parity of the serial interface
ByteSize	USINT	14	Number of bits per character of the serial interface Value = 0 if the driver cannot establish any serial connection.
StopBit	USINT	13	Number of stop bits of the serial interface.
Autoconnect	BOOL	16	TRUE, if the modem connection should be established automatically for reading/writing
PhoneNumber	STRING	17	Current telephone number
ModemHwAdr	DINT	21	Hardware address of current telephone number
RxIdleTime	UINT	18	Modem is disconnected, if no data transfer occurs for this time in seconds (s)
WriteTimeout	UDINT	19	Maximum write duration for a modem connection in milliseconds (ms).
RingCountSet	UDINT	20	Number of ringing tones before a call is accepted
ReCallIdleTime	UINT	53	Waiting time between calls in seconds (s).
ConnectTimeout	UINT	54	Time in seconds (s) to establish a connection.

STATISTICS

Name from import	Type	Offset	Description
MaxWriteTime	UDINT	31	The longest time in milliseconds (ms) that is required for writing.
MinWriteTime	UDINT	32	The shortest time in milliseconds (ms) that is required for writing.
MaxBlkReadTime	UDINT	40	Longest time in milliseconds (ms) that is required to read a data block.
MinBlkReadTime	UDINT	41	Shortest time in milliseconds (ms) that is required to read a data block.
WriteErrorCount	UDINT	33	Number of writing errors
ReadSucceedCount	UDINT	35	Number of successful reading attempts
MaxCycleTime	UDINT	22	Longest time in milliseconds (ms) required to read all requested data.
MinCycleTime	UDINT	23	Shortest time in milliseconds (ms) required to read all requested data.
WriteCount	UDINT	26	Number of writing attempts
ReadErrorCount	UDINT	34	Number of reading errors
MaxUpdateTimeNormal	UDINT	56	Time since the last update of the priority group Normal in milliseconds (ms).
MaxUpdateTimeHigher	UDINT	57	Time since the last update of the priority group Higher in milliseconds (ms).
MaxUpdateTimeHigh	UDINT	58	Time since the last update of the priority group High in milliseconds (ms).
MaxUpdateTimeHighest	UDINT	59	Time since the last update of the priority group Highest in milliseconds (ms).

PokeFinish	BOOL	55	Goes to 1 for a query, if all current pokes were executed
------------	------	----	---

ERROR MESSAGES

Name from import	Type	Offset	Description
ErrorTimeDW	UDINT	2	Time (in seconds since 1.1.1970), when the last error occurred.
ErrorTimeS	STRING	2	Time (in seconds since 1.1.1970), when the last error occurred.
RdErrPrimObj	UDINT	42	Number of the PrimObject, when the last reading error occurred.
RdErrStationsName	STRING	43	Name of the station, when the last reading error occurred.
RdErrBlockCount	UINT	44	Number of blocks to read when the last reading error occurred.
RdErrHwAdresse	DINT	45	Hardware address when the last reading error occurred.
RdErrDatablockNo	UDINT	46	Block number when the last reading error occurred.
RdErrMarkerNo	UDINT	47	Marker number when the last reading error occurred.
RdErrSize	UDINT	48	Block size when the last reading error occurred.
DrvError	USINT	25	Error message as number
DrvErrorMsg	STRING	30	Error message as text
ErrorFile	STRING	15	Name of error log file

2.6 Driver-specific functions

This driver supports the following functions:

For S5	
Datablocks	max 256
Datawords / DB	max 256

For S7	
Datablocks	max 65536
Datawords / DB	max 65536

Time delay	220ms
Acknowledgement delay	2000ms
Datawords / DB	max 65536

If the driver for the connection to MPI via the Helmholtz adapter is used, only one CPU can be accessed. Because there is no Net address in the protocol. So also in the variable definition the bus address is not supported.

COMMUNICATION WITH THE CP 525:

The following target types can be written	Datablocks
	System data
	Absolute addresses

The following source types can be read	Datablocks
	Marker bytes
	Input bytes
	Output bytes
	Periphery bytes
	Time cells

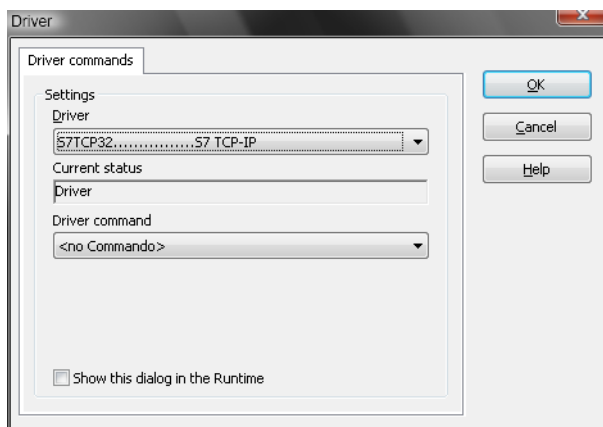
	Counter cells
	System data
	Absolute addresses

2.7 Driver commands

This chapter describes standard functions that are valid for most zenon drivers. Not all functions described here are available for every driver. For example, a driver that does not, according to the data sheet, support a modem connection also does not have any modem functions.

Driver commands are used to influence drivers using zenon; start and stop for example. The engineering is implemented with the help of function **Driver commands**. To do this:

- ▶ create a new function
- ▶ select *Variables -> Driver commands*
- ▶ The dialog for configuration is opened



Parameters	Description
Drivers	Drop-down list with all drivers which are loaded in the project.
Current state	Fixed entry which has no function in the current version.
Driver commands	Drop-down list for the selection of the command.
▶ Start driver (online	Driver is reinitialized and started.

mode)	
▶ Stop driver (offline mode)	Driver is stopped. No new data is accepted. Note: If the driver is in offline mode, all variables that were created for this driver receive the status switched off (OFF; Bit 20).
▶ Driver in simulation mode	Driver is set into simulation mode. The values of all variables of the driver are simulated by the driver. No values from the connected hardware (e.g. PLC, bus system, ...) are displayed.
▶ Driver in hardware mode	Driver is set into hardware mode. For the variables of the driver the values from the connected hardware (e.g. PLC, bus system, ...) are displayed.
▶ Driver-specific command	Enter driver-specific commands. Opens input field in order to enter a command.
▶ Activate driver write set value	Write set value to a driver is allowed.
▶ Deactivate driver write set value	Write set value to a driver is prohibited.
▶ Establish connection with modem	Establish connection (for modem drivers) Opens the input fields for the hardware address and for the telephone number.
▶ Disconnect from modem	Terminate connection (for modem drivers)
Show this dialog in the Runtime	The dialog is shown in Runtime so that changes can be made.

DRIVER COMMANDS IN THE NETWORK

If the computer, on which the **driver command** function is executed, is part of the zenon network, additional actions are carried out. A special network command is sent from the computer to the project server, which then executes the desired action on its driver. In addition, the Server sends the same driver command to the project standby. The standby also carries out the action on its driver.

This makes sure that Server and Standby are synchronized. This only works if the Server and the Standby both have a working and independent connection to the hardware.

2.8 Error analysis

Should there be communication problems, this chapter will assist you in finding out the error.

2.8.1 Analysis tool

All zenon modules such as Editor, Runtime, drivers, etc. write messages to a joint log file. To display them correctly and clearly, use the Diagnosis Viewer (main.chm::/12464.htm) program that was also installed with zenon. You can find it under *Start/All programs/zenon/Tools 7.10 -> Diagviewer*.

zenon driver log all errors in the log files. The default folder for the log files is subfolder **LOG** in directory **ProgramData**, example:

C:\ProgramData\zenon\zenon7.10\LOG for zenon Version 7.10. Log files are text files with a special structure.

Attention: With the default settings, a driver only logs error information. With the **Diagnosis Viewer** you can enhance the diagnosis level for most of the drivers to "Debug" and "Deep Debug". With this the driver also logs all other important tasks and events.

In the Diagnosis Viewer you can also:

- ▶ follow currently created entries live
- ▶ customize the logging settings
- ▶ change the folder in which the log files are saved

Hints:

1. In Windows CE even errors are not logged per default due to performance reasons.
2. The Diagnosis Viewer displays all entries in UTC (coordinated world time) and not in local time.
3. The Diagnosis Viewer does not display all columns of a log file per default. To display more columns activate property **Add all columns with entry** in the context menu of the column header.
4. If you only use **Error logging**, the problem description is in column **Error**

text. For other diagnosis level the description is in column **General text**.

5. For communication problems many drivers also log error numbers which the PLC assigns to them. They are displayed in **Error text** and/or **Error code** and/or **Driver error parameter** (1 and 2). Hints on the meaning of error codes can be found in the driver documentation and the protocol/PLC description.
6. At the end of your test set back the diagnosis level from **Debug** Or **Deep Debug**. At **Debug** and **Deep Debug** there are a great deal of data for logging which are saved to the hard drive and which can influence your system performance. They are still logged even after you close the **Diagnosis Viewer**.



Info

You can find further information on the Diagnosis Viewer in the Diagnose Viewer (main.chm::/12464.htm) chapter.

2.8.2 Error numbers

ERROR CODES

In case of communication problems, an entry in the error log file of the driver is generated, in which the error cause is specified with a number.

Error number	Description
-10	Receive tries exceeded
-11	No response of converter
-12	First character is no STX.
-13	Data not received.

-14	Synchronization error
-20	Writing tries exceeded
-21	Writing permission not received.
-22	Writing error
-40	Exit due to program end
Positive	Error code according to RK512

2.8.3 Check list

- ▶ Is the COM port in use by another application or are the settings incorrect?
- ▶ Is the device (PLC) that you are trying to communicate with connected to the power supply?
- ▶ Is the cable between PLC and PC/IPC connected correctly?
- ▶ Are the used datablocks defined correctly in the PLC?