



COPADATA
do it your way

zenon driver manual

stratonNG

v.7.20





©2015 Ing. Punzenberger COPA-DATA GmbH

All rights reserved.

Distribution and/or reproduction of this document or parts thereof in any form are permitted solely with the written permission of the company COPA-DATA. Technical data is only used for product description and are not guaranteed qualities in the legal sense. Subject to change, technical or otherwise.

Contents

1. Welcome to COPA-DATA help	4
2. stratonNG	4
3. STRATONNG - Data sheet.....	5
4. Driver history	6
5. Configuration	7
5.1 Creating a driver.....	7
5.2 Settings in the driver dialog	9
5.2.1 General	9
5.2.2 Options	13
5.2.3 Connections.....	14
6. Creating variables.....	18
6.1 Creating variables in the Editor.....	18
6.2 Addressing.....	21
6.3 Driver objects and datatypes	24
6.3.1 Driver objects	24
6.3.2 Mapping of the data types	25
6.4 Creating variables by importing	26
6.4.1 XML import.....	26
6.4.2 DBF Import/Export	27
6.4.3 Online import	32
6.5 Driver variables	34
7. Driver-specific functions	41
8. Driver commands	43
9. Error analysis.....	46
9.1 Analysis tool	46
9.2 Check list	47

1. Welcome to COPA-DATA help

GENERAL HELP

If you cannot find any information you require in this help chapter or can think of anything that you would like added, please send an email to documentation@copadata.com (<mailto:documentation@copadata.com>).

PROJECT SUPPORT

You can receive support for any real project you may have from our Support Team, who you can contact via email at support@copadata.com (<mailto:support@copadata.com>).

LICENSES AND MODULES

If you find that you need other modules or licenses, our staff will be happy to help you. Email sales@copadata.com (<mailto:sales@copadata.com>).

2. stratonNG

The driver is used for connecting on or more zenon Logic controls via a TCP/IP connection.



Information

*Array variables that are based on the stratonNG driver must not start with 1. This means:
A zenon array with dimensions 1, 2, 2 is created as a simple variable in zenon Logic.*

3. STRATONNG - Data sheet

General:	
Driver file name	STRATONNG.exe
Driver name	straton NG driver
PLC types	PLCs based on the straton VMTK. Straton RT / zenonLogic RT
PLC manufacturer	Brodersen; Wago; straton; Copalp;

Driver supports:	
Protocol	TCP/IP;
Addressing: Address-based	-
Addressing: Name-based	x
Spontaneous communication	x
Polling communication	x
Online browsing	x
Offline browsing	-
Real-time capable	x
Blockwrite	x
Modem capable	-
Serial logging	-
RDA numerical	x
RDA String	-

Requirements:	
Hardware PC	-
Software PC	-
Hardware PLC	-
Software PLC	-
Requires v-dll	-

Platforms:	
Operating systems	Windows CE 6.0, Embedded Compact 7; Windows 7, 8, 8.1 Server 2008R2, Server 2012, Server 2012R2;
CE platforms	x86; ARM;

4. Driver history

Date	Driver version	Change
1/9/2010	100	Driver was created newly
3/16/2010	200	Driver configuration designed newly

DRIVER VERSIONING

The versioning of the drivers was changed with zenon 7.10. There is a cross-version build number as of this version. This is the number in the 4th position of the file version,
For example: 7.10.0.4228 means: The driver is for version 7.10 service pack 0, and has the build number 4228.

Expansions or error rectifications will be incorporated into a build in the future and are then available from the next consecutive build number.



Example

A driver extension was implemented in build 4228. The driver that you are using is build number 8322. Because the build number of your driver is higher than the build number of the extension, the extension is included. The version number of the driver (the first three digits of the file version) do not have any significance in relation to this. The drivers are version-agnostic

5. Configuration

In this chapter you will learn how to use the driver in a project and which settings you can change.



Information

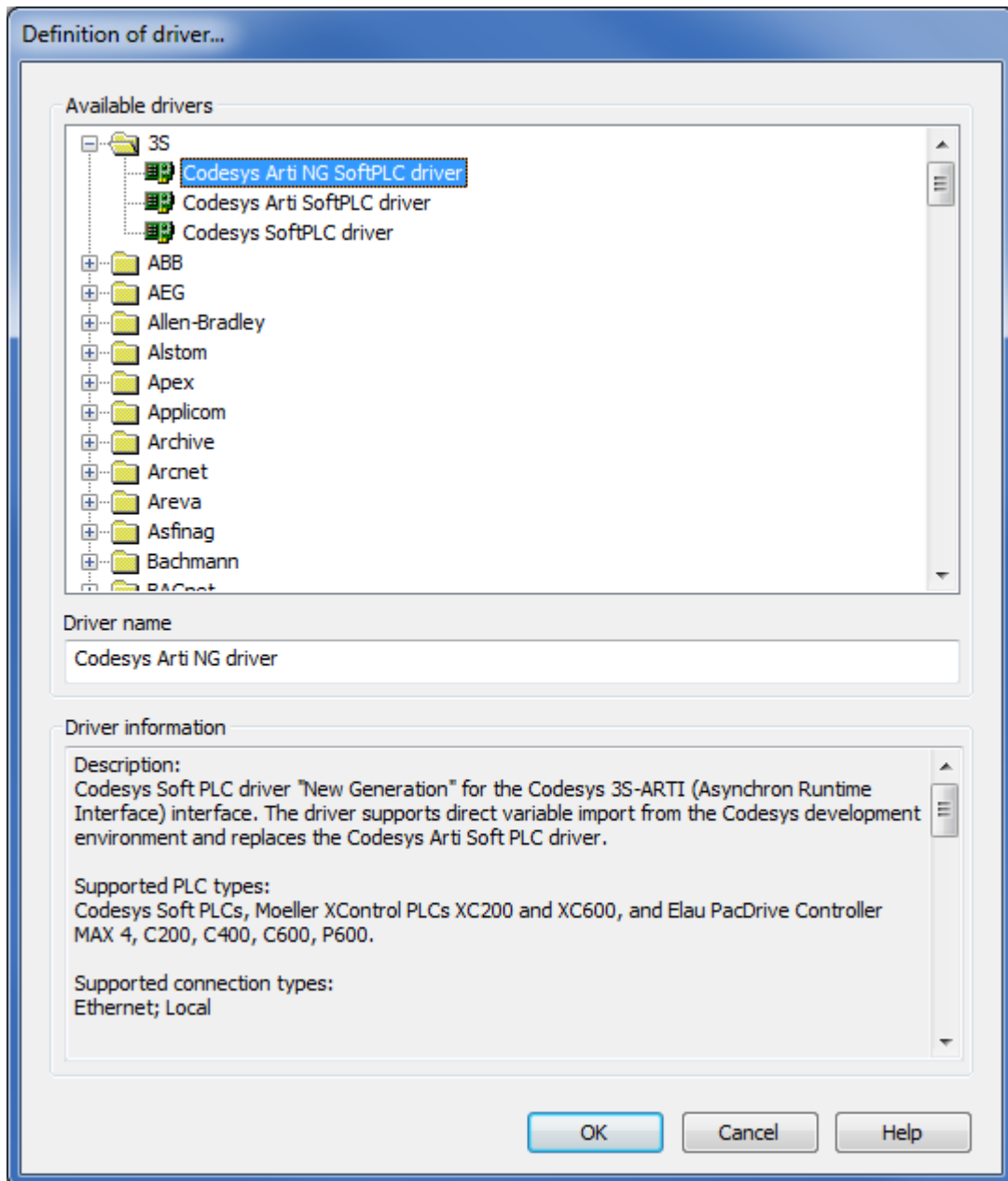
Find out more about further settings for zenon variables in the chapter Variables (main.chm::/15247.htm) of the online manual.

5.1 Creating a driver

In order to create a new driver:

1. Right-click on **Driver** in the Project Manage and select **Driver new** in the context menu.

2. In the following dialog the control system offers a list of all available drivers.



3. Select the desired driver and give it a name:
 - The driver name has to be unique, i.e. if one and the same driver is to be used several times in one project, a new name has to be given each time.
 - The driver name is part of the file name. Therefore it may only contain characters which are supported by the operating system. Invalid characters are replaced by an underscore (_).
 - **Attention:** This name cannot be changed later on.

4. Confirm the dialog with **OK**. In the following dialog the single configurations of the drivers are defined.

Only the respective required drivers need to be loaded for a project. Later loading of an additional driver is possible without problems.



Information

For new projects and for existing projects which are converted to version 6.21 or higher, the following drivers are created automatically:

- ▶ Internal
- ▶ MathDr32
- ▶ SysDrv.

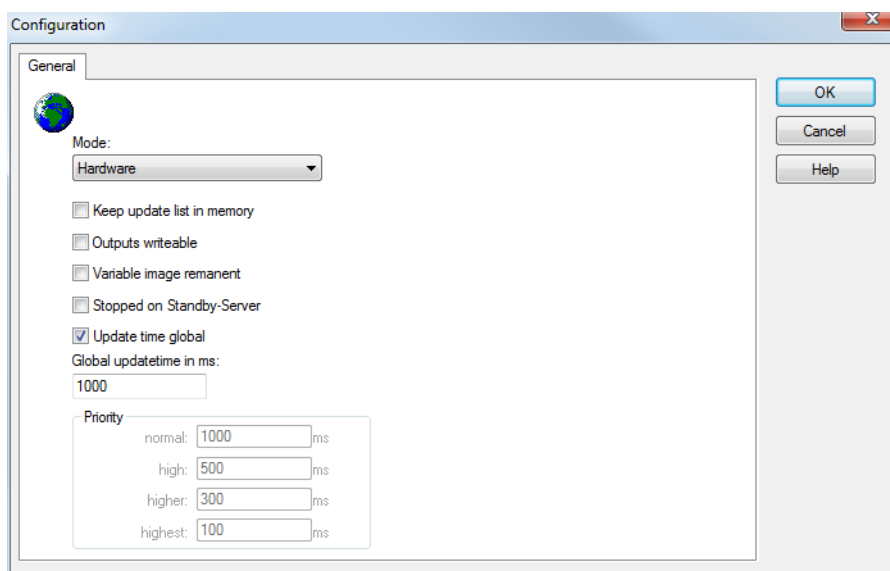
▶

5.2 Settings in the driver dialog

You can change the following settings of the driver:

5.2.1 General

The configuration dialog is opened when a driver is created. In order to be able to open the dialog later for editing, double click on the driver in the list or click on the **Configuration** property.



Parameters	Description
Mode	<p>Allows to switch between hardware mode and simulation mode</p> <ul style="list-style-type: none"> ▶ Hardware: <p>A connection to the control is established.</p> ▶ Simulation static <p>No communication between to the control is established, the values are simulated by the driver. In this modus the values remain constant or the variables keep the values which were set by zenon Logic. Each variable has its own memory area. E.g. two variables of the type marker with offset 79 can have different values in the Runtime and do not influence each other. Exception: The simulator driver.</p> ▶ Simulation - counting <p>No communication between to the control is established, the values are simulated by the driver. In this modus the driver increments the values within a value range automatically.</p> ▶ Simulation - programmed <p>N communication is established to the PLC. The values are calculated by a freely programmable simulation project. The simulation project is created with the help of the zenon Logic Workbench and runs in a zenon Logic Runtime which is integrated in the driver. For details see chapter Driver simulation (main.chm::/25206.htm).</p>
Keep update list in the memory	<p>Variables which were requested once are still requested from the control even if they are currently not needed. This has the advantage that e.g. multiple screen switches after the screen was opened for the first time are executed faster because the variables need not be requested again. The disadvantage is a higher load for the communication to the control.</p>
Output can be written	<p>Active: Outputs can be written.</p> <p>Inactive: Writing of outputs is prevented.</p> <p>Note: Not available for every driver.</p>
Variable image remanent	<p>This option saves and restores the current value, time stamp and the states of a data point.</p> <p>Fundamental requirement: The variable must have a valid value and time stamp.</p>

	<p>The variable image is saved in mode hardware if:</p> <ul style="list-style-type: none"> ▶ one of the states S_MERKER_1(0) up to S_MERKER8(7), REVISION(9), AUS(20) or ERSATZWERT(27) is active <p>The variable image is always saved if:</p> <ul style="list-style-type: none"> ▶ the variable is of the object type Driver variable ▶ the driver runs in simulation mode. (not programmed simulation) <p>The following states are not restored at the start of the Runtime:</p> <ul style="list-style-type: none"> ▶ SELECT(8) ▶ WR-ACK(40) ▶ WR-SUC(41) <p>The mode Simulation - programmed at the driver start is not a criterion in order to restore the remanent variable image.</p>
Stop on Standby Server	<p>Setting for redundancy at drivers which allow only on communication connection. For this the driver is stopped at the Standby Server and only started at the upgrade.</p> <p>Attention: If this option is active, the gapless archiving is no longer guaranteed.</p> <p>Active: Sets the driver at the not-process-leading Server automatically in a stop-like state. In contrast to stopping via driver command, the variable does not receive status switched off (statusverarbeitung.chm::/24150.htm) but an empty value. This prevents that at the upgrade to the Server irrelevant values are created in the AML, CEL and Historian.</p> <p>Note: Not available if the CE terminal serves as a data server. You can find further information in the zenon Operator manual in the CE terminal as a data server chapter.</p>
Global Update time	<p>Active: The set Global update time in ms is used for all variables in the project. The priority set at the variables is not used.</p> <p>Inactive: The set priorities are used for the individual variables.</p>
Priority	<p>The polling times for the individual priority classes are set here. All variables with the according priority are polled in the set time.</p> <p>The allocation to the variables takes place separately in the settings of the variable properties.</p> <p>The communication of the individual variables are graduated in respect of importance or necessary topicality using the priorities.</p>

	<p>Thus the communication load is distributed better.</p> <p>Attention: Priority classes are not supported by each driver For example, drivers that communicate spontaneously do not support it.</p>
--	---

CLOSE DIALOG

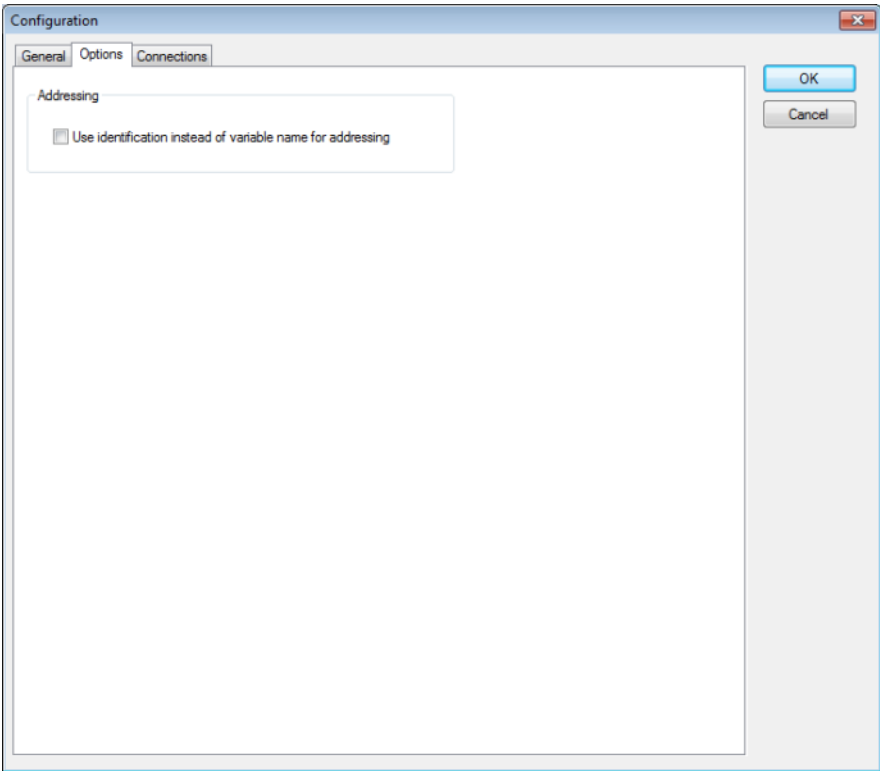
Parameters	Description
OK	Applies all changes in all tabs and closes the dialog.
Cancel	Discards all changes in all tabs and closes the dialog.
Help	Opens online help.

UPDATE TIME FOR CYCLICAL DRIVERS

The following applies for cyclical drivers:

For **Set value**, **Advising** of variables and **Requests**, a read cycle is immediately triggered for all drivers - regardless of the set update time. This ensures that the value is immediately available for visualization after writing. Update times can therefore be shorter than pre-set for cyclical drivers.

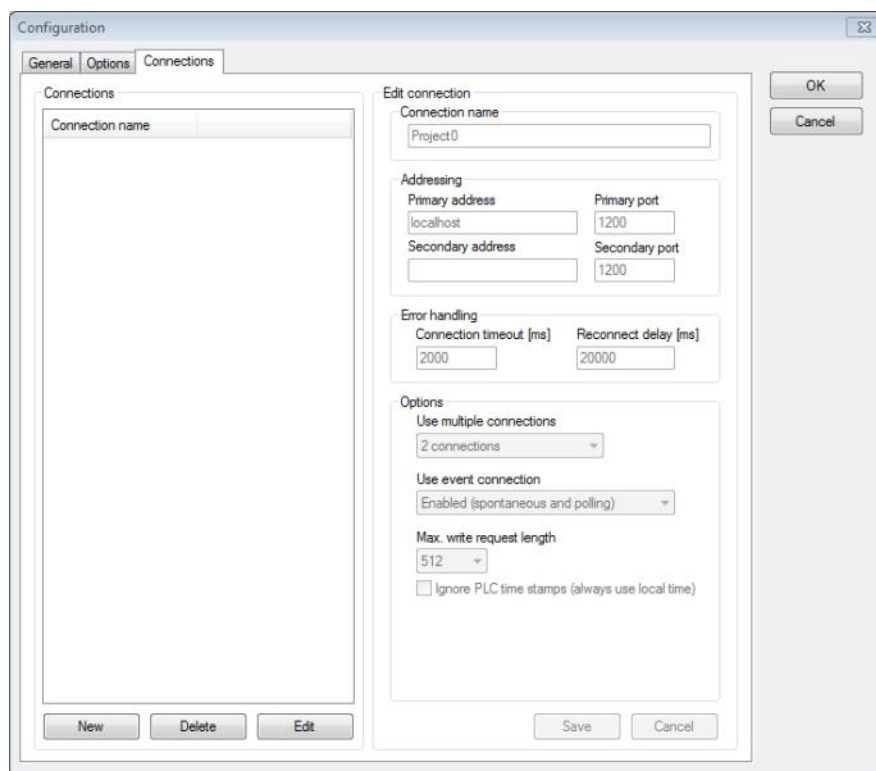
5.2.2 Options



Parameters	Description
Use identification instead of variable name for addressing	Instead of the variable name the identification is used for addressing. The variable name can then be used freely. The variable name (or identification) must comply with the following pattern <zenon Logic project>/<area>/<zenon Logic variable name>.

5.2.3 Connections

LIST OF THE CONNECTIONS AND CONNECTION-SPECIFIC SETTINGS



The screenshot shows the 'Configuration' dialog box with the 'Connections' tab selected. The dialog is divided into two main sections. On the left, there is a list of connections with a header 'Connection name' and a single entry 'Project0'. Below this list are buttons for 'New', 'Delete', and 'Edit'. On the right, the 'Edit connection' section is active, showing settings for 'Project0'. This section includes fields for 'Primary address' (localhost), 'Primary port' (1200), 'Secondary address', and 'Secondary port' (1200). Below these are 'Error handling' settings: 'Connection timeout [ms]' (2000) and 'Reconnect delay [ms]' (20000). The 'Options' section includes a dropdown for 'Use multiple connections' (set to '2 connections'), a dropdown for 'Use event connection' (set to 'Enabled (spontaneous and polling)'), a dropdown for 'Max. write request length' (set to '512'), and a checkbox for 'Ignore PLC time stamps (always use local time)' which is currently unchecked. At the bottom right of the dialog are 'OK' and 'Cancel' buttons. At the bottom center are 'Save' and 'Cancel' buttons.

Connections	
Connection name	
Project0	

Edit connection

Connection name: Project0

Addressing

Primary address	Primary port
localhost	1200
Secondary address	Secondary port
	1200

Error handling

Connection timeout [ms]	Reconnect delay [ms]
2000	20000

Options

Use multiple connections: 2 connections

Use event connection: Enabled (spontaneous and polling)

Max. write request length: 512

☐ Ignore PLC time stamps (always use local time)

Property	Description
Connections	Connection data
Connection name	Lists all configured connections.
New	Add a new connection to the list.
Delete	Delete the selected connection from the list.
Edit	Delete the selected connection.
Edit connection	Connection settings for a new connection or the connection selected under Connections .
Connection name	<p>Connection name.</p> <p>Is used for the allocation of the variables. The variable names (or optional the identification) must be in accordance with pattern <zenon Logic project>/<area>/<zenon Logic variable name>.</p> <p>Info: When using the integrated zenon Logic, the connection name must correspond to the name of the zenon Logic project exactly.</p> <p>Attention: The connection name must not contain any of the following characters: { } & ~ ! [] () " ' ; =</p>
Primary address	Address of the PLC (IP address or host name)
Primary port	<p>TCP port</p> <p>Default: 1200</p>
Secondary address	<p>Address of the secondary connection to the PLC (IP address or host name).</p> <p>If the first connection cannot or cannot be longer reached, it tries to reach the second address. At successful connection establishment this address is used for communication. Only after a renewed connection breakup or a driver restart, a connection to the primary address is tried again.</p>
Secondary port	<p>Secondary TCP port</p> <p>Default: 1200</p>
Error handling	Troubleshooting
Communication timeout [ms]	<p>Communication timeout.</p> <p>If the PLC is not reached within the set time, all variables</p>

	<p>are set to status <code>Invalid</code>. A renewed connection try ensues only after the set delay time (Reconnect delay) after a connection breakup.</p> <p>Default: 2000</p>
--	--

Reconnect delay [ms]	<p>Reconnect delay after connection loss (Communication timeout).</p> <p>After a connection error the set time period is waited until a new connection try is started.</p> <p>Default 20000</p>
Options	Tools
Use multiple connections	<p>Defines if several TCP connections should be established to the control in order to make a fast communication possible.</p> <ul style="list-style-type: none"> ▶ No (single connection): No multi-connections ▶ 2 connections: 2 connections ▶ - > up to 16 connections possible <p>Default: 2 connections</p> <p>Attention: How many simultaneous connections are supported by a zenon Logic Runtime depends on the zenon Logic Runtime. Note: If several drivers or the Workbench try to connect to the Runtime at the same time, all drivers and the Workbench must share the available connections.</p> <p>The COPA-DATA Runtime supports 16 simultaneous connections.</p>
Use event connection	<p>States if an event connection should be established to the zenon Logic Runtime.</p> <ul style="list-style-type: none"> ▶ Enabled (spontaneous and polling): Activate event connection; variables can be polled or read via events. ▶ Disabled (polling only): Event connection deactivated; variables can only be polled. <p>Default: Enabled (spontaneous and polling)</p> <p>If event mode is activated the status bits of a zenon Logic variable (if available) are transferred to the zenon variable. Transferred are:</p> <ul style="list-style-type: none"> ▶ I-Bit ▶ Bits 32 to 63
Max. write request length	<p>Maximum length of a write request in byte.</p> <ul style="list-style-type: none"> ▶ 512: 512 bytes

	<p>► 1024: 1024 bytes</p> <p>The longer a write request the more data can be transferred with one request and the faster larger amounts of values can be written.</p> <p>Attention: All connections share a 1024 byte buffer in the zenon Logic Runtime. In this buffer the write commands are cached. If write requests with a length of up to 1024 bytes are used, it is not possible to send write commands via several connections (several drivers, Workbench) simultaneously.</p> <p>Default: 512</p> <p>Note: If strings with a length of more than 245 characters are used, the Max. write request length must be set to 1024.</p>
Ignore PLC time stamps (always use local time)	Active: Time stamps which are sent by the zenon Logic Runtime are ignored. The time stamps of zenon are set.
Save	Saves changes.
Cancel	Discards changes.

6. Creating variables

This is how you can create variables in the zenon Editor:

6.1 Creating variables in the Editor

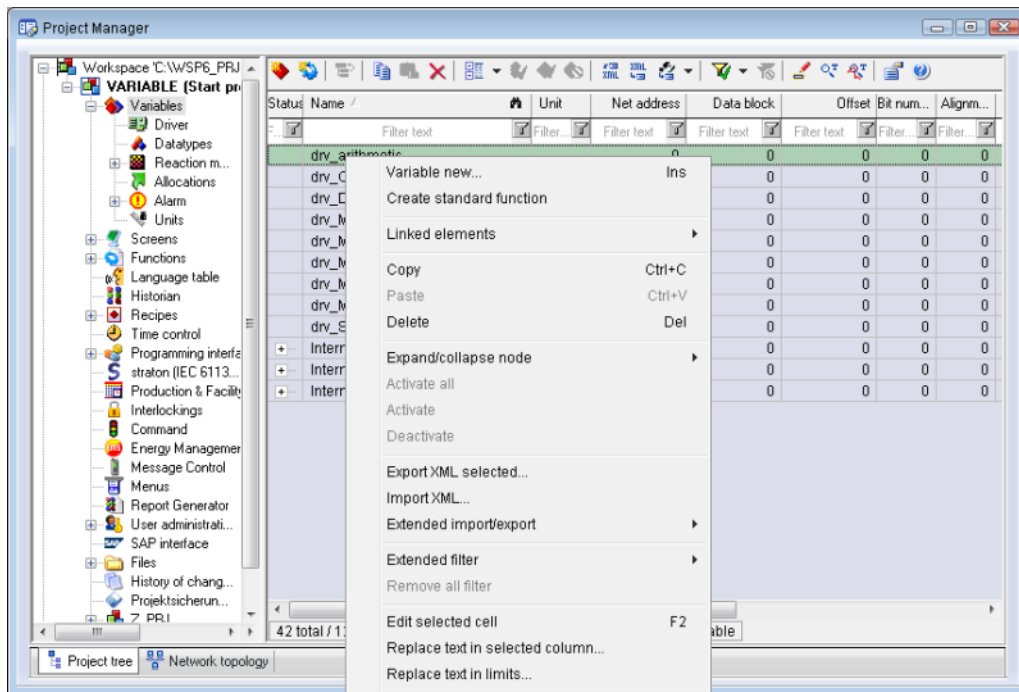
Variables can be created:

- as simple variables
- in arrays (main.chm::/15262.htm)
- as structure variables (main.chm::/15278.htm)

VARIABLE DIALOG

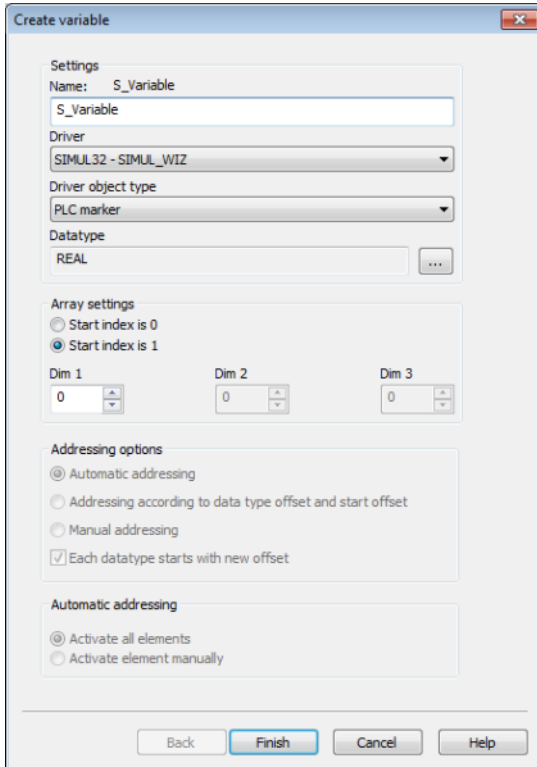
To create a new variable, regardless of which type:

1. Select the **New variable** command in the **Variables** node in the context menu



2. The dialog for configuring variables is opened
3. configure the variable

4. The settings that are possible depends on the type of variables



The screenshot shows the 'Create variable' dialog box with the following settings:

- Settings**
 - Name: S_Variable
 - Driver: SIMUL32 - SIMUL_WIZ
 - Driver object type: PLC marker
 - Datatype: REAL
- Array settings**
 - ☐ Start index is 0
 - ☒ Start index is 1
 - Dim 1: 0
 - Dim 2: 0
 - Dim 3: 0
- Addressing options**
 - ☒ Automatic addressing
 - ☐ Addressing according to data type offset and start offset
 - ☐ Manual addressing
 - ☒ Each datatype starts with new offset
- Automatic addressing**
 - ☒ Activate all elements
 - ☐ Activate element manually

Buttons at the bottom: Back, Finish, Cancel, Help.

Property	Description
Name	<p>Distinct name of the variable. If a variable with the same name already exists in the project, no additional variable can be created with this name.</p> <p>Maximum length: 128 Zeichen</p> <p>Attention: The characters # and @ are not permitted in variable names. If non-permitted characters are used, creation of variables cannot be completed and the Finish button remains inactive.</p> <p>Note: For some drivers, the addressing is possible over the property Symbolic address, as well.</p>
Driver	<p>Select the desired driver from the drop-down list.</p> <p>Note: If no driver has been opened in the project, the driver for internal variables (Intern.exe (Main.chm::/Intern.chm::/Intern.htm)) is automatically loaded.</p>
Driver object type (cti.chm::/28685.htm)	Select the appropriate driver object type from the drop-down list.
Data type	Select the desired data type. Click on the ... button to open the selection dialog.
Array settings	Expanded settings for array variables. You can find details in the Arrays chapter.
Addressing options	Expanded settings for arrays and structure variables. You can find details in the respective section.
Automatic element activation	Expanded settings for arrays and structure variables. You can find details in the respective section.

INHERITANCE FROM DATA TYPE

Measuring range, Signal range and Set value are always:

- ▶ derived from the datatype
- ▶ Automatically adapted if the data type is changed

Note for signal range: If a change is made to a data type that does not support the set **signal range**, the **signal range** is amended automatically. For example, for a change from **INT** to **SINT**, the **signal range** is changed to 127. The amendment is also carried out if the **signal range** was not inherited from the data type. In this case, the **measuring range** must be adapted manually.

6.2 Addressing

Variable addressing is name-based.

The following limitations for variable names must be considered:

The following characters are not allowed in names: "(*", "*)", "//", "{" und "}".

Not allowed at the start of variable names: "__" (=double underscore).

There are no further limitations for global variables of simple data types.

Structures and array variables must have IEC-compliant names. Exception: the structure/array names are put within curled brackets.

Example: {nonIECconform}.

The variable names must be put into curled brackets in the zenon Logic as well.

In zenon Logic, the limitation for local variables in the textbased programming languages ST(Structured Text) and IL(Instruction List) applies. Non IEC-compliant variables must be put into curled brackets as well.

Group/Property	Description
General	
Name	<p>Name of the variable consists of connection name, zenon Logic area and variable name.</p> <p>Syntax: <Connection name>/<zenon Logic area>/<variable name></p> <p><Connection name>: Name of connection</p> <p><zenon Logic area>: Name of the area: Global, Retain, IO name or name of the subprogram for local variables</p> <p><Variable name> : Name of the variable in the zenon Logic Runtime</p> <p>Examples: Project0/Global/Var1, Project0/Retain/Var2, Project0/%IX01/Var3, Project0/MyProg/</p>
Identification	Can be used as an alternative for addressing variables if it is set in the Options (on page 13) of the driver configuration. The format for name and identification is identical.
Addressing	
Net address	Not used
Data block	Not used
Offset	Byte offset of an array element at the start of the array (is only necessary if the driver is used for connecting a zenon Logic application without CT segment).
Alignment	Not used
Bit number	Not used
String length	<p>Only available for String variables: Maximum number of characters that the variable can take.</p> <p>Note: If strings with a length of more than 245 characters are used, the <code>Max. write request length</code> (on page 14) must be set to 1024 instead of 512.</p>
Driver connection/Driver object type	At the creation of the variables an object type is selected depended on the used driver. The object type can be changed here.
Driver connection/Data type	<p>Data type of the variable. Is selected during the creation of the variable; the type can be changed here.</p> <p>Attention: If you change the data type later, all other properties of the variable must be checked and adjusted, if necessary.</p>
Priority	<p>Allocation of the priority for updates to variables:</p> <ul style="list-style-type: none"> ‣ Increased: Polling with normal priority ‣ High: Polling with high priority ‣ Highest: Polling with highest priority ‣ Normal: Spontaneous reading via events

	<p>Default: Normal</p> <p>Attention: Spontaneous reading is only possible at active event connection (Driver configuration (on page 14)) and at a zenon Logic Runtime with Event server. Spontaneous reading of strings is not supported by all zenon Logic implementations. If spontaneous reading is not possible, the variable is polled.</p>
--	---

ARRAYS

Arrays are allowed; you can create them in zenon Logic. Take care that in zenon option **Array Start index** is **0** is set for the variable.

6.3 Driver objects and datatypes

Driver objects are areas available in the PLC, such as markers, data blocks etc. Here you can find out which driver objects are provided by the driver and which IEC data types can be assigned to the respective driver objects.

6.3.1 Driver objects

The following object types are available in this driver:

Driver object type	Channel type	Read / Write	Supported data types	Description
PLC marker	8	R / W	BOOL, SINT, USINT, INT, UINT, DINT, UDINT, LINT, REAL, LREAL, STRING	zenon Logic variable
Driver variable	35	R / W	BOOL, SINT, USINT, INT, UINT, DINT, UDINT, REAL, STRING	Variables for the statistical analysis of communication. Find out more in the chapter about the Driver variables (on page 34)

6.3.2 Mapping of the data types

All variables in zenon are derived from IEC data types. The following table compares the IEC datatypes with the datatypes of the PLC.

Control	zenon	Data type
BOOL	BOOL	8
USINT	USINT	9
SINT	SINT	10
UINT	UINT	2
INT	INT	1
UDINT	UDINT	4
DINT	DINT	3
ULINT	ULINT	27
LINT	LINT	26
REAL	REAL	5
LREAL	LREAL	6
STRING	STRING	12
-	WSTRING	21
-	DATE	18
TIME	TIME	17
-	DATE_AND_TIME	20
-	TOD (Time of Day)	19

Data type: The property **Data type** is the internal numerical name of the data type. It is also used for the extended DBF import/export of the variables.



Attention

In contrast to zenon Logic, the complete value range of a LINT/ULINT is not available in zenon. Note this when configuring the project.

The limits of the value range in zenon are:

ULINT: 0 to 4.503.599.627.370.495

LINT: -2,251,799,813,685,248 to 2,251,799,813,685,247

**Attention**

Variables of data type LINT/ULINT are only available to a limited extent under Windows CE, because there is not 64-bit integer in the Windows CE variant.

6.4 Creating variables by importing

Variables can also be imported by importing them. The XML and DBF import is available for every driver.

**Information**

You can find details on the import and export of variables in the Import-Export (main.chm::/13028.htm) manual in the Variables (main.chm::/13045.htm) section.

6.4.1 XML import

For the import/export of variables the following is true:

- ▶ The import/export must not be started from the global project.
- ▶ The start takes place via:
 - Context menu of variables or data type in the project tree
 - or context menu of a variable or a data type
 - or symbol in the symbol bar variables

**Attention**

When importing/overwriting an existing data type, all variables based on the existing data type are changed.

Example:

There is a data type XYZ derived from the type INT with variables based on this data type. The XML file to be imported also contains a data type with the name XYZ but derived from type STRING. If this data type is imported, the existing data type is overwritten and the type of all variables based on it is adjusted. I.e. the variables are now no longer INT variables, but STRING variables.

6.4.2 DBF Import/Export

Data can be exported to and imported from dBase.



Information

Import and Export via CSV or dBase supported; no driver specific variable settings, such as formulas. Use export/import via XML for this.

IMPORT DBF FILE

To start the import:

1. right-click on the variable list
2. in the drop-down list of **Extended export/import...** select the **Import dBase** command
3. follow the import assistant

The format of the file is described in the chapter File structure.



Information

Note:

- ▶ Driver object type and data type must be amended to the target driver in the DBF file in order for variables to be imported.
- ▶ dBase does not support structures or arrays (complex variables) at import.

EXPORT DBF FILE

To start the export:

1. right-click on the variable list
2. in the drop-down list of **Extended export/import...** select the **Export dBase...** command
3. follow the export assistant

**Attention**

DBF files:

- ▶ must correspond to the 8.3 DOS format for filenames (8 alphanumeric characters for name, 3 character suffix, no spaces)
- ▶ must not have dots (.) in the path name.
e.g. the path `C:\users\John.Smith\test.dbf` is invalid.
Valid: `C:\users\JohnSmith\test.dbf`
- ▶ must be stored close to the root directory in order to fulfill the limit for file name length including path: maximum 255 characters

The format of the file is described in the chapter File structure.

**Information**

dBase does not support structures or arrays (complex variables) at export.

File structure of the dBase export file

The dBaseIV file must have the following structure and contents for variable import and export:



Attention

dBase does not support structures or arrays (complex variables) at export.

DBF files must:

- ▶ conform with their name to the 8.3 DOS format (8 alphanumeric characters for name, 3 characters for extension, no space)
- ▶ Be stored close to the root directory (Root)

STRUCTURE

Description	Type	Field size	Comment
KANALNAME	Char	128	Variable name. The length can be limited using the MAX_LAENGE entry in project.ini .
KANAL_R	C	128	The original name of a variable that is to be replaced by the new name entered under "VARIABLENNAME" (field/column must be entered manually). The length can be limited using the MAX_LAENGE entry in project.ini .
KANAL_D	Log	1	The variable is deleted with the 1 entry (field/column has to be created by hand).
TAGNR	C	128	Identification. The length can be limited using the MAX_LAENGE entry in project.ini .
EINHEIT	C	11	Technical unit
DATENART	C	3	Data type (e.g. bit, byte, word, ...) corresponds to the data type.
KANALTYP	C	3	Memory area in the PLC (e.g. marker area, data area, ...) corresponds to the driver object type.
HWKANAL	Num	3	Bus address
BAUSTEIN	N	3	Datablock address (only for variables from the data area of the PLC)
ADDRESS	N	5	Offset
BITADR	N	2	For bit variables: bit address For byte variables: 0=lower, 8=higher byte For string variables: Length of string (max. 63 characters)
ARRAYSIZE	N	16	Number of variables in the array for index variables ATTENTION: Only the first variable is fully available. All others are only available for VBA or the Recipe Group Manager
LES_SCHR	R	1	Write-Read-Authorization

			0: Not allowed to set value. 1: Allowed to set value.
MIT_ZEIT	R	1	time stamp in zenon zenon (only if supported by the driver)
OBJEKT	N	2	Driver-specific ID number of the primitive object comprises TREIBER-OBJEKTYP and DATENTYP
SIGMIN	Float	16	Non-linearized signal - minimum (signal resolution)
SIGMAX	F	16	Non-linearized signal - maximum (signal resolution)
ANZMIN	F	16	Technical value - minimum (measuring range)
ANZMAX	F	16	Technical value - maximum (measuring range)
ANZKOMMA	N	1	Number of decimal places for the display of the values (measuring range)
UPDATERATE	F	19	Update rate for mathematics variables (in sec, one decimal possible) not used for all other variables
MEMTIEFE	N	7	Only for compatibility reasons
HDRATE	F	19	HD update rate for historical values (in sec, one decimal possible)
HDTIEFE	N	7	HD entry depth for historical values (number)
NACHSORT	R	1	HD data as postsorted values
DRRATE	F	19	Updating to the output (for zenon DDE server, in [s], one decimal possible)
HYST_PLUS	F	16	Positive hysteresis, from measuring range
HYST_MINUS	F	16	Negative hysteresis, from measuring range
PRIOR	N	16	Priority of the variable
REAMATRIZE	C	32	Allocated reaction matrix
ERSATZWERT	F	16	Substitute value, from measuring range
SOLLMIN	F	16	Minimum for set value actions, from measuring range
SOLLMAX	F	16	Maximum for set value actions, from measuring range
VOMSTANDBY	R	1	Get value from standby server; the value of the variable is not requested from the server but from the Standby Server in redundant networks
RESOURCE	C	128	Resources label. Free string for export and display in lists. The length can be limited using the MAX_LAENGE entry in project.ini .
ADJWVBA	R	1	Non-linear value adaption: 0: Non-linear value adaption is used 1: Non-linear value adaption is not used

ADJZENON	C	128	Linked VBA macro for reading the variable value for non-linear value adjustment.
ADJWVBA	C	128	ed VBA macro for writing the variable value for non-linear value adjustment.
ZWREMA	N	16	Linked counter REMA.
MAXGRAD	N	16	Gradient overflow for counter REMA.



Attention

When importing, the driver object type and data type must be amended to the target driver in the DBF file in order for variables to be imported.

LIMIT DEFINITION

Limit definition for limit values 1 to 4, and status 1 bis 4:

Description	Type	Field size	Comment
AKTIV1	R	1	Limit value active (per limit value available)
GRENZWERT1	F	20	technical value or ID number of a linked variable for a dynamic limit (see VARIABLEx) (if VARIABLEx is 1 and here it is -1, the existing variable linkage is not overwritten)
SCHWWERT1	F	16	Threshold value for limit
HYSTERESE1	F	14	Is not used
BLINKEN1	R	1	Set blink attribute
BTB1	R	1	Logging in CEL
ALARM1	R	1	Alarm
DRUCKEN1	R	1	Printer output (for CEL or Alarm)
QUITTTIER1	R	1	Must be acknowledged
LOESCHE1	R	1	Must be deleted
VARIABLE1	R	1	Dyn. limit value linking the limit is defined by an absolute value (see field GRENZWERTx).
FUNC1	R	1	Functions linking
ASK_FUNC1	R	1	Execution via Alarm Message List
FUNC_NR1	N	10	ID number of the linked function (if "-1" is entered here, the existing function is not overwritten during import)
A_GRUPPE1	N	10	Alarm/event group
A_KLASSE1	N	10	Alarm/event class
MIN_MAX1	C	3	Minimum, Maximum
FARBE1	N	10	Color as Windows coding
GRENZTXT1	C	66	Limit text
A_DELAY1	N	10	Time delay
INVISIBLE1	R	1	Invisible

EXPRESSIONS IN THE COLUMN "COMMENT" REFER TO THE EXPRESSIONS USED IN THE DIALOG BOXES FOR THE DEFINITION OF VARIABLES. FOR MORE INFORMATION, SEE CHAPTER VARIABLE DEFINITION.

6.4.3 Online import

Via the online import, you can import the variables created in a zenon Logic application to a project:

1. select the driver in the zenon project tree
2. select **Import variables from driver...** from the context menu
3. follow the instructions of the import assistant

IMPORT OF "UNSIGNED DATATYPES"

During online import, "Unsigned Datatypes" is imported as "Signed Datatypes" by default.



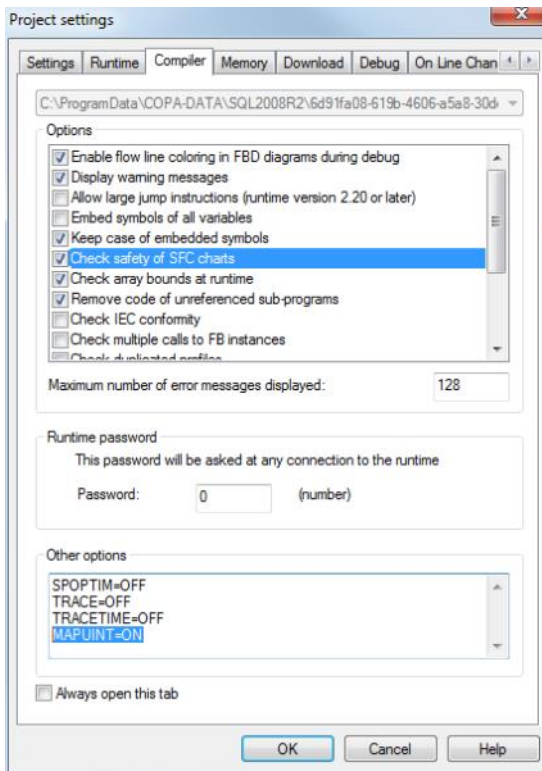
Attention

The import of "Unsigned Datatypes" as "Signed Datatypes" can have unwanted effects in Runtime. For example: Large numbers in zenon Logic are converted to negative numbers in zenon etc.

To avoid unwanted effects, add the parameter `MAPUINT=ON` in the zenon Logic project for the compiler. To do this:

1. Open the zenon Logic project in the Workbench.
2. Click on **Communication parameters** in the **Tools** menu
3. Select the **Compiler** tab
4. Enter the following in the **Further options** field:

MAPUINT=ON



5. Unsigned Datatypes is then imported correctly



Attention

When importing retain variables from a zenon Logic project, these are named as **/Global/** instead of **/Retain/**.

These retain variables must be manually renamed after the import.

6.5 Driver variables

The driver kit implements a number of driver variables. These are divided into:

- ▶ Information
- ▶ Configuration
- ▶ Statistics and
- ▶ Error message

The definitions of the variables defined in the driver kit are available in the import file `drvvar.dbf` (on the CD in the directory: `CD_Drive:/Predefined/Variables`) and can be imported from there.

Note: Variable names must be unique in zenon. If driver variables are to be imported from `drvvar.dbf` again, the variables that were imported beforehand must be renamed.



Information

Not every driver supports all driver variants.

For example:

- ▶ Variables for modem information are only supported by modem-compatible drivers
- ▶ Driver variables for the polling cycle only for pure polling drivers
- ▶ Connection-related information such as ErrorMessage only for drivers that only edit one connection at a time

INFORMATION

Name from import	Type	Offset	Description
MainVersion	UINT	0	Main version number of the driver.
SubVersion	UINT	1	Sub version number of the driver.
BuildVersion	UINT	29	Build version number of the driver.
RTMajor	UINT	49	zenon main version number
RTMinor	UINT	50	zenon sub version number
RTSp	UINT	51	zenon Service Pack number
RTBuild	UINT	52	zenon build number
LineStateIdle	BOOL	24.0	TRUE, if the modem connection is idle
LineStateOffering	BOOL	24.1	TRUE, if a call is received
LineStateAccepted	BOOL	24.2	The call is accepted
LineStateDialtone	BOOL	24.3	Dialtone recognized
LineStateDialing	BOOL	24.4	Dialing active
LineStateRingBack	BOOL	24.5	While establishing the connection
LineStateBusy	BOOL	24.6	Target station is busy

LineStateSpecialInfo	BOOL	24.7	Special status information received
LineStateConnected	BOOL	24.8	Connection established
LineStateProceeding	BOOL	24.9	Dialing completed
LineStateOnHold	BOOL	24.10	Connection in hold
LineStateConferenced	BOOL	24.11	Connection in conference mode.
LineStateOnHoldPendConf	BOOL	24.12	Connection in hold for conference
LineStateOnHoldPendTransfer	BOOL	24.13	Connection in hold for transfer
LineStateDisconnected	BOOL	24.14	Connection terminated.
LineStateUnknow	BOOL	24.15	Connection status unknown
ModemStatus	UDINT	24	Current modem status
TreiberStop	BOOL	28	Driver stopped For <code>driver stop</code> , the variable has the value <code>TRUE</code> and an OFF bit. After the driver has started, the variable has the value <code>FALSE</code> and no OFF bit.
SimulRTState	UDINT	60	Informs the status of Runtime for driver simulation.

CONFIGURATION

Name from import	Type	Offset	Description
ReconnectInRead	BOOL	27	If <code>TRUE</code> , the modem is automatically reconnected for reading
ApplyCom	BOOL	36	Apply changes in the settings of the serial interface. Writing to this variable immediately results in the method <code>SrvDrvVarApplyCom</code> being called (which currently has no further function).
ApplyModem	BOOL	37	Apply changes in the settings of the modem. Writing this variable immediately calls the method <code>SrvDrvVarApplyModem</code> . This closes the current connection and opens a new one according to the settings PhoneNumberSet and ModemHwAdrSet .

PhoneNumberSet	STRING	38	Telephone number, that should be used
ModemHwAdrSet	DINT	39	Hardware address for the telephone number
GlobalUpdate	UDINT	3	Update time in milliseconds (ms).
BGlobalUpdaten	BOOL	4	TRUE, if update time is global
TreiberSimul	BOOL	5	TRUE, if driver in sin simulation mode
TreiberProzab	BOOL	6	TRUE, if the variables update list should be kept in the memory
ModemActive	BOOL	7	TRUE, if the modem is active for the driver
Device	STRING	8	Name of the serial interface or name of the modem
ComPort	UINT	9	Number of the serial interface.
Baud rate	UDINT	10	Baud rate of the serial interface.
Parity	SINT	11	Parity of the serial interface
ByteSize	USINT	14	Number of bits per character of the serial interface Value = 0 if the driver cannot establish any serial connection.
StopBit	USINT	13	Number of stop bits of the serial interface.
Autoconnect	BOOL	16	TRUE, if the modem connection should be established automatically for reading/writing
PhoneNumber	STRING	17	Current telephone number
ModemHwAdr	DINT	21	Hardware address of current telephone number
RxIdleTime	UINT	18	Modem is disconnected, if no data transfer occurs for this time in seconds (s)

WriteTimeout	UDINT	19	Maximum write duration for a modem connection in milliseconds (ms).
RingCountSet	UDINT	20	Number of ringing tones before a call is accepted
ReCallIdleTime	UINT	53	Waiting time between calls in seconds (s).
ConnectTimeout	UINT	54	Time in seconds (s) to establish a connection.

STATISTICS

Name from import	Type	Offset	Description
MaxWriteTime	UDINT	31	The longest time in milliseconds (ms) that is required for writing.
MinWriteTime	UDINT	32	The shortest time in milliseconds (ms) that is required for writing.
MaxBlkReadTime	UDINT	40	Longest time in milliseconds (ms) that is required to read a data block.
MinBlkReadTime	UDINT	41	Shortest time in milliseconds (ms) that is required to read a data block.
WriteErrorCount	UDINT	33	Number of writing errors
ReadSucceedCount	UDINT	35	Number of successful reading attempts

MaxCycleTime	UDINT	22	Longest time in milliseconds (ms) required to read all requested data.
MinCycleTime	UDINT	23	Shortest time in milliseconds (ms) required to read all requested data.
WriteCount	UDINT	26	Number of writing attempts
ReadErrorCount	UDINT	34	Number of reading errors
MaxUpdateTimeNormal	UDINT	56	Time since the last update of the priority group Normal in milliseconds (ms).
MaxUpdateTimeHigher	UDINT	57	Time since the last update of the priority group Higher in milliseconds (ms).
MaxUpdateTimeHigh	UDINT	58	Time since the last update of the priority group High in milliseconds (ms).
MaxUpdateTimeHighest	UDINT	59	Time since the last update of the priority group Highest in milliseconds (ms).
PokeFinish	BOOL	55	Goes to 1 for a query, if all current pokes were executed

ERROR MESSAGE

Name from import	Type	Offset	Description
ErrorTimeDW	UDINT	2	Time (in seconds since 1.1.1970), when the last error occurred.
ErrorTimeS	STRING	2	Time (in seconds since 1.1.1970), when the last error occurred.
RdErrPrimObj	UDINT	42	Number of the PrimObject, when the last reading error occurred.
RdErrStationsName	STRING	43	Name of the station, when the last reading error occurred.
RdErrBlockCount	UINT	44	Number of blocks to read when the last reading error occurred.

RdErrHwAdresse	DINT	45	Hardware address when the last reading error occurred.
RdErrDatablockNo	UDINT	46	Block number when the last reading error occurred.
RdErrMarkerNo	UDINT	47	Marker number when the last reading error occurred.
RdErrSize	UDINT	48	Block size when the last reading error occurred.
DrvError	USINT	25	Error message as number
DrvErrorMsg	STRING	30	Error message as text
ErrorFile	STRING	15	Name of error log file

7. Driver-specific functions

The driver supports the following functions:

RDA FUNCTIONALITY

The zenon Logic driver supports the RDA functionality. The RDA archiving requires a linear memory area in the PLC, which is realized with an array in zenon Logic. This array must contain the appropriate RDA header + archive data. In the zenon Logic, only the Index [0] of this array may be activated and marked as an RDA variable. If the array Index [0] is set to 1, the corresponding values are read out from zenon Logic.

More information about the RDA archiving can be found in the online help of zenon Logic in the chapter Archiving.

BLOCKWRITE

Variables can be written in blocks without changing the write sequence of the variables. Block write is therefore always active and can be explicitly turned on or off.

LIMITATIONS

ARRAYS

Arrays are allowed; you can create them in zenon Logic. Please note the different handling of indices, depending on the array start of the zenon variables. This option must be selected in the dialog when a variable is created in zenon Logic.

Elements can be changed with **Array Start 0**:

	Index, e. g.:	Alloc.					
zenon	[1...10]	1	2	3	4	...	10
zenon Logic	[0...9]	0	1	2	3	...	9

For the correct assignment of the elements, the following should be the case:

1. The **array start** in zenon should be set to 0
2. in zenon Logic, the **Store complex variables in separate segment** must be active

Description:

If the **Store complex variables in separate segment** in zenon Logic is,

- ▶ active, then the variables are assigned in the driver using the variable names only. This means:
 - The variables must have the same name.
 - Arrays must start with 0 in zenon, otherwise the elements are switched.
- ▶ not active, then zenon array variables with start index 1 can be communicated correctly. Because:
 - The name of the basic variable is used for array variables.
 - The zenon offset setting is used for the index.

Attention: That does not work for array structures however, because only one index per variable can be saved in the offset.

This means: There are no restrictions if the **array start** in zenon is set to 0



Attention

*If the **Store complex variables in separate segment** option is switched off, no arrays of structures or arrays in structures are supported. The index of an array element is then read from the offset setting of the variable.*

To do this, the following settings must have been set up:

- ▶ The offset must be calculated automatically
- ▶ Each datatype starts at a new offset (datatypes are not packed)

STRUCTURES

Structures are allowed. We recommend to create structure data types only in zenon Logic, even if they are only used locally in the PLC.

VERSIONS

Due to performance issues, the zenon Logic Runtime Version 6.22 SP0 Build 2 needs the zenon Logic driver for the same or earlier zenon versions. Earlier zenon Logic Runtime versions still work with all zenon Logic drivers.

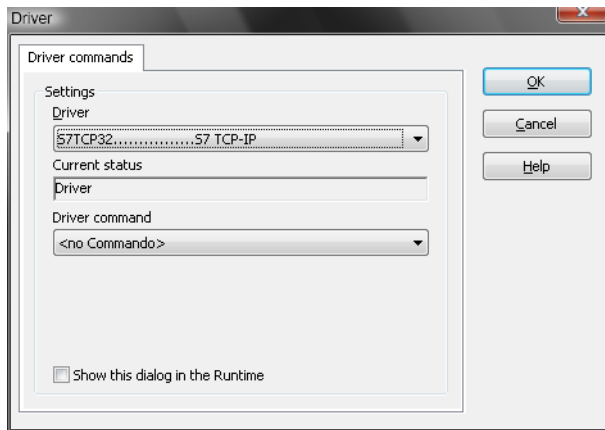
8. Driver commands

This chapter describes standard functions that are valid for most zenon drivers. Not all functions described here are available for every driver. For example, a driver that does not, according to the data sheet, support a modem connection also does not have any modem functions.

Driver commands are used to influence drivers using zenon; start and stop for example. The engineering is implemented with the help of function **Driver commands**. To do this:

- ▶ create a new function
- ▶ select *Variables -> Driver commands*

- The dialog for configuration is opened



Parameters	Description
Drivers	Drop-down list with all drivers which are loaded in the project.
Current state	Fixed entry which has no function in the current version.
Driver commands	Drop-down list for the selection of the command.
▶ Start driver (online mode)	Driver is reinitialized and started.
▶ Stop driver (offline mode)	Driver is stopped. No new data is accepted. Note: If the driver is in offline mode, all variables that were created for this driver receive the status <code>switched off (OFF; Bit 20)</code> .
▶ Driver in simulation mode	Driver is set into simulation mode. The values of all variables of the driver are simulated by the driver. No values from the connected hardware (e.g. PLC, bus system, ...) are displayed.
▶ Driver in hardware mode	Driver is set into hardware mode. For the variables of the driver the values from the connected hardware (e.g. PLC, bus system, ...) are displayed.
▶ Driver-specific command	Enter driver-specific commands. Opens input field in order to enter a command.
▶ Activate driver write set value	Write set value to a driver is allowed.
▶ Deactivate driver write set value	Write set value to a driver is prohibited.
▶ Establish connection with modem	Establish connection (for modem drivers) Opens the input fields for the hardware address and for the telephone number.
▶ Disconnect from modem	Terminate connection (for modem drivers)
Show this dialog in the Runtime	The dialog is shown in Runtime so that changes can be made.

DRIVER COMMANDS IN THE NETWORK

If the computer, on which the **driver command** function is executed, is part of the zenon network, additional actions are carried out. A special network command is sent from the computer to the project server, which then executes the desired action on its driver. In addition, the Server sends the same driver command to the project standby. The standby also carries out the action on its driver.

This makes sure that Server and Standby are synchronized. This only works if the Server and the Standby both have a working and independent connection to the hardware.

9. Error analysis

Should there be communication problems, this chapter will assist you in finding out the error.

9.1 Analysis tool

All zenon modules such as Editor, Runtime, drivers, etc. write messages to a joint log file. To display them correctly and clearly, use the Diagnosis Viewer (main.chm::/12464.htm) program that was also installed with zenon. You can find it under *Start/All programs/zenon/Tools 7.20 -> Diagviewer*.

zenon driver log all errors in the log files. The default folder for the log files is subfolder `LOG` in directory `ProgramData`, example:

`C:\ProgramData\COPA-DATA\LOG`. Log files are text files with a special structure.

Attention: With the default settings, a driver only logs error information. With the **Diagnosis Viewer** you can enhance the diagnosis level for most of the drivers to "Debug" and "Deep Debug". With this the driver also logs all other important tasks and events.

In the Diagnosis Viewer you can also:

- ▶ follow currently created entries live
- ▶ customize the logging settings
- ▶ change the folder in which the log files are saved

Note:

1. In Windows CE even errors are not logged per default due to performance reasons.
2. The Diagnosis Viewer displays all entries in UTC (coordinated world time) and not in local time.
3. The Diagnosis Viewer does not display all columns of a log file per default. To display more columns activate property **Add all columns with entry** in the context menu of the column header.
4. If you only use **Error logging**, the problem description is in column **Error text**. For other diagnosis level the description is in column **General text**.
5. For communication problems many drivers also log error numbers which the PLC assigns to them. They are displayed in **Error text** and/or **Error code** and/or **Driver error parameter (1 and 2)**. Hints on the meaning of error codes can be found in the driver documentation and the protocol/PLC description.
6. At the end of your test set back the diagnosis level from **Debug** Or **Deep Debug**. At **Debug** and **Deep Debug** there are a great deal of data for logging which are saved to the hard drive and which can influence your system performance. They are still logged even after you close the **Diagnosis Viewer**.

You can find further information on the Diagnosis Viewer in the Diagnose Viewer (main.chm::/12464.htm) chapter.

9.2 Check list

Checks after communication errors:

- ▶ Does the driver have the right communication parameters? (IP Address, Port)
- ▶ Does the target system support spontaneous data traffic? (Maybe deactivate Flag „Use event mode“)
- ▶ Was the log file analyzed with the help of the Diagnosis Viewer (on page 46)? (Which errors occurred)?
- ▶ For further error analysis, please send a project backup and the "error text file" (in the project path RT\\FILES\\zenon\\custom\\log) to the responsible Support department (only zenon 6.00 and zenon 6.01).