

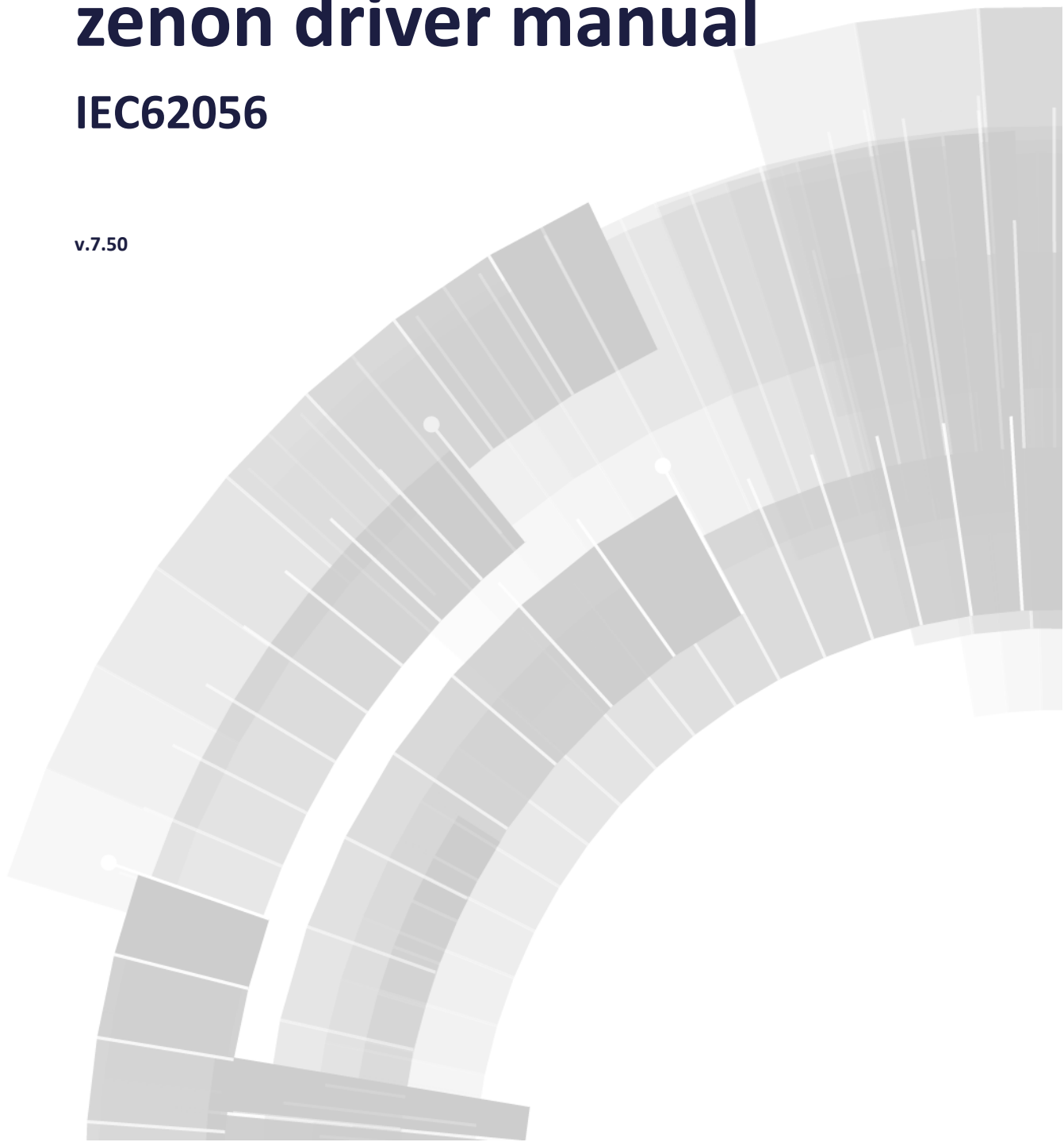


COPADATA
do it your way

zenon driver manual

IEC62056

v.7.50





©2016 Ing. Punzenberger COPA-DATA GmbH

All rights reserved.

Distribution and/or reproduction of this document or parts thereof in any form are permitted solely with the written permission of the company COPA-DATA. Technical data is only used for product description and are not guaranteed qualities in the legal sense. Subject to change, technical or otherwise.

Contents

1. Welcome to COPA-DATA help	4
2. IEC62056	4
3. IEC62056 - Data sheet	5
4. Driver history	6
5. Requirements.....	7
5.1 PC	7
5.2 PLC.....	7
6. Configuration	8
6.1 Creating a driver.....	8
6.2 Settings in the driver dialog	10
6.2.1 General	10
6.2.2 Com	13
6.2.3 Settings.....	14
6.3 Communication.....	17
7. Creating variables.....	17
7.1 Creating variables in the Editor.....	17
7.2 Addressing.....	21
7.3 Driver objects and datatypes	21
7.3.1 Driver objects	22
7.3.2 Mapping of the data types	22
8. Driver commands	23
9. Error analysis.....	26
9.1 Analysis tool	26
9.2 Check list	27

1. Welcome to COPA-DATA help

GENERAL HELP

If you cannot find any information you require in this help chapter or can think of anything that you would like added, please send an email to documentation@copadata.com (<mailto:documentation@copadata.com>).

PROJECT SUPPORT

You can receive support for any real project you may have from our Support Team, who you can contact via email at support@copadata.com (<mailto:support@copadata.com>).

LICENSES AND MODULES

If you find that you need other modules or licenses, our staff will be happy to help you. Email sales@copadata.com (<mailto:sales@copadata.com>).

2. IEC62056

The driver implements the protocol C of the IEC 62056-21 specification, but only for reading.

Only values with address information will be represented.

3. IEC62056 - Data sheet

General:	
Driver file name	IEC62056.exe
Driver name	IEC-62056-21 Driver
PLC types	IEC 62056-21 or IEC 61107 compatible enrgy meter
PLC manufacturer	Siemens; IEC;

Driver supports:	
Protocol	IEC 62056-21; IEC 61107;
Addressing: Address-based	--
Addressing: Name-based	X
Spontaneous communication	--
Polling communication	X
Online browsing	--
Offline browsing	--
Real-time capable	--
Blockwrite	--
Modem capable	--
Serial logging	--
RDA numerical	--
RDA String	--

Requirements:	
Hardware PC	Standard network card or RS232 serial interface
Software PC	--
Hardware PLC	--
Software PLC	--
Requires v-dll	X

Platforms:	
Operating systems	Windows 7, 8, 8.1, 10, Server 2008R2, Server 2012, Server 2012R2;
CE platforms	-;

4. Driver history

Date	Driver version	Change
20.08.08	200	Created driver documentation

DRIVER VERSIONING

The versioning of the drivers was changed with zenon 7.10. There is a cross-version build number as of this version. This is the number in the 4th position of the file version,
For example: **7.10.0.4228** means: The driver is for version **7.10** service pack **0**, and has the build number **4228**.

Expansions or error rectifications will be incorporated into a build in the future and are then available from the next consecutive build number.



Example

*A driver extension was implemented in build **4228**. The driver that you are using is build number **8322**. Because the build number of your driver is higher than the build number of the extension, the extension is included. The version number of the driver (the first three digits of the file version) do not have any significance in relation to this. The drivers are version-agnostic*

5. Requirements

This chapter contains information on the requirements that are necessary for use of this driver.

5.1 PC

- ▶ For communication via TCP/IP:
A standard network card in the PC is required for communication.
- ▶ For serial communication:
A serial interface at the PC is required. Alternatively, you can also use a COM port server or a USB/serial converter.

5.2 PLC

The counter can be used with:

- ▶ Optical interface:
Tested with RS232/TVS9 **Landis & Gyr FDC 1.3** converter.
- ▶ Serial interface module:
Tested with **MOXA UPort 1150** converter of RS232 (2 wires) to USB and a **Köhler AEL.TF.09** energy counter.
- ▶ Ethernet communication:
Tested with the **CU-E20 Ethernet** module by **Landis & Gyr**.

SETTINGS FOR SERIAL CONNECTION FOR MOXA UPORT 1150 AND KÖHLER AEL.TF.09

Settings for the COM connection in the zenon driver:

- ▶ **Com:** COM 2
- ▶ **Data bit:** 7
- ▶ **Stop bit:** 1
- ▶ **Baud rate:** 300
- ▶ **Parity:** Even
- ▶ **Protocol:** RTS/CTS

Settings in the zenon driver:

- ▶ **Delay before baud-rate switch:** 200 ms

Settings in the Moxa UPort 1150 converter:

- ▶ **Port:** 1
- ▶ **COM No.:** COM2
- ▶ **Fast Flush:** Disable
- ▶ **Interface:** RS-485 2W

6. Configuration

In this chapter you will learn how to use the driver in a project and which settings you can change.



Information

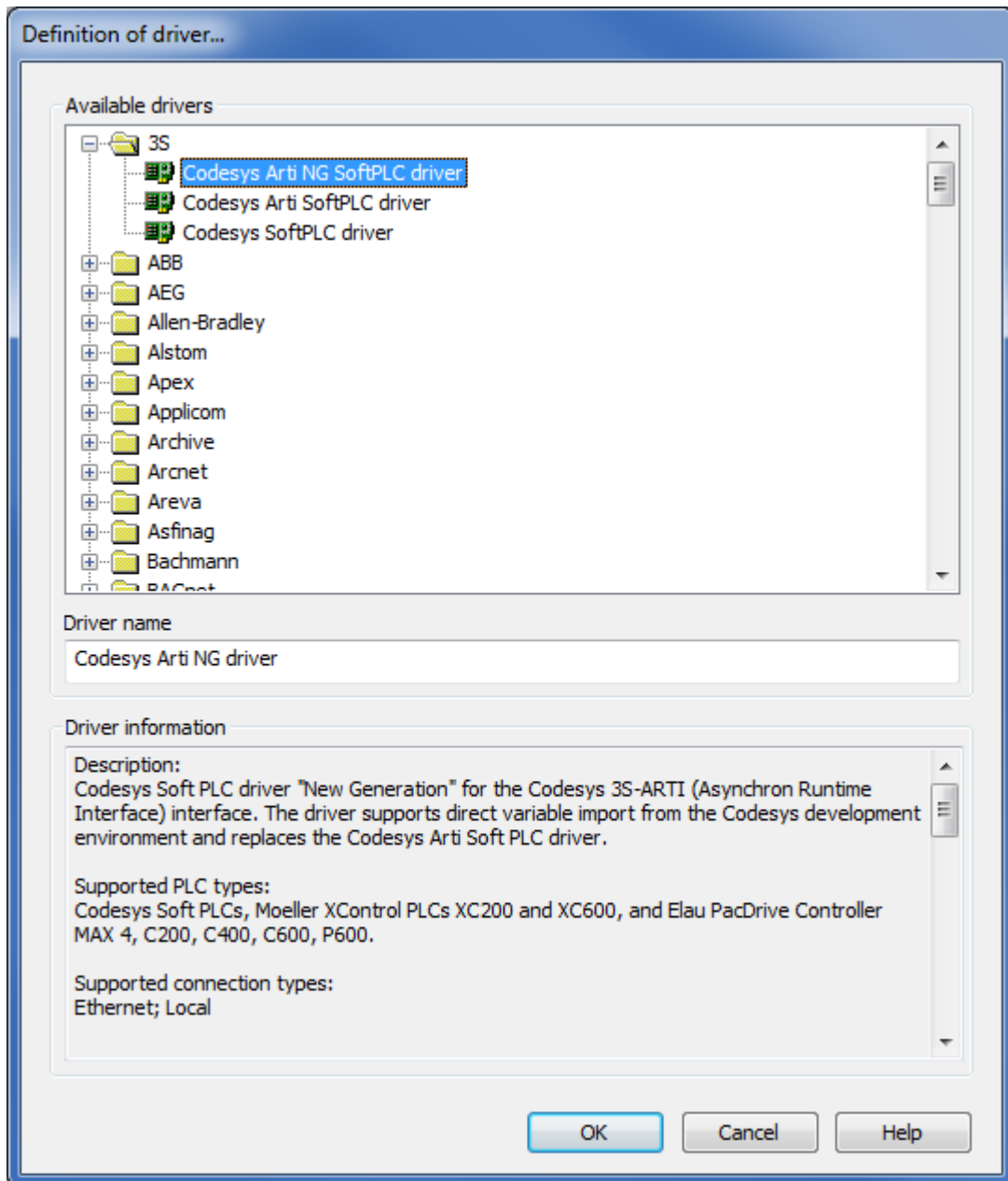
Find out more about further settings for zenon variables in the chapter Variables (main.chm::/15247.htm) of the online manual.

6.1 Creating a driver

In order to create a new driver:

1. Right-click on **Driver** in the Project Manage and select **Driver new** in the context menu.

2. In the following dialog the control system offers a list of all available drivers.



3. Select the desired driver and give it a name:
 - The driver name has to be unique, i.e. if one and the same driver is to be used several times in one project, a new name has to be given each time.
 - The driver name is part of the file name. Therefore it may only contain characters which are supported by the operating system. Invalid characters are replaced by an underscore (_).
 - Attention: This name cannot be changed later on.

4. Confirm the dialog with **OK**. In the following dialog the single configurations of the drivers are defined.

Only the respective required drivers need to be loaded for a project. Later loading of an additional driver is possible without problems.



Information

For new projects and for existing projects which are converted to version 6.21 or higher, the following drivers are created automatically:

- ▶ Internal
- ▶ MathDr32
- ▶ SysDrv.

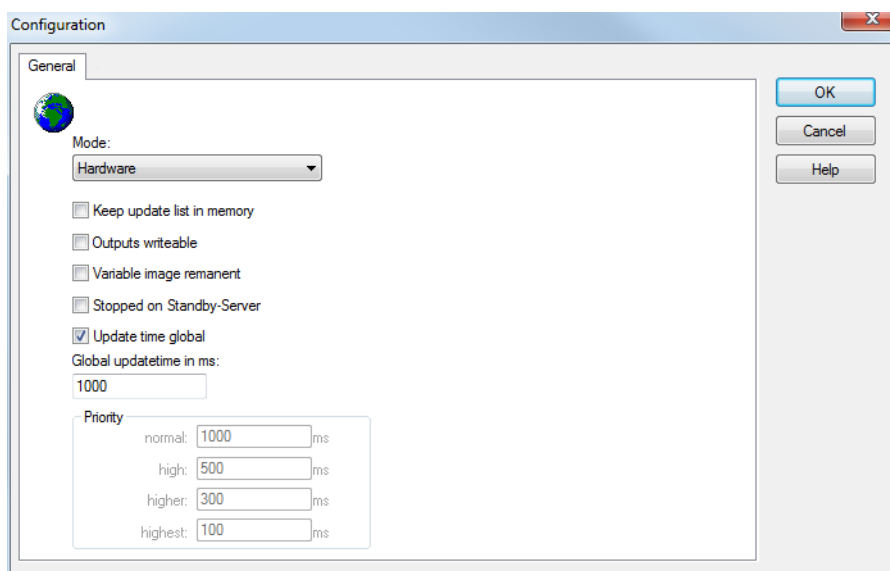
▶

6.2 Settings in the driver dialog

You can change the following settings of the driver:

6.2.1 General

The configuration dialog is opened when a driver is created. In order to be able to open the dialog later for editing, double click on the driver in the list or click on the **Configuration** property.



Parameters	Description
Mode	<p>Allows to switch between hardware mode and simulation mode</p> <ul style="list-style-type: none"> ▶ Hardware: <p>A connection to the control is established.</p> ▶ Simulation static <p>No communication between to the control is established, the values are simulated by the driver. In this modus the values remain constant or the variables keep the values which were set by zenon Logic. Each variable has its own memory area. E.g. two variables of the type marker with offset 79 can have different values in the Runtime and do not influence each other. Exception: The simulator driver.</p> ▶ Simulation - counting <p>No communication between to the control is established, the values are simulated by the driver. In this modus the driver increments the values within a value range automatically.</p> ▶ Simulation - programmed <p>N communication is established to the PLC. The values are calculated by a freely programmable simulation project. The simulation project is created with the help of the zenon Logic Workbench and runs in a zenon Logic Runtime which is integrated in the driver. For details see chapter Driver simulation (main.chm::/25206.htm).</p>
Keep update list in the memory	<p>Variables which were requested once are still requested from the control even if they are currently not needed. This has the advantage that e.g. multiple screen switches after the screen was opened for the first time are executed faster because the variables need not be requested again. The disadvantage is a higher load for the communication to the control.</p>
Output can be written	<p>Active: Outputs can be written.</p> <p>Inactive: Writing of outputs is prevented.</p> <p>Note: Not available for every driver.</p>
Variable image remanent	<p>This option saves and restores the current value, time stamp and the states of a data point.</p> <p>Fundamental requirement: The variable must have a valid value and time stamp.</p>

	<p>The variable image is saved in mode hardware if:</p> <ul style="list-style-type: none"> ▶ one of the states S_MERKER_1(0) up to S_MERKER8(7), REVISION(9), AUS(20) or ERSATZWERT(27) is active <p>The variable image is always saved if:</p> <ul style="list-style-type: none"> ▶ the variable is of the object type Driver variable ▶ the driver runs in simulation mode. (not programmed simulation) <p>The following states are not restored at the start of the Runtime:</p> <ul style="list-style-type: none"> ▶ SELECT(8) ▶ WR-ACK(40) ▶ WR-SUC(41) <p>The mode Simulation - programmed at the driver start is not a criterion in order to restore the remanent variable image.</p>
Stop on Standby Server	<p>Setting for redundancy at drivers which allow only on communication connection. For this the driver is stopped at the Standby Server and only started at the upgrade.</p> <p>Attention: If this option is active, the gapless archiving is no longer guaranteed.</p> <p>Active: Sets the driver at the not-process-leading Server automatically in a stop-like state. In contrast to stopping via driver command, the variable does not receive status switched off (statusverarbeitung.chm::/24150.htm) but an empty value. This prevents that at the upgrade to the Server irrelevant values are created in the AML, CEL and Historian.</p> <p>Note: Not available if the CE terminal serves as a data server. You can find further information in the zenon Operator manual in the CE terminal as a data server chapter.</p>
Global Update time	<p>Active: The set Global update time in ms is used for all variables in the project. The priority set at the variables is not used.</p> <p>Inactive: The set priorities are used for the individual variables.</p>
Priority	<p>The polling times for the individual priority classes are set here. All variables with the according priority are polled in the set time.</p> <p>The allocation to the variables takes place separately in the settings of the variable properties.</p> <p>The communication of the individual variables are graduated in respect of importance or necessary topicality using the priorities.</p>

	Thus the communication load is distributed better. Attention: Priority classes are not supported by each driver For example, drivers that communicate spontaneously do not support it.
--	---

CLOSE DIALOG

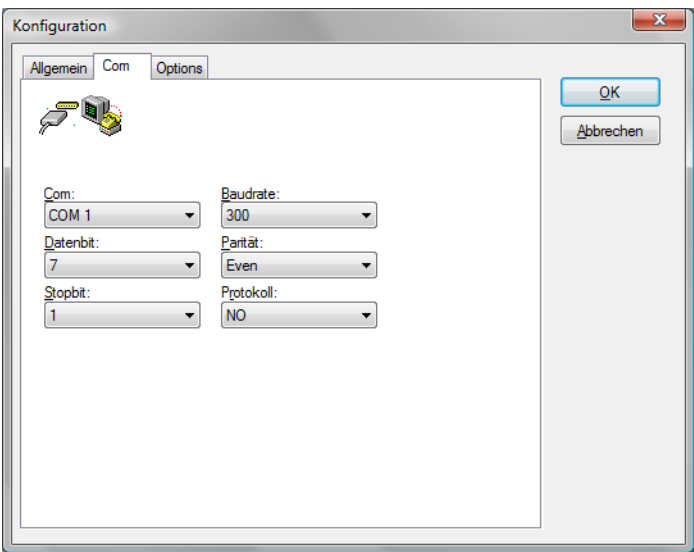
Parameters	Description
OK	Applies all changes in all tabs and closes the dialog.
Cancel	Discards all changes in all tabs and closes the dialog.
Help	Opens online help.

UPDATE TIME FOR CYCLICAL DRIVERS

The following applies for cyclical drivers:

For **Set value**, **Advising** of variables and **Requests**, a read cycle is immediately triggered for all drivers - regardless of the set update time. This ensures that the value is immediately available for visualization after writing. Update times can therefore be shorter than pre-set for cyclical drivers.

6.2.2 Com

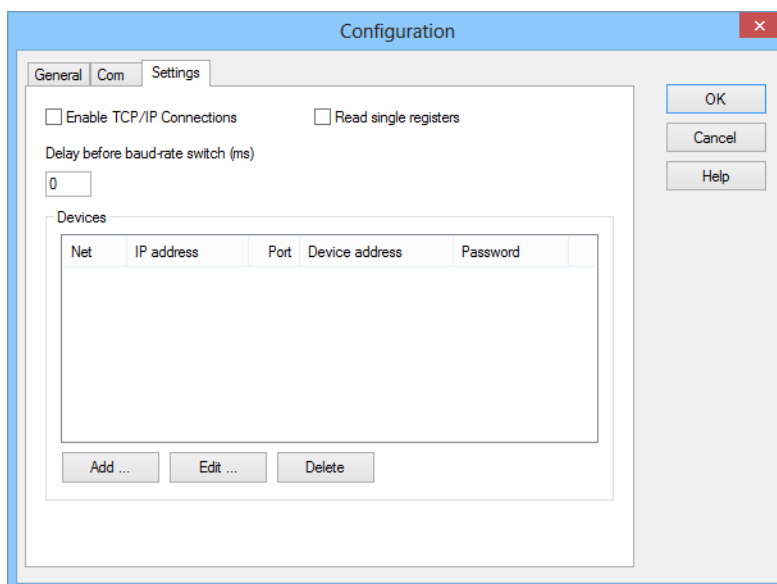


According to IEC62056, the following interface parameters are to be used:

Parameters	Value
Baud rate	300
Data bit	7
Stop bit	1
Parity	Even
Protocol	NO

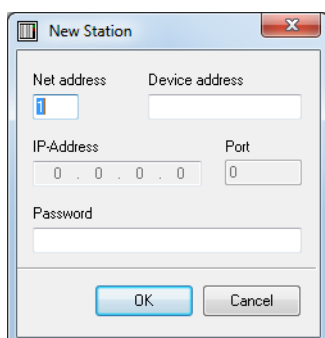
6.2.3 Settings

The driver support both serial communication and communication via TCP/IP. Only one of the two communication types can be used per device.



Parameters	Description
Enable TCP/IP Connections	Selected: The driver communicates via TCP/IP.
Read single registers	<p>Not selected: Driver reads the complete Table 1 from the counter.</p> <p>Selected: Driver switches to programming mode and reads each variable individually. The corresponding IEC 62056 address of the variable must be configured beforehand.</p> <p>Note: Not every counter supports the use of single registers. You can find information on this in the documentation of the Oracle client used.</p>
Delay before baud-rate switch (ms)	<p>Delay before switching the baud rate.</p> <p>Default: 0 ms</p> <p>Tested values:</p> <ul style="list-style-type: none"> ▶ EMH counter with Variomod XC converter: 0 ms ▶ Köhler AEL.TF.09 with MOXA UPort 1150 converter: 200 ms
Devices	List of configured stations.
Add	Opens the dialog for adding a station.
Edit	Opens the selected configuration for editing.
Delete	Deletes selected configuration.
OK	Accepts changes in all tabs and closes dialog.
Cancel	Discards changes and closes dialog.
Help	Opens online help.

ADDING A SERIAL STATION:

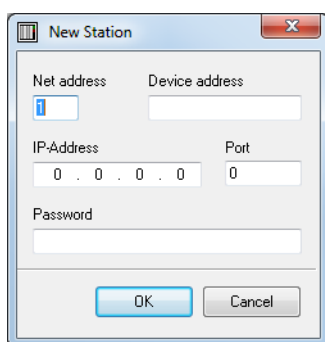


The 'New Station' dialog box is shown with the following fields and values:

- Net address:** A text field containing the letter 'I'.
- Device address:** An empty text field.
- IP-Address:** A text field containing '0 . 0 . 0 . 0'.
- Port:** A text field containing '0'.
- Password:** An empty text field.
- Buttons:** 'OK' and 'Cancel' buttons are located at the bottom.

Parameters	Description
Net address	You can choose any number for allocating variables to the station in the driver. The number must be unique for each driver. This number is to be given as the network address in the address settings of the variables. Range: 0–255
Device address	Hardware address of the device to be read from, in accordance with IEC 62056.
IP-Address	Not available for serial connection
Port	Not available for serial connection
Password	Input of a password, if required.
OK	Accepts configuration and closes this dialog.
Cancel	Cancels configuration and closes dialog.

ADDING A TCP/IP STATION:



Parameters	Description
Net address	You can choose any number for allocating variables to the station in the driver. The number must be unique for each driver. This number is to be given as the network address in the address settings of the variables. Range: 0–255)
Device address	Not available for TCP/IP connection.
IP address	IP address of the station.
IP port	IP port of the station. Default: 1000
OK	Accepts configuration and closes this dialog.
Cancel	Cancels configuration and closes dialog.

6.3 Communication

The driver communicates in mode Mode C, "programming mode". It can therefore address all data points in the counter. Any access password that may be necessary for this must be configured in the driver configuration for each counter.

The variable name can be configured via a driver specific property. If this property is empty, the variable identification is used as the variable name.

The time stamp can also be rounded up or down to the value of a start or end of an adjustable interval using two driver-specific properties.

To set the time via R2 command to C003, there is the **Clock Sync - BOOL** area. Writing to this variable sends the command to the counter. Variables in this area are write-only; they do not contain an actual value.

7. Creating variables

This is how you can create variables in the zenon Editor:

7.1 Creating variables in the Editor

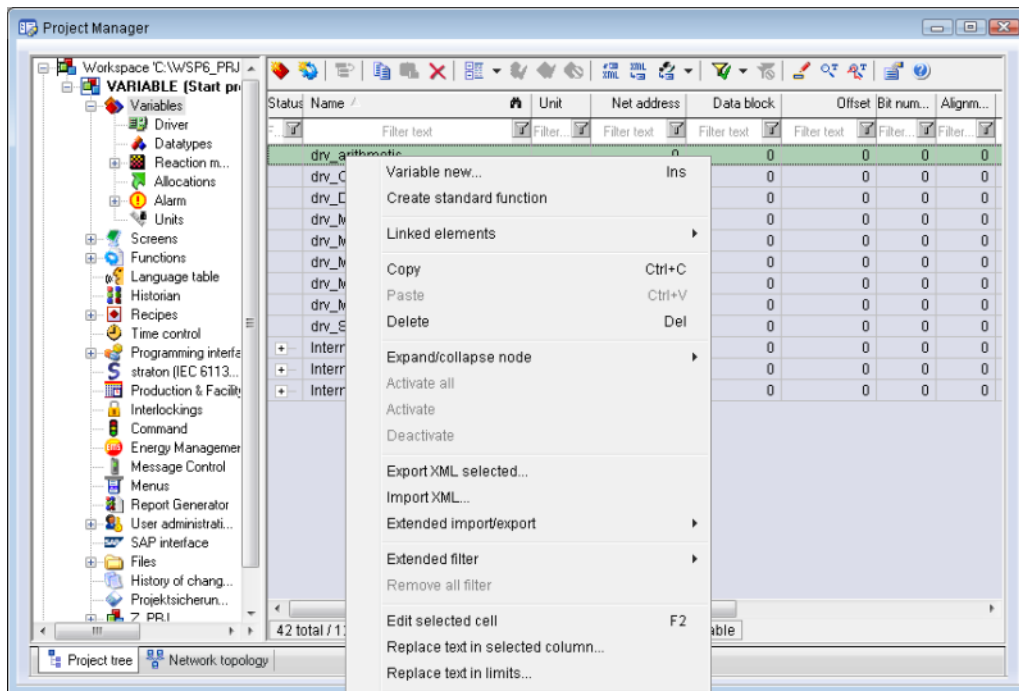
Variables can be created:

- ▶ as simple variables
- ▶ in arrays (main.chm::/15262.htm)
- ▶ as structure variables (main.chm::/15278.htm)

VARIABLE DIALOG

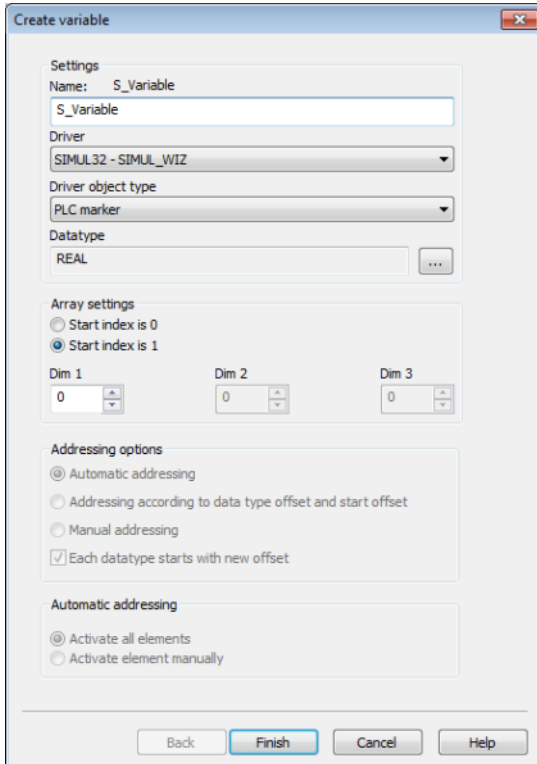
To create a new variable, regardless of which type:

1. Select the **New variable** command in the **Variables** node in the context menu



2. The dialog for configuring variables is opened
3. configure the variable

4. The settings that are possible depends on the type of variables



The screenshot shows the 'Create variable' dialog box with the following settings:

- Settings**
 - Name: S_Variable
 - Driver: SIMUL32 - SIMUL_WIZ
 - Driver object type: PLC marker
 - Datatype: REAL
- Array settings**
 - ☐ Start index is 0
 - ☒ Start index is 1
 - Dim 1: 0
 - Dim 2: 0
 - Dim 3: 0
- Addressing options**
 - ☒ Automatic addressing
 - ☐ Addressing according to data type offset and start offset
 - ☐ Manual addressing
 - ☒ Each datatype starts with new offset
- Automatic addressing**
 - ☒ Activate all elements
 - ☐ Activate element manually

Buttons at the bottom: Back, Finish, Cancel, Help.

Property	Description
Name	Distinct name of the variable. If a variable with the same name already exists in the project, no additional variable can be created with this name. Maximum length: 128 character Attention: The characters # and @ are not permitted in variable names. If non-permitted characters are used, creation of variables cannot be completed and the Finish button remains inactive. Note: For some drivers, the addressing is possible over the property Symbolic address , as well.
Drivers	Select the desired driver from the drop-down list. Note: If no driver has been opened in the project, the driver for internal variables (Intern.exe (Main.chm::/Intern.chm::/Intern.htm)) is automatically loaded.
Driver object type (cti.chm::/28685.htm)	Select the appropriate driver object type from the drop-down list.
Data type	Select the desired data type. Click on the ... button to open the selection dialog.
Array settings	Expanded settings for array variables. You can find details in the Arrays chapter.
Addressing options	Expanded settings for arrays and structure variables. You can find details in the respective section.
Automatic element activation	Expanded settings for arrays and structure variables. You can find details in the respective section.

SYMBOLIC ADDRESS

The **Symbolic address** property can be used for addressing as an alternative to the **Name** or **Identification** of the variables. Selection is made in the driver dialog; configuration is carried out in the variable property. When importing variables of supported drivers, the property is entered automatically.

Maximum length: 1024 characters.

INHERITANCE FROM DATA TYPE

Measuring range, **Signal range** and **Set value** are always:

- ▶ derived from the datatype
- ▶ Automatically adapted if the data type is changed

Note for signal range: If a change is made to a data type that does not support the set **signal range**, the **signal range** is amended automatically. For example, for a change from **INT** to **SINT**, the **signal range** is changed to 127. The amendment is also carried out if the **signal range** was not inherited from the data type. In this case, the **measuring range** must be adapted manually.

7.2 Addressing

Property	Description
Name	Any name may be chosen. ATTENTION: the name must be unique within every control system project.
Identification	The identification field is used for addressing. Example: 1.2.0
Net address	Bus address or net address of the variable. This address refers to the bus address in the connection configuration of the driver. This defines the station, on which the variable resides.
Data block	not used for this driver
Offset	not used for this driver
Alignment	not used for this driver
Bit number	not used for this driver
String length	Only available for String variables: Maximum number of characters that the variable can take.
Driver connection/Driver Object Type	Depending on the employed driver, an object type is selected during the creation of the variable; the type can be changed here later.
Driver connection/Data Type	Data type of the variable, which is selected during the creation of the variable; the type can be changed here later. Attention: If you change the data type later, all other properties of the variable must be checked and adjusted, if necessary.
Symbolic address	
IEC62056 Address	

7.3 Driver objects and datatypes

Driver objects are areas available in the PLC, such as markers, data blocks etc. Here you can find out which driver objects are provided by the driver and which IEC data types can be assigned to the respective driver objects.

7.3.1 Driver objects

The following object types are available in this driver:

Driver object type	Channel type	Read	Write	Supported data types	Description
Input	10	X	--	UDINT, DINT, LREAL, STRING, DATE_AND_TIME,	
Driver variable	35	X	X	BOOL, SINT, USINT, INT, UINT, DINT, UDINT, REAL, STRING	Variables for the statistical analysis of communication. Find out more in the chapter about the Driver variables

7.3.2 Mapping of the data types

All variables in zenon are derived from IEC data types. The following table compares the IEC datatypes with the datatypes of the PLC.

PLC	zenon	Data type
-	BOOL	8
-	USINT	9
-	SINT	10
-	UINT	2
-	INT	1
UDINT	UDINT	4
DINT	DINT	3
-	ULINT	27
-	LINT	26
-	REAL	5
LREAL	LREAL	6
STRING	STRING	12
-	WSTRING	21
-	DATE	18
-	TIME	17
DATE_AND_TIME	DATE_AND_TIME	20
-	TOD (Time of Day)	19

Data type: The property **Data type** is the internal numerical name of the data type. It is also used for the extended DBF import/export of the variables.

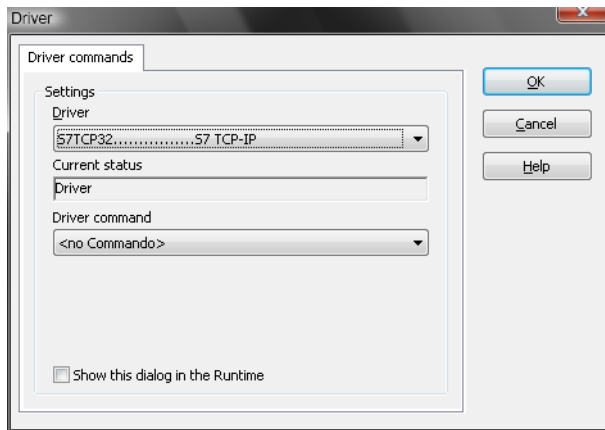
8. Driver commands

This chapter describes standard functions that are valid for most zenon drivers. Not all functions described here are available for every driver. For example, a driver that does not, according to the data sheet, support a modem connection also does not have any modem functions.

Driver commands are used to influence drivers using zenon; start and stop for example. The engineering is implemented with the help of function **Driver commands**. To do this:

- ▶ create a new function
- ▶ select Variables -> Driver commands

- The dialog for configuration is opened



Parameter	Description
Drivers	Drop-down list with all drivers which are loaded in the project.
Current status	Fixed entry which has no function in the current version.
Driver command	Drop-down list for the selection of the command.
▶ Start driver (online mode)	Driver is reinitialized and started.
▶ Stop driver (offline mode)	Driver is stopped. No new data is accepted. Note: If the driver is in offline mode, all variables that were created for this driver receive the status <code>switched off</code> (OFF; Bit 20).
▶ Driver in simulation mode	Driver is set into simulation mode. The values of all variables of the driver are simulated by the driver. No values from the connected hardware (e.g. PLC, bus system, ...) are displayed.
▶ Driver in hardware mode	Driver is set into hardware mode. For the variables of the driver the values from the connected hardware (e.g. PLC, bus system, ...) are displayed.
▶ Driver-specific command	Enter driver-specific commands. Opens input field in order to enter a command.
▶ Driver - activate set setpoint value	Write set value to a driver is allowed.
▶ Driver - deactivate set setpoint value	Write set value to a driver is prohibited.
▶ Establish connecton with modem	Establish connection (for modem drivers) Opens the input fields for the hardware address and for the telephone number.
▶ Disconnect from modem	Terminate connection (for modem drivers)
Show this dialog in the Runtime	The dialog is shown in Runtime so that changes can be made.

DRIVER COMMANDS IN THE NETWORK

If the computer, on which the **driver command** function is executed, is part of the zenon network, additional actions are carried out. A special network command is sent from the computer to the project server, which then executes the desired action on its driver. In addition, the Server sends the same driver command to the project standby. The standby also carries out the action on its driver.

This makes sure that Server and Standby are synchronized. This only works if the Server and the Standby both have a working and independent connection to the hardware.

9. Error analysis

Should there be communication problems, this chapter will assist you in finding out the error.

9.1 Analysis tool

All zenon modules such as Editor, Runtime, drivers, etc. write messages to a joint log file. To display them correctly and clearly, use the Diagnosis Viewer (main.chm::/12464.htm) program that was also installed with zenon. You can find it under Start/All programs/zenon/Tools 7.50 -> Diagviewer.

zenon driver log all errors in the LOG files. The default folder for the LOG files is subfolder **LOG** in directory `ProgramData`, example:

```
%ProgramData%\COPA-DATA\LOG. LOG files are text files with a special structure.
```

Attention: With the default settings, a driver only logs error information. With the **Diagnosis Viewer** you can enhance the diagnosis level for most of the drivers to "Debug" and "Deep Debug". With this the driver also logs all other important tasks and events.

In the Diagnosis Viewer you can also:

- ▶ Follow newly-created entries in real time
- ▶ customize the logging settings
- ▶ change the folder in which the LOG files are saved

Note:

1. The Diagnosis Viewer displays all entries in UTC (coordinated world time) and not in local time.
2. The Diagnosis Viewer does not display all columns of a LOG file per default. To display more columns activate property **Add all columns with entry** in the context menu of the column header.
3. If you only use **Error-Logging**, the problem description is in the column **Error text**. For other diagnosis level the description is in the column **General text**.
4. For communication problems many drivers also log error numbers which the PLC assigns to them. They are displayed in **Error text** or **Error code** or **Driver error parameter (1 and 2)**. Hints on the meaning of error codes can be found in the driver documentation and the protocol/PLC description.
5. At the end of your test set back the diagnosis level from **Debug** or **Deep Debug**. At **Debug** and **Deep Debug** there are a great deal of data for logging which are saved to the hard drive and which can influence your system performance. They are still logged even after you close the **Diagnosis Viewer**.



Attention

In Windows CE errors are not logged per default due to performance reasons.

You can find further information on the Diagnosis Viewer in the Diagnose Viewer (main.chm::/12464.htm) manual.

9.2 Check list

Is the station connected to the power supply?
Are the participants available in the TCP/IP network
Can the station be reached via the PING command?
Can the station be reached on the corresponding port via TELNET?
Are the station and the PLC connected with the right cable?
Was the right COM port selected?
Do the communication parameters match (Baud rate, parity, start/stop bits,...)
Is the COM port blocked by another application
Did you configure the net address correctly, both in the driver dialog and in the address properties of the variable
Is the correct object type used for the variable?
Does the addressing of the variable match the one in the station?
Use the DiagViewer for further analysis -> Which messages does it show