

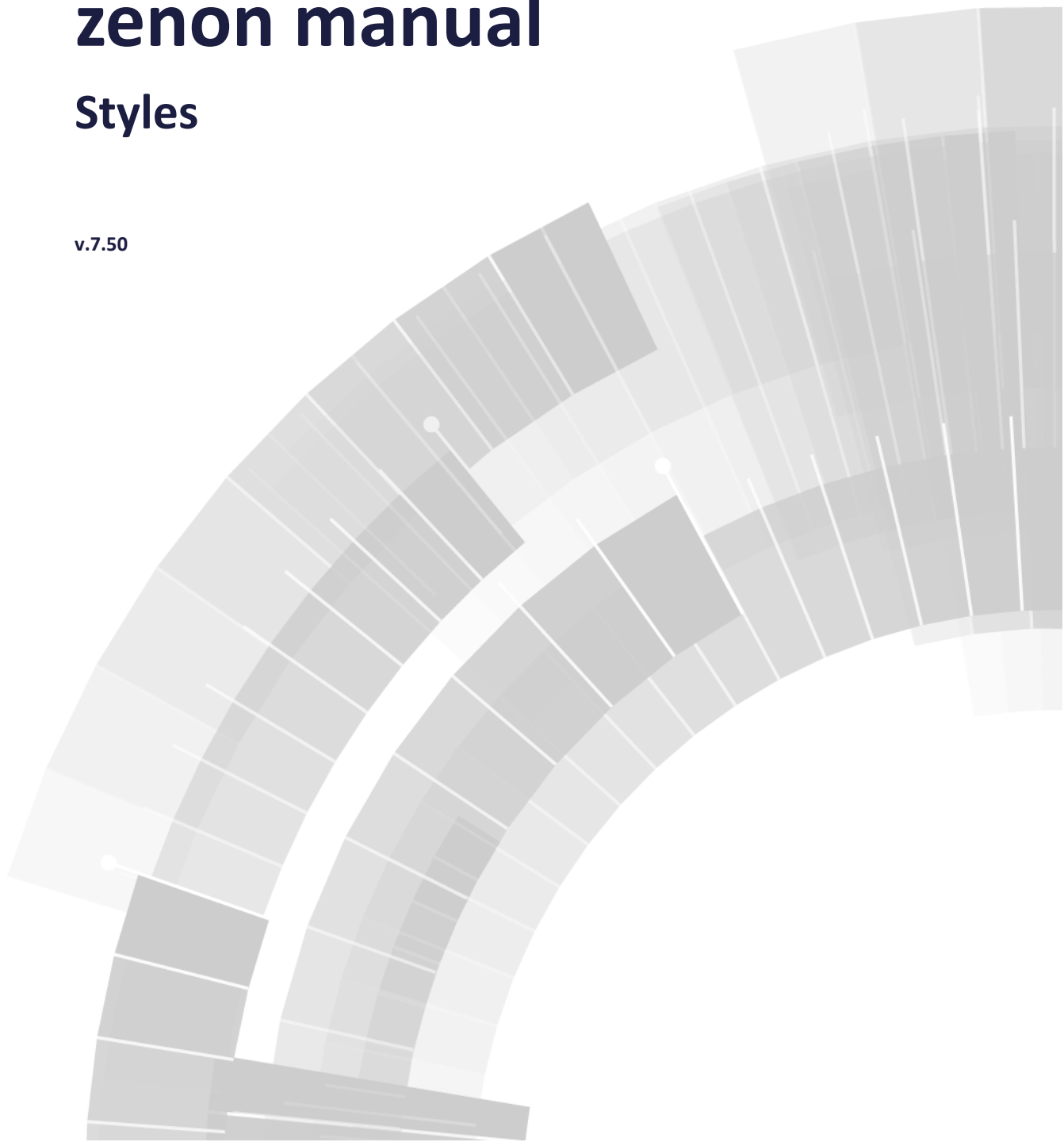


**COPADATA**  
do it your way

# zenon manual

## Styles

v.7.50





©2016 Ing. Punzenberger COPA-DATA GmbH

All rights reserved.

Distribution and/or reproduction of this document or parts thereof in any form are permitted solely with the written permission of the company COPA-DATA. Technical data is only used for product description and are not guaranteed qualities in the legal sense. Subject to change, technical or otherwise.

# Table of contents

<b>1. Welcome to COPA-DATA help .....</b>	<b>4</b>
<b>2. Styles .....</b>	<b>4</b>
<b>3. Style types.....</b>	<b>5</b>
3.1 Truncations .....	6
3.2 Filling .....	6
3.3 Glow .....	7
3.4 Line.....	8
3.5 Borders and shadows.....	8
3.6 Text .....	8
<b>4. Create styles.....</b>	<b>9</b>
<b>5. Administer styles .....</b>	<b>10</b>
5.1 Toolbar and context menu detail view .....	12
<b>6. Linking styles and style groups .....</b>	<b>13</b>
6.1 Context menu Elements .....	15
6.2 Replacing or deleting links .....	16
6.3 Limitations.....	16
<b>7. Style selection dialog .....</b>	<b>17</b>

# 1. Welcome to COPA-DATA help

## GENERAL HELP

If you cannot find any information you require in this help chapter or can think of anything that you would like added, please send an email to [documentation@copadata.com](mailto:documentation@copadata.com) (<mailto:documentation@copadata.com>).

## PROJECT SUPPORT

You can receive support for any real project you may have from our Support Team, who you can contact via email at [support@copadata.com](mailto:support@copadata.com) (<mailto:support@copadata.com>).

## LICENSES AND MODULES

If you find that you need other modules or licenses, our staff will be happy to help you. Email [sales@copadata.com](mailto:sales@copadata.com) (<mailto:sales@copadata.com>).

# 2. Styles

Styles make it possible to do the following with graphic properties of screen elements:

- ▶ Extract in frames of style groups
- ▶ Administer in style groups
- ▶ To assign them to other elements

Styles are always administered in the global object.



## License information

*Part of the standard license of the Editor and Runtime.*

## STYLE GROUPS

When extracting styles, all supported design properties of an element are extracted and saved in a style group.

## PROJECT MANAGER CONTEXT MENU

The **Styles** node in the project manager has a context menu. This contains the following commands:

- ▶ **Editor profile:** Allows the assignment of editor profiles.
- ▶ **Help:** Opens online help.

## 3. Style types

*You can create the following styles and link them to *Static elements* and *dynamic elements*. Not every property is available for every element:*

Property	Static elements	Dynamic elements
Truncations (on page 6)	<b>X</b>	Only <b>Button</b>
Filling (on page 6)	<b>X</b>	--
Glow (on page 7)	<b>X</b>	<b>X</b>
Line (on page 8)	<b>X</b> - except <b>static text</b>	--
Borders and shadows (on page 8)	<b>X</b>	<b>X</b>
Text (on page 8)	<b>X</b>	--

Key:

- ▶ **x**: available
- ▶ **--**: not available

## 3.1 Truncations

The `rounded` style type is available for all elements that support rounding.

The `rounded` style type covers the following properties:

- ▶ **Proportional**
- ▶ **All x [%]**
- ▶ **All y [%]**
- ▶ **Left/top x [%]**
- ▶ **Left/top y [%]**
- ▶ **Right/top x [%]**
- ▶ **Right/top y [%]**
- ▶ **Right/bottom x [%]**
- ▶ **Right/bottom y [%]**
- ▶ **Left/bottom x [%]**
- ▶ **Left/bottom y [%]**

## 3.2 Filling

The `fill` style type is available for all elements that support fill.

The `fill` style type covers the following properties:

- ▶ **Property group Fill:**
  - **Filling pattern**
  - **Fill color**
  - **Transparency of the fill color [%]**
  - **Gradient color**
  - **Transparency gradient color [%]**
- ▶ **Property group Color gradient**
  - **Color gradient**
  - **Offset [%]**
  - **Angle [°]**

## LIMITATIONS

For a project with the **Windows CE project** property activated or the `Windows basic` setting for the **Graphics quality** property, the following is applicable:

- ▶ Only corners, circles and segments of a circle and have a gradient color.
- ▶ The gradient color can only be defined using the properties for brightness values.
- ▶ The properties of the **Color gradient** group are deactivated for all elements.
- ▶ Transparencies are deactivated.

## COLOR SETTINGS

The following is applicable for color properties:

- ▶ Static colors: These are always saved in the style.
- ▶ Color palettes: Only color palettes from the global project can be used for styles.

Extracted styles always display the colors of the color palette of the global project. The linked color style can be overwritten by the settings of the local project if:

- ▶ The project has a different setting for **color palette in the Editor** as the global project
- ▶ The color palette of the global project is overwritten by the local project



### Hint

*When using styles, only use font lists and color palettes from the global project!*

## 3.3 Glow

The `glow` style type is available for all elements.

The `glow` style type covers the following properties:

- ▶ **Activate**
- ▶ **Transparency [%]**
- ▶ **Spread [pixel]**
- ▶ **Coloring**
- ▶ **Color**

## 3.4 Line

The `line` style type is available for all static elements that support lines.

Exception: **Static text**.

The `Line` style type covers the following properties:

- ▶ **Line width [Pixel]**
- ▶ **Line type**
- ▶ **Line color**
- ▶ **Transparency line color [%]**
- ▶ **Start type**
- ▶ **End type**
- ▶ **Size**

## 3.5 Borders and shadows

The `borders and shadows` style type is available for all elements.

It includes the following properties:

- ▶ **Border type**
- ▶ **Border/shadow color**
- ▶ **Transparency [%]**
- ▶ **Line width [Pixel]**
- ▶ **Blur**
- ▶ **Distance [pixels]**
- ▶ **Angle [°]**
- ▶ **Shadow size [%]**

## 3.6 Text

The `text` style type is available for the **static text** element.

It includes the following properties:

- ▶ **Representation group**
- ▶ **Subgroup Fill**
  - **Text color**



- ▶ Subgroup **Text format**
  - **Alignment horizontal**
  - **Alignment vertical**
  - **Automatic word wrap**

## FONTS

Only font types of the font list of the global project are used.

The linked text style can be overwritten by settings in the local project if:

- ▶ The project has a different setting for **Font list in the Editor** than the global project
- ▶ The font list of the global project is overwritten by the local project



### Hint

*When using styles, only use font lists and color palettes from the global project!*

## 4. Create styles

To create a style, extract it from an existing element. The option is not available if several elements are highlighted at the same time.

**Note:** In order for a style to be extracted, there must be a global project in the workspace. Styles are administered there.

### EXTRACT STYLES

To extract a style:

1. In the Editor, highlight the element whose style you want to extract.
2. Select the **Create style group from element** command from the context menu.

Supported properties of the element are extracted and created as a new style group in the global project in the **Styles** node.

The style group contains all supported properties as individual styles. Properties that are not available in the source object are created with the corresponding default values.

The properties that are supported depend on the Style type (on page 5) and original element.

Style groups and styles automatically get a name when created. Change this name as required in the properties of the styles.



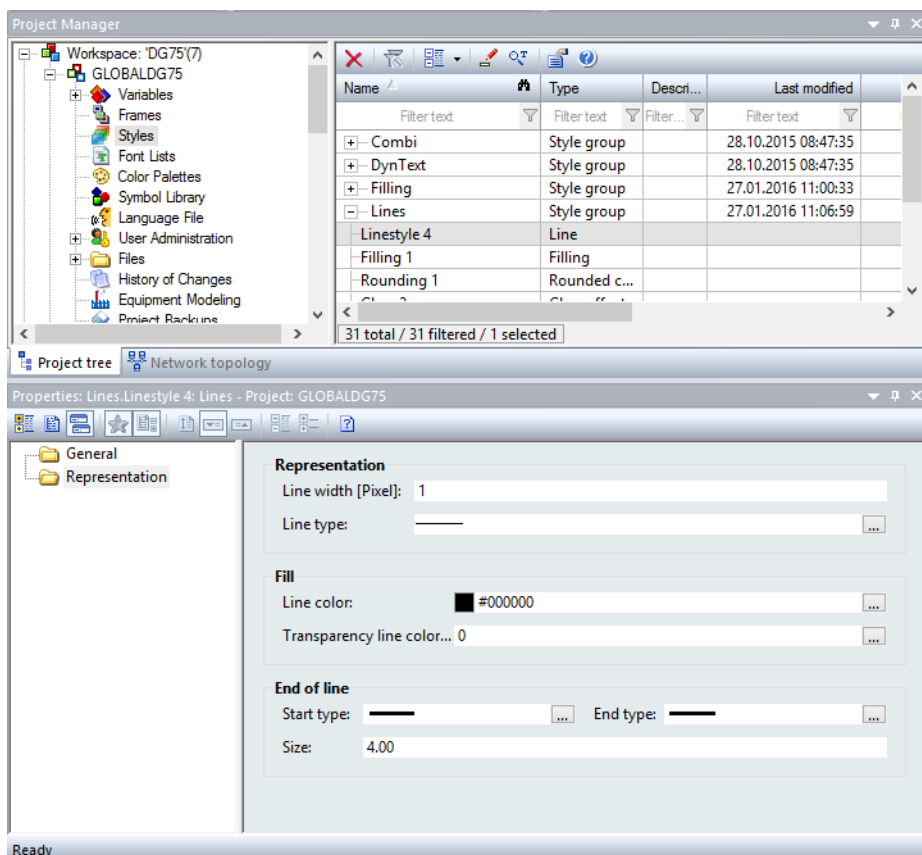
### Information

Names:

- ▶ Must be unique for style groups and styles within a style group,
- ▶ must not be empty
- ▶ must not consist of spaces only
- ▶ Must not contain one of the following characters: / \ . : \* ? < > | " ' # % @

## 5. Administer styles

You administer zenon styles in the **global project** in the **Styles** node.



All styles are displayed in the detail view of the styles. These contain the individual styles in a tree view. The elements can be sorted and filtered according to each column.

**Note:** The time shown in the **last changed** column does not relate to the change of the style but the time at which the file in which the style is contained was saved.

The properties of the highlighted style are shown in the properties window. These can be edited there.

## EDITING STYLES AND STYLE GROUPS

For each style, the corresponding properties can be edited in the properties window.

To edit a style or a style group:

1. Highlight the desired element.

Multiple selection is possible. With multiple selection, only properties that can be changed jointly for all highlighted elements are offered. Fields that are currently configured differently are emphasized with content in red font.

2. Configure the desired properties.

Changes are saved as soon as the field is left or after confirmation with the **Enter** key. Each change has an effect on all elements that are linked to this style.

### Properties for style groups and styles:

- ▶ **General group:**
  - **Name:** Name of the style or the style group
  - **Typ:** Type of the style. Display only.
  - **Beschreibung:** Individual description of the style or the style group.
- ▶ The corresponding property groups are offered depending on the style:
  - **Representation:**
  - **Effects**
  - **Fill**
  - **Rounded corners**



### Information

Names:

- ▶ Must be unique for style groups and styles within a style group,
- ▶ must not be empty
- ▶ must not consist of spaces only
- ▶ Must not contain one of the following characters: / \ . : \* ? < > | " ' # % @

## DELETING STYLE GROUPS OR STYLES

To delete a style or style group:

1. Highlight the desired elements.  
Multiple selection is possible.
2. Select the **Delete** command in the toolbar or context menu.

The selected elements are deleted after confirmation is requested. When style groups are deleted, all styles contained are also deleted.

**Note:** If styles are deleted, the previously-set values are restored for the properties with which they were linked. The property of the style shows `No style linked`.

## 5.1 Toolbar and context menu detail view

Symbols and a context menu are available for styles. The commands in the context menu correspond to the symbols.



Symbol/Command	Description
<b>Delete</b>	Deletes selected entries after a confirmation from list.
<b>Remove all filters</b>	Removes all filter settings.
<b>Expand all</b>	Allows all or selected nodes to be expanded or collapsed. Selection: <ul style="list-style-type: none"> <li>▶ <b>Expand all</b></li> <li>▶ <b>Collapse all</b></li> <li>▶ <b>Expand selected</b></li> <li>▶ <b>Reduce selected</b></li> </ul>
<b>Edit selected cell</b>	Opens the selected cell for editing. The binocular symbol in the header shows which cell has been selected in a highlighted line. Only cells that can be edited can be selected.
<b>Replace text in selected column</b>	Opens the dialog for searching and replacing texts.
<b>Properties</b>	Opens the <b>Properties</b> window for the selected entry.
<b>Help</b>	Opens online help.

## 6. Linking styles and style groups

Styles can be assigned **static elements** and **dynamic elements**. In doing so, the style is linked to the element. Changes to the style in the **Styles** module in the global project are transferred to all linked elements.

**Note:** Not all elements support all properties of a style. Only supported properties are ever assigned.

To assign an element a style or a style group, use:

- ▶ **Drag&Drop**
- ▶ The dialog in the corresponding property
- ▶ The context menu of the corresponding property

**Note:** Linked styles are shown in the respective property with the following syntax:

**StyleGroupName.StyleName.**

### LINK RULES

The following is applicable for the linking of styles or style groups:

- ▶ Only styles that correspond to the target property are linked.

- ▶ When linking style groups, only styles that are supported by the properties of the element are linked.

## DRAG&DROP

To link a style group or a style by means of Drag&Drop:

1. Highlight the element.
2. Navigate to the **styles** group in the selection dialog.
3. Select the desired style or style group.
4. Drag the style group or the style to the element in the main window with the mouse.

The properties of the style or the style group are applied to the screen element.

**Note:** If a style group is already linked, individual styles can only be linked if they do not concern properties of the style group. An individual style that is already defined by a style group can be dragged to an element using Drag&Drop. However it is only applied if it does not influence any style of the style group. It is however also possible to replace style groups with style groups and to replace individual styles with individual styles.

## DIALOG FOR PROPERTY

To link a style group or a style to an element using the **style selection** (on page 17) dialog:

1. Highlight the element.
2. Go to the desired properties group
3. Configure the desired style group or the style type (on page 5), such as **Line style**, **Fill style**, **Glow effect style** etc. for example..

If a style is already linked to the property, this is displayed.

If several elements with different styles have been selected, the style of the last-selected element is shown in red font. If the style is changed, it is applied to all selected elements.

4. Clicking on the ... button opens the dialog (on page 17) to select a style or a style group. A style that has already been linked can also be removed again in this dialog.

## CONTEXT MENU

1. Highlight the element.  
A style group must already be linked for the element.
2. Navigate to the desired group in the properties.
3. Right-click on the property
4. Select **Derive all properties from style group**:  
For this element, all properties that are available in the style group are linked.

## 6.1 Context menu Elements

Elements in zenon that can be linked to a style or a style group contain style-group-related commands in the context menu.

To link styles or style groups using the context menu or the linking:

1. Mark the desired element.
2. Right-click on the desired property.
3. Select the desired command from the context menu.

Available commands:

Command	Action	Remark
<b>Detach [style] from style group</b>	Detaches the linking of this property to a certain style of a style group. All other properties retain their linking.  The arrow symbol, which shows the linking, is removed.	The property is deleted from the style group. A different style can be linked to this property. If no other style is linked, the values configured in the original style group are used.  All other properties retain the linking to the original style group.
<b>Derive all properties from style group</b>	For this element, all properties that are available in the style group for this are linked.  An arrow symbol on the right next to the input field of the property shows that there is a linking.	All properties that are linked overwrite pre-existing values. If these are amended in the style group, they are also amended here.
<b>Detach all properties from style group</b>	All linkings that are derived from this style group are detached.  The arrow symbol that shows the linking is removed.	The configured values remain. If the values in the style group are amended, the change is not accepted for these elements.  All linked properties of this element are detached. The properties can be linked to another style group or to other styles.  If no other style is linked, the values configured in the original style group are used.

## 6.2 Replacing or deleting links

If a style group is linked to an element, individual properties for the element can be replaced with other values or deleted.

### REPLACE VALUES

You have several possibilities for replacing a value:

- ▶ Detach the style from the style group using the context menu of the property.  
Assign a new style to the property.
- ▶ Link a new individual style to the property by means of Drag&Drop.
- ▶ Select a different style for the property using the selection dialog (on page 17).

### REMOVING A STYLE OR STYLE GROUP

To remove a style or style group:

- ▶ Delete the style or the style group from the property.  
No style linked is displayed. The attendant properties contain the value that they had before linking again.

## 6.3 Limitations

Styles are administered in the global project and use settings of the global project. This can, depending on the settings of the local project, lead to the following limitations:

### FONTS

Only font types of the font list of the global project are used.

The linked text style can be overwritten by settings in the local project if:

- ▶ The project has a different setting for **Font list in the Editor** than the global project
- ▶ The font list of the global project is overwritten by the local project



## COLOR SETTINGS

The following is applicable for color properties:

- ▶ Static colors: These are always saved in the style.
- ▶ Color palettes: Only color palettes from the global project can be used for styles.

Extracted styles always display the colors of the color palette of the global project. The linked color style can be overwritten by the settings of the local project if:

- ▶ The project has a different setting for **color palette in the Editor** as the global project
- ▶ The color palette of the global project is overwritten by the local project



### Hint

*When using styles, only use font lists and color palettes from the global project!*

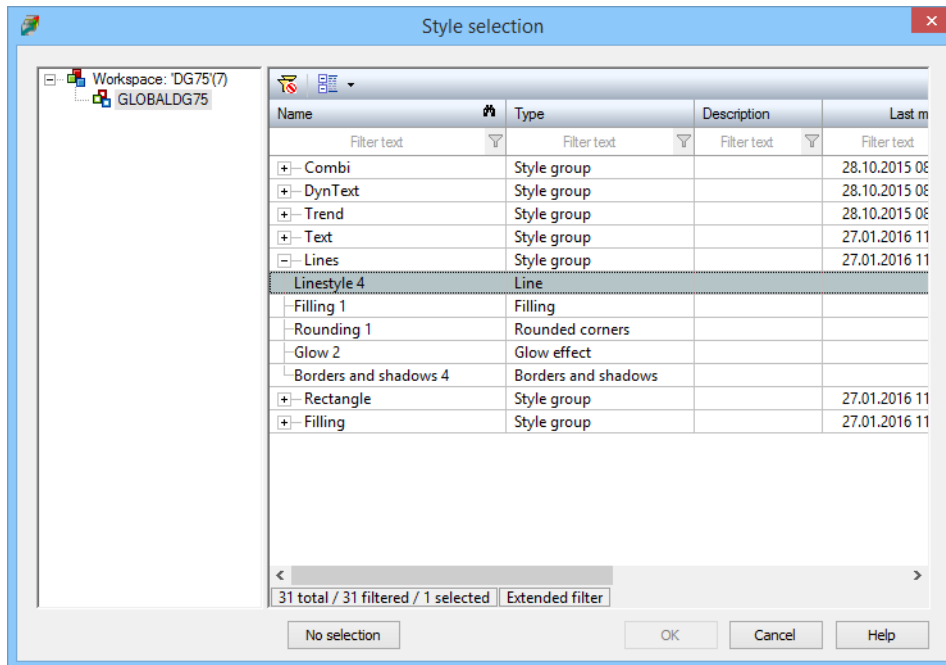
## 7. Style selection dialog

Clicking on the ... button of the property to link a style or a style group opens the dialog to select a style or style group. Here, you can assign a style or style group and detach the linking of style and style groups.



## Information

*Only style groups and styles that can be linked to the element from which the dialog was opened are offered.*



Parameters	Description
<b>List of projects</b>	Display of the global project.
<b>List of styles</b>	<p>List of styles and style groups available. Clicking on a style selects it.</p> <p>The list can be sorted and filtered.</p> <p><u>Toolbar and context menu:</u></p> <ul style="list-style-type: none"> <li>▶ <b>Remove all filters:</b> Clicking removes the filter settings</li> <li>▶ <b>Expand all:</b> Allows all or selected nodes to be expanded or collapsed.</li> </ul>
<b>No selection</b>	Removes pre-existing styles from the property.

#### CLOSE DIALOG

Parameters	Description
<b>OK</b>	Applies settings and closes the dialog.
<b>Cancel</b>	Discards all changes and closes the dialog.
<b>Help</b>	Opens online help.

#### LINK STYLE OR STYLE GROUP

To link a style or style group:

1. Open the dialog.
2. Click on the desired style or style group.
3. Click on **OK**.

The style or style group with all its styles is transferred to the property and applied to all selected elements.

#### LINK RULES

The following is applicable for the linking of styles or style groups:

- ▶ Only styles that correspond to the target property are linked.
- ▶ When linking style groups, only styles that are supported by the properties of the element are linked.

## DETACH LINKING

To detach the linking of a style or style group:

1. Open the dialog.
2. Click on **No selection**.

The style or the style group is removed from the property and the dialog is closed. The selected elements contain the properties of the last style that was linked.