

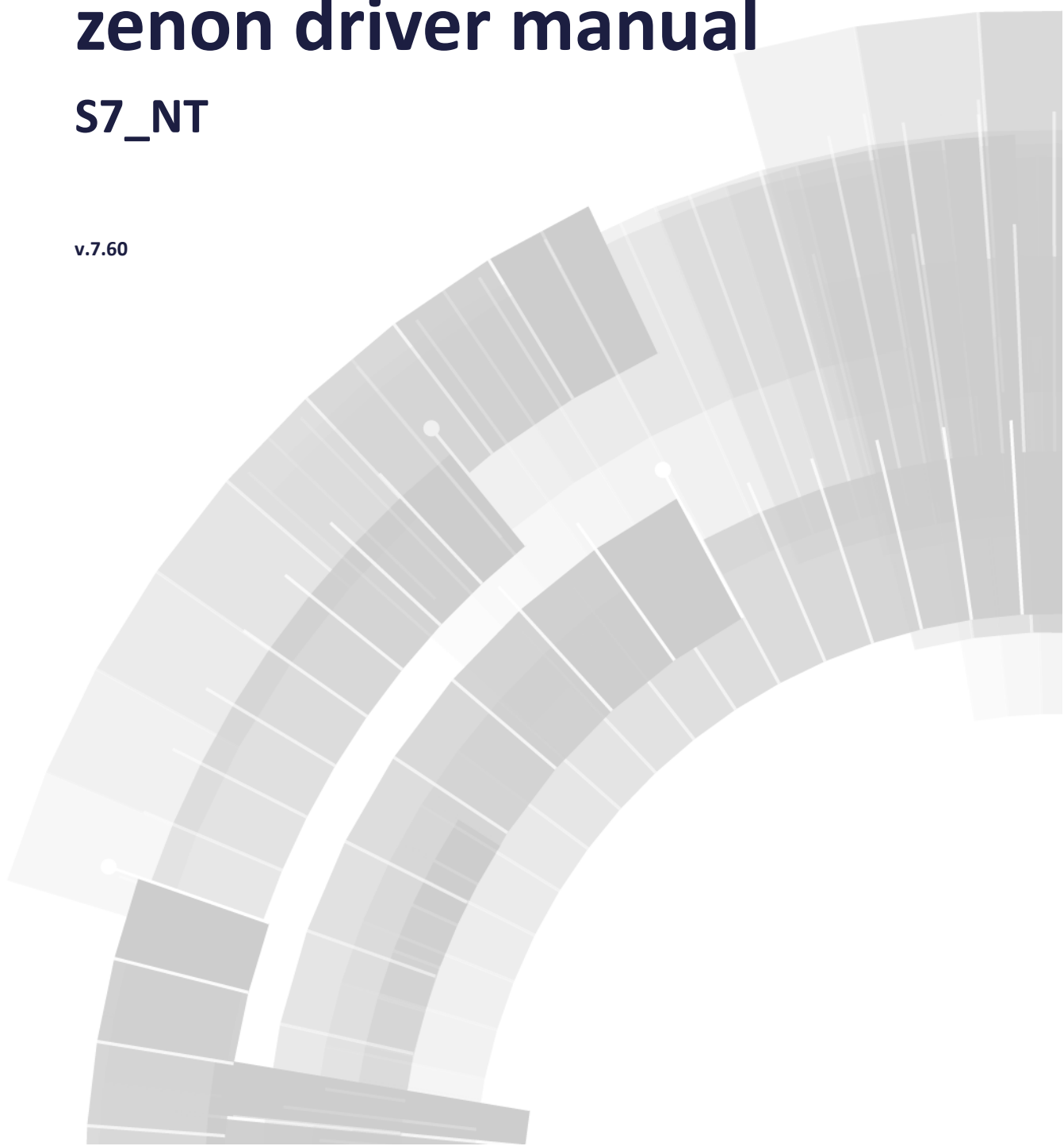


**COPADATA**  
do it your way

# zenon driver manual

## S7\_NT

v.7.60





©2017 Ing. Punzenberger COPA-DATA GmbH

All rights reserved.

Distribution and/or reproduction of this document or parts thereof in any form are permitted solely with the written permission of the company COPA-DATA. Technical data is only used for product description and are not guaranteed qualities in the legal sense. Subject to change, technical or otherwise.

# Contents

<b>1. Welcome to COPA-DATA help .....</b>	<b>5</b>
<b>2. S7_NT.....</b>	<b>6</b>
<b>3. S7_NT - Data sheet .....</b>	<b>6</b>
<b>4. Driver history .....</b>	<b>7</b>
<b>5. Requirements.....</b>	<b>8</b>
5.1 PC .....	8
<b>6. Configuration .....</b>	<b>9</b>
6.1 Creating a driver.....	10
6.2 Settings in the driver dialog .....	13
6.2.1 General .....	14
6.2.2 Driver dialog S7 .....	17
6.3 Definition of a driver in zenon .....	19
<b>7. Configure PC station .....</b>	<b>20</b>
<b>8. Creating variables.....</b>	<b>26</b>
8.1 Creating variables in the Editor.....	26
8.2 Addressing.....	30
8.3 Driver objects and datatypes .....	31
8.3.1 Driver objects .....	31
8.3.2 Mapping of the data types .....	33
8.4 Creating variables by importing .....	34
8.4.1 XML import.....	35
8.4.2 DBF Import/Export .....	35
8.5 Communication details (Driver variables).....	42
8.5.1 additional driver variables.....	47
<b>9. Driver-specific functions .....</b>	<b>48</b>
<b>10. Driver commands .....</b>	<b>48</b>

<b>11. Error analysis.....</b>	<b>50</b>
11.1 Analysis tool .....	50
11.2 Check list .....	51

# 1. Welcome to COPA-DATA help

## **ZENON VIDEO-TUTORIALS**

You can find practical examples for project configuration with zenon in our YouTube channel ([https://www.copadata.com/tutorial\\_menu](https://www.copadata.com/tutorial_menu)). The tutorials are grouped according to topics and give an initial insight into working with different zenon modules. All tutorials are available in English.

## **GENERAL HELP**

If you cannot find any information you require in this help chapter or can think of anything that you would like added, please send an email to [documentation@copadata.com](mailto:documentation@copadata.com) (<mailto:documentation@copadata.com>).

## **PROJECT SUPPORT**

You can receive support for any real project you may have from our Support Team, who you can contact via email at [support@copadata.com](mailto:support@copadata.com) (<mailto:support@copadata.com>).

## **LICENSES AND MODULES**

If you find that you need other modules or licenses, our staff will be happy to help you. Email [sales@copadata.com](mailto:sales@copadata.com) (<mailto:sales@copadata.com>).

## 2. S7\_NT

### 3. S7\_NT - Data sheet

General:	
Driver file name	S7_NT.exe
Driver name	S7 driver Softnet
PLC types	Siemens S7 300/400 and other compatible PLCs
PLC manufacturer	Inat; MPI; Profibus DP; Siemens; Vipa; Process-Informatik;

Driver supports:	
Protocol	Profibus DP; MPI; TCP/IP - RFC1006; ISO 8073;
Addressing: Address-based	X
Addressing: Name-based	--
Spontaneous communication	--
Polling communication	X
Online browsing	--
Offline browsing	X
Real-time capable	--
Blockwrite	--
Modem capable	--
Serial logging	--
RDA numerical	X
RDA String	--
Hysteresis	--

extended API	--
Supports status bit <b>WR-SUC</b>	--
alternative IP address	--

Requirements:	
Hardware PC	CP 5623 ; CP 5621; for TCP/IP and ISO protocol: standard network card; according cable
Software PC	SIMATIC NET (Softnet)
Hardware PLC	according Communication Processors (MPI / H1 / TCP/IP) from Siemens, Inat, Vipa or Prozess-Informatik (S7-LAN: MPI to TCP/IP Gateway)
Software PLC	--
Requires v-dll	--

Platforms:	
Operating systems	Windows 7, 8, 8.1, 10, Server 2008R2, Server 2012, Server 2012R2, Server 2016;
CE platforms	-;

## 4. Driver history

Date	Driver version	Change
07.07.08	1100	Created driver documentation

### DRIVER VERSIONING

The versioning of the drivers was changed with zenon 7.10. There is a cross-version build number as of this version. This is the number in the 4th position of the file version,

For example: **7.10.0.4228** means: The driver is for version **7.10** service pack **0**, and has the build number **4228**.

Expansions or error rectifications will be incorporated into a build in the future and are then available from the next consecutive build number.



### Example

*A driver extension was implemented in build **4228**. The driver that you are using is build number **8322**. Because the build number of your driver is higher than the build number of the extension, the extension is included. The version number of the driver (the first three digits of the file version) do not have any significance in relation to this. The drivers are version-agnostic*

## 5. Requirements

This chapter contains information on the requirements that are necessary for use of this driver.

### 5.1 PC

#### HARDWARE

e.g. CP 5611, MPI interface, MPI cable.

#### SOFTWARE

Copy the driver file S7\_NT.EXE to the current zenon directory (unless it is already there).

Installation of the Siemens software:

- ▶ Install SIMATIC NET SOFTNET S7 (V6.0 or higher) without SIMATIC NCM PC/S7

<input checked="" type="checkbox"/> AuthorSW V2.4.2	7 MB
<input checked="" type="checkbox"/> SIMATIC NET PC-Software V6.0	174 MB
<input type="checkbox"/> SIMATIC NCM PC/S7 V5.1 SP2	190 MB

- ▶ Install SIMATIC NET SCHLÜSSEL-DISK
- ▶ SIMATIC SOFTWARE STEP7 from 5.1 SP3 including NCM S7



The following programs are required for setup: (Siemens)

- ▶ Startup assistant
- ▶ Configure PC station

For a description of the menu entries of the Siemens programs, see the online help of those programs.

#### CONNECTION:

- ▶ Connection from the CP 5611 via the "Simatic MPI cable" to the interface of the CPU module(s). Profibus wiring
- ▶ Depending on the employed hardware, the data transmission rate can range from 187.5KB to 1.5MB.

## 6. Configuration

In this chapter you will learn how to use the driver in a project and which settings you can change.

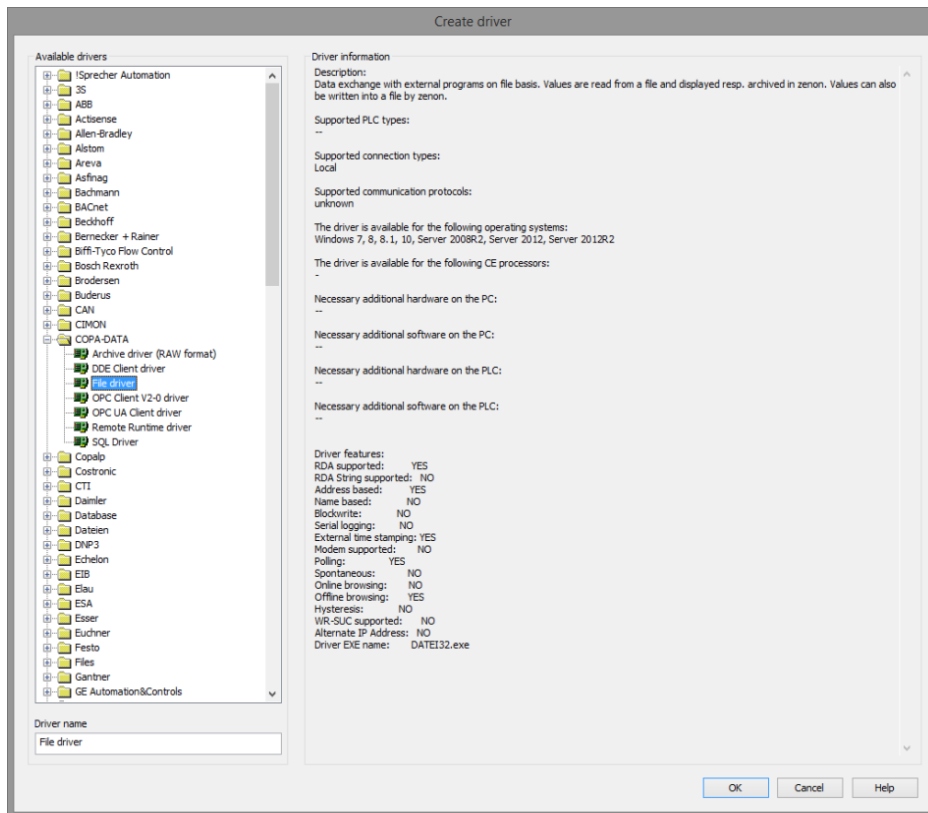


#### Information

*Find out more about further settings for zenon variables in the chapter Variables (main.chm::/15247.htm) of the online manual.*

## 6.1 Creating a driver

In the **Create driver** dialog, you create a list of the new drivers that you want to create.



Parameter	Description
<b>Available drivers</b>	<p>List of all available drivers.</p> <p>The display is in a tree structure:            [+] expands the folder structure and shows the drivers contained therein.            [-] reduces the folder structure</p> <p>Default: no selection</p>
<b>Driver name</b>	<p>Unique <b>Identification</b> of the driver.</p> <p>Default: Empty</p> <p>The input field is pre-filled with the pre-defined <b>Identification</b> after selecting a driver from the list of available drivers.</p>
<b>Driver information</b>	<p>Further information on the selected driver.</p> <p>Default: Empty</p> <p>The information on the selected driver is shown in this area after selecting a driver.</p>

#### CLOSE DIALOG

Option	Description
<b>OK</b>	Accepts all settings and opens the driver configuration dialog of the selected driver.
<b>Cancel</b>	Discards all changes and closes the dialog.
<b>Help</b>	Opens online help.



#### Information

*The content of this dialog is saved in the file called `Treiber_[Language].xml`. You can find this file in the following folder: `C:\ProgramData\COPA-DATA\zenon[version number]`.*

#### CREATE NEW DRIVER

In order to create a new driver:

1. Right-click on **Driver** in the Project Manager and select **New driver** in the context menu.  
 Optional: Select the **New driver** button from the toolbar of the detail view of the **Variables**.  
 The **Create driver** dialog is opened.

2. The dialog offers a list of all available drivers.



3. Select the desired driver and name it in the **Driver name** input field.  
This input field corresponds to the **Identification** property. The name of the selected driver is automatically inserted into this input field by default.

The following is applicable for the **Driver name**:

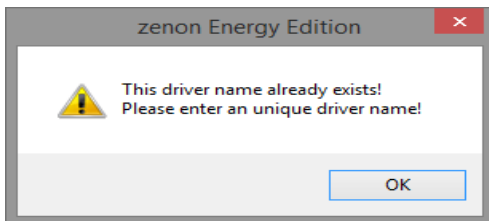
- The **Driver name** must be unique.  
If a driver is used more than once in a project, a new name has to be given each time.  
This is evaluated by clicking on the **OK** button. If the driver is already present in the project, this is shown with a warning dialog.
- The **Driver name** is part of the file name.  
Therefore it may only contain characters which are supported by the operating system.  
Invalid characters are replaced by an underscore (\_).
- **Attention:** This name cannot be changed later on.

4. Confirm the dialog by clicking on the **OK** button.  
The configuration dialog for the selected driver is opened.

**Note:** The language of driver names cannot be switched. They are always shown in the language in which they have been created, regardless of the language of the Editor. This also applies to driver object types.

## DRIVER NAME **DIALOG ALREADY EXISTS**

If there is already a driver in the project, this is shown in a dialog. The warning dialog is closed by clicking on the **OK** button. The driver can be named correctly.



## <CD\_PRODUCNTAME> PROJECT

*The following drivers are created automatically for newly-created projects:*

- ▶ **Intern**
- ▶ **MathDr32**
- ▶ **SysDrv**



### Information

Only the required drivers need to be present in a zenon project. Drivers can be added at a later time if required.

## 6.2 Settings in the driver dialog

You can change the following settings of the driver:

### 6.2.1 General

The configuration dialog is opened when a driver is created. In order to be able to open the dialog later for editing, double click on the driver in the list or click on the **Configuration** property.



Option	Description
<b>Mode</b>	<p>Allows to switch between hardware mode and simulation mode</p> <ul style="list-style-type: none"> <li>▶ <b>Hardware:</b> A connection to the control is established.</li> <li>▶ <b>Simulation - static:</b> No communication between to the control is established, the values are simulated by the driver. In this modus the values remain constant or the variables keep the values which were set by zenon Logic. Each variable has its own memory area. E.g. two variables of the type marker with offset 79 can have different values in the Runtime and do not influence each other. Exception: The simulator driver.</li> <li>▶ <b>Simulation - counting:</b> No communication between to the control is established, the values are simulated by the driver. In this modus the driver increments the values within a value range automatically.</li> <li>▶ <b>Simulation - programmed:</b> No communication is established to the PLC. The values are calculated by a freely programmable simulation project. The simulation project is created with the help of the zenon Logic Workbench and runs in a zenon Logic Runtime which is integrated in the driver. For details see chapter Driver simulation (main.chm::/25206.htm).</li> </ul>
<b>Keep update list in the memory</b>	<p>Variables which were requested once are still requested from the control even if they are currently not needed. This has the advantage that e.g. multiple screen switches after the screen was opened for the first time are executed faster because the variables need not be requested again. The disadvantage is a higher load for the communication to the control.</p>
<b>Output can be written</b>	<p><b>Active:</b> Outputs can be written.</p> <p><b>Inactive:</b> Writing of outputs is prevented.</p> <p><b>Note:</b> Not available for every driver.</p>
<b>Variable image remanent</b>	<p>This option saves and restores the current value, time stamp and the states of a data point.</p> <p>Fundamental requirement: The variable must have a valid value and time stamp.</p> <p>The variable image is saved in mode hardware if:</p> <ul style="list-style-type: none"> <li>▶ one of the states S_MERKER_1(0) up to S_MERKER8(7), REVISION(9), AUS(20) or ERSATZWERT(27) is active</li> </ul> <p>The variable image is always saved if:</p>

	<ul style="list-style-type: none"> <li>▶ the variable is of the driver object type <b>Communication details</b></li> <li>▶ the driver runs in simulation mode. (not programmed simulation)</li> </ul> <p>The following states are not restored at the start of the Runtime:</p> <ul style="list-style-type: none"> <li>▶ SELECT (8)</li> <li>▶ WR-ACK (40)</li> <li>▶ WR-SUC (41)</li> </ul> <p>The mode <b>Simulation - programmed</b> at the driver start is not a criterion in order to restore the remanent variable image.</p>
<b>Stop on Standby Server</b>	<p>Setting for redundancy at drivers which allow only one communication connection. For this the driver is stopped at the Standby Server and only started at the upgrade.</p> <p><b>Attention:</b> If this option is active, the gapless archiving is no longer guaranteed.</p> <p><b>Active:</b> Sets the driver at the not-process-leading Server automatically in a stop-like state. In contrast to stopping via driver command, the variable does not receive status <b>switched off (statusverarbeitung.chm::24150.htm)</b> but an empty value. This prevents that at the upgrade to the Server irrelevant values are created in the AML, CEL and Historian.</p> <p><b>Note:</b> Not available if the CE terminal serves as a data server. You can find further information in the zenon Operator manual in the CE terminal as a data server chapter.</p>
<b>Global Update time</b>	<p><b>Active:</b> The set <b>Global update time</b> in ms is used for all variables in the project. The priority set at the variables is not used.</p> <p><b>Inactive:</b> The set priorities are used for the individual variables.</p>
<b>Priority</b>	<p>The polling times for the individual priority classes are set here. All variables with the according priority are polled in the set time.</p> <p>The variables are allocated separately in the settings of the variable properties.</p> <p>The communication of the individual variables can be graded according to importance or required topicality using the priority classes. Thus the communication load is distributed better.</p> <p><b>Attention:</b> Priority classes are not supported by each driver For example, drivers that communicate spontaneously do not support it.</p>



## CLOSE DIALOG

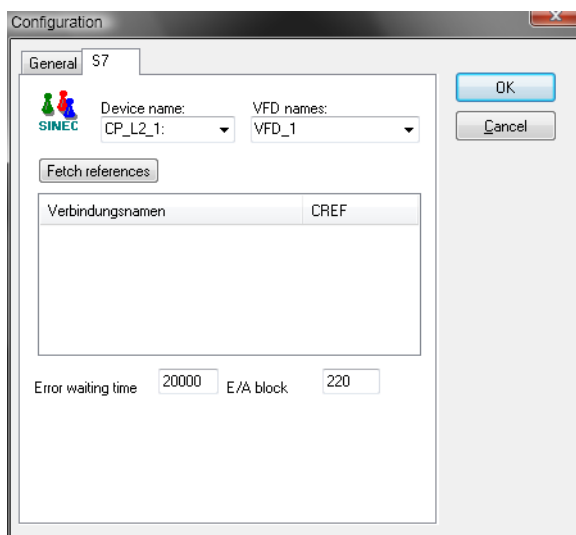
Options	Description
<b>OK</b>	Applies all changes in all tabs and closes the dialog.
<b>Cancel</b>	Discards all changes in all tabs and closes the dialog.
<b>Help</b>	Opens online help.

## UPDATE TIME FOR CYCLICAL DRIVERS

The following applies for cyclical drivers:

For **Set value**, **advising** of variables and **Requests**, a read cycle is immediately triggered for all drivers - regardless of the set update time. This ensures that the value is immediately available for visualization after writing. Update times can therefore be shorter than pre-set for cyclical drivers.

### 6.2.2 Driver dialog S7



Parameter	Description
<b>Device name</b>	CP_L2_1: corresponds to selected online interface
<b>VFD names</b>	e.g. "zenon" corresponds to the name of the application that was specified in the program HW Config.
<b>Hole references</b>	must list the connection names that were specified in the program HW Config.
<b>Connection names</b>	
<b>CREF</b>	Channel numbers starting with 0; in the sequence of the configuration in the program COM SL7. Corresponds to the net address for variable configuration in zenon.
<b>Error waiting time (ms)</b>	
<b>E/A block size</b>	Defines the maximum size of a data block for inputs/outputs.

If you see the references after entering the VFD name, close the driver dialog with **OK** and reopen it.

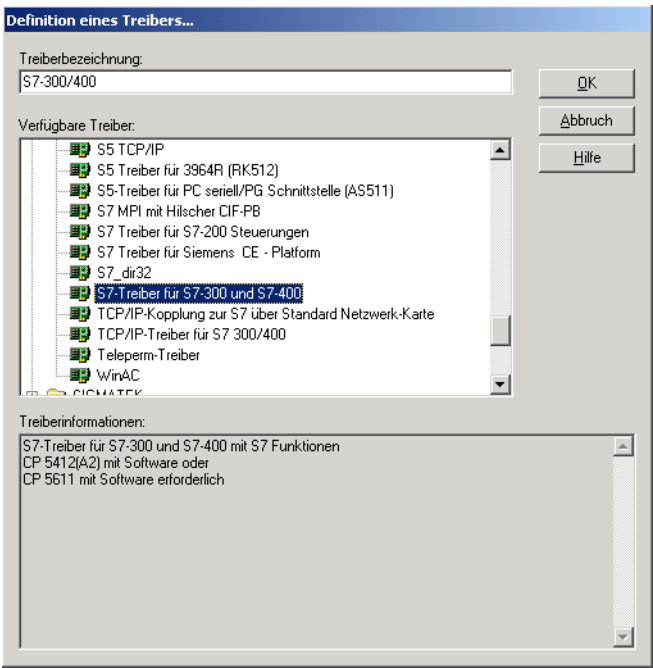
If you cannot see any references, delete and reload the driver.



### Attention

Do not make any manual changes in the field **Device name**. The changes will not be considered and you will not be able to establish a connection.

### 6.3 Definition of a driver in zenon

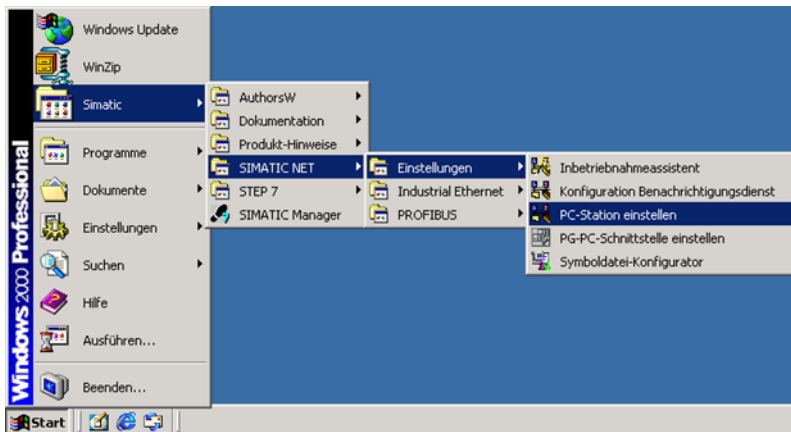


Parameter	Description
Driver name	Enter a free text for the selected driver, e.g. S7 driver for S7-300 and S7-400.
Available drivers	The standard package already contains drivers. Scroll through the list and select one of the drivers by double-clicking on it.

## 7. Configure PC station

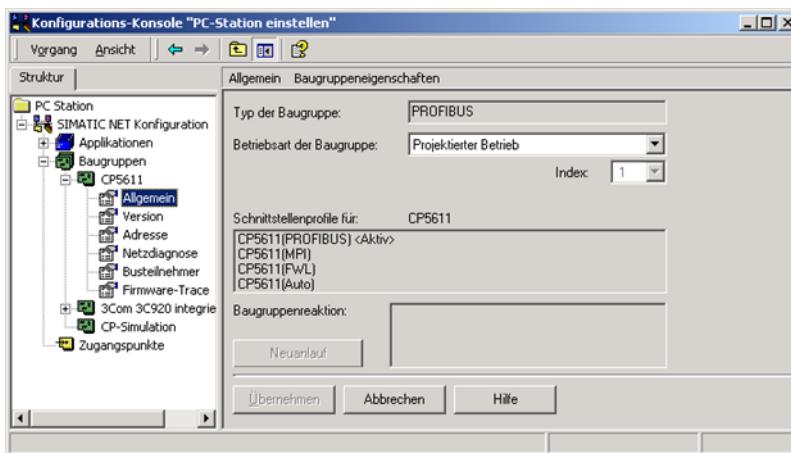
### COMPONENT CONFIGURATION TOOL

1. *START -> SIMATIC -> SIMATIC NET -> Settings -> Configure PC station*



You can adjust all settings via the configuration console.

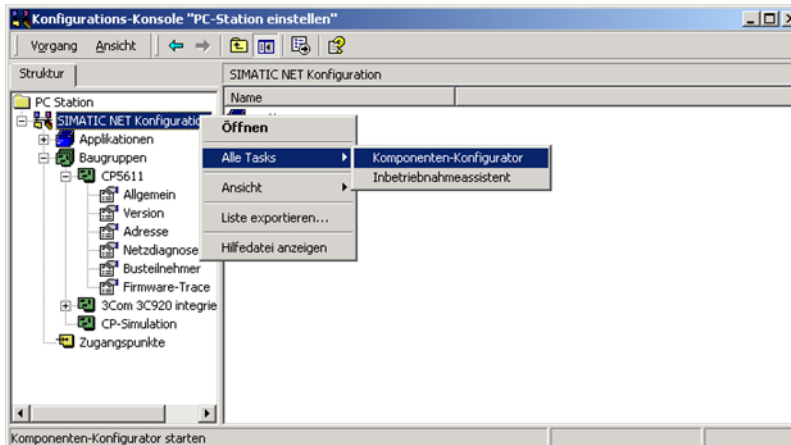
2. All available assembly groups and access points will be displayed.



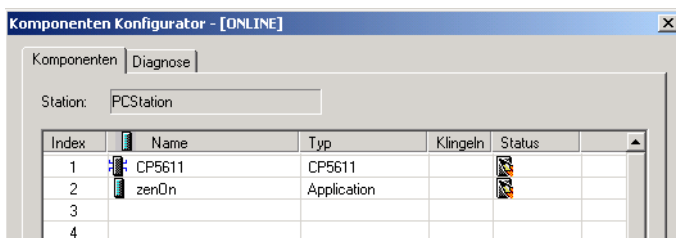
**Important:** The operation type of the assembly group must be set to "Configured operation".

The index corresponds to the index displayed in the component configuration tool.

3. Open the component configurator.

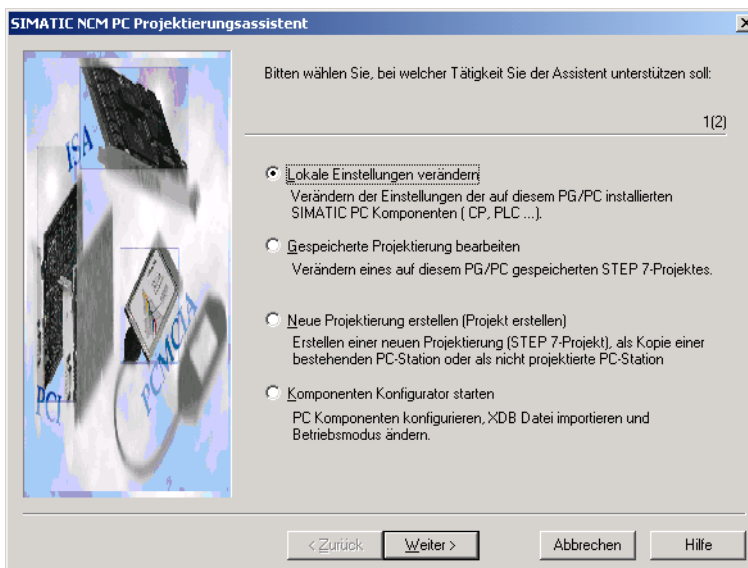


4. Click "**Add...**" in the component configuration tool to create the application. In this case, the application was called "**zenOn**".

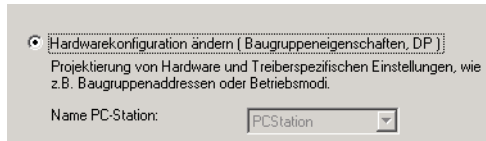


## CONFIGURATION ASSISTANT

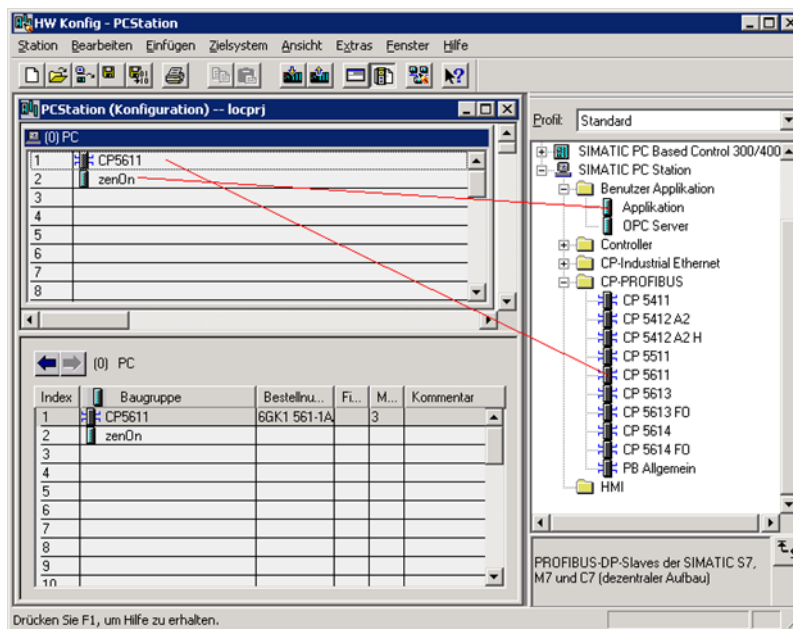
1. Start the configuration assistant (*START -> SIMATIC -> SIMATIC NET ->*) for further settings:
2. Use the option "Change local settings" to continue with the configuration.



3. You configure the hardware first.

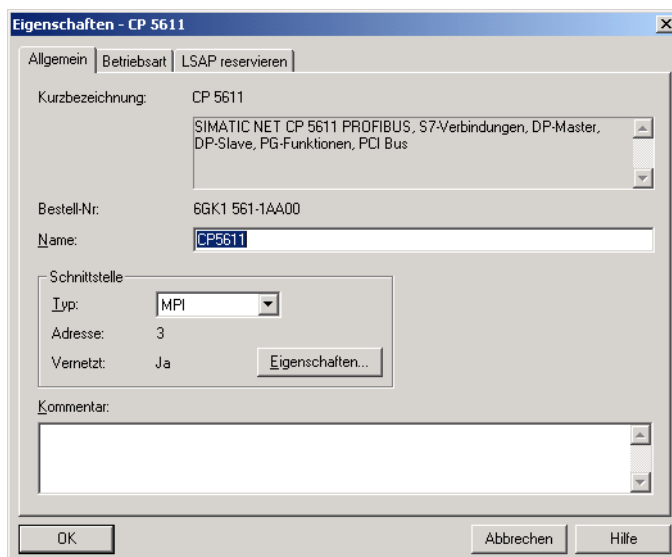


4. Add components.

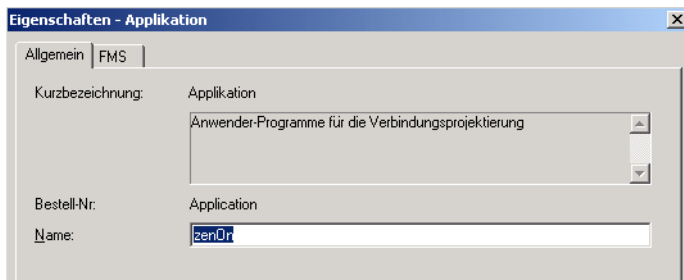


Please follow the right sequence. (see component configuration tool.)

5. Open the properties of the CP5611
6. Change the type of the interface to MPI.



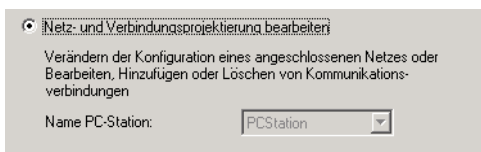
7. Open the properties of the application



You will find the names again in the component configuration tool. You also enter this name in the driver configuration under "**VFD names**".

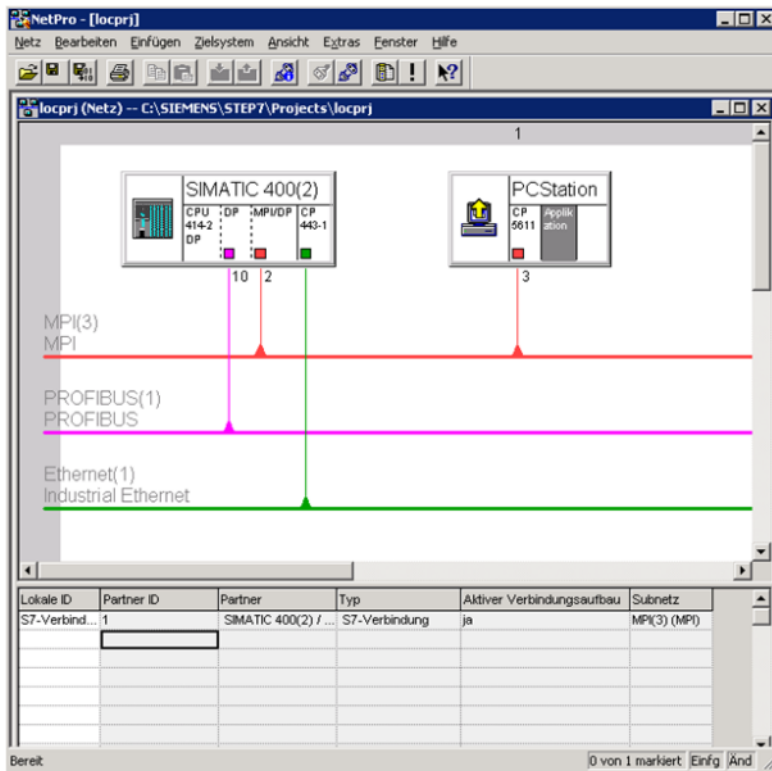
**Attention:** (case sensitive!)

8. Select, under the "**Station**" menu item, the entry "**Save and translate**".
9. Now you can transfer the data to the assembly group. To do this, use the *Target system -> Load to assembly group...* menu item
10. Exit the program HW config - PC station
11. Now you have to continue with the configuration of the connections.



## NETWORK

1. Now use the **Netpro** program to configure your network.



**Note:** The S7 is also configured with the program HW config.

2. Now connect the assembly groups with the MPI bus.

**Note:** Change the baud rate at the MPI bus. First you should change the baud rate of the stations with the program HW config and then transmit it to the stations.

The connection table will only be visible if you select an assembly group that is capable of connections. In this case, either "**Application**" at the PC station or "**CPU 414-2 DP**" at the SIMATIC 400.

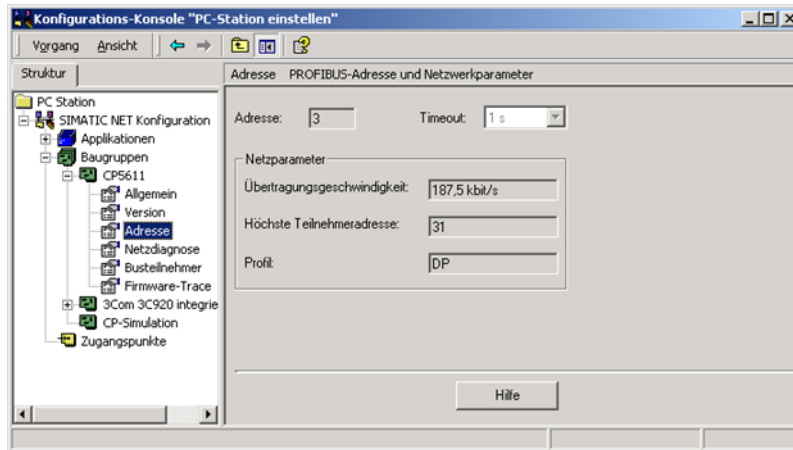
3. Create a new connection in the table. Select the connection type "S7 connection".
4. Select, under the "**Network**" menu item, the entry "**Save and translate**".
5. Transfer the data to the assembly group. To do so, select a station and then select the "*Target system -> Load -> Highlighted and partner stations*" menu item.
6. Close Netpro program.

## TESTING

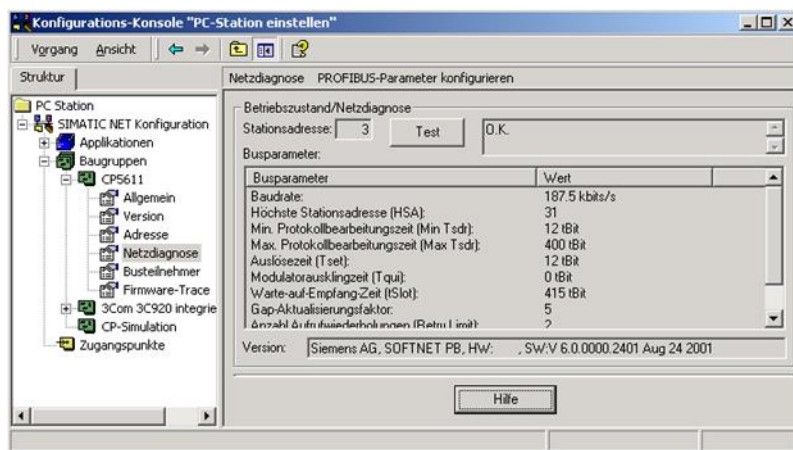
Test the assembly group in the "**Configuration console**" program.



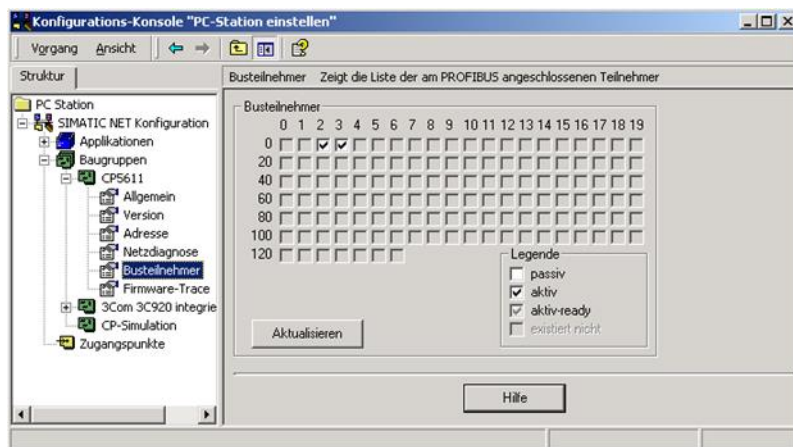
### 1. Checking the baud rate.



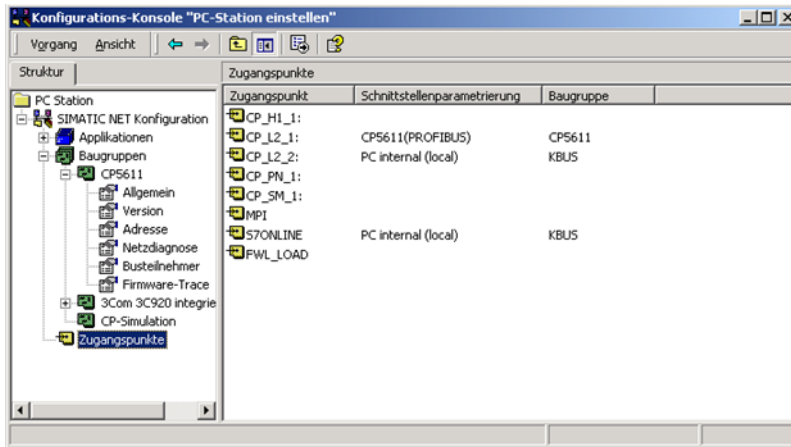
### 2. Checking the MPI address.



### 3. The configured bus participants must be displayed.



4. Use the access point "CP\_L2\_1:" in the driver configuration of the S7\_NT driver of zenon.



## 8. Creating variables

This is how you can create variables in the zenon Editor:

### 8.1 Creating variables in the Editor

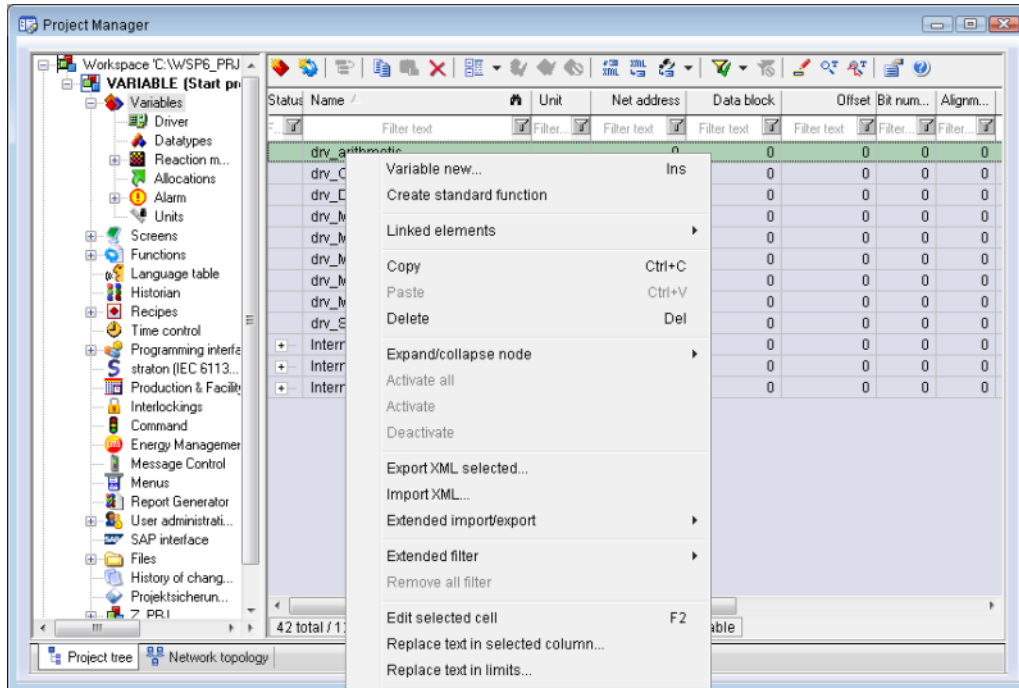
Variables can be created:

- ▶ as simple variables
- ▶ in arrays (main.chm::/15262.htm)
- ▶ as structure variables (main.chm::/15278.htm)

#### VARIABLE DIALOG

To create a new variable, regardless of which type:

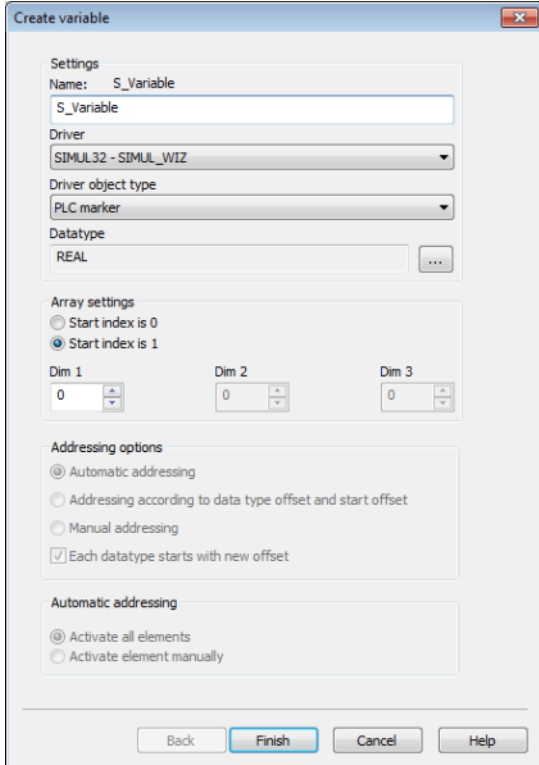
1. Select the **New variable** command in the **Variables** node in the context menu



The dialog for configuring variables is opened

2. Configure the variable

### 3. The settings that are possible depends on the type of variables



Property	Description
<b>Name</b>	<p>Distinct name of the variable. If a variable with the same name already exists in the project, no additional variable can be created with this name.</p> <p>Maximum length: 128 characters</p> <p><b>Attention:</b> The characters # and @ are not permitted in variable names. If non-permitted characters are used, creation of variables cannot be completed and the <b>Finish</b> button remains inactive.</p> <p><b>Note:</b> For some drivers, the addressing is possible over the property <b>Symbolic address</b>, as well.</p>
<b>Drivers</b>	<p>Select the desired driver from the drop-down list.</p> <p><b>Note:</b> If no driver has been opened in the project, the driver for internal variables (<b>Intern.exe (Main.chm::/Intern.chm::/Intern.htm)</b>) is automatically loaded.</p>
<b>Driver Object Type</b> (cti.chm::/28685.htm)	Select the appropriate driver object type from the drop-down list.

<b>Data Type</b>	Select the desired data type. Click on the ... button to open the selection dialog.
<b>Array settings</b>	Expanded settings for array variables. You can find details in the Arrays chapter.
<b>Addressing options</b>	Expanded settings for arrays and structure variables. You can find details in the respective section.
<b>Automatic element activation</b>	Expanded settings for arrays and structure variables. You can find details in the respective section.

## SYMBOLIC ADDRESS

The **Symbolic address** property can be used for addressing as an alternative to the **Name** or **Identification** of the variables. Selection is made in the driver dialog; configuration is carried out in the variable property. When importing variables of supported drivers, the property is entered automatically.

Maximum length: 1024 characters.

## INHERITANCE FROM DATA TYPE

**Measuring range**, **Signal range** and **Set value** are always:

- ▶ derived from the datatype
- ▶ Automatically adapted if the data type is changed

**Note for signal range:** If a change is made to a data type that does not support the set **signal range**, the **signal range** is amended automatically. For example, for a change from **INT** to **SINT**, the **signal range** is changed to 127. The amendment is also carried out if the **signal range** was not inherited from the data type. In this case, the **measuring range** must be adapted manually.

## 8.2 Addressing

Property	Description
<b>Name</b>	<p>Freely definable name.</p> <p><b>Attention:</b> For every zenon project the name must be unambiguous.</p>
<b>Identification</b>	<p>Freely definable identification. E.g. for Resources label, comments, ...</p>
<b>Net address</b>	<p>Network address of variable.</p> <p>This address refers to the CREF in the connection list of the driver. This defines the PLC, on which the variable resides.</p>
<b>Data block</b>	<p>For variables of object type <code>Extended data block</code>, enter the datablock number here.</p> <p>Adjustable from 0 to 4294967295.</p> <p>You can take the exact maximum area for data blocks from the manual of the PLC.</p>
<b>Offset</b>	<p>Offset of variables. Equal to the memory address of the variable in the PLC. Adjustable from 0 to 4294967295.</p> <p>Most S7 controllers support a maximum offset of 65535. You can look up the exact maximum range for each data block in the manual of the PLC.</p>
<b>Alignment</b>	not used for this driver
<b>Bit number</b>	<p>Number of the bit within the configured offset.</p> <p>Possible entries: 0 to 65535. Working range [0..7]</p>
<b>String length</b>	<p>Only available for String variables. Maximum number of characters that the variable can take.</p>
<b>Driver connection/Driver Object Type</b>	Object type of the variables. Depending on the driver used, is selected when the variable is created and can be changed here.
<b>Driver connection/Data Type</b>	<p>Data type of the variable. Is selected during the creation of the variable; the type can be changed here.</p> <p><b>Attention:</b> If you change the data type later, all other properties of the variable must be checked and adjusted, if necessary.</p>

## 8.3 Driver objects and datatypes

Driver objects are areas available in the PLC, such as markers, data blocks etc. Here you can find out which driver objects are provided by the driver and which IEC data types can be assigned to the respective driver objects.

### 8.3.1 Driver objects

The following driver object types are available in this driver:

Driver Object Type	Channel type	Read	Write	Supported data types	Comment
<b>Output</b>	11	X	X	USINT, BOOL, SINT, UINT, INT	
<b>Ext. Data block</b>	34	X	X	REAL, BOOL, DINT, UDINT, USINT, INT, UINT, SINT, STRING	
<b>Input</b>	10	X	--	USINT, BOOL, SINT, UINT, INT	
<b>PLC marker</b>	8	X	X	REAL, BOOL, DINT, UDINT, USINT, INT, UINT, SINT, STRING	
<b>Counter</b>	23	X	X	UDINT	
<b>Timer</b>	22	X	--	REAL	
<b>Communication details</b>	35	X	X	BOOL, SINT, USINT, INT, UINT, DINT, UDINT, REAL, STRING	Variables for the statistical analysis of communication.  You can find detailed information on this in the Communication details (Driver variables) (on page 42) chapter.

## OBJECTS FOR PROCESS VARIABLES IN ZENON

Object	Read	Write
Configuration		
Bit marker	X	X
Byte marker	X	X
Word marker	X	X
DWord marker	X	X



DataBit	X	X
DateByte	X	X
DataWord	X	X
DataDoubleword	X	X
DataFloat	X	X
DataString	X	X
Input bit	X	--
InputByte	X	--
InputWord	X	--
Output Bit	X	X
Output byte	X	X
Output Word	X	X
Timer Float	X	--
Counter Dword	X	X
Float marker	X	X
String marker	X	X
Driver variable Bit	X	X
Driver variable Byte	X	X
Driver variable Word	X	X
Driver variable Dword	X	X
Driver variable Float	X	X
Driver variable String	X	X

Net-address = CREF Number

### Key:

X => supported

-- => not supported

## 8.3.2 Mapping of the data types

All variables in zenon are derived from IEC data types. The following table compares the IEC datatypes with the datatypes of the PLC.

PLC	zenon	Data type
	BOOL	8
	USINT	9
	SINT	10
	UINT	2
	INT	1
	UDINT	4
	DINT	3
	ULINT	27
	LINT	26
	REAL	5
	LREAL	6
	STRING	12
	WSTRING	21
	DATE	18
	TIME	17
	DATE_AND_TIME	20
	TOD (Time of Day)	19

**Data type:** The property **Data type** is the internal numerical name of the data type. It is also used for the extended DBF import/export of the variables.

## 8.4 Creating variables by importing

Variables can also be imported by importing them. The XML and DBF import is available for every driver.



### Information

*You can find details on the import and export of variables in the Import-Export (main.chm::/13028.htm) manual in the Variables (main.chm::/13045.htm) section.*

### 8.4.1 XML import

During XML import of variables or data types, these are first assigned to a driver and then analyzed. Before import, the user decides whether and how the respective element (variable or data type) is to be imported:

- ▶ **Import:** The element is imported as a new element.
- ▶ **Overwrite:** The element is imported and overwrites a pre-existing element.
- ▶ **Do not import:** The element is not imported.

**Note:** The actions and their durations are shown in a progress bar during import.

#### REQUIREMENTS

The following conditions are applicable during import:

- ▶ Backward compatibility

At the XML import/export there is no backward compatibility. Data from older zenon versions cannot be taken over. The handover of data from newer to older versions is not supported.

- ▶ Consistency

The XML file to be imported has to be consistent. There is no plausibility check on importing the file. If there are errors in the import file, this can lead to undesirable effects in the project.

Particular attention must be paid to this, primarily if not all properties exist in the XML file and these are then filled with default values. E.g.: A binary variable has a limit value of 300.

- ▶ Structure data types

Structure data types must have the same number of structure elements.

Example: A structure data type in the project has 3 structure elements. A data type with the same name in the XML file has 4 structure elements. Then none of the variables based on this data type in the export file are imported into the project.



#### Hint

You can find further information on XML import in the **Import - Export** manual, in the **XML import (main.chm::/13046.htm)** chapter.

### 8.4.2 DBF Import/Export

Data can be exported to and imported from dBase.



### Information

*Import and Export via CSV or dBase supported; no driver specific variable settings, such as formulas. Use export/import via XML for this.*

## IMPORT DBF FILE

To start the import:

1. right-click on the variable list
2. in the drop-down list of **Extended export/import...** select the **Import dBase** command
3. follow the import assistant

The format of the file is described in the chapter File structure.



### Information

*Note:*

- ▶ Driver object type and data type must be amended to the target driver in the DBF file in order for variables to be imported.
- ▶ dBase does not support structures or arrays (complex variables) at import.

## EXPORT DBF FILE

To start the export:

1. right-click on the variable list
2. in the drop-down list of **Extended export/import...** select the **Export dBase...** command
3. follow the export assistant



### Attention

DBF files:

- ▶ must correspond to the 8.3 DOS format for filenames (8 alphanumeric characters for name, 3 character suffix, no spaces)
- ▶ must not have dots (.) in the path name.  
e.g. the path `C:\users\John.Smith\test.dbf` is invalid.  
Valid: `C:\users\JohnSmith\test.dbf`
- ▶ must be stored close to the root directory in order to fulfill the limit for file name length including path: maximum 255 characters

The format of the file is described in the chapter File structure.



### Information

*dBase does not support structures or arrays (complex variables) at export.*

## FILE STRUCTURE OF THE DBASE EXPORT FILE

The dBaseIV file must have the following structure and contents for variable import and export:



### Attention

dBase does not support structures or arrays (complex variables) at export.

DBF files must:

- ▶ conform with their name to the 8.3 DOS format (8 alphanumeric characters for name, 3 characters for extension, no space)
- ▶ Be stored close to the root directory (Root)

## STRUCTURE

Identification	Type	Field size	Comment
KANALNAME	Char	128	Variable name.  The length can be limited using the MAX_LAENGE entry in <b>project.ini</b> .
KANAL_R	C	128	The original name of a variable that is to be replaced by the new name entered under "VARIABLENNAME" (field/column must be entered manually).  The length can be limited using the MAX_LAENGE entry in <b>project.ini</b> .
KANAL_D	Log	1	The variable is deleted with the 1 entry (field/column has to be created by hand).
TAGNR	C	128	Identification.  The length can be limited using the MAX_LAENGE entry in <b>project.ini</b> .
EINHEIT	C	11	Technical unit
DATENART	C	3	Data type (e.g. bit, byte, word, ...) corresponds to the data type.
KANALTYP	C	3	Memory area in the PLC (e.g. marker area, data area, ...) corresponds to the driver object type.
HWKANAL	Num	3	Net address
BAUSTEIN	N	3	Datablock address (only for variables from the data area of the PLC)
ADRESSE	N	5	Offset
BITADR	N	2	For bit variables: bit address For byte variables: 0=lower, 8=higher byte For string variables: Length of string (max. 63 characters)
ARRAYSIZE	N	16	Number of variables in the array for index variables ATTENTION: Only the first variable is fully available. All others are only available for VBA or the Recipegroup Manager

<b>LES_SCHR</b>	L	1	Write-Read-Authorization 0: Not allowed to set value. 1: Allowed to set value.
<b>MIT_ZEIT</b>	R	1	time stamp in zenon (only if supported by the driver)
<b>OBJEKT</b>	N	2	Driver-specific ID number of the primitive object comprises TREIBER-OBJEKTYP and DATENTYP
<b>SIGMIN</b>	Float	16	Non-linearized signal - minimum (signal resolution)
<b>SIGMAX</b>	F	16	Non-linearized signal - maximum (signal resolution)
<b>ANZMIN</b>	F	16	Technical value - minimum (measuring range)
<b>ANZMAX</b>	F	16	Technical value - maximum (measuring range)
<b>ANZKOMMA</b>	N	1	Number of decimal places for the display of the values (measuring range)
<b>UPDATERATE</b>	F	19	Update rate for mathematics variables (in sec, one decimal possible) not used for all other variables
<b>MEMTIEFE</b>	N	7	Only for compatibility reasons
<b>HDRATE</b>	F	19	HD update rate for historical values (in sec, one decimal possible)
<b>HDTIEFE</b>	N	7	HD entry depth for historical values (number)
<b>NACHSORT</b>	R	1	HD data as postsorted values
<b>DRRATE</b>	F	19	Updating to the output (for zenon DDE server, in [s], one decimal possible)
<b>HYST_PLUS</b>	F	16	Positive hysteresis, from measuring range
<b>HYST_MINUS</b>	F	16	Negative hysteresis, from measuring range
<b>PRIOR</b>	N	16	Priority of the variable
<b>REAMATRIZE</b>	C	32	Allocated reaction matrix
<b>ERSATZWERT</b>	F	16	Substitute value, from measuring range
<b>SOLLMIN</b>	F	16	Minimum for set value actions, from measuring range
<b>SOLLMAX</b>	F	16	Maximum for set value actions, from measuring range
<b>VOMSTANDBY</b>	R	1	Get value from standby server; the value of the variable is not requested from the server but from the Standby Server in redundant networks
<b>RESOURCE</b>	C	128	Resources label. Free string for export and display in lists.  The length can be limited using the MAX_LAENGE entry in <b>project.ini</b> .
<b>ADJWVBA</b>	R	1	Non-linear value adaption: 0: Non-linear value adaption is used

			1: Non-linear value adaption is not used
<b>ADJZENON</b>	C	128	Linked VBA macro for reading the variable value for non-linear value adjustment.
<b>ADJWVBA</b>	C	128	ed VBA macro for writing the variable value for non-linear value adjustment.
<b>ZWREMA</b>	N	16	Linked counter REMA.
<b>MAXGRAD</b>	N	16	Gradient overflow for counter REMA.



### Attention

*When importing, the driver object type and data type must be amended to the target driver in the DBF file in order for variables to be imported.*

## LIMIT VALUE DEFINITION

Limit definition for limit values 1 to 4, or status 1 to 4:



Identification	Type	Field size	Comment
<b>AKTIV1</b>	R	1	Limit value active (per limit value available)
<b>GRENZWERT1</b>	F	20	technical value or ID number of a linked variable for a dynamic limit value (see VARIABLEx) (if VARIABLEx is 1 and here it is -1, the existing variable linkage is not overwritten)
<b>SCHWWERT1</b>	F	16	Threshold value for limit value
<b>HYSTERESE1</b>	F	14	Is not used
<b>BLINKEN1</b>	R	1	Set blink attribute
<b>BTB1</b>	R	1	Logging in CEL
<b>ALARM1</b>	R	1	Alarm
<b>DRUCKEN1</b>	R	1	Printer output (for CEL or Alarm)
<b>QUITTIER1</b>	R	1	Must be acknowledged
<b>LOESCHE1</b>	R	1	Must be deleted
<b>VARIABLE1</b>	R	1	Dyn. limit value linking the limit is defined by an absolute value (see field GRENZWERTx).
<b>FUNC1</b>	R	1	Functions linking
<b>ASK_FUNC1</b>	R	1	Execution via Alarm Message List
<b>FUNC_NR1</b>	N	10	ID number of the linked function (if "-1" is entered here, the existing function is not overwritten during import)
<b>A_GRUPPE1</b>	N	10	Alarm/event group
<b>A_KLASSE1</b>	N	10	Alarm/event class
<b>MIN_MAX1</b>	C	3	Minimum, Maximum
<b>FARBE1</b>	N	10	Color as Windows coding
<b>GRENZTXT1</b>	C	66	Limit value text
<b>A_DELAY1</b>	N	10	Time delay
<b>INVISIBLE1</b>	R	1	Invisible

Expressions in the column "Comment" refer to the expressions used in the dialog boxes for the definition of variables. For more information, see chapter Variable definition.

## 8.5 Communication details (Driver variables)

The driver kit implements a number of driver variables. These variables are part of the driver object type **Communication details**. These are divided into:

- ▶ Information
- ▶ Configuration
- ▶ Statistics and
- ▶ Error message

The definitions of the variables implemented in the driver kit are available in the import file **drvvar.dbf** (on the installation medium in the \Predefined\Variables folder) and can be imported from there.

**Note:** Variable names must be unique in zenon. If driver variables of the driver object type **Communication details** are to be imported from **drvvar.dbf** again, the variables that were imported beforehand must be renamed.



### Information

*Not every driver supports all driver variables of the driver object type **Communication details**.*

*For example:*

- ▶ Variables for modem information are only supported by modem-compatible drivers
- ▶ Variables for the polling cycle only for pure polling drivers
- ▶ Connection-related information such as ErrorMSG only for drivers that only edit one connection at a time

## INFORMATION

Name from import	Type	Offset	Description
MainVersion	UINT	0	Main version number of the driver.
SubVersion	UINT	1	Sub version number of the driver.
BuildVersion	UINT	29	Build version number of the driver.
RTMajor	UINT	49	zenon main version number
RTMinor	UINT	50	zenon sub version number
RTSp	UINT	51	zenon Service Pack number
RTBuild	UINT	52	zenon build number
LineStateIdle	BOOL	24.0	TRUE, if the modem connection is idle
LineStateOffering	BOOL	24.1	TRUE, if a call is received
LineStateAccepted	BOOL	24.2	The call is accepted
LineStateDialtone	BOOL	24.3	Dialtone recognized
LineStateDialing	BOOL	24.4	Dialing active
LineStateRingBack	BOOL	24.5	While establishing the connection
LineStateBusy	BOOL	24.6	Target station is busy
LineStateSpecialInfo	BOOL	24.7	Special status information received
LineStateConnected	BOOL	24.8	Connection established
LineStateProceeding	BOOL	24.9	Dialing completed
LineStateOnHold	BOOL	24.10	Connection in hold
LineStateConferenced	BOOL	24.11	Connection in conference mode.
LineStateOnHoldPendConf	BOOL	24.12	Connection in hold for conference
LineStateOnHoldPendTransfer	BOOL	24.13	Connection in hold for transfer
LineStateDisconnected	BOOL	24.14	Connection terminated.
LineStateUnknow	BOOL	24.15	Connection status unknown
ModemStatus	UDINT	24	Current modem status
TreiberStop	BOOL	28	Driver stopped  For <code>driver stop</code> , the variable has the value <code>TRUE</code> and an <b>OFF</b> bit. After the driver has started, the variable has the value <code>FALSE</code> and no <b>OFF</b> bit.
SimulRTState	UDINT	60	Informs the status of Runtime for driver simulation.

ConnectionStates	STRING	61	<p>Internal connection status of the driver to the PLC.</p> <p>Connection statuses:</p> <p>0 : Connection OK</p> <p>1 : Connection failure</p> <p>2 : Connection simulated</p> <p>Formating:</p> <p>&lt;Netzadresse&gt;:&lt;Verbindungszustand&gt;;...;;</p> <p>A connection is only known after a variable has first signed in. In order for a connection to be contained in a string, a variable of this connection must be signed in once.</p> <p>The status of a connection is only updated if a variable of the connection is signed in. Otherwise there is no communication with the corresponding controller.</p>
------------------	--------	----	--

## CONFIGURATION

Name from import	Type	Offset	Description
ReconnectInRead	BOOL	27	If TRUE, the modem is automatically reconnected for reading
ApplyCom	BOOL	36	Apply changes in the settings of the serial interface. Writing to this variable immediately results in the method SrvDrvVarApplyCom being called (which currently has no further function).
ApplyModem	BOOL	37	Apply changes in the settings of the modem. Writing this variable immediately calls the method SrvDrvVarApplyModem. This closes the current connection and opens a new one according to the settings <b>PhoneNumberSet</b> and <b>ModemHwAdrSet</b> .
PhoneNumberSet	STRING	38	Telephone number, that should be used
ModemHwAdrSet	DINT	39	Hardware address for the telephone number

GlobalUpdate	UDINT	3	Update time in milliseconds (ms).
BGlobalUpdaten	BOOL	4	TRUE, if update time is global
TreiberSimul	BOOL	5	TRUE, if driver in sin simulation mode
TreiberProzab	BOOL	6	TRUE, if the variables update list should be kept in the memory
ModemActive	BOOL	7	TRUE, if the modem is active for the driver
Device	STRING	8	Name of the serial interface or name of the modem
ComPort	UINT	9	Number of the serial interface.
Baudrate	UDINT	10	Baud rate of the serial interface.
Parity	SINT	11	Parity of the serial interface
ByteSize	USINT	14	Number of bits per character of the serial interface  Value = 0 if the driver cannot establish any serial connection.
StopBit	USINT	13	Number of stop bits of the serial interface.
Autoconnect	BOOL	16	TRUE, if the modem connection should be established automatically for reading/writing
PhoneNumber	STRING	17	Current telephone number
ModemHwAdr	DINT	21	Hardware address of current telephone number
RxIdleTime	UINT	18	Modem is disconnected, if no data transfer occurs for this time in seconds (s)
WriteTimeout	UDINT	19	Maximum write duration for a modem connection in milliseconds (ms).
RingCountSet	UDINT	20	Number of ringing tones before a call is accepted
ReCallIdleTime	UINT	53	Waiting time between calls in seconds (s).
ConnectTimeout	UINT	54	Time in seconds (s) to establish a connection.

## STATISTICS

Name from import	Type	Offset	Description
MaxWriteTime	UDINT	31	The longest time in milliseconds (ms) that is required for writing.
MinWriteTime	UDINT	32	The shortest time in milliseconds (ms) that is required for writing.
MaxBlkReadTime	UDINT	40	Longest time in milliseconds (ms) that is required to read a data block.
MinBlkReadTime	UDINT	41	Shortest time in milliseconds (ms) that is required to read a data block.
WriteErrorCount	UDINT	33	Number of writing errors
ReadSucceedCount	UDINT	35	Number of successful reading attempts
MaxCycleTime	UDINT	22	Longest time in milliseconds (ms) required to read all requested data.
MinCycleTime	UDINT	23	Shortest time in milliseconds (ms) required to read all requested data.
WriteCount	UDINT	26	Number of writing attempts
ReadErrorCount	UDINT	34	Number of reading errors
MaxUpdateTimeNormal	UDINT	56	Time since the last update of the priority group <b>Normal</b> in milliseconds (ms).
MaxUpdateTimeHigher	UDINT	57	Time since the last update of the priority group <b>Higher</b> in milliseconds (ms).
MaxUpdateTimeHigh	UDINT	58	Time since the last update of the priority group <b>High</b> in milliseconds (ms).
MaxUpdateTimeHighest	UDINT	59	Time since the last update of the priority group <b>Highest</b> in milliseconds (ms).
PokeFinish	BOOL	55	Goes to 1 for a query, if all current pokes were executed

## ERROR MESSAGE

Name from import	Type	Offset	Description
------------------	------	--------	-------------

ErrorTimeDW	UDINT	2	Time (in seconds since 1.1.1970), when the last error occurred.
ErrorTimeS	STRING	2	Time (in seconds since 1.1.1970), when the last error occurred.
RdErrPrimObj	UDINT	42	Number of the PrimObject, when the last reading error occurred.
RdErrStationsName	STRING	43	Name of the station, when the last reading error occurred.
RdErrBlockCount	UINT	44	Number of blocks to read when the last reading error occurred.
RdErrHwAdresse	DINT	45	Hardware address when the last reading error occurred.
RdErrDatablockNo	UDINT	46	Block number when the last reading error occurred.
RdErrMarkerNo	UDINT	47	Marker number when the last reading error occurred.
RdErrSize	UDINT	48	Block size when the last reading error occurred.
DrvError	USINT	25	Error message as number
DrvErrorMsg	STRING	30	Error message as text
ErrorFile	STRING	15	Name of error log file

### 8.5.1 additional driver variables

In addition to the standard driver variables, the driver also defines the following ones. The file S7DrvVar.DBF contains the definitions of these variables.

#### **S7DEVICE**

Offset: 1000 Type: String, Size 63, read only.

Contains the name of the selected device.

#### **S7VFD**

Offset: 1001 Type: String, Size 63, read only.

Contains the name of the selected VFD.

**S7EABLKLEN**

Offset: 1002 Type: Word, read only.

The currently configured I/O block size.

**S7ERRRDTIMEOUT**

Offset: 1003 Type: DWORD, read only.

The currently configured read timeout.

**S7LASTERRNO**

Offset: 1004 Type: DWORD, read only.

Contains the error number of the Softnet connection.

**S7LASTERRMSG**

Offset: 1005 Type: String, Size 63, read only.

Contains the plain text for S7LastErrNo.

## 9. Driver-specific functions

The driver supports the following functions:

## 10. Driver commands

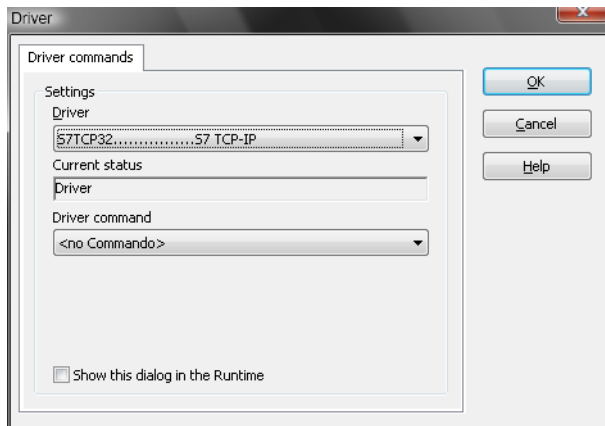
This chapter describes standard functions that are valid for most zenon drivers. Not all functions described here are available for every driver. For example, a driver that does not, according to the data sheet, support a modem connection also does not have any modem functions.

Driver commands are used to influence drivers using zenon; start and stop for example. The engineering is implemented with the help of function **Driver commands**. To do this:

- create a new function



- ▶ select *Variables -> Driver commands*
- ▶ The dialog for configuration is opened



Parameter	Description
<b>Drivers</b>	Drop-down list with all drivers which are loaded in the project.
<b>Current status</b>	Fixed entry which has no function in the current version.
<b>Driver command</b>	Drop-down list for the selection of the command.
▶ Start driver (online mode)	Driver is reinitialized and started.
▶ Stop driver (offline mode)	Driver is stopped. No new data is accepted. <b>Note:</b> If the driver is in offline mode, all variables that were created for this driver receive the status switched off (OFF; Bit 20).
▶ Driver in simulation mode	Driver is set into simulation mode. The values of all variables of the driver are simulated by the driver. No values from the connected hardware (e.g. PLC, bus system, ...) are displayed.
▶ Driver in hardware mode	Driver is set into hardware mode. For the variables of the driver the values from the connected hardware (e.g. PLC, bus system, ...) are displayed.
▶ Driver-specific command	Enter driver-specific commands. Opens input field in order to enter a command.
▶ Driver - activate set setpoint value	Write set value to a driver is allowed.
▶ Driver - deactivate set setpoint value	Write set value to a driver is prohibited.
▶ Establish connecton with modem	Establish connection (for modem drivers) Opens the input fields for the hardware address and for the telephone number.
▶ Disconnect from modem	Terminate connection (for modem drivers)

<b>Show this dialog in the Runtime</b>	The dialog is shown in Runtime so that changes can be made.
--	---

## DRIVER COMMANDS IN THE NETWORK

If the computer, on which the **driver command** function is executed, is part of the zenon network, additional actions are carried out. A special network command is sent from the computer to the project server, which then executes the desired action on its driver. In addition, the Server sends the same driver command to the project standby. The standby also carries out the action on its driver.

This makes sure that Server and Standby are synchronized. This only works if the Server and the Standby both have a working and independent connection to the hardware.

# 11. Error analysis

Should there be communication problems, this chapter will assist you in finding out the error.

## 11.1 Analysis tool

All zenon modules such as Editor, Runtime, drivers, etc. write messages to a joint log file. To display them correctly and clearly, use the Diagnosis Viewer (main.chm::/12464.htm) program that was also installed with zenon. You can find it under *Start/All programs/zenon/Tools 7.60 -> Diagviewer*.

zenon driver log all errors in the LOG files. LOG files are text files with a special structure. The default folder for the LOG files is subfolder **LOG** in the folder **ProgramData**. For example:

**%ProgramData%\COPA-DATA\LOG.**

**Attention:** With the default settings, a driver only logs error information. With the Diagnosis Viewer you can enhance the diagnosis level for most of the drivers to "Debug" and "Deep Debug". With this the driver also logs all other important tasks and events.

In the Diagnosis Viewer you can also:

- ▶ Follow newly-created entries in real time
- ▶ customize the logging settings
- ▶ change the folder in which the LOG files are saved

### Note:

1. The Diagnosis Viewer displays all entries in UTC (coordinated world time) and not in local time.

2. The Diagnosis Viewer does not display all columns of a LOG file per default. To display more columns activate property **Add all columns with entry** in the context menu of the column header.
3. If you only use **Error-Logging**, the problem description is in the column **Error text**. For other diagnosis level the description is in the column **General text**.
4. For communication problems many drivers also log error numbers which the PLC assigns to them. They are displayed in **Error text** or **Error code** or **Driver error parameter (1 and 2)**. Hints on the meaning of error codes can be found in the driver documentation and the protocol/PLC description.
5. At the end of your test set back the diagnosis level from **Debug** or **Deep Debug**. At **Debug** and **Deep Debug** there are a great deal of data for logging which are saved to the hard drive and which can influence your system performance. They are still logged even after you close the Diagnosis Viewer.



#### Attention

In Windows CE errors are not logged per default due to performance reasons.

You can find further information on the Diagnosis Viewer in the Diagnose Viewer (main.chm::/12464.htm) manual.

## 11.2 Check list

- ▶ Cable disconnected
- ▶ Wrong network parameters in the CP or PC.
- ▶ Data block does not exist
- ▶ CP5611 and other PCI card use the same interrupt.
- ▶ Wrong data block size (too short)
- ▶ Too slow: Scattered data areas increase update time.
- ▶ Maybe try deleting and reloading the driver (if no "CREF" connection are displayed)