

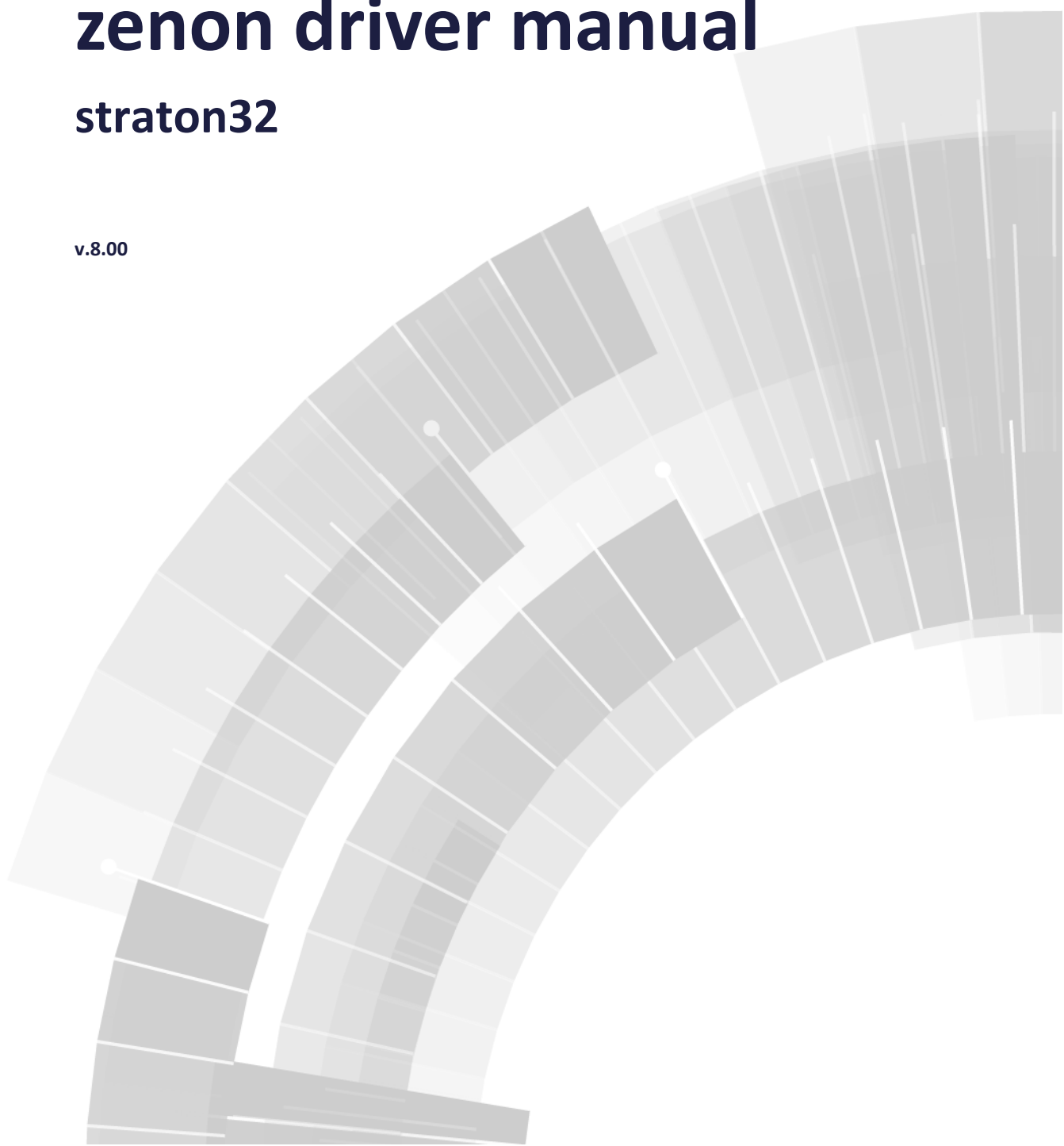


**COPADATA**  
do it your way

# zenon driver manual

## straton32

v.8.00





©2018 Ing. Punzenberger COPA-DATA GmbH

All rights reserved.

Distribution and/or reproduction of this document or parts thereof in any form are permitted solely with the written permission of the company COPA-DATA. Technical data is only used for product description and are not guaranteed qualities in the legal sense. Subject to change, technical or otherwise.

# Contents

<b>1. Welcome to COPA-DATA help .....</b>	<b>4</b>
<b>2. straton32 .....</b>	<b>4</b>
<b>3. STRATON32 - Data sheet.....</b>	<b>5</b>
<b>4. Driver history .....</b>	<b>6</b>
<b>5. Configuration .....</b>	<b>7</b>
5.1 Creating a driver.....	8
5.2 Settings in the driver dialog .....	11
5.2.1 General .....	12
5.2.2 Settings.....	16
<b>6. Creating variables.....</b>	<b>18</b>
6.1 Creating variables in the Editor.....	18
6.2 Addressing.....	20
6.3 Driver objects and datatypes .....	23
6.3.1 Driver objects .....	23
6.3.2 Mapping of the data types .....	24
6.4 Creating variables by importing.....	26
6.4.1 XML import.....	26
6.4.2 DBF Import/Export .....	27
6.5 Communication details (Driver variables).....	33
<b>7. Driver-specific functions .....</b>	<b>38</b>
<b>8. Driver command function .....</b>	<b>40</b>
<b>9. Error analysis.....</b>	<b>43</b>
9.1 Analysis tool .....	43
9.2 Check list .....	44

# 1. Welcome to COPA-DATA help

## ZENON VIDEO-TUTORIALS

You can find practical examples for project configuration with zenon in our YouTube channel ([https://www.copadata.com/tutorial\\_menu](https://www.copadata.com/tutorial_menu)). The tutorials are grouped according to topics and give an initial insight into working with different zenon modules. All tutorials are available in English.

## GENERAL HELP

If you cannot find any information you require in this help chapter or can think of anything that you would like added, please send an email to [documentation@copadata.com](mailto:documentation@copadata.com).

## PROJECT SUPPORT

You can receive support for any real project you may have from our Support Team, who you can contact via email at [support@copadata.com](mailto:support@copadata.com).

## LICENSES AND MODULES

If you find that you need other modules or licenses, our staff will be happy to help you. Email [sales@copadata.com](mailto:sales@copadata.com).

# 2. straton32

This driver allows to connect to a straton PLC via an Ethernet connection.



### Information

*Array variables that are based on the straton32 driver must not start with 1. This means: A zenon array with dimensions 1, 2, 2 is created as a simple variable in zenon Logic.*

### 3. STRATON32 - Data sheet

General:	
Driver file name	STRATON32.exe
Driver name	straton / zenonLogic driver
PLC types	straton / zenonLogic
PLC manufacturer	Brodersen; Wago; straton; COPA-DATA;

Driver supports:	
Protocol	TCP/IP;
Addressing: Address-based	--
Addressing: Name-based	X
Spontaneous communication	X
Polling communication	X
Online browsing	--
Offline browsing	X
Real-time capable	X
Blockwrite	X
Modem capable	--
Serial logging	--
RDA numerical	X
RDA String	--
Hysteresis	X
extended API	X

Supports status bit <b>WR-SUC</b>	X
alternative IP address	X

Requirements:	
Hardware PC	--
Software PC	--
Hardware PLC	--
Software PLC	--
Requires v-dll	--

Platforms:	
Operating systems	Windows CE 6.0, Embedded Compact 7; Windows 7, 8, 8.1, 10, Server 2008R2, Server 2012, Server 2012R2, Server 2016;
CE platforms	x86; ARM;

## 4. Driver history

Date	Driver version	Change
07.07.08	5500	Created driver documentation

### DRIVER VERSIONING

The versioning of the drivers was changed with zenon 7.10. There is a cross-version build number as of this version. This is the number in the 4th position of the file version,  
For example: **7.10.0.4228** means: The driver is for version **7.10** service pack **0**, and has the build number **4228**.

Expansions or error rectifications will be incorporated into a build in the future and are then available from the next consecutive build number.



### Example

*A driver extension was implemented in build **4228**. The driver that you are using is build number **8322**. Because the build number of your driver is higher than the build number of the extension, the extension is included. The version number of the driver (the first three digits of the file version) do not have any significance in relation to this. The drivers are version-agnostic*

## 5. Configuration

In this chapter you will learn how to use the driver in a project and which settings you can change.

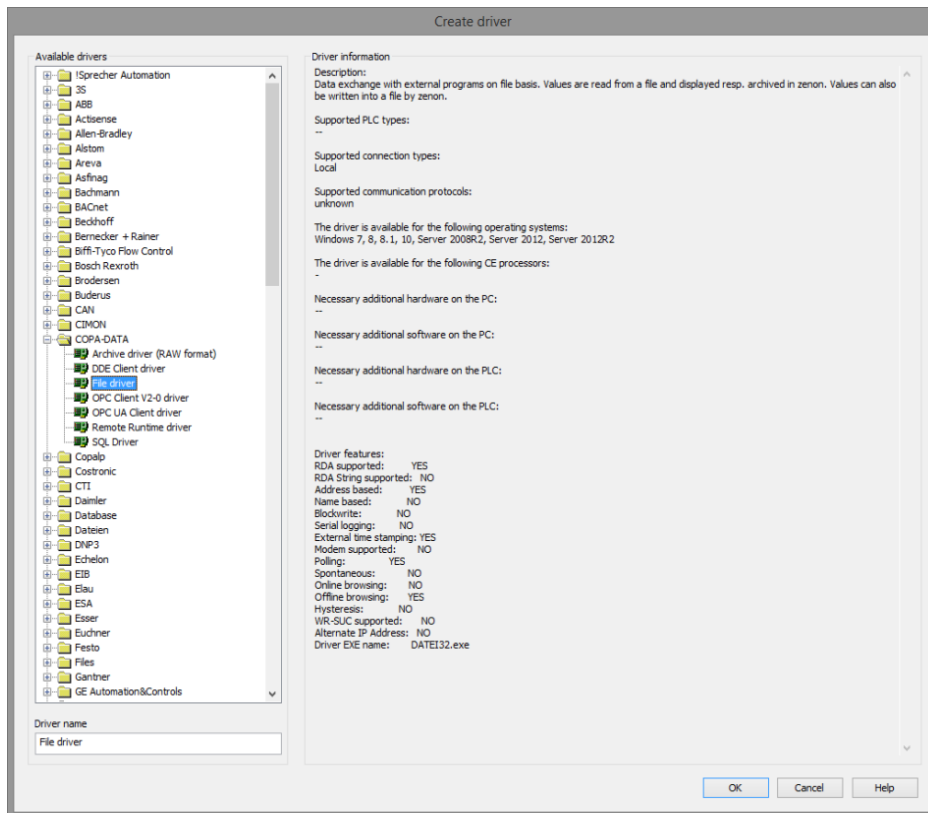


### Information

*Find out more about further settings for zenon variables in the chapter Variables (main.chm::/15247.htm) of the online manual.*

## 5.1 Creating a driver

In the **Create driver** dialog, you create a list of the new drivers that you want to create.





Parameter	Description
<b>Available drivers</b>	<p>List of all available drivers.</p> <p>The display is in a tree structure:            [+] expands the folder structure and shows the drivers contained therein.            [-] reduces the folder structure</p> <p>Default: no selection</p>
<b>Driver name</b>	<p>Unique <b>Identification</b> of the driver.</p> <p>Default: Empty</p> <p>The input field is pre-filled with the pre-defined <b>Identification</b> after selecting a driver from the list of available drivers.</p>
<b>Driver information</b>	<p>Further information on the selected driver.</p> <p>Default: Empty</p> <p>The information on the selected driver is shown in this area after selecting a driver.</p>

## CLOSE DIALOG

Option	Description
<b>OK</b>	Accepts all settings and opens the driver configuration dialog of the selected driver.
<b>Cancel</b>	Discards all changes and closes the dialog.
<b>Help</b>	Opens online help.



### Information

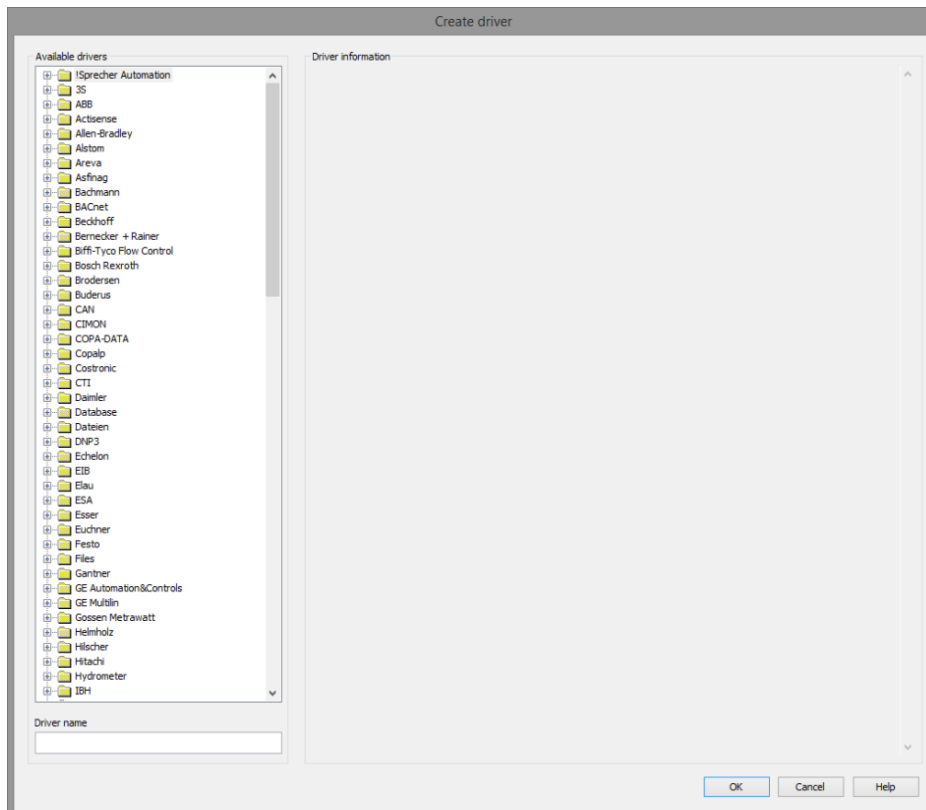
*The content of this dialog is saved in the file called `Treiber_[Language].xml`. You can find this file in the following folder: `C:\ProgramData\COPA-DATA\zenon[version number]`.*

## CREATE NEW DRIVER

In order to create a new driver:

1. Right-click on **Driver** in the Project Manager and select **New driver** in the context menu.  
Optional: Select the **New driver** button from the toolbar of the detail view of the **Variables**.  
The **Create driver** dialog is opened.

2. The dialog offers a list of all available drivers.



3. Select the desired driver and name it in the **Driver name** input field.  
This input field corresponds to the **Identification** property. The name of the selected driver is automatically inserted into this input field by default.

The following is applicable for the **Driver name**:

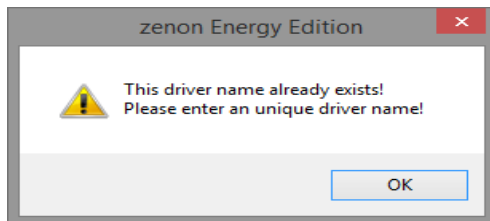
- The **Driver name** must be unique.  
If a driver is used more than once in a project, a new name has to be given each time.  
This is evaluated by clicking on the **OK** button. If the driver is already present in the project, this is shown with a warning dialog.
- The **Driver name** is part of the file name.  
Therefore it may only contain characters which are supported by the operating system.  
Invalid characters are replaced by an underscore (\_).
- **Attention:** This name cannot be changed later on.

4. Confirm the dialog by clicking on the **OK** button.  
The configuration dialog for the selected driver is opened.

**Note:** The language of driver names cannot be switched. They are always shown in the language in which they have been created, regardless of the language of the Editor. This also applies to driver object types.

## DRIVER NAME **DIALOG ALREADY EXISTS**

If there is already a driver in the project, this is shown in a dialog. The warning dialog is closed by clicking on the **OK** button. The driver can be named correctly.



## ZENON PROJECT

*The following drivers are created automatically for newly-created projects:*

- ▶ **Intern**
- ▶ **MathDr32**
- ▶ **SysDrv**



### Information

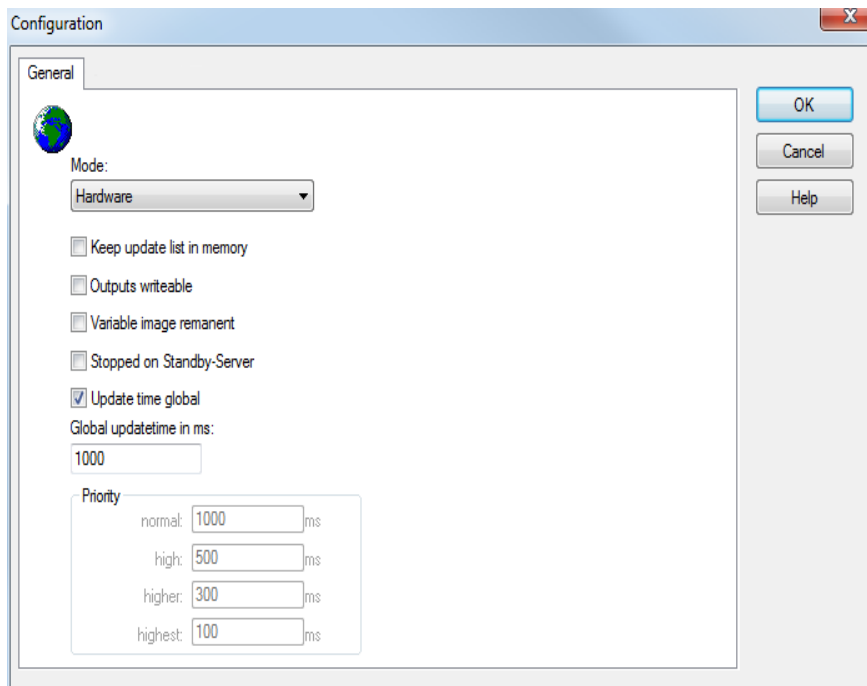
Only the required drivers need to be present in a zenon project. Drivers can be added at a later time if required.

## 5.2 Settings in the driver dialog

You can change the following settings of the driver:

### 5.2.1 General

The configuration dialog is opened when a driver is created. In order to be able to open the dialog later for editing, double click on the driver in the list or click on the **Configuration** property.



Option	Description
<b>Mode</b>	<p>Allows to switch between hardware mode and simulation mode</p> <ul style="list-style-type: none"> <li>▶ <b>Hardware:</b> A connection to the control is established.</li> <li>▶ <b>Simulation - static:</b> No communication between to the control is established, the values are simulated by the driver. In this modus the values remain constant or the variables keep the values which were set by zenon Logic. Each variable has its own memory area. E.g. two variables of the type marker with offset 79 can have different values in the Runtime and do not influence each other. Exception: The simulator driver.</li> <li>▶ <b>Simulation - counting:</b> No communication between to the control is established, the values are simulated by the driver. In this modus the driver increments the values within a value range automatically.</li> <li>▶ <b>Simulation - programmed:</b> No communication is established to the PLC. The values are calculated by a freely programmable simulation project. The simulation project is created with the help of the zenon Logic Workbench and runs in a zenon Logic Runtime which is integrated in the driver. For details see chapter Driver simulation (main.chm::/25206.htm).</li> </ul>
<b>Keep update list in the memory</b>	<p>Variables which were requested once are still requested from the control even if they are currently not needed. This has the advantage that e.g. multiple screen switches after the screen was opened for the first time are executed faster because the variables need not be requested again. The disadvantage is a higher load for the communication to the control.</p>
<b>Output can be written</b>	<ul style="list-style-type: none"> <li>▶ <b>Active:</b> Outputs can be written.</li> <li>▶ <b>Inactive:</b> Writing of outputs is prevented.</li> </ul> <p><b>Note:</b> Not available for every driver.</p>
<b>Variable image remanent</b>	<p>This option saves and restores the current value, time stamp and the states of a data point.</p> <p>Fundamental requirement: The variable must have a valid value and time stamp.</p> <p>The variable image is saved in mode hardware if:</p>

- ▶ one of the states S\_MERKER\_1(0) up to S\_MERKER8(7), REVISION(9), AUS(20) or ERSATZWERT(27) is active

The variable image is always saved if:

- ▶ the variable is of the object type **Driver variable**
- ▶ the driver runs in simulation mode. (not programmed simulation)

The following states are not restored at the start of the Runtime:

- ▶ SELECT (8)
- ▶ WR-ACK (40)
- ▶ WR-SUC (41)

The mode **Simulation - programmed** at the driver start is not a criterion in order to restore the remanent variable image.

<b>Stop on Standby Server</b>	<p>Setting for redundancy at drivers which allow only one communication connection. For this the driver is stopped at the Standby Server and only started at the upgrade.</p> <p><b>Attention:</b> If this option is active, the gapless archiving is no longer guaranteed.</p> <p>► <b>Active:</b> Sets the driver at the not-process-leading Server automatically in a stop-like state. In contrast to stopping via driver command, the variable does not receive status <b>switched off (statusverarbeitung.chm::24150.htm)</b> but an empty value. This prevents that at the upgrade to the Server irrelevant values are created in the AML, CEL and Historian.</p> <p>Default: <i>Inactive</i></p> <p><b>Note:</b> Not available if the CE terminal serves as a data server. You can find further information in the zenon Operator manual in the CE terminal as a data server chapter.</p>
<b>Global Update time</b>	<p>Setting for the global update times in milliseconds:</p> <p>► <b>Active:</b> The set <b>Global update time</b> is used for all variables in the project. The priority set at the variables is not used.</p> <p>► <b>Inactive:</b> The set priorities are used for the individual variables.</p> <p><b>Exceptions:</b> Spontaneous drivers ignore this option. They generally use the shortest possible update time. For details, see the <b>Spontaneous driver update time</b> section.</p>
<b>Priority</b>	<p>The polling times for the individual priority classes are set here. All variables with the according priority are polled in the set time.</p> <p>The variables are allocated separately in the settings of the variable properties.</p> <p>The communication of the individual variables can be graded according to importance or required topicality using the priority classes. Thus the communication load is distributed better.</p> <p><b>Attention:</b> Priority classes are not supported by each driver, e.g. spontaneously communicating zenon drivers.</p>

**CLOSE DIALOG**

Option	Description
<b>OK</b>	Applies all changes in all tabs and closes the dialog.

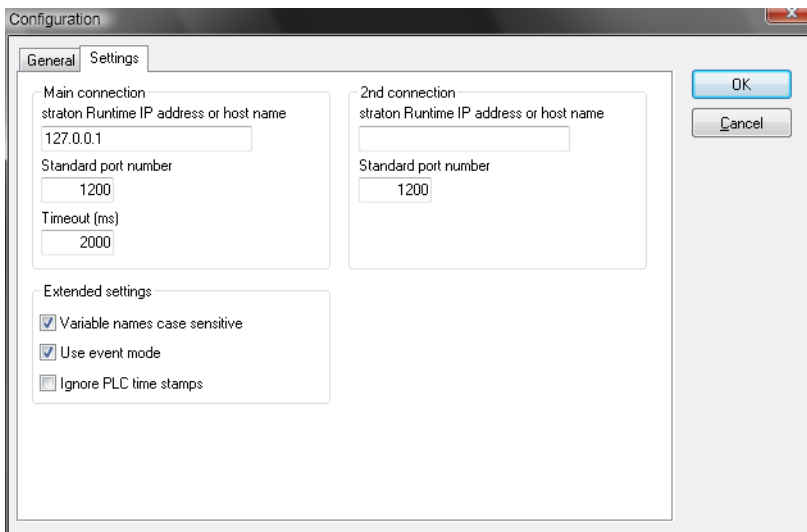
<b>Cancel</b>	Discards all changes in all tabs and closes the dialog.
<b>Help</b>	Opens online help.

## UPDATE TIME FOR SPONTANEOUS DRIVERS

With spontaneous drivers, for **Set value**, **advising** of variables and **Requests**, a read cycle is triggered immediately - regardless of the set update time. This ensures that the value is immediately available for visualization after writing. The update time is generally 100 ms.

Spontaneous drivers are **ArchDrv**, **BiffiDCM**, **BrTcp32**, **DNP3**, **Esser32**, **FipDrv32**, **FpcDrv32**, **IEC850**, **IEC870**, **IEC870\_103**, **Otis**, **RTK9000**, **S7DCOS**, **SAIA\_Slave**, **STRATON32** and **Trend32**.

### 5.2.2 Settings



Configuration

General Settings

Main connection  
straton Runtime IP address or host name  
127.0.0.1  
Standard port number  
1200  
Timeout (ms)  
2000

2nd connection  
straton Runtime IP address or host name  
Standard port number  
1200

Extended settings  
☒ Variable names case sensitive  
☒ Use event mode  
☐ Ignore PLC time stamps

OK  
Cancel



Parameter	Description
<b>zenon Logic Runtime IP address or host name</b>	IP address or PC name of the target system (PC with zenon Logic Runtime).
<b>Standard port number</b>	Standard port which is opened by the zenon Logic Runtime for communication. Generally, this is the same port as the <b>RT Port</b> of the zenon Logic project.
<b>Timeout (ms)</b>	Is not used.
<b>Variable names case sensitive</b>	<p>Active: You can also use variable in lower case writing.</p> <p><b>Hint:</b> Always activate this option. Also, in the Project Compiler of the zenon Logic Workbench, activate the option <b>Keep case of embedded symbols</b>.</p>
<b>Use event Mode</b>	<p>Active: Driver is used in spontaneous mode.</p> <p>Runtime versions prior to 6.20 do not support spontaneous mode. Therefore the option must be deactivated then.</p> <p>If event mode is activated the status bits of a zenon Logic variable (if available) are transferred to the zenon variable. Transferred are:</p> <ul style="list-style-type: none"> <li>▶ I-Bit</li> <li>▶ Bits 32 to 63</li> </ul>
<b>Ignore PLC time stamps</b>	<p>Can only be activated if <b>use event mode</b> is activated.</p> <p>Active: Time stamp is set by zenon.</p> <p>inactive: Time stamp is set by target device.</p> <p>Default: Inactive</p>
<b>2nd connection</b>	<p>Configuration of the alternative IP address analog to the first address.</p> <p>If the connection to the first IP address fails, the alternative IP address will be used after the net error waiting time has passed (20-30 sec., depending on the network). The alternative address will be kept until the driver is restarted (via driver functions or restart of the zenon Logic Runtime) or until the connection fails. Then, the first IP address will be used again.</p>

## 6. Creating variables

This is how you can create variables in the zenon Editor:

### 6.1 Creating variables in the Editor

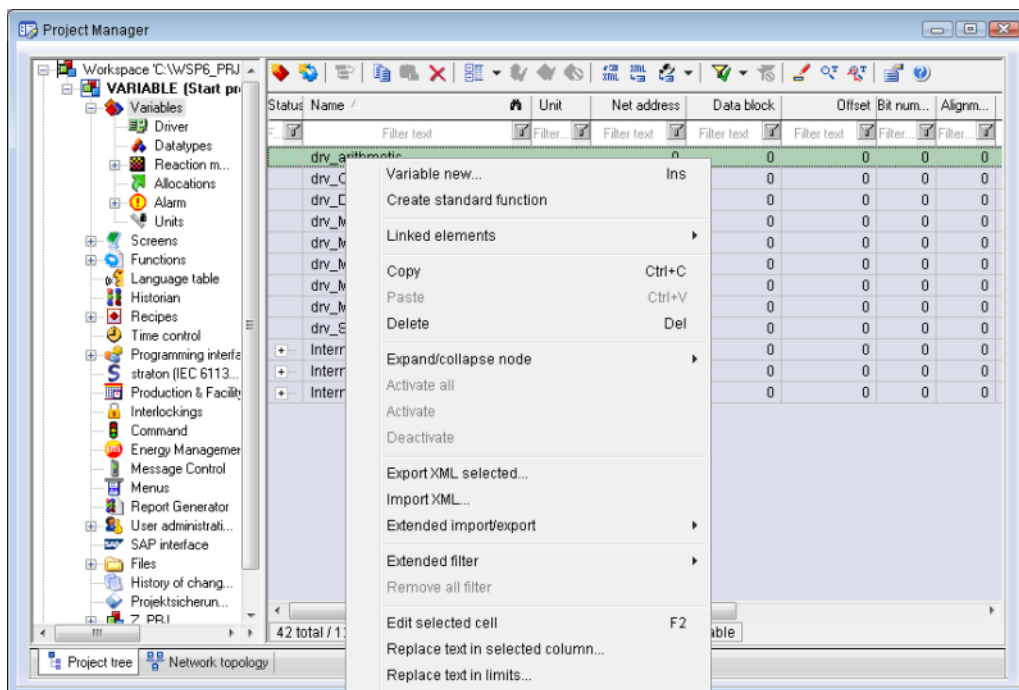
Variables can be created:

- ▶ as simple variables
- ▶ in arrays (main.chm::/15262.htm)
- ▶ as structure variables (main.chm::/15278.htm)

#### VARIABLE DIALOG

To create a new variable, regardless of which type:

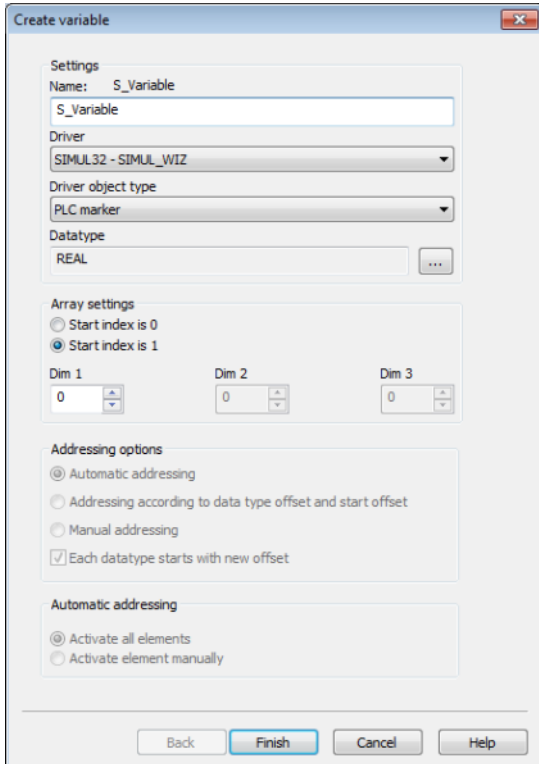
1. Select the **New variable** command in the **Variables** node in the context menu



The dialog for configuring variables is opened

2. Configure the variable

### 3. The settings that are possible depends on the type of variables



Property	Description
<b>Name</b>	<p>Distinct name of the variable. If a variable with the same name already exists in the project, no additional variable can be created with this name.</p> <p>Maximum length: 128 characters</p> <p><b>Attention:</b> The characters # and @ are not permitted in variable names. If non-permitted characters are used, creation of variables cannot be completed and the <b>Finish</b> button remains inactive.</p> <p><b>Note:</b> For some drivers, the addressing is possible over the property <b>Symbolic address</b>, as well.</p>
<b>Drivers</b>	<p>Select the desired driver from the drop-down list.</p> <p><b>Note:</b> If no driver has been opened in the project, the driver for internal variables (<b>Intern.exe (Main.chm::/Intern.chm::/Intern.htm)</b>) is automatically loaded.</p>
<b>Driver Object Type</b> (cti.chm::/28685.htm)	Select the appropriate driver object type from the drop-down list.

<b>Data Type</b>	Select the desired data type. Click on the ... button to open the selection dialog.
<b>Array settings</b>	Expanded settings for array variables. You can find details in the Arrays chapter.
<b>Addressing options</b>	Expanded settings for arrays and structure variables. You can find details in the respective section.
<b>Automatic element activation</b>	Expanded settings for arrays and structure variables. You can find details in the respective section.

## SYMBOLIC ADDRESS

The **Symbolic address** property can be used for addressing as an alternative to the **Name** or **Identification** of the variables. Selection is made in the driver dialog; configuration is carried out in the variable property. When importing variables of supported drivers, the property is entered automatically.

Maximum length: 1024 characters.

## INHERITANCE FROM DATA TYPE

**Measuring range**, **Signal range** and **Set value** are always:

- ▶ derived from the datatype
- ▶ Automatically adapted if the data type is changed

**Note for signal range:** If a change is made to a data type that does not support the set **signal range**, the **signal range** is amended automatically. For example, for a change from **INT** to **SINT**, the **signal range** is changed to 127. The amendment is also carried out if the **signal range** was not inherited from the data type. In this case, the **measuring range** must be adapted manually.

## 6.2 Addressing

Variable addressing is name-based.

The following limitations for variable names must be considered:

The following characters are not allowed in names: "(\*", "\*)", "//", "{" und "}".

Not allowed at the start of variable names: "\_\_" (=double underscore).

There are no further limitations for global variables of simple data types.

Structures and array variables must have IEC-compliant names. Exception: the structure/array names are put within curled brackets.

Example: {nonIECconform}.

The variable names must be put into curled brackets in the zenon Logic as well.

In zenon Logic, the limitation for local variables in the textbased programming languages ST(Structured Text) and IL(Instruction List) applies. Non IEC-compliant variables must be put into curled brackets as well.

**Note for straton32 driver and Runtime:** Variables with a CT segment can be given any name. No square brackets [ ] are permitted without a CT segment. Exception: The variable starts and ends with curled rackets { }.

Limitation for projects that are not integrated: If the driver has the description **STRATON:\*** or **INTERN:\***, a variable may not begin with \*/, unless the variable name is within curled brackets. (\* stands for an desired sequence.)

This note does not apply for the zenon Logic Editor!

## SETTINGS FOR THE UNIQUE ADDRESSING OF VARIABLES

Property	Description
<b>Name</b>	<p>Freely definable name.</p> <p><b>Attention:</b> For every zenon project the name must be unambiguous. If the variables are not created using the integrated solution, care must be taken to ensure that the variables are given exactly the same names as those in the zenon Logic project in which they were created (Remember case sensitivity!)</p>
<b>Identification</b>	<p>Freely definable identification. E.g. for Resources label, comments, ...</p>
<b>Net address</b>	not used for this driver
<b>Data block</b>	not used for this driver
<b>Offset</b>	not used for this driver
<b>Alignment</b>	not used for this driver
<b>Bit number</b>	not used for this driver
<b>String length</b>	<p>Only available for String variables. Maximum number of characters that the variable can take.</p> <p>Please make sure that, depending on String length, the following offsets are empty in order to prevent overlappings. A String variable requires "Number of Characters / 2" Offsets.</p>
<b>Driver connection/Driver Object Type</b>	Object type of the variables. Depending on the driver used, is selected when the variable is created and can be changed here.
<b>Driver connection/Data Type</b>	<p>Data type of the variable. Is selected during the creation of the variable; the type can be changed here.</p> <p><b>Attention:</b> If you change the data type later, all other properties of the variable must be checked and adjusted, if necessary.</p>

## DRIVER VARIABLES

Name	Offset	Type	Description
DRVVAR_STRATON_APPNAME	1000	STRING	Name of current application
DRVVAR_STRATON_STATUS	1001	DWORD (UDINT)	State of application
DRVVAR_STRATON_CURRENT_CYCLETIME	1002	DWORD (UDINT)	Current calculation time [ms]
DRVVAR_STRATON_PROGRAMMED_CYCLETIME	1003	DWORD (UDINT)	Programmed cycle time [ms]
DRVVAR_STRATON_MAXIMUM_CYCLETIME	1004	DWORD (UDINT)	Maximum calculation time [ms]

DRVVAR_STRATON_OVERFLOW_CYCLET IME	1005	DWORD (UDINT)	Number of exceeding of cycle time
---------------------------------------	------	------------------	-----------------------------------

Results of DRVVAR\_STRATON\_STATUS (Offset 1001):

Value [DWORD/DINT]	- Internal	Description
0	K5NETAPPST_RUN	Application runs
1	K5NETAPPST_STOP	Step mode Either the application is in "cycle by cycle" or "step by step" mode
2	K5NETAPPST_SFCBREAK	Reserved
3	K5NETAPPST_ERROR	Step mode concerning errors
4	K5NETAPPST_INVALID	Undefined status No application is executed on target system. Possible states: <ul style="list-style-type: none"> <li>• No working communication with the target system (e.g. failure in driver configuration)</li> <li>• The target system has no application or the application has been stopped.</li> </ul>

## 6.3 Driver objects and datatypes

Driver objects are areas available in the PLC, such as markers, data blocks etc. Here you can find out which driver objects are provided by the driver and which IEC data types can be assigned to the respective driver objects.

### 6.3.1 Driver objects

The following object types are available in this driver:

## DRIVER OBJECT TYPES AND SUPPORTED IEC DATA TYPES FOR PROCESS VARIABLES IN ZENON

Driver Object Type	Channel type	Read	Write	Supported data types	Comment
PLC marker	8	X	X	BOOL, SINT, USINT, INT, UINT, DINT, UDINT, LINT, REAL, LREAL, STRING, WORD, DWORD	
Communication details	35	X	X	BOOL, SINT, USINT, INT, UINT, DINT, UDINT, REAL, STRING	Variables for the static analysis of the communication; is transferred between driver and Runtime (not to the PLC).  <b>Note:</b> The addressing and the behavior is the same for most zenon drivers.  You can find detailed information on this in the Communication details (Driver variables) (on page 33) chapter.
RDA marker	9	X	X	DINT, UDINT, DWORD, REAL	Required for RDA function

### Key:

**X:** supported

--: not supported



### Attention

*Variables of data type LINT are not available in Windows CE.*

## 6.3.2 Mapping of the data types

All variables in zenon are derived from IEC data types. The following table compares the IEC datatypes with the datatypes of the PLC.



## MAPPING OF THE DATA TYPES FROM THE PLC TO ZENON DATA TYPES

PLC	zenon	Data type
BOOL	BOOL	8
SINT	SINT	10
USINT	USINT	9
INT	INT	1
UINT	UINT	2
DINT	DINT	3
UDINT	UDINT	4
LINT	LINT	26
ULINT	ULINT	27
REAL	REAL	5
LREAL	LREAL	6
STRING	STRING	12
BYTE	BYTE	22
WORD	WORD	23
DWORD	DWORD	24
TIME	TIME	17



### Attention

*Variables of data type LINT/ULINT are only available to a limited extent under Windows CE, because there is not 64-bit integer in the Windows CE variant.*



### Attention

*In contrast to zenon Logic, the complete value range of a LINT/ULINT is not available in zenon. Note this when configuring the project.*

*The limits of the value range in zenon are:*

*ULINT: 0 to 4.503.599.627.370.495*

*LINT: -2,251,799,813,685,248 to 2,251,799,813,685,247*



### Information

**Hint for data type *TIME*:** In zenon the unit for data type *TIME* is seconds, in zenon Logic it is milliseconds. For the communication from zenon to zenon Logic the value is multiplied by 1000. In reverse direction the value is divided by 1000. Therefore it is not possible to display the millisecond part of a zenon Logic variable of data type *TIME* in zenon.

**Data type:** The property **Data type** is the internal numerical name of the data type. It is also used for the extended DBF import/export of the variables.

## 6.4 Creating variables by importing

Variables can also be imported by importing them. The XML and DBF import is available for every driver.



### Information

You can find details on the import and export of variables in the Import-Export (main.chm::/13028.htm) manual in the Variables (main.chm::/13045.htm) section.

### 6.4.1 XML import

During XML import of variables or data types, these are first assigned to a driver and then analyzed. Before import, the user decides whether and how the respective element (variable or data type) is to be imported:

- ▶ **Import:**  
The element is imported as a new element.
- ▶ **Overwrite:**  
The element is imported and overwrites a pre-existing element.
- ▶ **Do not import:**  
The element is not imported.

**Note:** The actions and their durations are shown in a progress bar during import.

### REQUIREMENTS

The following conditions are applicable during import:

► Backward compatibility

At the XML import/export there is no backward compatibility. Data from older zenon versions cannot be taken over. The handover of data from newer to older versions is not supported.

► Consistency

The XML file to be imported has to be consistent. There is no plausibility check on importing the file. If there are errors in the import file, this can lead to undesirable effects in the project.

Particular attention must be paid to this, primarily if not all properties exist in the XML file and these are then filled with default values. E.g.: A binary variable has a limit value of 300.

► Structure data types

Structure data types must have the same number of structure elements.

Example: A structure data type in the project has 3 structure elements. A data type with the same name in the XML file has 4 structure elements. Then none of the variables based on this data type in the file are imported into the project.



### Hint

You can find further information on XML import in the **Import - Export** manual, in the **XML import (main.chm::/13046.htm)** chapter.

## 6.4.2 DBF Import/Export

Data can be exported to and imported from dBase.



### Information

Import and Export via CSV or dBase supported; no driver specific variable settings, such as formulas. Use export/import via XML for this.

### IMPORT DBF FILE

To start the import:

1. right-click on the variable list
2. in the drop-down list of **Extended export/import...** select the **Import dBase** command
3. follow the import assistant

The format of the file is described in the chapter File structure.



### Information

*Note:*

- ▶ Driver object type and data type must be amended to the target driver in the DBF file in order for variables to be imported.
- ▶ dBase does not support structures or arrays (complex variables) at import.

## EXPORT DBF FILE

To start the export:

1. right-click on the variable list
2. in the drop-down list of **Extended export/import...** select the **Export dBase...** command
3. follow the export assistant



### Attention

DBF files:

- ▶ must correspond to the 8.3 DOS format for filenames (8 alphanumeric characters for name, 3 character suffix, no spaces)
- ▶ must not have dots (.) in the path name.  
e.g. the path C:\users\John.Smith\test.dbf is invalid.  
Valid: C:\users\JohnSmith\test.dbf
- ▶ must be stored close to the root directory in order to fulfill the limit for file name length including path: maximum 255 characters

The format of the file is described in the chapter File structure.



### Information

*dBase does not support structures or arrays (complex variables) at export.*

## FILE STRUCTURE OF THE DBASE EXPORT FILE

The dBaseIV file must have the following structure and contents for variable import and export:



### Attention

dBase does not support structures or arrays (complex variables) at export.

DBF files must:

- ▶ conform with their name to the 8.3 DOS format (8 alphanumeric characters for name, 3 characters for extension, no space)
- ▶ Be stored close to the root directory (Root)

## STRUCTURE

Identification	Type	Field size	Comment
KANALNAME	Char	128	Variable name.  The length can be limited using the <b>MAX_LAENGE</b> entry in the <b>project.ini</b> file.
KANAL_R	C	128	The original name of a variable that is to be replaced by the new name entered under "VARIABLENNAME" (variable name) (field/column must be entered manually).  The length can be limited using the <b>MAX_LAENGE</b> entry in the <b>project.ini</b> file.
KANAL_D	Log	1	The variable is deleted with the 1 entry (field/column has to be created by hand).
TAGNR	C	128	Identification.  The length can be limited using the <b>MAX_LAENGE</b> entry in the <b>project.ini</b> file.
EINHEIT	C	11	Technical unit
DATENART	C	3	Data type (e.g. bit, byte, word, ...) corresponds to the data type.
KANALTYP	C	3	Memory area in the PLC (e.g. marker area, data area, ...) corresponds to the driver object type.
HWKANAL	Num	3	Net address
BAUSTEIN	N	3	Datablock address (only for variables from the data area of the PLC)
ADRESSE	N	5	Offset
BITADR	N	2	For bit variables: bit address For byte variables: 0=lower, 8=higher byte For string variables: Length of string (max. 63 characters)
ARRAYSIZE	N	16	Number of variables in the array for index variables ATTENTION: Only the first variable is fully available. All others are only available for VBA or the Recipegroup Manager

<b>LES_SCHR</b>	L	1	Write-Read-Authorization 0: Not allowed to set value. 1: Allowed to set value.
<b>MIT_ZEIT</b>	R	1	time stamp in zenon (only if supported by the driver)
<b>OBJEKT</b>	N	2	Driver-specific ID number of the primitive object comprises TREIBER-OBJEKTYP and DATENTYP
<b>SIGMIN</b>	Float	16	Non-linearized signal - minimum (signal resolution)
<b>SIGMAX</b>	F	16	Non-linearized signal - maximum (signal resolution)
<b>ANZMIN</b>	F	16	Technical value - minimum (measuring range)
<b>ANZMAX</b>	F	16	Technical value - maximum (measuring range)
<b>ANZKOMMA</b>	N	1	Number of decimal places for the display of the values (measuring range)
<b>UPDATERATE</b>	F	19	Update rate for mathematics variables (in sec, one decimal possible) not used for all other variables
<b>MEMTIEFE</b>	N	7	Only for compatibility reasons
<b>HDRATE</b>	F	19	HD update rate for historical values (in sec, one decimal possible)
<b>HDTIEFE</b>	N	7	HD entry depth for historical values (number)
<b>NACHSORT</b>	R	1	HD data as postsorted values
<b>DRRATE</b>	F	19	Updating to the output (for zenon DDE server, in [s], one decimal possible)
<b>HYST_PLUS</b>	F	16	Positive hysteresis, from measuring range
<b>HYST_MINUS</b>	F	16	Negative hysteresis, from measuring range
<b>PRIOR</b>	N	16	Priority of the variable
<b>REAMATRIZE</b>	C	32	Allocated reaction matrix
<b>ERSATZWERT</b>	F	16	Substitute value, from measuring range
<b>SOLLMIN</b>	F	16	Minimum for set value actions, from measuring range
<b>SOLLMAX</b>	F	16	Maximum for set value actions, from measuring range
<b>VOMSTANDBY</b>	R	1	Get value from standby server; the value of the variable is not requested from the server but from the Standby Server in redundant networks
<b>RESOURCE</b>	C	128	Resources label. Free string for export and display in lists.  The length can be limited using the MAX_LAENGE entry in <b>project.ini</b> .
<b>ADJWVBA</b>	R	1	Non-linear value adaption: 0: Non-linear value adaption is used

			1: Non-linear value adaption is not used
<b>ADJZENON</b>	C	128	Linked VBA macro for reading the variable value for non-linear value adjustment.
<b>ADJWVBA</b>	C	128	ed VBA macro for writing the variable value for non-linear value adjustment.
<b>ZWREMA</b>	N	16	Linked counter REMA.
<b>MAXGRAD</b>	N	16	Gradient overflow for counter REMA.



### Attention

*When importing, the driver object type and data type must be amended to the target driver in the DBF file in order for variables to be imported.*

## LIMIT VALUE DEFINITION

Limit definition for limit values 1 to 4, or status 1 to 4:

Identification	Type	Field size	Comment
<b>AKTIV1</b>	R	1	Limit value active (per limit value available)
<b>GRENZWERT1</b>	F	20	technical value or ID number of a linked variable for a dynamic limit value (see VARIABLEx) (if VARIABLEx is 1 and here it is -1, the existing variable linkage is not overwritten)
<b>SCHWWERT1</b>	F	16	Threshold value for limit value
<b>HYSTERESE1</b>	F	14	Is not used
<b>BLINKEN1</b>	R	1	Set blink attribute
<b>BTB1</b>	R	1	Logging in CEL
<b>ALARM1</b>	R	1	Alarm
<b>DRUCKEN1</b>	R	1	Printer output (for CEL or Alarm)
<b>QUITTIER1</b>	R	1	Must be acknowledged
<b>LOESCHE1</b>	R	1	Must be deleted
<b>VARIABLE1</b>	R	1	Dyn. limit value linking the limit is defined by an absolute value (see field GRENZWERTx).
<b>FUNC1</b>	R	1	Functions linking
<b>ASK_FUNC1</b>	R	1	Execution via Alarm Message List
<b>FUNC_NR1</b>	N	10	ID number of the linked function (if "-1" is entered here, the existing function is not overwritten during import)
<b>A_GRUPPE1</b>	N	10	Alarm/Event Group
<b>A_KLASSE1</b>	N	10	Alarm/Event Class
<b>MIN_MAX1</b>	C	3	Minimum, Maximum
<b>FARBE1</b>	N	10	Color as Windows coding
<b>GRENZTXT1</b>	C	66	Limit value text
<b>A_DELAY1</b>	N	10	Time delay
<b>INVISIBLE1</b>	R	1	Invisible

Expressions in the column "Comment" refer to the expressions used in the dialog boxes for the definition of variables. For more information, see chapter Variable definition.



## 6.5 Communication details (Driver variables)

The driver kit implements a number of driver variables. These variables are part of the driver object type **Communication details**. These are divided into:

- ▶ Information
- ▶ Configuration
- ▶ Statistics and
- ▶ Error message

The definitions of the variables implemented in the driver kit are available in the import file **drvvar.dbf** (on the installation medium in the \Predefined\Variables folder) and can be imported from there.

**Note:** Variable names must be unique in zenon. If driver variables of the driver object type **Communication details** are to be imported from **drvvar.dbf** again, the variables that were imported beforehand must be renamed.



### Information

*Not every driver supports all driver variables of the driver object type **Communication details**.*

*For example:*

- ▶ Variables for modem information are only supported by modem-compatible drivers
- ▶ Driver variables for the polling cycle only for pure polling drivers
- ▶ Connection-related information such as ErrorMessage only for drivers that only edit one connection at a time

## INFORMATION

Name from import	Type	Offset	Description
MainVersion	UINT	0	Main version number of the driver.
SubVersion	UINT	1	Sub version number of the driver.
BuildVersion	UINT	29	Build version number of the driver.
RTMajor	UINT	49	zenon main version number
RTMinor	UINT	50	zenon sub version number
RTSp	UINT	51	zenon Service Pack number
RTBuild	UINT	52	zenon build number
LineStateIdle	BOOL	24.0	TRUE, if the modem connection is idle
LineStateOffering	BOOL	24.1	TRUE, if a call is received
LineStateAccepted	BOOL	24.2	The call is accepted
LineStateDialtone	BOOL	24.3	Dialtone recognized
LineStateDialing	BOOL	24.4	Dialing active
LineStateRingBack	BOOL	24.5	While establishing the connection
LineStateBusy	BOOL	24.6	Target station is busy
LineStateSpecialInfo	BOOL	24.7	Special status information received
LineStateConnected	BOOL	24.8	Connection established
LineStateProceeding	BOOL	24.9	Dialing completed
LineStateOnHold	BOOL	24.10	Connection in hold
LineStateConferenced	BOOL	24.11	Connection in conference mode.
LineStateOnHoldPendConf	BOOL	24.12	Connection in hold for conference
LineStateOnHoldPendTransfer	BOOL	24.13	Connection in hold for transfer
LineStateDisconnected	BOOL	24.14	Connection terminated.
LineStateUnknow	BOOL	24.15	Connection status unknown
ModemStatus	UDINT	24	Current modem status
TreiberStop	BOOL	28	Driver stopped  For <code>driver stop</code> , the variable has the value <code>TRUE</code> and an <b>OFF</b> bit. After the driver has started, the variable has the value <code>FALSE</code> and no <b>OFF</b> bit.
SimulRTState	UDINT	60	Informs the status of Runtime for driver simulation.

ConnectionStates	STRING	61	<p>Internal connection status of the driver to the PLC.</p> <p>Connection statuses:</p> <p>0 : Connection OK</p> <p>1 : Connection failure</p> <p>2 : Connection simulated</p> <p>Formating:</p> <p>&lt;Netzadresse&gt;:&lt;Verbindungszustand&gt;;...;;</p> <p>A connection is only known after a variable has first signed in. In order for a connection to be contained in a string, a variable of this connection must be signed in once.</p> <p>The status of a connection is only updated if a variable of the connection is signed in. Otherwise there is no communication with the corresponding controller.</p>
------------------	--------	----	--

## CONFIGURATION

Name from import	Type	Offset	Description
ReconnectInRead	BOOL	27	If TRUE, the modem is automatically reconnected for reading
ApplyCom	BOOL	36	Apply changes in the settings of the serial interface. Writing to this variable immediately results in the method SrvDrvVarApplyCom being called (which currently has no further function).
ApplyModem	BOOL	37	Apply changes in the settings of the modem. Writing this variable immediately calls the method SrvDrvVarApplyModem. This closes the current connection and opens a new one according to the settings <b>PhoneNumberSet</b> and <b>ModemHwAdrSet</b> .
PhoneNumberSet	STRING	38	Telephone number, that should be used
ModemHwAdrSet	DINT	39	Hardware address for the telephone number

GlobalUpdate	UDINT	3	Update time in milliseconds (ms).
BGlobalUpdaten	BOOL	4	TRUE, if update time is global
TreiberSimul	BOOL	5	TRUE, if driver in sin simulation mode
TreiberProzab	BOOL	6	TRUE, if the variables update list should be kept in the memory
ModemActive	BOOL	7	TRUE, if the modem is active for the driver
Device	STRING	8	Name of the serial interface or name of the modem
ComPort	UINT	9	Number of the serial interface.
Baudrate	UDINT	10	Baud rate of the serial interface.
Parity	SINT	11	Parity of the serial interface
ByteSize	USINT	14	Number of bits per character of the serial interface  Value = 0 if the driver cannot establish any serial connection.
StopBit	USINT	13	Number of stop bits of the serial interface.
Autoconnect	BOOL	16	TRUE, if the modem connection should be established automatically for reading/writing
PhoneNumber	STRING	17	Current telephone number
ModemHwAdr	DINT	21	Hardware address of current telephone number
RxIdleTime	UINT	18	Modem is disconnected, if no data transfer occurs for this time in seconds (s)
WriteTimeout	UDINT	19	Maximum write duration for a modem connection in milliseconds (ms).
RingCountSet	UDINT	20	Number of ringing tones before a call is accepted
ReCallIdleTime	UINT	53	Waiting time between calls in seconds (s).
ConnectTimeout	UINT	54	Time in seconds (s) to establish a connection.

## STATISTICS

Name from import	Type	Offset	Description
MaxWriteTime	UDINT	31	The longest time in milliseconds (ms) that is required for writing.
MinWriteTime	UDINT	32	The shortest time in milliseconds (ms) that is required for writing.
MaxBlkReadTime	UDINT	40	Longest time in milliseconds (ms) that is required to read a data block.
MinBlkReadTime	UDINT	41	Shortest time in milliseconds (ms) that is required to read a data block.
WriteErrorCount	UDINT	33	Number of writing errors
ReadSucceedCount	UDINT	35	Number of successful reading attempts
MaxCycleTime	UDINT	22	Longest time in milliseconds (ms) required to read all requested data.
MinCycleTime	UDINT	23	Shortest time in milliseconds (ms) required to read all requested data.
WriteCount	UDINT	26	Number of writing attempts
ReadErrorCount	UDINT	34	Number of reading errors
MaxUpdateTimeNormal	UDINT	56	Time since the last update of the priority group <b>Normal</b> in milliseconds (ms).
MaxUpdateTimeHigher	UDINT	57	Time since the last update of the priority group <b>Higher</b> in milliseconds (ms).
MaxUpdateTimeHigh	UDINT	58	Time since the last update of the priority group <b>High</b> in milliseconds (ms).
MaxUpdateTimeHighest	UDINT	59	Time since the last update of the priority group <b>Highest</b> in milliseconds (ms).
PokeFinish	BOOL	55	Goes to 1 for a query, if all current pokes were executed

## ERROR MESSAGE

Name from import	Type	Offset	Description
------------------	------	--------	-------------

ErrorTimeDW	UDINT	2	Time (in seconds since 1.1.1970), when the last error occurred.
ErrorTimeS	STRING	2	Time (in seconds since 1.1.1970), when the last error occurred.
RdErrPrimObj	UDINT	42	Number of the PrimObject, when the last reading error occurred.
RdErrStationsName	STRING	43	Name of the station, when the last reading error occurred.
RdErrBlockCount	UINT	44	Number of blocks to read when the last reading error occurred.
RdErrHwAdresse	DINT	45	Hardware address when the last reading error occurred.
RdErrDatablockNo	UDINT	46	Block number when the last reading error occurred.
RdErrMarkerNo	UDINT	47	Marker number when the last reading error occurred.
RdErrSize	UDINT	48	Block size when the last reading error occurred.
DrvError	USINT	25	Error message as number
DrvErrorMsg	STRING	30	Error message as text
ErrorFile	STRING	15	Name of error log file

## 7. Driver-specific functions

The driver supports the following functions:

### RDA FUNCTIONALITY

The RDA archiving requires a linear memory area in the PLC, which is realized with an array of the driver object type "RDA marker" in zenon Logic. This array must contain the appropriate RDA header + archive data. In the zenon Logic, only the Index [0] of this array may be activated and marked as an RDA variable. If the array Index [0] is set to 1, the corresponding values are read out from zenon Logic.

More information about the RDA archiving can be found in the online help of zenon Logic in the chapter Archiving.

## LIMITATIONS

### ARRAYS

Arrays are allowed; you can create them in zenon Logic. Note the different handling of indices, depending on the array start of the zenon variables. This option must be selected in the dialog when a variable is created in zenon Logic.

Elements can be changed with **Array Start 0**:

	Index, e. g.:	Allocation					
zenon	[1...10]	1	2	3	4	...	10
zenon Logic	[0...9]	0	1	2	3	...	9

For the correct assignment of the elements, the following should be the case:

1. The **array start** in zenon should be set to 0
2. in zenon Logic, the **Store complex variables in separate segment** must be active

### Description:

If the **Store complex variables in separate segment** in zenon Logic is,

- ▶ active, then the variables are assigned in the driver using the variable names only. This means:
  - The variables must have the same name.
  - Arrays must start with 0 in zenon, otherwise the elements are switched.
- ▶ not active, then zenon array variables with start index 1 can be communicated correctly. Because:
  - The name of the basic variable is used for array variables.
  - The zenon offset setting is used for the index.

**Attention:** That does not work for array structures however, because only one index per variable can be saved in the offset.

This means: There are no restrictions if the **array start** in zenon is set to 0



#### Attention

*If the **Store complex variables in separate segment** option is switched off, no arrays of structures or arrays in structures are supported. The index of an array element is then read from the offset setting of the variable.*

*To do this, the following settings must have been set up:*

- ▶ The offset must be calculated automatically
- ▶ Each datatype starts at a new offset (datatypes are not packed)

## STRUCTURES

Structures are allowed. We recommend to create structure data types only in zenon Logic, even if they are only used locally in the PLC.

## VERSIONS

Due to performance issues, the zenon Logic Runtime Version 6.22 SP0 Build 2 needs the zenon Logic driver for the same or earlier zenon versions. Earlier zenon Logic Runtime versions still work with all zenon Logic drivers.

# 8. Driver command function

The zenon **Driver commands** function is to influence drivers using zenon. You can do the following with a driver command:

- ▶ Start
- ▶ Stop
- ▶ Shift a certain driver mode
- ▶ Instigate certain actions

**Attention:** The zenon **Driver commands** function is not identical to driver commands that can be executed in Runtime with Energy drivers!



### Information

*This chapter describes standard functions that are valid for most zenon drivers. However, not all functions described here are available for every driver. For example, a driver that does not, according to the data sheet, support a modem connection also does not have any modem functions.*

## CONFIGURATION OF THE FUNCTION

Configuration is carried out using the **Driver commands** function. To do this:

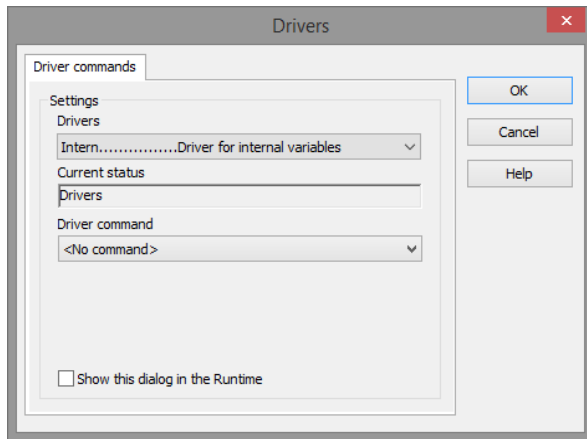
1. Create a new function in the zenon Editor.
2. Navigate to the node **Variable**.
3. Select the **Driver commands** entry.

The dialog for configuration is opened.



4. Select the desired driver and the required command.
5. Close the dialog by clicking on **OK** and ensure that the function is executed in Runtime. Heed the notices in the **Driver command function in the network** section.

#### DRIVER COMMAND DIALOG



Option	Description
<b>Drivers</b>	Selection of the driver from the drop-down list. It contains all drivers loaded in the project.
<b>Current status</b>	Fixed entry which has no function in the current version.
Driver command	Drop-down list for the selection of the command:
<No command>	No command is sent. A command that already exists can thus be removed from a configured function.
Start driver (online mode)	Driver is reinitialized and started.
Stop driver (offline mode)	Driver is stopped. No new data is accepted. <b>Note:</b> If the driver is in offline mode, all variables that were created for this driver receive the status <code>switched off (OFF; Bit 20)</code> .
Driver in simulation mode	Driver is set into simulation mode. The values of all variables of the driver are simulated by the driver. No values from the connected hardware (e.g. PLC, bus system, ...) are displayed.
Driver in hardware mode	Driver is set into hardware mode. For the variables of the driver the values from the connected hardware (e.g. PLC, bus system, ...) are displayed.
Driver-specific command	Enter driver-specific commands. Opens input field in order to enter a command.
Activate driver write set value	Write set value to a driver is allowed.
Deactivate driver write set value	Write set value to a driver is prohibited.
Establish connection with modem	Establish connection (for modem drivers) Opens the input fields for the hardware address and for the telephone number.
Disconnect from modem	Terminate connection (for modem drivers)
Driver in counting simulation mode	Driver is set into counting simulation mode. All values are initialized with 0 and incremented in the set update time by 1 each time up to the maximum value and then start at 0 again.
Driver in static simulation mode	Driver is set into counting simulation mode. All values are initialized with 0.
Driver in programmed simulation mode	Driver is set into counting simulation mode. The values are calculated by a freely-programmable simulation project. The simulation project is created with the help of the zenon Logic Workbench and runs in the zenon Logic Runtime.
<b>Show this dialog in the Runtime</b>	The dialog is shown in Runtime so that changes can be made.

## DRIVER COMMAND FUNCTION IN THE NETWORK

If the computer on which the **Driver commands** function is executed is part of the zenon network, further actions are also carried out. A special network command is sent from the computer to the project server, which then executes the desired action on its driver. In addition, the Server sends the same driver command to the project standby. The standby also carries out the action on its driver.

This makes sure that Server and Standby are synchronized. This only works if the Server and the Standby both have a working and independent connection to the hardware.

## 9. Error analysis

Should there be communication problems, this chapter will assist you in finding out the error.

### 9.1 Analysis tool

All zenon modules such as Editor, Runtime, drivers, etc. write messages to a joint log file. To display them correctly and clearly, use the Diagnosis Viewer (main.chm::/12464.htm) program that was also installed with zenon. You can find it under *Start/All programs/zenon/Tools 8.00 -> Diagviewer*.

zenon driver log all errors in the LOG files. LOG files are text files with a special structure. The default folder for the LOG files is subfolder **LOG** in the folder **ProgramData**. For example:

**%ProgramData%\COPA-DATA\LOG.**

**Attention:** With the default settings, a driver only logs error information. With the Diagnosis Viewer you can enhance the diagnosis level for most of the drivers to "Debug" and "Deep Debug". With this the driver also logs all other important tasks and events.

In the Diagnosis Viewer you can also:

- ▶ Follow newly-created entries in real time
- ▶ customize the logging settings
- ▶ change the folder in which the LOG files are saved

#### Note:

1. The Diagnosis Viewer displays all entries in UTC (coordinated world time) and not in local time.
2. The Diagnosis Viewer does not display all columns of a LOG file per default. To display more columns activate property **Add all columns with entry** in the context menu of the column header.

3. If you only use **Error-Logging**, the problem description is in the column **Error text**. For other diagnosis level the description is in the column **General text**.
4. For communication problems many drivers also log error numbers which the PLC assigns to them. They are displayed in **Error text** or **Error code** or **Driver error parameter (1 and 2)**. Hints on the meaning of error codes can be found in the driver documentation and the protocol/PLC description.
5. At the end of your test set back the diagnosis level from **Debug** or **Deep Debug**. At **Debug** and **Deep Debug** there are a great deal of data for logging which are saved to the hard drive and which can influence your system performance. They are still logged even after you close the Diagnosis Viewer.



### Attention

In Windows CE errors are not logged per default due to performance reasons.

You can find further information on the Diagnosis Viewer in the Diagnose Viewer (main.chm::/12464.htm) manual.

## 9.2 Check list

Check the following in the event of errors:

- ▶ Does the driver have the right communication parameters? (IP Address, Port)
- ▶ Does the target system support spontaneous data traffic? (Maybe deactivate Flag „Use event mode“)
- ▶ Are uncapitalized letters used in variable names?  
Check to see if:
  - In zenon, the **Variable names case sensitive** option has been activated
  - In the Project Compiler of the zenon Logic Workbench, the **Keep case of embedded symbols** option has been activated
- ▶ Was the log file analyzed with the help of the Diagnosis Viewer (on page 43)? (Which errors occurred)?

zenon driver log all errors in the LOG files. LOG files are text files with a special structure. The default folder for the LOG files is subfolder **LOG** in the folder **ProgramData**. For example:

**%ProgramData%\COPA-DATA\LOG.**

**Attention:** With the default settings, a driver only logs error information. With the Diagnosis Viewer you can enhance the diagnosis level for most of the drivers to "Debug" and "Deep Debug". With this the driver also logs all other important tasks and events. You can find more information on the Diagnosis Viewer in the Diagnosis Viewer (main.chm::/12464.htm) manual.

The following is required for further analysis of errors:

- ▶ The project backup
- ▶ LOG files

Send these to your support person after agreement with the customer service department.