

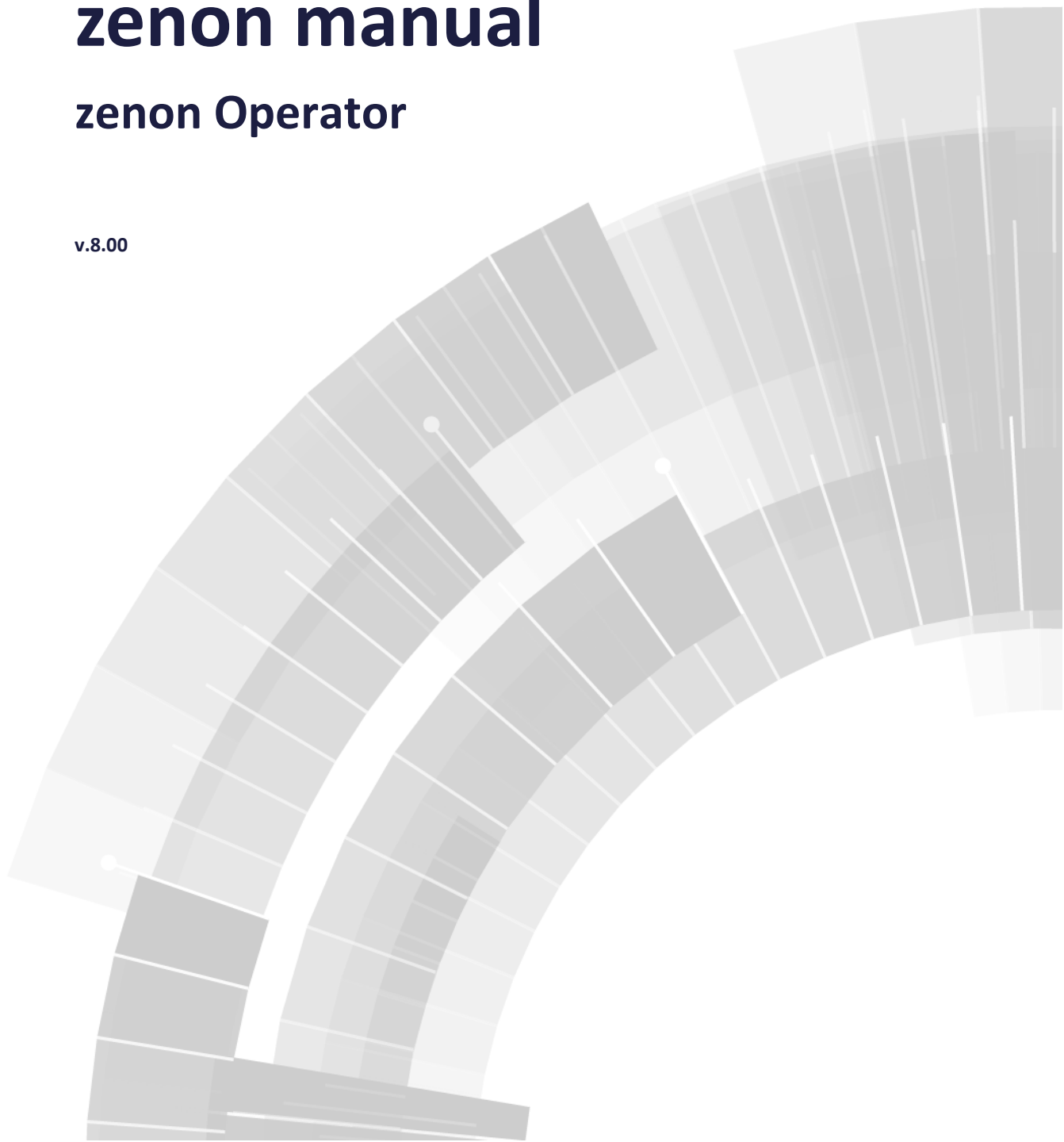


COPADATA
do it your way

zenon manual

zenon Operator

v.8.00





©2018 Ing. Punzenberger COPA-DATA GmbH

All rights reserved.

Distribution and/or reproduction of this document or parts thereof in any form are permitted solely with the written permission of the company COPA-DATA. Technical data is only used for product description and are not guaranteed qualities in the legal sense. Subject to change, technical or otherwise.

Contents

1. Welcome to COPA-DATA help	4
2. zenon Operator	4
3. Restrictions for CE version	5
4. zenon for Windows CE	11
4.1 General.....	11
4.1.1 Creating projects for CE.....	12
4.1.2 Licensing	12
4.2 Requirements.....	13
4.2.1 CE - versions and supported processors.....	14
4.3 System files	14
4.3.1 Runtime	15
4.4 Network	17
4.4.1 Network settings	18
4.4.2 CE terminal as server	19
4.4.3 CE terminal as client	22
4.4.4 Possibilities for diagnosis.....	23
4.5 Connection via Windows Mobile Device Center.....	24
4.5.1 USB connection under Windows 7	24
4.5.2 Update of the Windows CE Runtime	25
4.6 Recipegroup Manager.....	34
4.7 Transparency.....	34
4.8 Pocket PC and Windows Mobile Edition	34

1. Welcome to COPA-DATA help

ZENON VIDEO-TUTORIALS

You can find practical examples for project configuration with zenon in our YouTube channel. The tutorials are grouped according to topics and give an initial insight into working with different zenon modules. All tutorials are available in English.

GENERAL HELP

If you cannot find any information you require in this help chapter or can think of anything that you would like added, please send an email to documentation@copadata.com.

PROJECT SUPPORT

You can receive support for any real project you may have from our Support Team, who you can contact via email at support@copadata.com.

LICENSES AND MODULES

If you find that you need other modules or licenses, our staff will be happy to help you. Email sales@copadata.com.

2. zenon Operator

The zenon Operator is adapted to machine operation. It consists of Editor and Runtime. The Runtime is available for PC operating systems and CE operating systems. Windows CE is only supported up to version 7.20 inclusive. Version 7.20 is supplied and installed with the current version. Projects can still be created for Windows CE with the current version. Version 7.20 must be set for the project settings in the **Create Runtime files** for property. The property is in the project settings in the **General** group.

The principle functionality conforms with the zenon Supervisor. Towards the zenon Supervisor the Operator has functional restrictions. You can find information on the differences in the respective applicable price list.

For Windows CE there are also restrictions determined by the system.

For editing an Operator project you can either use the Editor of the zenon Operator or the Editor of the zenon Supervisor. If you engineer functionalities in the Supervisor Editor which are not available in the Operator Runtime, they are simply not executed.

3. Restrictions for CE version

VERSION DEPENDENCY

The following modules are only available from version 6.0 or higher when using Windows CE:

- ▶ Historian Starter Edition
Restrictions see manual Historian, chapter Historian Starter Edition.
- ▶ Extended Trend Starter Edition
Restrictions see manual Extended Trend.
In addition the following control elements are **not** available in CE projects:
 - Diagram button
 - Curve button
 - Chart settings
 - Print dialog
 - X axis button
 - Cursor output window
 - Filter profiles
- ▶ Recipegroup Manager

ACKNOWLEDGE ALARM STATUS LINE

In Windows CE you cannot acknowledge the alarm status line with a right click.

HISTORIAN

For archiving only the Historian Starter Edition is available for Windows CE. It has a few restrictions compared to the Historian. For details see chapter Historian Starter Edition in manual Historian.

RESOLUTION OF THE CE DEVICE AND DISPLAY OF THE CEL AND AML FILTER DIALOGS

The **Alarm administration** and the **Chronological Event List** (CEL) permit a filter selection in the Runtime. However it can only be used with a resolution of 800x600 or higher. The **Profile administration** in the corresponding screens is not available. As a consequence, the buttons **Save** and **Delete** do not work. As the **Print dialog** cannot be executed in Windows CE, the corresponding button does also no longer work.

SCREEN TYPES WHICH ARE NOT AVAILABLE:

- ▶ Variable diagnosis
- ▶ Video

USER ADMINISTRATION

Active Directory and ADAM/AD LDS are not available with Windows CE..

PRINT

There is no printer spooler available with Windows CE. The print-out is in the process. The print-out thus also blocks the functionality of Runtime.

Under Windows CE, the print function is not available if it is already included in the CE image. It cannot be subsequently added, nor expanded to further printers.

The following is applicable to printing under Windows CE:

- ▶ Online printing:
Printing is always direct to LPT1. This port must always be present on the CE device and a line printer must be connected.
- ▶ Offline printing:
Print-out is always on the standard printer configured on the system.
The printer cannot be configured from zenon Runtime and cannot be switched.

Note: In order for offline printing to work under Windows CE, the manufacturer of the device must provide it in the Windows CE image. There must also be the possibility to define the default printer, for example using applications such as Pocketword or Notepad CE.

DYNAMICS

Dynamics such as rotation, changing height and width or X and Y position are not available

DYNAMIC ELEMENTS

ACTIVEX ELEMENTS: REGISTRATION IN WINDOWS CE:

Active X – Elements must be registered before they can be used in CE. You can find help on this in the chapter entitled 'Engineering hints - Active X'.

UNIVERSAL SLIDER

The display as **Ribbon** is not available.

XAML AND WPF FILES

WPF is not available. Therefore XAML which is used as description language for WPF is not used.

FILTER IN AML AND CEL

The filters for the Alarm Message List and for the Chronological Event List cannot be engineered if property **Windows CE project** is activated. As these dialogs are very large this limitation was introduced in order to ensure the operability even on small displays (PDAs). If you create a Windows CE project without activating property **Windows CE project**, you can use the filter dialogs as usual.

FILTER PROFILES

It is not possible to work with profiles in Runtime under Windows CE.

FREELY DEFINEABLE FRAME SHAPE

For frames the **Freely defineable frame shape** is not available under Windows CE.

FUNCTIONS

SELECT PRINTER

The **Select printer** function is also available for all CE devices.

GRAPHICS

ROTATION ANGLE AND DYNAMIC POSITIONING

The property **Rotation angle** [°] and properties of the group **Size and rotation dynamic** are not available under Windows CE. Previously engineered properties are reset when the property is **Windows CE project** activated.

FILLING EFFECTS

Filling effects of static elements may be displayed differently than on a PC depending on the CE terminal.

3D FILLING PATTERNS

3D patterns are available but need more graphic resources of the CE terminals.
So they are not recommended.

GRAPHICS QUALITY

DirectX, as well as graphics functions such as shaded filling and transparency are not available under Windows CE.

Note: Transparent GIF files (on page 34) and PNG files with restrictions can be displayed.

GIF FILES

To display GIF files in Windows CE, you must make sure that file **IMGDECEMP.dll** is available on the target device. If the file is missing, you can request the **IMGDECEMP.dll** file from COPA-DATA Consulting.

LINES

Lines cannot be displayed with rounded corners. Even when the project properties under **Graphics quality** `Windows Basis` is chosen, rounded corners are not displayed under CE.

DISPLAY OF THE RECIPE NAMES

In the screen of type Recipegroup Manager the recipe names can only be displayed in a combobox. The display of the listbox (via Style L) is not supported by CE platforms.

MAIN MENUS

Under Windows CE only the standard main menus can be displayed. It is not possible to change color, font size or font type.

LICENSING (DONGLE)

Dongle licensing is not available for Windows CE, neither locally nor with a network dongle.

MULTI-PROJECT CAPABILITY

Windows CE does not offer Multi-project capability, i.e. only one project can run at a time. This is the reason why there can be no hierarchies (Integration project) in network projects. This limitation does not apply to the global project.

PROJECT SIZE

With Windows CE 6 or higher, the working memory can be used in full, but it is limited on some CE devices. This can therefore lead to memory bottlenecks, most of all if Extended Trend and Historian Starter Edition are used. Please note the 20% rule in these cases.



Information

20% Rule: With all zenon screens called up and the maximum number of alarms in the memory active, at least 20% of the working memory should still be free. If this limit is not considered, we cannot guarantee a trouble-free operation of zenon.

*The available central memory can be found out with the system driver variable **Free disk space** %.*

CROSS-REFERENCE LIST

If a button in a CE project is linked to a function, which is not available under Windows CE, it is indicated with 'Function deleted' in the Runtime.

RIGHT MOUSE BUTTON

The function for the right double-click is not available under Windows CE.

REDUNDANCY

Redundancy combined with a CE device as client is possible. Redundancy in the sense that the CE device takes over the role of the Server or the Standby Server is not possible.

WRITE SET VALUE

Set value options for elements or functions do not work with macros or programs. Set point inputs are only possible with the standard dialog box or in the element with the numerical value.

If on a CE device a set value is sent to a HD variable (e.g. with the Universal slider), a certain delay will occur, because writing on a storage card is not fast enough. Delays can also occur, if set value actions are logged in the CEL and the CEL is written to the storage card for each entry (project property).

DRIVER SIMULATION

Simulation - programmed is not available for Windows CE 6.

VECTOR ELEMENTS

ARC OF A CIRCLE

In Windows CE, the static element `Arc of circle` is only displayed correctly with a line thickness of 1.

Attention: Thicker line arcs are also not displayed correctly in network projects. The line arcs look jagged then and do not look like the ones engineered on the PC.

SEGMENT OF A CIRCLE

The static element **Segment of a circle** is not available in Windows CE.

VARIABLES

Variables of data type LINT are not available in Windows CE.

WORLDVIEW DISPLAY

The world view is not available under Windows CE due to the graphics requirements.

WMF FILES

The use of **Meta Files** (*.wmf) is not possible.

4. zenon for Windows CE

The CE Runtime of the zenon Operator can run on different CE hardware platforms. Generally, the CE version of zenon offers the same functionalities as the PC version of zenon Operator however with some limitations which result from the lower hardware resources.



Attention

*Windows CE is no longer supported from version 7.50. zenon CE version 7.20 is installed.
To use this, the Runtime files for version 7.20 must be created.*

Note: Version 7.20 must be set for the project settings of the **Create Runtime files for** property for this. The property is in the project settings in the **General** group.

You can find detailed information about the installation of the zenon and zenon Logic Runtimes for Windows CE in these chapters:

- ▶ zenon Operator Runtime for Windows CE
- ▶ zenon Logic Runtime for Windows CE

4.1 General

Windows CE is an open, scaleable platform for a great number of devices for communication, entertainment, industrial and mobile data processing. Generally speaking Windows CE is an operating system reduced to the essential, which only needs very low hardware resources. This means, that now very low-priced hardware components can be equipped with a Windows based operating system. The newly developed standard Windows CE allows the realization of novel devices which can communicate with each other, exchange information with Windows based PCs and connect to the internet.

Windows CE is a 32 bit operating system with functions such as multitasking and multithreading. Windows CE has an open structure and supports a great variety of devices. Windows CE is compact, and thus offers high performance even with limited memory.

Advantages of Windows CE are among others:

- ▶ quick boot up of the device as the operating system is unpacked in the memory for every boot up
- ▶ as no software can be installed on the CE device, there is no danger that abortive installations or viruses can influence the operating system
- ▶ high level of ruggedness as there are normally no moving parts (such as hard disks) in a CE device

Disadvantages of Windows CE are among others:

- ▶ limited functionality as not the whole Windows API (Application Programming Interface) is available
- ▶ slower read and write access on the Compact Flash card
- ▶ reduced life cycles of the storage media because of frequent access

The zenon Runtime with CE offers the same functionalities as with a PC. They are restricted (on page 5) by lesser hardware resources and limitations of the operating system.

4.1.1 Creating projects for CE

The editor is a tool to create midgets, small or medium applications as well as major projects. The projecting tool is always the same. Independent of the platform for the projects, always the full engineering comfort is available. You have full project data compatibility independent of the resolution.

Windows CE is only supported up to version 7.20 inclusive. Version 7.20 is supplied and installed with the current version. Projects can still be created for Windows CE with the current version. Version 7.20 must be set for the project settings in the **Create Runtime files for** property. The property is in the project settings in the **General** group.

CE-EDITOR

For CE projects in the Editor under -> Properties -> General check box '**Windows CE Project**' is activated. Thus only the functions which are available under Windows CE are activated. All other functions are grayed out. Excluding VBA: In the Editor VBA can be used for wizards. It cannot be used in the Runtime.

Depending on the license the Editor is limited to 8,192 TAGs.

VBA UNDER CE

In the Editor VBA can be used for wizards. It cannot be used in the Runtime.

4.1.2 Licensing

From version 8.00, licensing of Runtime for Windows CE is carried out using the **COPA-DATA License Administration**. Remote Transport is used up to version 7.60. You can find instructions in the product documentation for the corresponding version.



Attention

With the Windows Mobile Edition only roughly 800 - 1000 variables can be loaded depending on the available memory of the used device, the installed programs and the size of the project.

4.2 Requirements

Under Windows CE the control system is executable on the most different devices independent of the hardware manufacturer. For each combination of operating system and processor type, a special Runtime is required, that has to be compiled and maintained for this specific platform.

Minimum requirement for the CE device:

- ▶ 64 MB RAM memory
- ▶ 32 MB free hard disk space

As the processor speed strongly depends on the processor type, a minimum speed is hard to define. But generally we recommend, that the processor should have a minimal clock rate of 400 MHz.

Recommended:

- ▶ 128 MB RAM or more
- ▶ 64 MB or more
- ▶ Processor with 800 MHz for ARM processors or 600 MHz for x86 architecture
- ▶ Network interface



Information

Runtime and projects should be stored on a permanent writable remanent memory.

CE devices with touchscreen usually have a low screen resolution. This has to be considered when creating projects. Some dialogs, e.g. the variable selection for the standard recipes and other dialogs in the Runtime, are hard to operate or even not operable at all at a screen resolution of 320 x 240. But there is no minimal requirement in this case.

The engineering hints include a guideline for engineering low resolutions.

START RUNTIME AT THE CE PANEL

To start zenon at a CE panel, all of the required modules must be available in the image.

Should modules be missing, then after double-clicking on **zenonrce.exe** a rotating hourglass will only be shown. After the hourglass has disappeared the zenon Runtime will not be started nor will an error message will be shown.

This action shows that elements are missing in the CE operating system and that the image was not generated correctly. Contact the manufacturer of the panel to correct the error. The COPA-DATA support is happy to help the manufacturer with the error analysis.

4.2.1 CE - versions and supported processors

In the current zenon version 8.00 the following Windows CE versions and processors are supported:

- ▶ CE 6.00 for x86
- ▶ CE 6.00 for ARM V4/V5



Information

You can find information about the supported CE versions and processors for earlier zenon versions in the corresponding documentation or you can contact the COPA-DATA support.

4.3 System files

The Windows CE Runtime requires the existence of certain system files. In case one of these files is missing, the operating system sends an error message during Runtime start, that one or various components have not been found. The following system files are required:

File	Description
mfc90u.dll	Necessary for the Runtime. On startup, an error message pops up if this file does not exist.
msvcr90.dll	Necessary for the Runtime. On startup, an error message pops up if this file does not exist.
atl90.dll	Not necessary for starting the Runtime but for the use of drivers with network connections or the use of zenon in a network. If this file does not exist, the device will not work as a client or TCP/IP driver connections will not work.
IMGDECMP.dll	Not necessary for starting the Runtime but necessary for displaying Transparency (on page 34) if Alpha Blending is not integrated in the operating system. Animation of GIF files is not possible with Windows CE.
VBSCRIPT.dll + JSCRIPT.dll	Not necessary for starting the Runtime. This file is needed for the PCE (Process Control Engine).

Some of these system files are installed together with the installation of zenon for CE and can be transferred to the CE device using the **UpdateCE** Tool. All these system files should be integrated in the operating system image of the CE device by the manufacturer.



Attention

For manufactures of Windows CE OS-images:

*CE versions older than 6.0 need the file **toolhelp.dll**. Activate the following option in **Platform Manager** in order for the file to be available on the CE device and for Toolhelp to also be available in SDK.Core OS -> Display Based Device -> Core OS Services -> Debugging Tools -> Toolhelp API. Thus the Toolhelp.dll is part of the image.*

***Hint:** Always use the most up-to-date Servicepack of the **Platform Builder**.*

***Note:** File **toolhelp.dll** is not used for Windows CE 6 and should not be used with CE 6.*

4.3.1 Runtime

The Runtime for Windows CE consists of the following files:

File name	Description
zenonrCE.exe	Runtime application
Cd_tooCE.dll	Necessary for the Runtime
ZennetsrvCE.dll	The control system net service for Windows CE. Necessary for network projects.
SysSrvCE.exe	Transport service
LogCliLibCE.dll	The logserver client
zenon6.ini	Text file with settings for the Runtime like e.g. start project, language of the Runtime, etc.
UpdateCE.exe	Application, necessary for the CE Update tool.
RgermaCE.dll	German language file
RengliCE.dll	English language file
RfrancCE.dll	French language file
RitaliCE.dll	Italian language file
RrussiCE.dll	Russian language file
RspaniCE.dll	Spanish language file

Install the Runtime to the CE device with the entry CE Runtime Update-Programs (under menu **Option**).



Information

*The following is true for a connection to Windows CE 6.0 with **CX1000**, **Profibus** or **SYCONuni**: Make sure that the file **CDMemDrv.dll** has been transferred to the device. **CDMemDrv.dll** is a Windows CE device driver. The DLL is available for x86 and for ARMV4I.*

Additionally there are a number of other drivers for hardware communication. If the processor type of the CE device is recognized by the editor, the Remote Transport automatically transports the drivers used in the project to the CE device. The manner or the number of transferred files is displayed in the Output Window of the Editor.

These files always have to be compatible with the according CE version and with the according processor type. Mixing files from different CE versions or even service packs can lead to failures and unwanted side effects, and is thus not permitted.



Info

If, when starting **zenonrce.exe**, the **syssrvce.exe** file is also executed, then it can be ensured that a TCP connection can always be established. Thus only one file is necessary for the autostart functionality. However a time delay between both starts must be configured.

Reason: When starting **zenonRCE**, **zenLogSrvCE** also starts automatically. However when starting **syssrvce**, **zenLogSrvCE** is also started.

If **zenonRCE** and **syssrvce** are started within a very short period of time, both attempt to start **zenLogSrvCE**. This leads to an error message.

Solution: To avoid this, configure a time delay between the start of **zenonRCE** and **zenLogSrvCE**. To do this, you can set the **STARTDELAY=** entry in **zenon6.ini**. Runtime (**zenLogSrvCE**) is thus started later. A check is then made to see whether **zenLogSrvCE** is already running and this does not start again.

4.4 Network

Of course zenon under Windows CE can still be used in a network. The CE terminal can be a server or a client in combination with other terminals or standard PCs.

Redundancy in a network is not supported under Windows CE, i.e. a CE terminal cannot be a standby server. If however PCs are used as server and standby server, the CE terminal can connect as a client and in the case of a redundancy switch automatically connects to the current server.



Information

Multi-project functionality is not supported under Windows CE.

But several CE projects can be combined in an integration project on a PC.

If the CE Runtime should be used in a network, the following requirements have to be fulfilled:

- ▶ Network connection of the CE terminal
- ▶ TCP/IP network with full (!) Name resolution
- ▶ Unique computer name and IP address in the network
- ▶ Necessary system files and Runtime on the CE terminal (Refer to chapter "Requirements")
- ▶ Runtime license with network support on the CE terminal



Information

If a CE terminal is used in a network, no matter if server or client, on the CE terminal a Runtime license with network has to be used.

No network license is necessary for Remote Transport!

If this network license does not exist, zenon is automatically started as standalone and each CE device establishes an own connection to the PLC.

4.4.1 Network settings

As the name resolution under Windows CE does not always exist, the computer names and the IP addresses of the CE terminal and the PC have to be defined. On the PC there is the file HOSTS for this purpose; it can be found in the folder /Windows/System32/Drivers/ETC. In this file the IP address and the computer name of the CE terminal have to be entered in capitals and separated by a tabstop. For example: 192.168.0.100 WINDOWSCE2



Information

When saving the file, care that there is no file extension .txt!

The link between computer names and the IP addresses has to be defined on the PC as well as on the CE terminal, if the network does not fully support a dynamic name resolution. (In the dynamic name resolution the computer names are resolved based on the IP address). On the PC this information is stored in the HOSTS file under /Windows/system32/drivers/etc.

The operating system Windows CE does not support the functionality of a HOSTS file. The computer name and the IP address have to be entered in the `zenon6.ini` of the CE terminal, so that the name resolution also works correctly on the CE terminal. The following entry is needed:



Example

[IPADDR]

My computer name=my IP address

CE_terminal_name =CE terminal IP address

SERVERNAME=192.168.1.152

Under SERVERNAME enter the name of your server. Enter the according IP address of your server.

Example: Your server is PC0815 and has the IP address 192.52.9.32, so you enter:

PC0815=192.52.9.32

Write the computer name in CAPITAL LETTERS.

Other examples

[IPADDR]

WINDOWSCE2=192.168.0.100

PC1=192.168.0.1

If the CE terminal does not know its own name, it also has to be entered here.



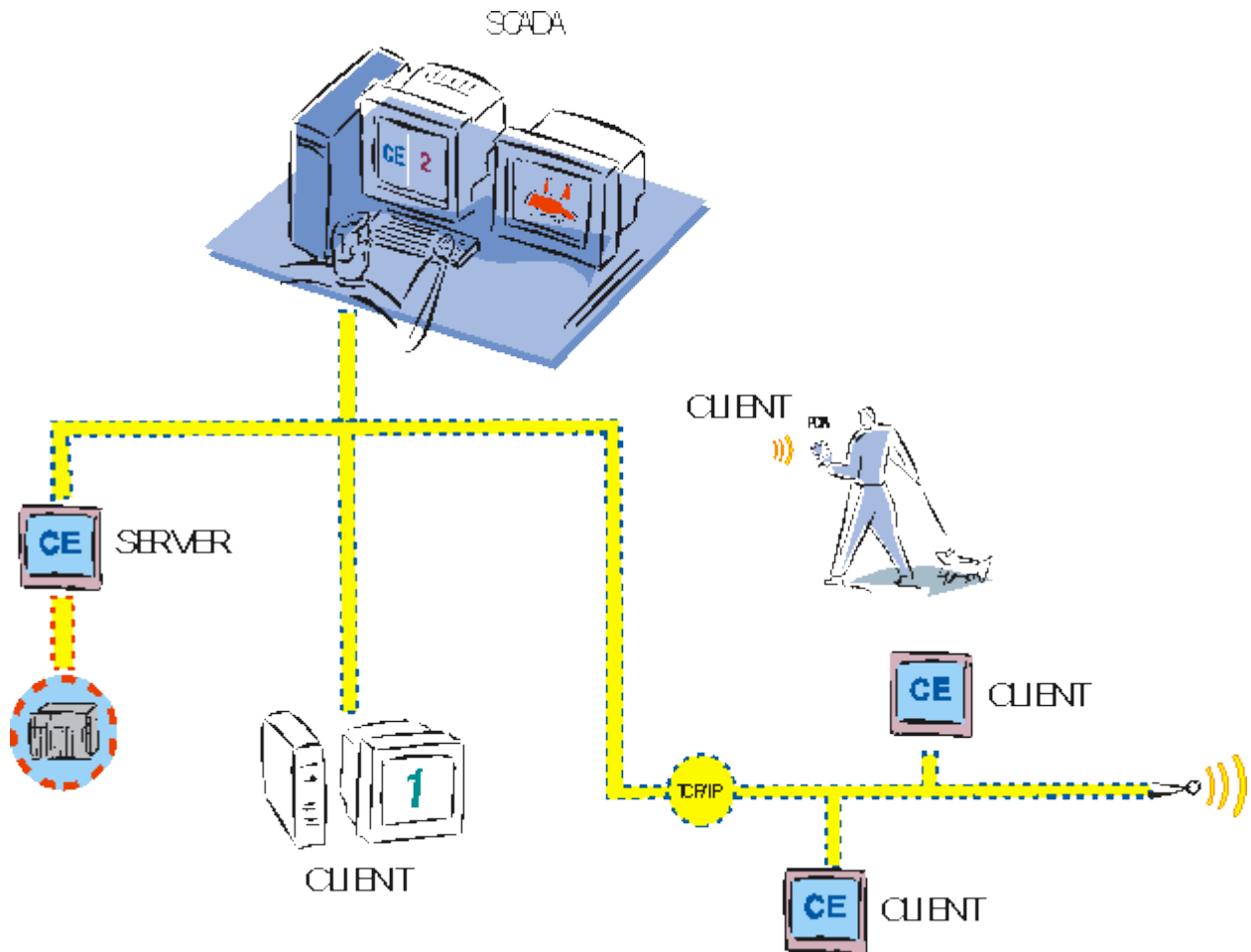
Attention

Do not use dynamic IP addresses, if there is no name resolution in the network.

4.4.2 CE terminal as server

In this constellation the project on the CE terminal is a server project (with limited functionality). All other computers, which connect to the terminal, are clients (PC clients, CE clients and Web clients are possible).

Used drivers are started on the CE terminal. As a CE terminal is used as the server, the functionality is also limited on the PC clients. The use of a CE terminal as a standby server is, as already mentioned, not possible.



THIS MODEL HAS THE FOLLOWING CHARACTERISTICS:

The CE project still has a limited functionality, i.e. no data archiving and no optional modules are available.

The CE terminal sends process data to all connected clients. Alarm administration, REMAs, mathematical calculations are handled on the CE terminal.

With many connected clients the CE terminal has to cope with rather heavy network load, which of course is not good for the performance of the CE terminal.

ENGINEERING THE CE TERMINAL AS A SERVER IN PRACTICE:

In order to be able to define the CE terminal as a server, the computer name of the CE terminal has to be entered as the server in the project configuration. Make sure, that the name is entered in capitals.

After you have finished the project, you have to transport the Runtime files to the server (CE terminal) with Remote Transport. Then one time you have to transport the Runtime files to all clients.

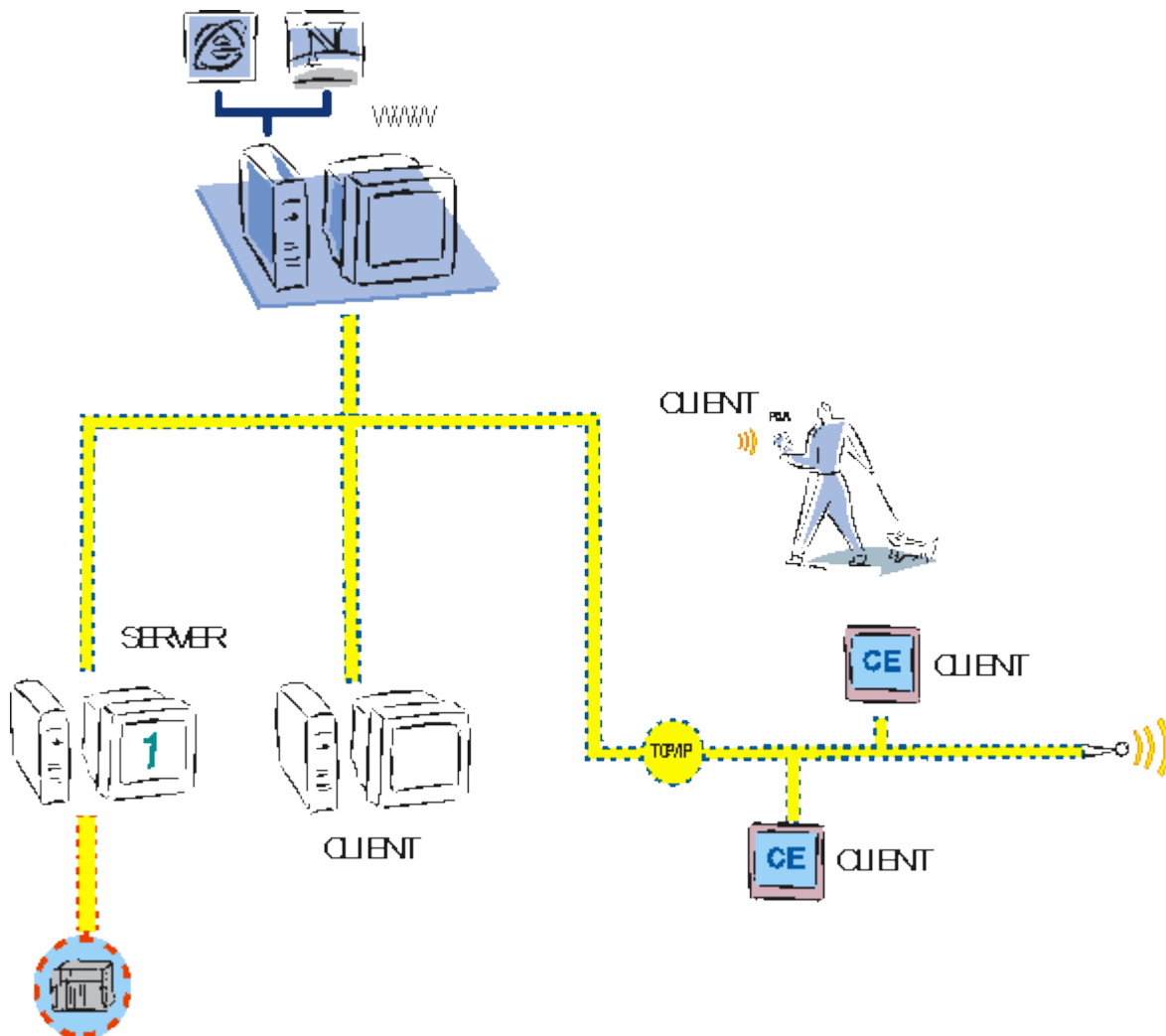
For the whole system only one single project has to be created. Future project changes only have to be transported to the server. In the case of project changes all clients get the new project data.

In the project only functionality supported on the CE terminal should be used. The option CE project is a useful tool for this purpose. It avoids, that you use modules (screens, functions, etc.), which are not supported under Windows CE.

In order to allow data archiving, the use of modules such as the extended trend or the Report Generator, and provide a number of clients with data without a performance loss on the operating terminal in spite of using Windows CE, the following second possibility was implemented:

4.4.3 CE terminal as client

Here the project on the CE terminal is *not* a server project. So the project on the CE terminal connects to a server as a client. This server can be a PC as well as another CE terminal.



THIS MODEL HAS THE FOLLOWING CHARACTERISTICS:

The CE project on the client has limited functionality, i.e. on the CE client only functionality supported by CE is available. Archives, extended Trend, Reports, etc. are not available. The project on the server however can contain such elements, if the server is a PC. On a PC client - if licensed - the full project is available. In order not to confuse the user the system offers the option: Visible under CE. If this checkbox is not activated, the according element is not displayed on the CE terminal.

The network load on the CE client is negligible, because there is always only one connection - that to the server. The drivers in this case are started at the server.

ENGINEERING THE CE TERMINAL AS A CLIENT:

For the whole system only one single project has to be created. This project runs on the server, which administers all data.

Engineering is done on the PC and the created Runtime files are transported to the server and the clients with Remote Transport.

If later changes in the project are done, the changed files have to be transported to the server with Remote Transport. The clients will update the changes after executing the function Reload project online.

The option CE project does not have to be activated. Thus the entire functionality of zenon is available for the project. As only a limited functional range is available on the CE side, functions that are not supported under CE will not be executed there (modules, special functions, etc.).

In order not to confuse the operating personnel by offering them screens and elements on the CE terminal, which will not work or are not supported there, for screens and elements the option Visible under CE can be used in the Editor. So the implementing engineer has the possibility to realize his project in the way, that a part of it is available under CE and another part only on the PC (PC server, other clients, ...).

4.4.4 Possibilities for diagnosis

CE TERMINAL AS SERVER

In order to make sure, that the CE terminal really works as a server, you can try the delete a driver used in the project with the Explorer on the CE terminal, while the Runtime is running. If this is possible, then Runtime on the CE terminal does not run as a server (applications opened exclusively cannot be deleted). It is possible that the CE terminal does not know its correct name or Runtime on the CE terminal does not have a network license.

CE TERMINAL AS CLIENT

If the client cannot establish a connection to the server, this is indicated with blue squares on the dynamic elements. The option Display status has to be activated for the elements in the properties window.

SYSTEM DRIVER

The system driver offers a variety of variables for network diagnosis.

MISC.

If the CE terminal is used in a network, it should be possible to establish a connection to the CE terminal by using the command: "telnet **COMPUTER NAME** 1100" in the command box. (Cursor flashing in the top left corner). Runtime has to be started on the CE terminal.

COMPUTER NAME here means the name of the CE terminal (look it up in the Control Panel); 1100 is the port for the communication of the control system network service (`zennetsrvce.dll`).

If the connection with Telnet cannot be established, either the name resolution in the network does not work, or the Runtime on the CE terminal has no network licence, or the system file `ATLCEX00.dll` does not exist on the terminal.

The file `zennetsrvce.dll` for the respective platform is automatically transported to the CE terminal by Remote Transport (Remote transport all Runtime files). If this is not the case, the Runtime files for CE probably are not installed on the terminal. If in the Editor menu Option the command CE Runtime Update exists, the Runtime files for CE are installed.

If it happens, that sometimes one and sometimes another client connects, the reason might be, that both CE terminals have the same computer name. Windows CE does not generate an error message, if a computer name already is used in the network.

4.5 Connection via Windows Mobile Device Center

With the help of the Microsoft program **Windows Mobile Device Center** you can establish a connection between an industrial CE terminal and a PC.

4.5.1 USB connection under Windows 7

At a USB connection between the CE device and a computer under Windows 7:

1. make sure that a connection to the Internet is possible
2. connect both devices via USB cable
3. at an existing internet connection the **Windows Mobile Device Center** is installed automatically and the connection is established
4. You can transfer data as described in chapter Update of Windows CE Runtime (on page 25).



Information

If there is no active Internet connection at the USB connection, there is no automatic installation and configuration. In this case:

- ▶ establish the Internet connection
- ▶ go to the Device Manager in the Control Panel
- ▶ right click on the unknown device
- ▶ select update driver software
- ▶ Windows installs the drivers
- ▶ Windows installs the Windows Mobile Adapter and with this the Windows Mobile Device Center

4.5.2 Update of the Windows CE Runtime

To perform an update of Windows CE Runtime:

- ▶ Make sure that the zenon Transport Service (**SysSrvCE.exe**) runs in the CE device
- ▶ Make sure that you do not have established a remote connection via the zenon Editor to the device
- ▶ In the zenon **Extras** menu, select the **Update Windows CE Runtime** command.

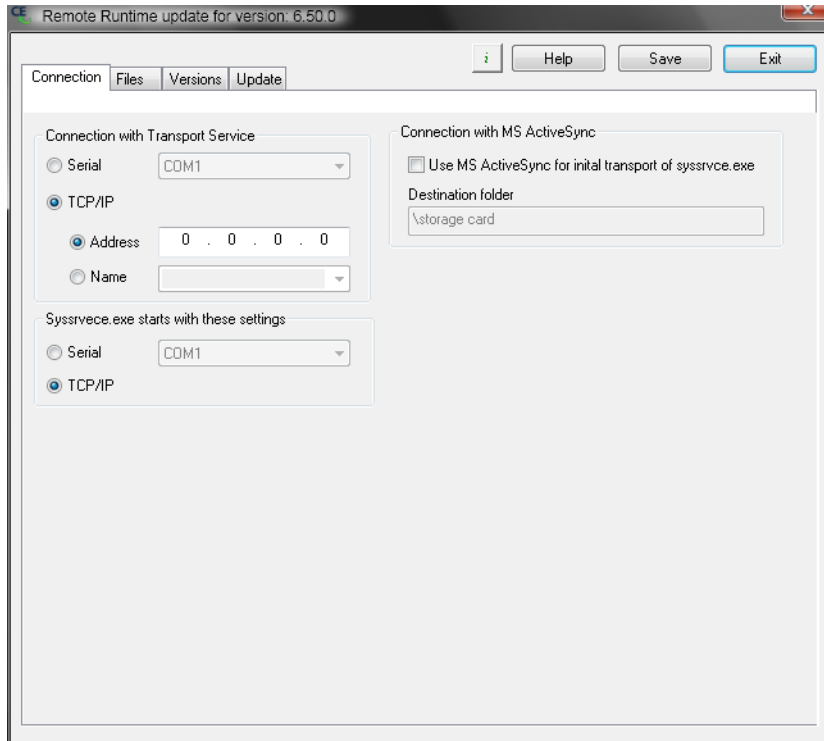
The dialog for transfer of Runtime files opens.

- ▶ Configure the connection.
- ▶ Define the data you want to transfer.
- ▶ Select the appropriate version.
- ▶ Start the update.

Note: If you are transferring/installing Runtime for the first time, note the information in the **Manual installation and Runtime update** chapter.

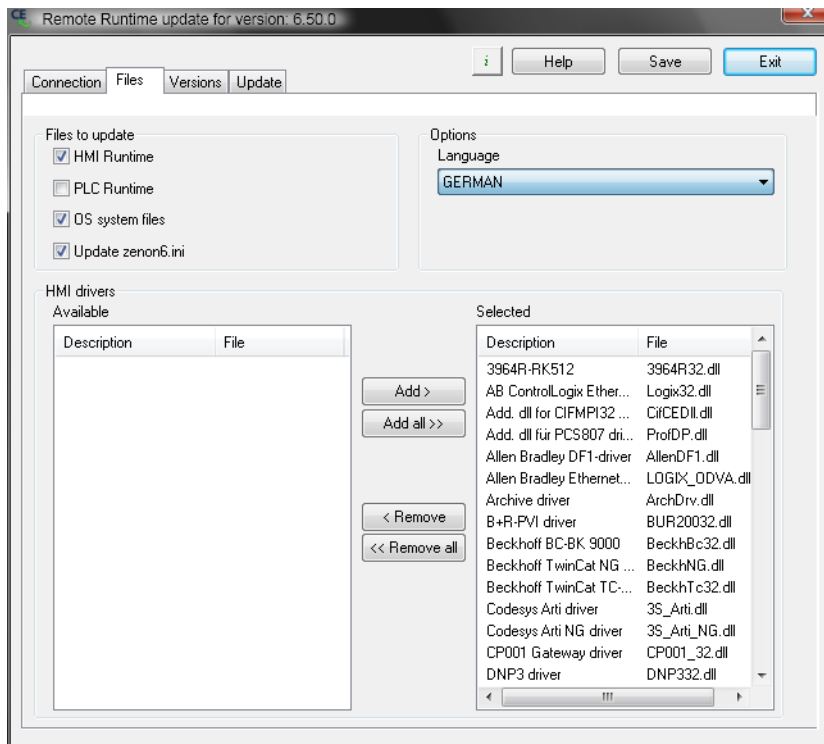
CONFIGURE CONNECTION

You can configure the connections to the Windows CE device in the tab **Connection**.



Parameter	Description
Serial	Settings for serial connection with Windows CE device, you have to select a port.
TCP/IP	Settings for TCP/IP-connection to the Windows CE device.
Adress	IP address.
Name	Computer name
Syssrvce.exe starts with these settings	Settings for starting syssrvce.exe .
Serial	Active:: serial connection selected, port must be selected.
TCP/IP	Active: TCP/IP-connection selected.
Connection with MS ActiveSync	Settings for connection via MS ActiveSync
Use MS ActiveSync for initial transport of syssrvce.exe	Active: syssrvce.exe is transferred during the first transport via MS ActiveSync.
Destination folder	Target folder.
Help	Opens online-help
Save	Saves all changes.
Exit	Closes the update CE-tool and reminds you before to save unsaved changes.

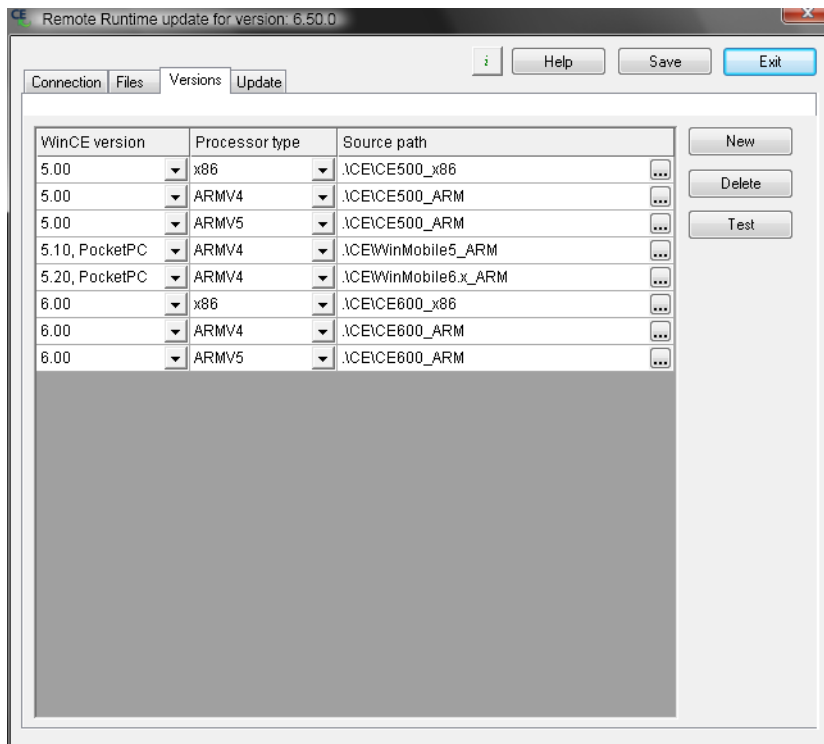
DEFINE FILES YOU WANT TO TRANSFER



Parameter	Description
Files to update	Files to be transferred.
HMI Runtime	Active: Transfers zenon files to the target device. Default: active
PLC Runtime	Active: Transfers zenon Logic files to the target device. Default: Inactive
OS system files	Active: Transfers necessary files for the OS. Default: active
Update zenon6.ini	Transfers zenon6.ini to the target device. This way, the license information of the target device is also changed.
Options	
Language	Desired target system language. Default: English
HMI drivers	Selection of HMI drivers for transfer.
Available	List of available drivers.
Selected	List of selected drivers.
Add	Adds chosen drivers to the list of selected drivers.
Add all	Adds all drivers to the list of selected drivers.
Remove	Removes chosen drivers from the list of selected drivers.
Remove all	Removes all drivers from the list of selected drivers.
Help	Opens online-help
Save	Saves all changes.
Exit	Closes the update CE-tool and reminds you before to save unsaved changes.

SELECT VERSION

Select the correct version in the tab **Versions** if it wasn't automatically recognized.

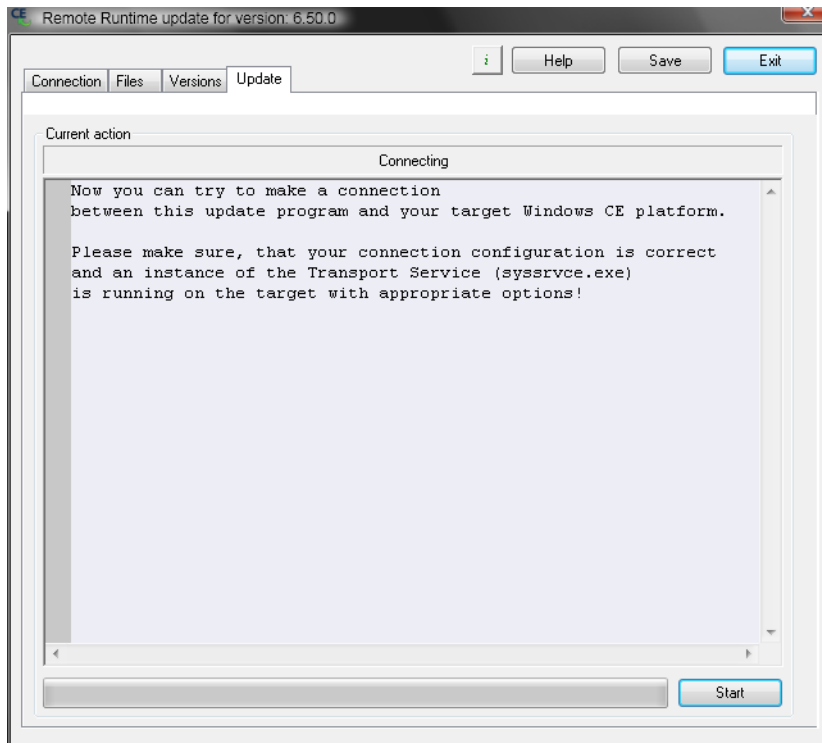


Parameter	Description
WinCE version	Version of the target device Windows CE OS. Click the button to open a drop-down list for selection.
Processor type	Processor of the device.
Source path	Path to the folder that contains the files. Click the button ... and a dialog opens to select a folder.
New	Inserts a new, empty entry in the list.
Delete	Deletes the selected entry from the list
Test	Verifies settings.
Help	Opens online-help
Save	Saves all changes.
Exit	Closes the update CE-tool and reminds you before to save unsaved changes.

START UPDATE

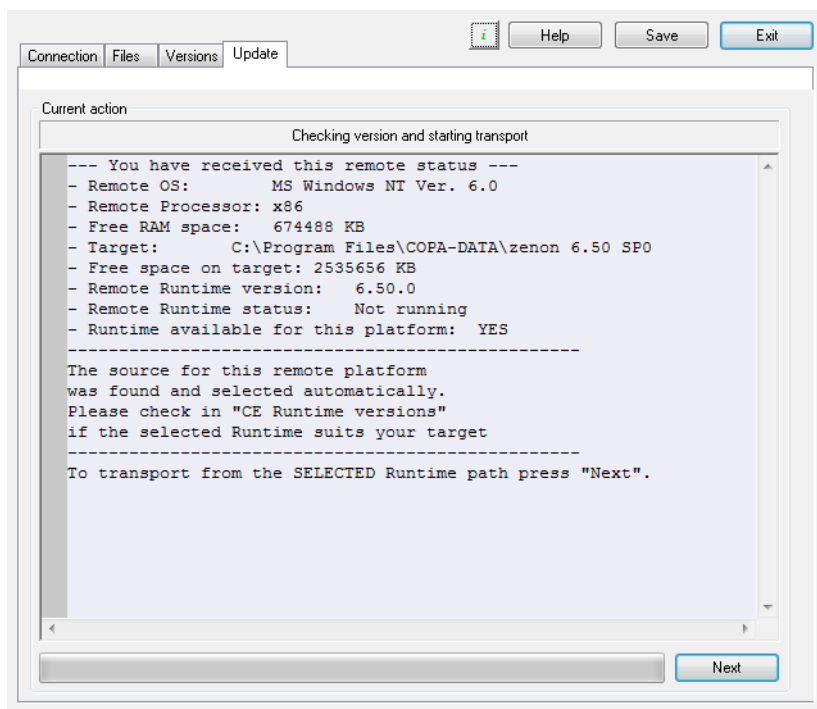
To establish a connection:

1. Click on the button **Start** on the tab **Update**.

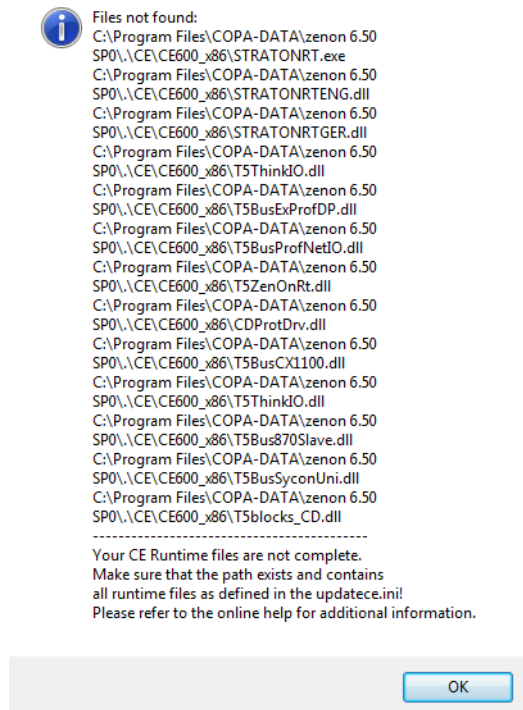


The data that shall be transferred is verified and displayed in a window.

2. Start the transfer to the target device by clicking on the button **Next**.



If the transfer cannot be initiated because files are missing, an error message with a list of missing files pops up:



If you get the error message **The current update was not completed**, the update was interrupted or not executed properly.



Information

*If you want to replace zenVNCServer.exe via update, it is terminated and restarted after the update. To do this, the **zenVNCSrvCE.exe** file must be configured in UpdateCE.ini in the [SOURCES_FILES_GENERAL] section with the following entries (present by default):*

- ▶ zenVNCSrvCE.exe
- ▶ zenVNCCfgCE.exe

4.6 Recipegroup Manager

FILTER DIALOG IN THE RUNTIME

If you activate property **Show dialog in the Runtime** at the options of the Recipe value list in the screen switch, there are only restricted options available in Windows CE:

- ▶ Recipe Filter
- ▶ Column settings (for recipe table)

Recipe selection, Equipment modeling and column settings for the **recipe list** are not available.

4.7 Transparency

In Windows CE GIF files can be displayed transparent. In contrast the transparent setting in the extended graphic functions is not available in Windows CE.

To display a transparent GIF in Windows CE:

- ▶ file IMGDECEMP.dll must be available at the target device.
If the file is missing, you can request it via support@copadata.com.
- ▶ Transparency can be either 0% or 100%. No intermediate values are possible.



Information

Transparency for PNG files from 0% to 100% in Windows CE in no part of zenon. It can however be used under certain prerequisites.

- ▶ zenon Version 6.22 SP1 or higher is not used
- ▶ **Alpha blending** must already be implemented by the manufacturer of the target device; COPA-DATA does not provide any support for this

4.8 Pocket PC and Windows Mobile Edition

If you quit zenon with **X** on a Pocket PC or on a Windows Mobile device, please notice that the application does not quit but keeps on running in the background.

In order to avoid an additional start of zenon on your device, we have created the tool `Start_CERT.exe` which brings the application into the foreground if it is already running or otherwise starts it as usual.

We recommend to start the Runtime on a Pocket PC or Windows Mobile platform by using `Start_CERT.exe` instead of a direct link.

Note: Pocket PC will not be supported for zenon version 7 and above.