



COPADATA
do it your way

zenon driver manual

Beckh_32

v.8.00





©2018 Ing. Punzenberger COPA-DATA GmbH

All rights reserved.

Distribution and/or reproduction of this document or parts thereof in any form are permitted solely with the written permission of the company COPA-DATA. Technical data is only used for product description and are not guaranteed qualities in the legal sense. Subject to change, technical or otherwise.

Contents

1. Welcome to COPA-DATA help	5
2. Beckh_32	6
3. BECKH_32 - Data sheet	6
4. Driver history	7
5. Requirements.....	8
5.1 PC	8
5.2 Control	8
6. Configuration	8
6.1 Creating a driver.....	9
6.2 Settings in the driver dialog	12
6.2.1 General	13
6.2.2 Driver dialog configuration file.....	17
6.2.3 Driver dialog Beckhoff settings.....	18
6.2.4 Driver dialog Browse	19
7. Creating variables.....	21
7.1 Creating variables in the Editor.....	21
7.2 Addressing.....	24
7.3 Driver objects and datatypes	26
7.3.1 Driver objects	26
7.3.2 Mapping of the data types	28
7.4 Creating variables by importing	28
7.4.1 XML import.....	29
7.4.2 DBF Import/Export	30
7.5 Communication details (Driver variables).....	36
8. Driver-specific functions	41
9. Driver command function	42

10. Error analysis.....	45
10.1 Analysis tool	45
10.2 Check list	46

1. Welcome to COPA-DATA help

ZENON VIDEO-TUTORIALS

You can find practical examples for project configuration with zenon in our YouTube channel (https://www.copadata.com/tutorial_menu). The tutorials are grouped according to topics and give an initial insight into working with different zenon modules. All tutorials are available in English.

GENERAL HELP

If you cannot find any information you require in this help chapter or can think of anything that you would like added, please send an email to documentation@copadata.com.

PROJECT SUPPORT

You can receive support for any real project you may have from our Support Team, who you can contact via email at support@copadata.com.

LICENSES AND MODULES

If you find that you need other modules or licenses, our staff will be happy to help you. Email sales@copadata.com.

2. Beckh_32

3. BECKH_32 - Data sheet

General:	
Driver file name	BECKH_32.exe
Driver name	Beckhoff TwinCat ADS
PLC types	TwinCat SoftPLC
PLC manufacturer	Beckhoff;

Driver supports:	
Protocol	ADS;
Addressing: Address-based	X
Addressing: Name-based	X
Spontaneous communication	--
Polling communication	X
Online browsing	X
Offline browsing	X
Real-time capable	--
Blockwrite	--
Modem capable	--
Serial logging	--
RDA numerical	X
RDA String	--
Hysteresis	--

extended API	--
Supports status bit WR-SUC	--
alternative IP address	--

Requirements:	
Hardware PC	--
Software PC	The software PLC TwinCat 2.6 or higher has to be installed on the same computer.
Hardware PLC	--
Software PLC	--
Requires v-dll	--

Platforms:	
Operating systems	Windows 7, 8, 8.1, 10, Server 2008R2, Server 2012, Server 2012R2, Server 2016;
CE platforms	-;

4. Driver history

Date	Driver version	Change
07.07.08	1500	Created driver documentation

DRIVER VERSIONING

The versioning of the drivers was changed with zenon 7.10. There is a cross-version build number as of this version. This is the number in the 4th position of the file version,
For example: **7.10.0.4228** means: The driver is for version **7.10** service pack **0**, and has the build number **4228**.

Expansions or error rectifications will be incorporated into a build in the future and are then available from the next consecutive build number.



Example

*A driver extension was implemented in build **4228**. The driver that you are using is build number **8322**. Because the build number of your driver is higher than the build number of the extension, the extension is included. The version number of the driver (the first three digits of the file version) do not have any significance in relation to this. The drivers are version-agnostic*

5. Requirements

This chapter contains information on the requirements that are necessary for use of this driver.

5.1 PC

TwinCAT

Copy the driver file Beckh_32.EXE to the current zenon directory (unless it is already there).

5.2 Control

6. Configuration

In this chapter you will learn how to use the driver in a project and which settings you can change.

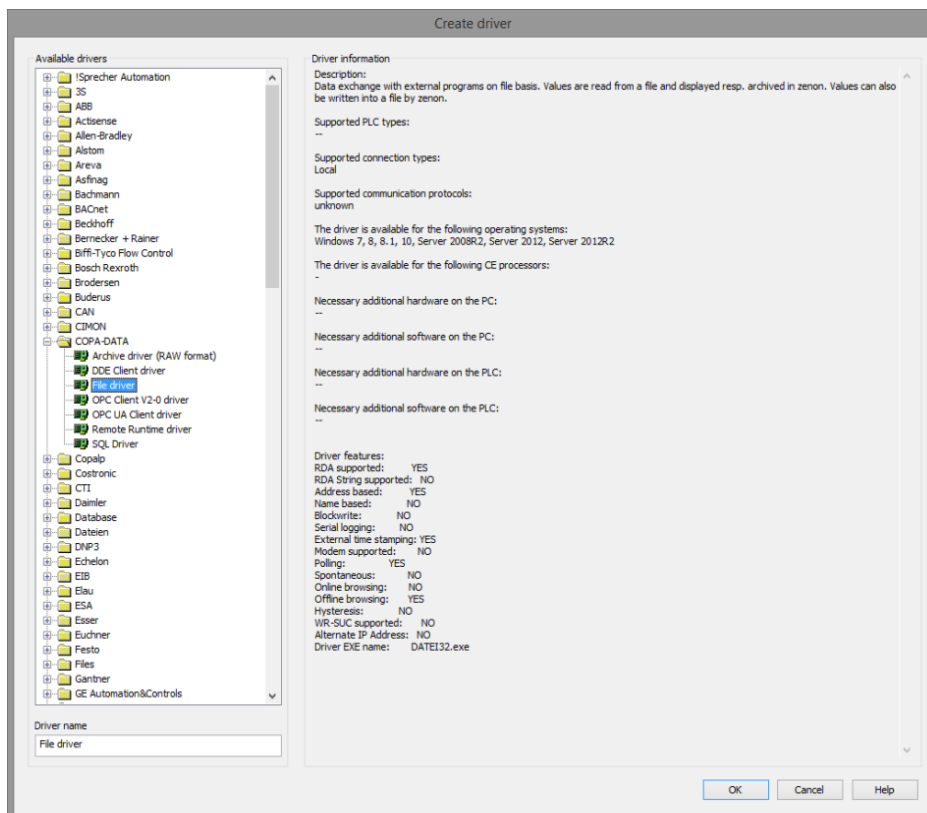


Information

Find out more about further settings for zenon variables in the chapter Variables (main.chm::/15247.htm) of the online manual.

6.1 Creating a driver

In the **Create driver** dialog, you create a list of the new drivers that you want to create.



Parameter	Description
Available drivers	<p>List of all available drivers.</p> <p>The display is in a tree structure: [+] expands the folder structure and shows the drivers contained therein. [-] reduces the folder structure</p> <p>Default: no selection</p>
Driver name	<p>Unique Identification of the driver.</p> <p>Default: Empty</p> <p>The input field is pre-filled with the pre-defined Identification after selecting a driver from the list of available drivers.</p>
Driver information	<p>Further information on the selected driver.</p> <p>Default: Empty</p> <p>The information on the selected driver is shown in this area after selecting a driver.</p>

CLOSE DIALOG

Option	Description
OK	Accepts all settings and opens the driver configuration dialog of the selected driver.
Cancel	Discards all changes and closes the dialog.
Help	Opens online help.



Information

The content of this dialog is saved in the file called `Treiber_[Language].xml`. You can find this file in the following folder: `C:\ProgramData\COPA-DATA\zenon[version number]`.

CREATE NEW DRIVER

In order to create a new driver:

1. Right-click on **Driver** in the Project Manager and select **New driver** in the context menu.
Optional: Select the **New driver** button from the toolbar of the detail view of the **Variables**.
The **Create driver** dialog is opened.

2. The dialog offers a list of all available drivers.



3. Select the desired driver and name it in the **Driver name** input field.
This input field corresponds to the **Identification** property. The name of the selected driver is automatically inserted into this input field by default.

The following is applicable for the **Driver name**:

- The **Driver name** must be unique.
If a driver is used more than once in a project, a new name has to be given each time.
This is evaluated by clicking on the **OK** button. If the driver is already present in the project, this is shown with a warning dialog.
- The **Driver name** is part of the file name.
Therefore it may only contain characters which are supported by the operating system.
Invalid characters are replaced by an underscore (_).
- **Attention:** This name cannot be changed later on.

4. Confirm the dialog by clicking on the **OK** button.
The configuration dialog for the selected driver is opened.

Note: The language of driver names cannot be switched. They are always shown in the language in which they have been created, regardless of the language of the Editor. This also applies to driver object types.

DRIVER NAME **DIALOG ALREADY EXISTS**

If there is already a driver in the project, this is shown in a dialog. The warning dialog is closed by clicking on the **OK** button. The driver can be named correctly.



ZENON PROJECT

The following drivers are created automatically for newly-created projects:

- ▶ **Intern**
- ▶ **MathDr32**
- ▶ **SysDrv**



Information

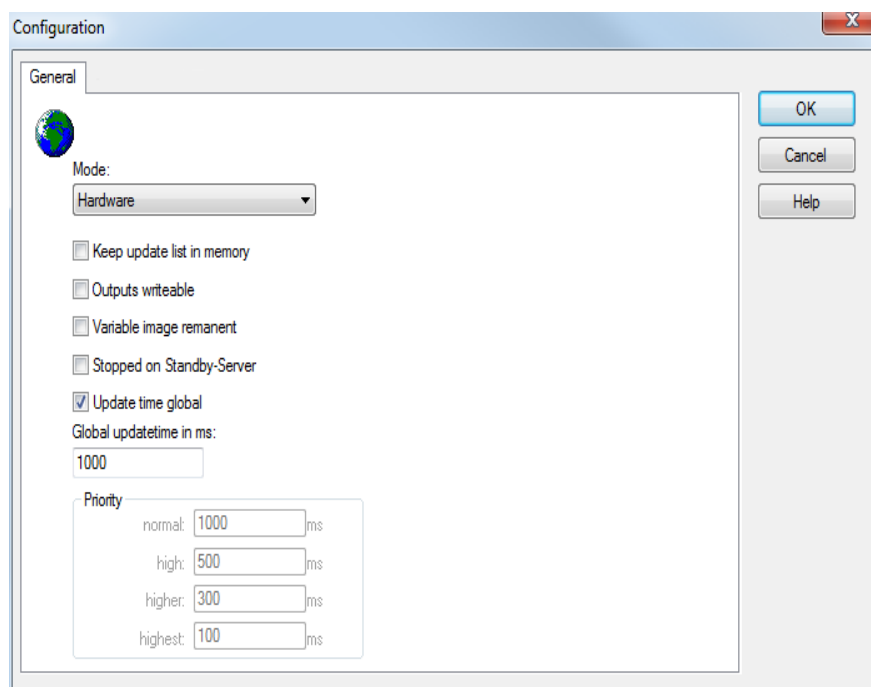
Only the required drivers need to be present in a zenon project. Drivers can be added at a later time if required.

6.2 Settings in the driver dialog

You can change the following settings of the driver:

6.2.1 General

The configuration dialog is opened when a driver is created. In order to be able to open the dialog later for editing, double click on the driver in the list or click on the **Configuration** property.



Option	Description
Mode	<p>Allows to switch between hardware mode and simulation mode</p> <ul style="list-style-type: none"> ▶ Hardware: A connection to the control is established. ▶ Simulation - static: No communication between to the control is established, the values are simulated by the driver. In this modus the values remain constant or the variables keep the values which were set by zenon Logic. Each variable has its own memory area. E.g. two variables of the type marker with offset 79 can have different values in the Runtime and do not influence each other. Exception: The simulator driver. ▶ Simulation - counting: No communication between to the control is established, the values are simulated by the driver. In this modus the driver increments the values within a value range automatically. ▶ Simulation - programmed: No communication is established to the PLC. The values are calculated by a freely programmable simulation project. The simulation project is created with the help of the zenon Logic Workbench and runs in a zenon Logic Runtime which is integrated in the driver. For details see chapter Driver simulation (main.chm::/25206.htm).
Keep update list in the memory	<p>Variables which were requested once are still requested from the control even if they are currently not needed. This has the advantage that e.g. multiple screen switches after the screen was opened for the first time are executed faster because the variables need not be requested again. The disadvantage is a higher load for the communication to the control.</p>
Output can be written	<ul style="list-style-type: none"> ▶ Active: Outputs can be written. ▶ Inactive: Writing of outputs is prevented. <p>Note: Not available for every driver.</p>
Variable image remanent	<p>This option saves and restores the current value, time stamp and the states of a data point.</p> <p>Fundamental requirement: The variable must have a valid value and time stamp.</p> <p>The variable image is saved in mode hardware if:</p>

- ▶ one of the states S_MERKER_1(0) up to S_MERKER8(7), REVISION(9), AUS(20) or ERSATZWERT(27) is active

The variable image is always saved if:

- ▶ the variable is of the object type **Driver variable**
- ▶ the driver runs in simulation mode. (not programmed simulation)

The following states are not restored at the start of the Runtime:

- ▶ SELECT (8)
- ▶ WR-ACK (40)
- ▶ WR-SUC (41)

The mode **Simulation - programmed** at the driver start is not a criterion in order to restore the remanent variable image.

Stop on Standby Server	<p>Setting for redundancy at drivers which allow only one communication connection. For this the driver is stopped at the Standby Server and only started at the upgrade.</p> <p>Attention: If this option is active, the gapless archiving is no longer guaranteed.</p> <p>► Active: Sets the driver at the not-process-leading Server automatically in a stop-like state. In contrast to stopping via driver command, the variable does not receive status switched off (statusverarbeitung.chm::/24150.htm) but an empty value. This prevents that at the upgrade to the Server irrelevant values are created in the AML, CEL and Historian.</p> <p>Default: <i>Inactive</i></p> <p>Note: Not available if the CE terminal serves as a data server. You can find further information in the zenon Operator manual in the CE terminal as a data server chapter.</p>
Global Update time	<p>Setting for the global update times in milliseconds:</p> <p>► Active: The set Global update time is used for all variables in the project. The priority set at the variables is not used.</p> <p>► Inactive: The set priorities are used for the individual variables.</p> <p>Exceptions: Spontaneous drivers ignore this option. They generally use the shortest possible update time. For details, see the Spontaneous driver update time section.</p>
Priority	<p>The polling times for the individual priority classes are set here. All variables with the according priority are polled in the set time.</p> <p>The variables are allocated separately in the settings of the variable properties.</p> <p>The communication of the individual variables can be graded according to importance or required topicality using the priority classes. Thus the communication load is distributed better.</p> <p>Attention: Priority classes are not supported by each driver, e.g. spontaneously communicating zenon drivers.</p>

CLOSE DIALOG

Option	Description
OK	Applies all changes in all tabs and closes the dialog.

Cancel	Discards all changes in all tabs and closes the dialog.
Help	Opens online help.

UPDATE TIME FOR SPONTANEOUS DRIVERS

With spontaneous drivers, for **Set value**, **advising** of variables and **Requests**, a read cycle is triggered immediately - regardless of the set update time. This ensures that the value is immediately available for visualization after writing. The update time is generally 100 ms.

Spontaneous drivers are **ArchDrv**, **BiffiDCM**, **BrTcp32**, **DNP3**, **Esser32**, **FipDrv32**, **FpcDrv32**, **IEC850**, **IEC870**, **IEC870_103**, **Otis**, **RTK9000**, **S7DCOS**, **SAIA_Slave**, **STRATON32** and **Trend32**.

6.2.2 Driver dialog configuration file

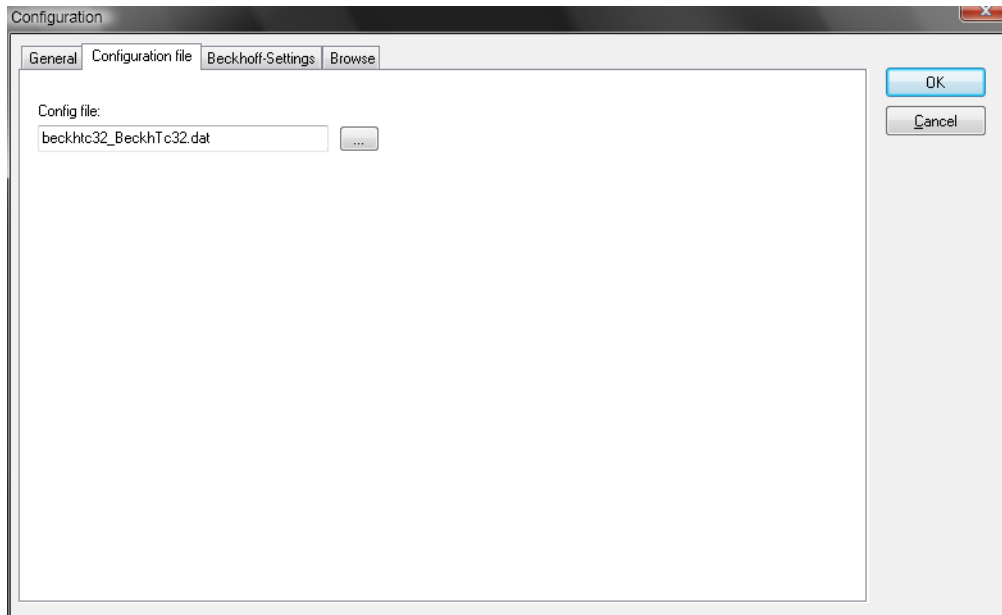
Here the name and the path of the configuration file (*.bec) must be entered. This file is needed for the driver communication. (It will be created automatically if it does not exist yet)

If you use several drivers in the project, you must specify a separate configuration file for every driver. There will be no check whether there is already a default.bec file from another driver.

The configuration file contains additional information about the variables that cannot be saved in zenon. Via the net address and offset of the zenon variables, the driver looks up the additional information in the configuration file, like the variable name, AMS-NETID, port number etc. As the variables are accessed in the file via the offset and net address of zenon, you can rename the variables in zenon. You can use a text editor to adjust the AMS-NETID of all variables with Search & Replace, for example.

You should not delete any entries in this file, as this may lead to offset movements when browsing & adding. Therefore, it may happen that zenon requests variable A with offset 3, but in the configuration file, variable B is listed at position 3.

Newly added variables receive a new offset number in the configuration file.



6.2.3 Driver dialog Beckhoff settings

Parameters	Description
Timeout	Here the timeout in milliseconds must be entered. If there is an error during the communication with the TwinCAT PLC (e.g. the PLC does not respond), the communication will be interrupted after that time and the driver status will be set to invalid.
Selected runtime system	Here the currently selected runtime system is displayed. The selected runtime system is needed for the next dialog "Browse". From this runtime system, the variables are read that can then be transferred to zenon (see 3.4 "Browse").
Runtime systems	<p>This list displays all defined runtime systems (port and NetID). With a doubleclick on a defined Run-Time System it is set as active Run-Time System and entered in the Box "Selected Run-Time System". Activating is also possible with the button "Apply" (after having selected the desired Run-Time System).</p> <p>A new Run-Time system can be added with pressing the button "New" and entering the necessary data in the following dialog.</p>

A defined RTS can be edited with selecting the desired RTS and then pressing the button "Edit"; then edit the data in the following dialog.

For a BC9000, the standard port is 800, not 801!

INI FILE

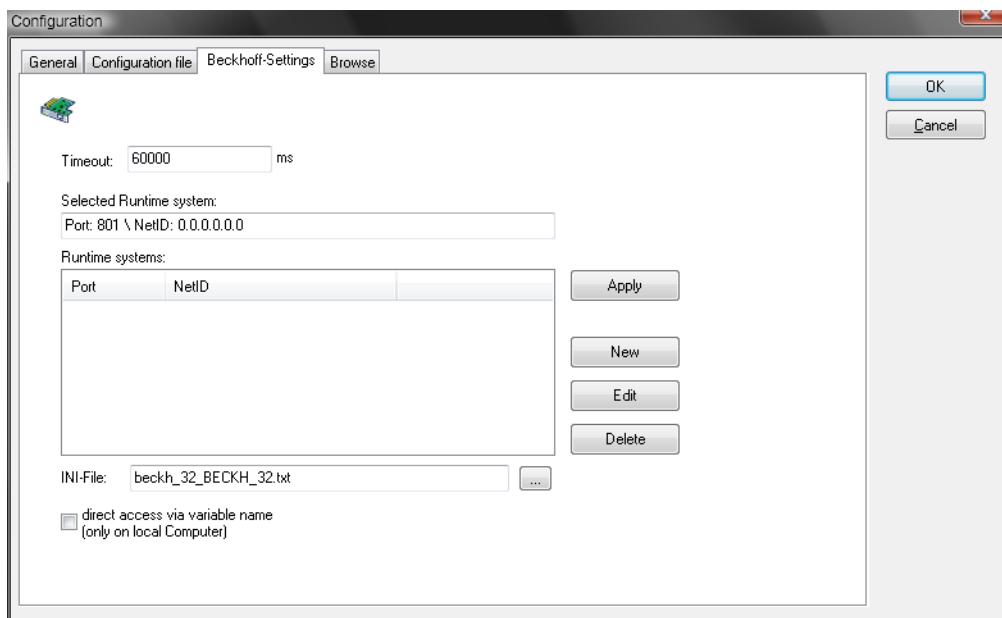
Here the path and the name of the INI files can be entered, where the defined Run-Time Systems are saved. (It will be created automatically if it does not exist yet)

DIRECT ACCESS VIA THE VARIABLE NAME (ONLY ON LOCAL COMPUTER): FROM VERSION 5.21

If you activate this option, the driver will access the variable via the variable name. This can only be done with variables that are defined on the same computer as the TwinCAT PLC.

Nevertheless, the variables must be taken over in the menu 'Browse', because the allocations are defined there.

Due to compatibility reasons with older projects, this option can be selected.



6.2.4 Driver dialog Browse

PLC VARIABLES

In this list all variables defined in the soft-PLC are displayed.

BROWSE

With pressing this button all variables are downloaded from the TwinCAT server and displayed in the window "PLC-Variables". This requires that the symbols entries are created, as shown in the screenshot from TwinCat PLC control.

BROWSING STRUCTURE VARIABLES

The following settings are required, to enable the support of structure variable browsing by TwinCAT.

Under Project > Options

Select the entry TwinCAT in the list on the left side of this dialog window. The "Symbol download" option box is important for browsing variables. By default, the setting "Dynamic symbols" is used. Set it to "Static symbols" and activate the check box "Global main" and "Global sub", as you can see in the screenshot.

ADD

The symbols selected in the "PLC variables" lists are transferred to the "Added PLC variables" list. Already existing entries are updated, if the symbols in the PLC have been changed since the last transfer.

When adding, the transferred symbols get an internal identification number, which is used as an address for creating a zenon variable.

If symbols are deleted in the lower list and newly added then, they get a new identification number. zenon variables already created with the original number have to be edited then!

ADDED PLC-VARIABLES

In this list all variables are displayed, that were transferred from the list "PLC variables".

In order to add a variable, click on it in the list "PLC-Variable" and press the button "Add" then. Now the variable is transferred to the lower list. These variables can be subsequently added to the zenon variables with the selection button.

USER DEFINED

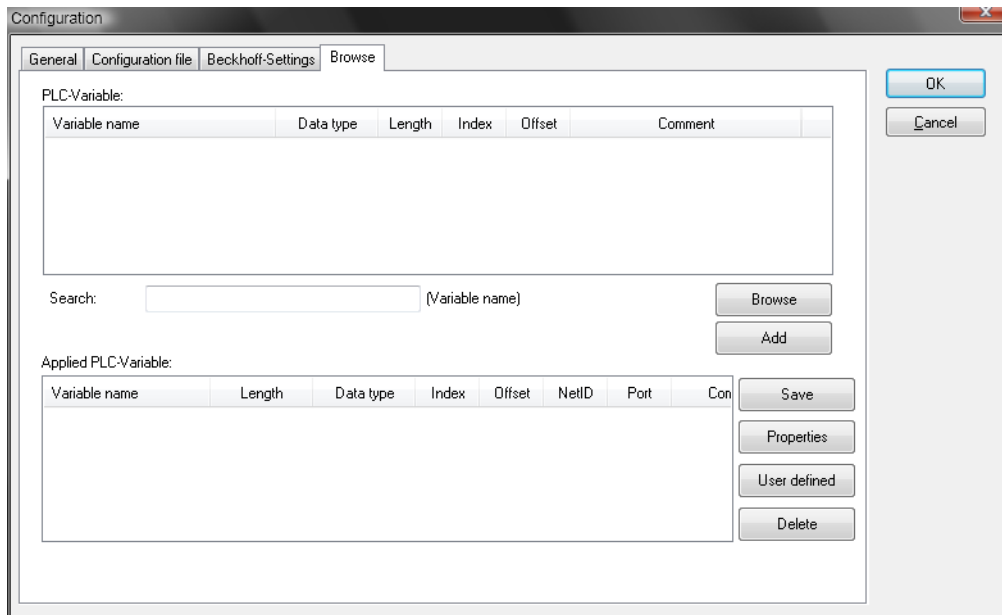
In order to define a variable by hand, click on the button "User-defined" and enter the variable data in the following dialog.

PROPERTIES

Single variable data can be edited with the button "Properties".

Delete	To delete a variable simply click on the button "Delete" (after having selected the variable).
Save	Before leaving the dialog the BEC file has to be saved. To do this simply press the button "Save" and the BEC file is saved.

If the dialog is closed without saving, all changes are lost. So do not forget to save the changes!



7. Creating variables

This is how you can create variables in the zenon Editor:

7.1 Creating variables in the Editor

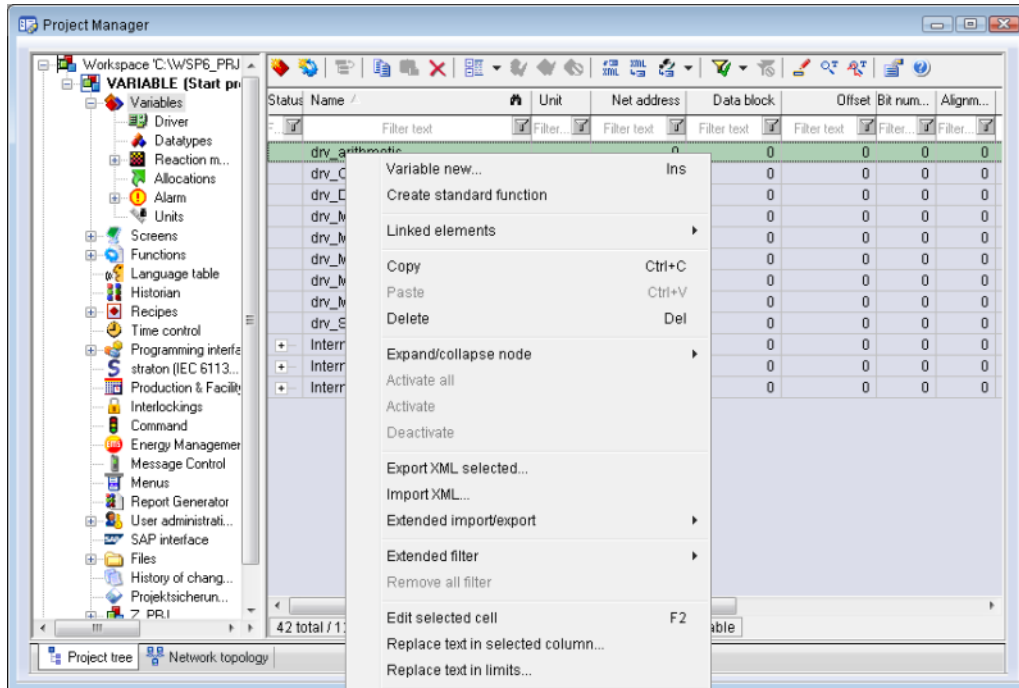
Variables can be created:

- ▶ as simple variables
- ▶ in arrays (main.chm::/15262.htm)
- ▶ as structure variables (main.chm::/15278.htm)

VARIABLE DIALOG

To create a new variable, regardless of which type:

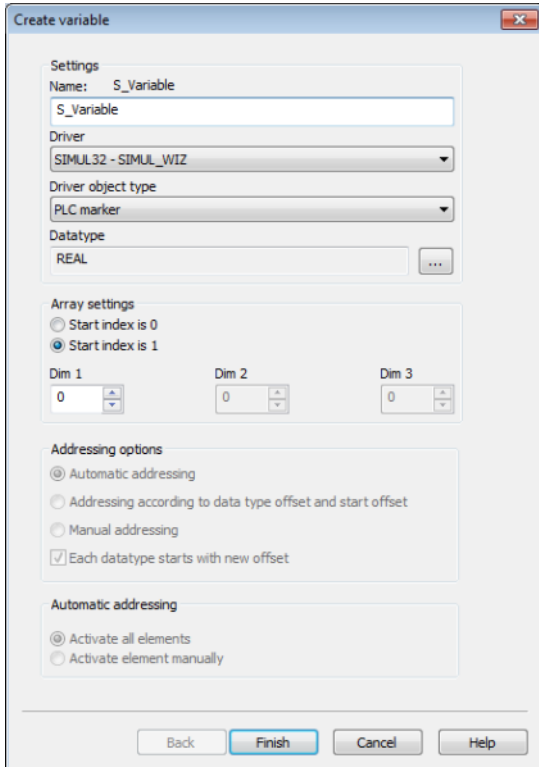
1. Select the **New variable** command in the **Variables** node in the context menu



The dialog for configuring variables is opened

2. Configure the variable

3. The settings that are possible depends on the type of variables



Property	Description
Name	<p>Distinct name of the variable. If a variable with the same name already exists in the project, no additional variable can be created with this name.</p> <p>Maximum length: 128 characters</p> <p>Attention: The characters # and @ are not permitted in variable names. If non-permitted characters are used, creation of variables cannot be completed and the Finish button remains inactive.</p> <p>Note: For some drivers, the addressing is possible over the property Symbolic address, as well.</p>
Drivers	<p>Select the desired driver from the drop-down list.</p> <p>Note: If no driver has been opened in the project, the driver for internal variables (Intern.exe (Main.chm::/Intern.chm::/Intern.htm)) is automatically loaded.</p>
Driver Object Type (cti.chm::/28685.htm)	Select the appropriate driver object type from the drop-down list.

Data Type	Select the desired data type. Click on the ... button to open the selection dialog.
Array settings	Expanded settings for array variables. You can find details in the Arrays chapter.
Addressing options	Expanded settings for arrays and structure variables. You can find details in the respective section.
Automatic element activation	Expanded settings for arrays and structure variables. You can find details in the respective section.

SYMBOLIC ADDRESS

The **Symbolic address** property can be used for addressing as an alternative to the **Name** or **Identification** of the variables. Selection is made in the driver dialog; configuration is carried out in the variable property. When importing variables of supported drivers, the property is entered automatically.

Maximum length: 1024 characters.

INHERITANCE FROM DATA TYPE

Measuring range, **Signal range** and **Set value** are always:

- ▶ derived from the datatype
- ▶ Automatically adapted if the data type is changed

Note for signal range: If a change is made to a data type that does not support the set **signal range**, the **signal range** is amended automatically. For example, for a change from **INT** to **SINT**, the **signal range** is changed to 127. The amendment is also carried out if the **signal range** was not inherited from the data type. In this case, the **measuring range** must be adapted manually.

7.2 Addressing

As of version 6 it is possible to directly import the TwinCat variable in the Editor online. In order to do this, you have to first browse the variables in the driver configuration and then add them to the configuration file.

Group/Property	Description
General	Property group for general settings.
Name	Freely definable name. Attention: For every zenon project the name must be unambiguous.
Identification	Freely definable identification. E.g. for Resources label, comments, ...
Addressing	
Net address	not used for this driver
Data block	For variables of object type <code>Extended data block</code> , enter the datablock number here. Adjustable from 0 to 4294967295. You can take the exact maximum area for data blocks from the manual of the PLC.
Offset	Offset of variables. Equal to the memory address of the variable in the PLC. Adjustable from 0 to 4294967295.
Alignment	not used for this driver
Bit number	Number of the bit within the configured offset. Possible entries: 0 to 65535.
String length	Only available for String variables. Maximum number of characters that the variable can take.
Driver connection/Data Type	Data type of the variable. Is selected during the creation of the variable; the type can be changed here. Attention: If you change the data type later, all other properties of the variable must be checked and adjusted, if necessary.
Driver connection/Driver Object Type	Object type of the variables. Depending on the driver used, is selected when the variable is created and can be changed here.
Driver connection/Priority	not used for this driver The driver does not support cyclically-poling communication in priority classes.

SPLITTING UP INDEX GROUPS IN TWINCAT IN ORDER TO GET NET ADDRESSES IN ZENON VARIABLES

Net address of the variable in zenon	Index group of the TwinCat variables
0	16384
1	16385
2	16400
3	16401
4	16416
5	16417
6	16432
7	16433
8	61472
9	61473
10	61488
11	61489

The index group identifies a certain data type (Bool, Byte ...) in TwinCat

7.3 Driver objects and datatypes

Driver objects are areas available in the PLC, such as markers, data blocks etc. Here you can find out which driver objects are provided by the driver and which IEC data types can be assigned to the respective driver objects.

7.3.1 Driver objects

The following object types are available in this driver:

Driver Object Type	Channel type	Read	Write	Supported data types	Comment
PLC marker	8	X	X	LREAL, BOOL, REAL, DINT, UDINT, INT, UINT, STRING, USINT, SINT	
Communication details	35	X	X	BOOL, SINT, USINT, INT, UINT, DINT, UDINT, REAL, STRING	<p>Variables for the static analysis of the communication; is transferred between driver and Runtime (not to the PLC).</p> <p>Note: The addressing and the behavior is the same for most zenon drivers.</p> <p>You can find detailed information on this in the Communication details (Driver variables) (on page 36) chapter.</p>

OBJECTS FOR PROCESS VARIABLES IN ZENON

Object	Read	Write	Comment
Configuration			
Bit marker	X	X	Address range (Offset) from 0 - 65535, bit 0 - 7
Byte marker	X	X	Address range (Offset) from 0 - 65535
Word marker	X	X	Address range (Offset) from 0 - 65535
Input bit	X	X	Address range (Offset) from 0 - 65535, bit 0 - 7
InputByte	X	X	Address range (Offset) from 0 - 65535
InputWord	X	X	Address range (Offset) from 0 - 65535
Output Bit	X	X	Address range (Offset) from 0 - 65535, bit 0 - 7
Output byte	X	X	Address range (Offset) from 0 - 65535
Output Word	X	X	Address range (Offset) from 0 - 65535

Key:

X: supported

--: not supported

7.3.2 Mapping of the data types

All variables in zenon are derived from IEC data types. The following table compares the IEC datatypes with the datatypes of the PLC.

EXAMPLE FOR ALL POSSIBLE ZENON DATA TYPES

PLC	zenon
IX 1.0	Input bit offset 1 bit 1
I1	Input byte offset 1 low-order
MB 100	Byte marker offset 100 low-order
MX 100.0	Bit marker offset 100 bit 0
MW 100	Word marker offset 100
Q1	Output byte offset 1 low-order
QW 60000	Output word offset 60000
QX 1.1	Output bit offset 1 bit 1

Data type: The property **Data type** is the internal numerical name of the data type. It is also used for the extended DBF import/export of the variables.

7.4 Creating variables by importing

Variables can also be imported by importing them. The XML and DBF import is available for every driver.



Information

You can find details on the import and export of variables in the Import-Export (main.chm::/13028.htm) manual in the Variables (main.chm::/13045.htm) section.

7.4.1 XML import

During XML import of variables or data types, these are first assigned to a driver and then analyzed. Before import, the user decides whether and how the respective element (variable or data type) is to be imported:

- ▶ **Import:**
The element is imported as a new element.
- ▶ **Overwrite:**
The element is imported and overwrites a pre-existing element.
- ▶ **Do not import:**
The element is not imported.

Note: The actions and their durations are shown in a progress bar during import.

REQUIREMENTS

The following conditions are applicable during import:

- ▶ Backward compatibility
At the XML import/export there is no backward compatibility. Data from older zenon versions cannot be taken over. The handover of data from newer to older versions is not supported.
- ▶ Consistency
The XML file to be imported has to be consistent. There is no plausibility check on importing the file. If there are errors in the import file, this can lead to undesirable effects in the project.

Particular attention must be paid to this, primarily if not all properties exist in the XML file and these are then filled with default values. E.g.: A binary variable has a limit value of 300.
- ▶ Structure data types
Structure data types must have the same number of structure elements.
Example: A structure data type in the project has 3 structure elements. A data type with the same name in the XML file has 4 structure elements. Then none of the variables based on this data type in the file are imported into the project.



Hint

You can find further information on XML import in the **Import - Export** manual, in the **XML import (main.chm::/13046.htm)** chapter.

7.4.2 DBF Import/Export

Data can be exported to and imported from dBase.



Information

Import and Export via CSV or dBase supported; no driver specific variable settings, such as formulas. Use export/import via XML for this.

IMPORT DBF FILE

To start the import:

1. right-click on the variable list
2. in the drop-down list of **Extended export/import...** select the **Import dBase** command
3. follow the import assistant

The format of the file is described in the chapter File structure.



Information

Note:

- ▶ Driver object type and data type must be amended to the target driver in the DBF file in order for variables to be imported.
- ▶ dBase does not support structures or arrays (complex variables) at import.

EXPORT DBF FILE

To start the export:

1. right-click on the variable list
2. in the drop-down list of **Extended export/import...** select the **Export dBase...** command
3. follow the export assistant



Attention

DBF files:

- ▶ must correspond to the 8.3 DOS format for filenames (8 alphanumeric characters for name, 3 character suffix, no spaces)
- ▶ must not have dots (.) in the path name.
e.g. the path `C:\users\John.Smith\test.dbf` is invalid.
Valid: `C:\users\JohnSmith\test.dbf`
- ▶ must be stored close to the root directory in order to fulfill the limit for file name length including path: maximum 255 characters

The format of the file is described in the chapter File structure.



Information

dBase does not support structures or arrays (complex variables) at export.

FILE STRUCTURE OF THE DBASE EXPORT FILE

The dBaseIV file must have the following structure and contents for variable import and export:



Attention

dBase does not support structures or arrays (complex variables) at export.

DBF files must:

- ▶ conform with their name to the 8.3 DOS format (8 alphanumeric characters for name, 3 characters for extension, no space)
- ▶ Be stored close to the root directory (Root)

STRUCTURE

Identification	Type	Field size	Comment
KANALNAME	Char	128	Variable name. The length can be limited using the MAX_LAENGE entry in the project.ini file.
KANAL_R	C	128	The original name of a variable that is to be replaced by the new name entered under "VARIABLENNAME" (variable name) (field/column must be entered manually). The length can be limited using the MAX_LAENGE entry in the project.ini file.
KANAL_D	Log	1	The variable is deleted with the 1 entry (field/column has to be created by hand).
TAGNR	C	128	Identification. The length can be limited using the MAX_LAENGE entry in the project.ini file.
EINHEIT	C	11	Technical unit
DATENART	C	3	Data type (e.g. bit, byte, word, ...) corresponds to the data type.
KANALTYP	C	3	Memory area in the PLC (e.g. marker area, data area, ...) corresponds to the driver object type.
HWKANAL	Num	3	Net address
BAUSTEIN	N	3	Datablock address (only for variables from the data area of the PLC)
ADRESSE	N	5	Offset
BITADR	N	2	For bit variables: bit address For byte variables: 0=lower, 8=higher byte For string variables: Length of string (max. 63 characters)
ARRAYSIZE	N	16	Number of variables in the array for index variables ATTENTION: Only the first variable is fully available. All others are only available for VBA or the Recipegroup Manager

LES_SCHR	L	1	Write-Read-Authorization 0: Not allowed to set value. 1: Allowed to set value.
MIT_ZEIT	R	1	time stamp in zenon (only if supported by the driver)
OBJEKT	N	2	Driver-specific ID number of the primitive object comprises TREIBER-OBJEKTYP and DATENTYP
SIGMIN	Float	16	Non-linearized signal - minimum (signal resolution)
SIGMAX	F	16	Non-linearized signal - maximum (signal resolution)
ANZMIN	F	16	Technical value - minimum (measuring range)
ANZMAX	F	16	Technical value - maximum (measuring range)
ANZKOMMA	N	1	Number of decimal places for the display of the values (measuring range)
UPDATERATE	F	19	Update rate for mathematics variables (in sec, one decimal possible) not used for all other variables
MEMTIEFE	N	7	Only for compatibility reasons
HDRATE	F	19	HD update rate for historical values (in sec, one decimal possible)
HDTIEFE	N	7	HD entry depth for historical values (number)
NACHSORT	R	1	HD data as postsorted values
DRRATE	F	19	Updating to the output (for zenon DDE server, in [s], one decimal possible)
HYST_PLUS	F	16	Positive hysteresis, from measuring range
HYST_MINUS	F	16	Negative hysteresis, from measuring range
PRIOR	N	16	Priority of the variable
REAMATRIZE	C	32	Allocated reaction matrix
ERSATZWERT	F	16	Substitute value, from measuring range
SOLLMIN	F	16	Minimum for set value actions, from measuring range
SOLLMAX	F	16	Maximum for set value actions, from measuring range
VOMSTANDBY	R	1	Get value from standby server; the value of the variable is not requested from the server but from the Standby Server in redundant networks
RESOURCE	C	128	Resources label. Free string for export and display in lists. The length can be limited using the MAX_LAENGE entry in project.ini .
ADJWVBA	R	1	Non-linear value adaption: 0: Non-linear value adaption is used

			1: Non-linear value adaption is not used
ADJZENON	C	128	Linked VBA macro for reading the variable value for non-linear value adjustment.
ADJWVBA	C	128	ed VBA macro for writing the variable value for non-linear value adjustment.
ZWREMA	N	16	Linked counter REMA.
MAXGRAD	N	16	Gradient overflow for counter REMA.



Attention

When importing, the driver object type and data type must be amended to the target driver in the DBF file in order for variables to be imported.

LIMIT VALUE DEFINITION

Limit definition for limit values 1 to 4, or status 1 to 4:

Identification	Type	Field size	Comment
AKTIV1	R	1	Limit value active (per limit value available)
GRENZWERT1	F	20	technical value or ID number of a linked variable for a dynamic limit value (see VARIABLEx) (if VARIABLEx is 1 and here it is -1, the existing variable linkage is not overwritten)
SCHWWERT1	F	16	Threshold value for limit value
HYSTERESE1	F	14	Is not used
BLINKEN1	R	1	Set blink attribute
BTB1	R	1	Logging in CEL
ALARM1	R	1	Alarm
DRUCKEN1	R	1	Printer output (for CEL or Alarm)
QUITTIER1	R	1	Must be acknowledged
LOESCHE1	R	1	Must be deleted
VARIABLE1	R	1	Dyn. limit value linking the limit is defined by an absolute value (see field GRENZWERTx).
FUNC1	R	1	Functions linking
ASK_FUNC1	R	1	Execution via Alarm Message List
FUNC_NR1	N	10	ID number of the linked function (if "-1" is entered here, the existing function is not overwritten during import)
A_GRUPPE1	N	10	Alarm/Event Group
A_KLASSE1	N	10	Alarm/Event Class
MIN_MAX1	C	3	Minimum, Maximum
FARBE1	N	10	Color as Windows coding
GRENZTXT1	C	66	Limit value text
A_DELAY1	N	10	Time delay
INVISIBLE1	R	1	Invisible

Expressions in the column "Comment" refer to the expressions used in the dialog boxes for the definition of variables. For more information, see chapter Variable definition.

7.5 Communication details (Driver variables)

The driver kit implements a number of driver variables. These variables are part of the driver object type **Communication details**. These are divided into:

- ▶ Information
- ▶ Configuration
- ▶ Statistics and
- ▶ Error message

The definitions of the variables implemented in the driver kit are available in the import file **drvvar.dbf** (on the installation medium in the \Predefined\Variables folder) and can be imported from there.

Note: Variable names must be unique in zenon. If driver variables of the driver object type **Communication details** are to be imported from **drvvar.dbf** again, the variables that were imported beforehand must be renamed.



Information

*Not every driver supports all driver variables of the driver object type **Communication details**.*

For example:

- ▶ Variables for modem information are only supported by modem-compatible drivers
- ▶ Driver variables for the polling cycle only for pure polling drivers
- ▶ Connection-related information such as ErrorMessage only for drivers that only edit one connection at a time

INFORMATION

Name from import	Type	Offset	Description
MainVersion	UINT	0	Main version number of the driver.
SubVersion	UINT	1	Sub version number of the driver.
BuildVersion	UINT	29	Build version number of the driver.
RTMajor	UINT	49	zenon main version number
RTMinor	UINT	50	zenon sub version number
RTSp	UINT	51	zenon Service Pack number
RTBuild	UINT	52	zenon build number
LineStateIdle	BOOL	24.0	TRUE, if the modem connection is idle
LineStateOffering	BOOL	24.1	TRUE, if a call is received
LineStateAccepted	BOOL	24.2	The call is accepted
LineStateDialtone	BOOL	24.3	Dialtone recognized
LineStateDialing	BOOL	24.4	Dialing active
LineStateRingBack	BOOL	24.5	While establishing the connection
LineStateBusy	BOOL	24.6	Target station is busy
LineStateSpecialInfo	BOOL	24.7	Special status information received
LineStateConnected	BOOL	24.8	Connection established
LineStateProceeding	BOOL	24.9	Dialing completed
LineStateOnHold	BOOL	24.10	Connection in hold
LineStateConferenced	BOOL	24.11	Connection in conference mode.
LineStateOnHoldPendConf	BOOL	24.12	Connection in hold for conference
LineStateOnHoldPendTransfer	BOOL	24.13	Connection in hold for transfer
LineStateDisconnected	BOOL	24.14	Connection terminated.
LineStateUnknow	BOOL	24.15	Connection status unknown
ModemStatus	UDINT	24	Current modem status
TreiberStop	BOOL	28	Driver stopped For <code>driver stop</code> , the variable has the value <code>TRUE</code> and an OFF bit. After the driver has started, the variable has the value <code>FALSE</code> and no OFF bit.
SimulRTState	UDINT	60	Informs the status of Runtime for driver simulation.

ConnectionStates	STRING	61	<p>Internal connection status of the driver to the PLC.</p> <p>Connection statuses:</p> <p>0 : Connection OK</p> <p>1 : Connection failure</p> <p>2 : Connection simulated</p> <p>Formating:</p> <p><Netzadresse>:<Verbindungszustand>;...;;</p> <p>A connection is only known after a variable has first signed in. In order for a connection to be contained in a string, a variable of this connection must be signed in once.</p> <p>The status of a connection is only updated if a variable of the connection is signed in. Otherwise there is no communication with the corresponding controller.</p>
------------------	--------	----	--

CONFIGURATION

Name from import	Type	Offset	Description
ReconnectInRead	BOOL	27	If TRUE, the modem is automatically reconnected for reading
ApplyCom	BOOL	36	Apply changes in the settings of the serial interface. Writing to this variable immediately results in the method SrvDrvVarApplyCom being called (which currently has no further function).
ApplyModem	BOOL	37	Apply changes in the settings of the modem. Writing this variable immediately calls the method SrvDrvVarApplyModem. This closes the current connection and opens a new one according to the settings PhoneNumberSet and ModemHwAdrSet .
PhoneNumberSet	STRING	38	Telephone number, that should be used
ModemHwAdrSet	DINT	39	Hardware address for the telephone number

GlobalUpdate	UDINT	3	Update time in milliseconds (ms).
BGlobalUpdaten	BOOL	4	TRUE, if update time is global
TreiberSimul	BOOL	5	TRUE, if driver in sin simulation mode
TreiberProzab	BOOL	6	TRUE, if the variables update list should be kept in the memory
ModemActive	BOOL	7	TRUE, if the modem is active for the driver
Device	STRING	8	Name of the serial interface or name of the modem
ComPort	UINT	9	Number of the serial interface.
Baudrate	UDINT	10	Baud rate of the serial interface.
Parity	SINT	11	Parity of the serial interface
ByteSize	USINT	14	Number of bits per character of the serial interface Value = 0 if the driver cannot establish any serial connection.
StopBit	USINT	13	Number of stop bits of the serial interface.
Autoconnect	BOOL	16	TRUE, if the modem connection should be established automatically for reading/writing
PhoneNumber	STRING	17	Current telephone number
ModemHwAdr	DINT	21	Hardware address of current telephone number
RxIdleTime	UINT	18	Modem is disconnected, if no data transfer occurs for this time in seconds (s)
WriteTimeout	UDINT	19	Maximum write duration for a modem connection in milliseconds (ms).
RingCountSet	UDINT	20	Number of ringing tones before a call is accepted
ReCallIdleTime	UINT	53	Waiting time between calls in seconds (s).
ConnectTimeout	UINT	54	Time in seconds (s) to establish a connection.

STATISTICS

Name from import	Type	Offset	Description
MaxWriteTime	UDINT	31	The longest time in milliseconds (ms) that is required for writing.
MinWriteTime	UDINT	32	The shortest time in milliseconds (ms) that is required for writing.
MaxBlkReadTime	UDINT	40	Longest time in milliseconds (ms) that is required to read a data block.
MinBlkReadTime	UDINT	41	Shortest time in milliseconds (ms) that is required to read a data block.
WriteErrorCount	UDINT	33	Number of writing errors
ReadSucceedCount	UDINT	35	Number of successful reading attempts
MaxCycleTime	UDINT	22	Longest time in milliseconds (ms) required to read all requested data.
MinCycleTime	UDINT	23	Shortest time in milliseconds (ms) required to read all requested data.
WriteCount	UDINT	26	Number of writing attempts
ReadErrorCount	UDINT	34	Number of reading errors
MaxUpdateTimeNormal	UDINT	56	Time since the last update of the priority group Normal in milliseconds (ms).
MaxUpdateTimeHigher	UDINT	57	Time since the last update of the priority group Higher in milliseconds (ms).
MaxUpdateTimeHigh	UDINT	58	Time since the last update of the priority group High in milliseconds (ms).
MaxUpdateTimeHighest	UDINT	59	Time since the last update of the priority group Highest in milliseconds (ms).
PokeFinish	BOOL	55	Goes to 1 for a query, if all current pokes were executed

ERROR MESSAGE

Name from import	Type	Offset	Description
------------------	------	--------	-------------

ErrorTimeDW	UDINT	2	Time (in seconds since 1.1.1970), when the last error occurred.
ErrorTimeS	STRING	2	Time (in seconds since 1.1.1970), when the last error occurred.
RdErrPrimObj	UDINT	42	Number of the PrimObject, when the last reading error occurred.
RdErrStationsName	STRING	43	Name of the station, when the last reading error occurred.
RdErrBlockCount	UINT	44	Number of blocks to read when the last reading error occurred.
RdErrHwAdresse	DINT	45	Hardware address when the last reading error occurred.
RdErrDatablockNo	UDINT	46	Block number when the last reading error occurred.
RdErrMarkerNo	UDINT	47	Marker number when the last reading error occurred.
RdErrSize	UDINT	48	Block size when the last reading error occurred.
DrvError	USINT	25	Error message as number
DrvErrorMsg	STRING	30	Error message as text
ErrorFile	STRING	15	Name of error log file

8. Driver-specific functions

The driver supports the following functions:

ZENON6.INI ENTRIES

[BECKHOFF]

SIMUL=0 0....Hardware Mode 1....Simulation Mode

9. Driver command function

The zenon **Driver commands** function is to influence drivers using zenon. You can do the following with a driver command:

- ▶ Start
- ▶ Stop
- ▶ Shift a certain driver mode
- ▶ Instigate certain actions

Attention: The zenon **Driver commands** function is not identical to driver commands that can be executed in Runtime with Energy drivers!



Information

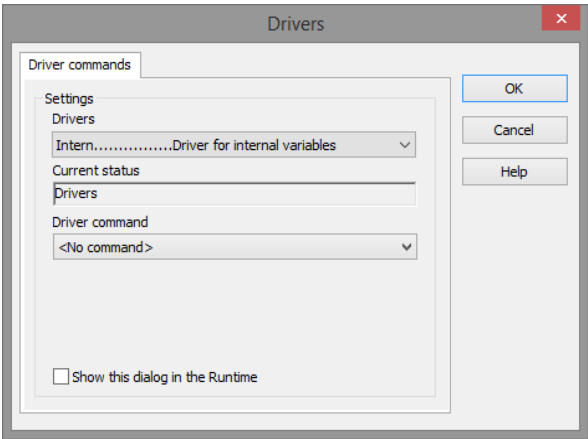
This chapter describes standard functions that are valid for most zenon drivers. However, not all functions described here are available for every driver. For example, a driver that does not, according to the data sheet, support a modem connection also does not have any modem functions.

CONFIGURATION OF THE FUNCTION

Configuration is carried out using the **Driver commands** function. To do this:

1. Create a new function in the zenon Editor.
2. Navigate to the node **Variable**.
3. Select the **Driver commands** entry.
The dialog for configuration is opened.
4. Select the desired driver and the required command.
5. Close the dialog by clicking on **OK** and ensure that the function is executed in Runtime. Heed the notices in the **Driver command function in the network** section.

DRIVER COMMAND DIALOG



Option	Description
Drivers	Selection of the driver from the drop-down list. It contains all drivers loaded in the project.
Current status	Fixed entry which has no function in the current version.
Driver command	Drop-down list for the selection of the command:
<No command>	No command is sent. A command that already exists can thus be removed from a configured function.
Start driver (online mode)	Driver is reinitialized and started.
Stop driver (offline mode)	Driver is stopped. No new data is accepted. Note: If the driver is in offline mode, all variables that were created for this driver receive the status <code>switched off (OFF; Bit 20)</code> .
Driver in simulation mode	Driver is set into simulation mode. The values of all variables of the driver are simulated by the driver. No values from the connected hardware (e.g. PLC, bus system, ...) are displayed.
Driver in hardware mode	Driver is set into hardware mode. For the variables of the driver the values from the connected hardware (e.g. PLC, bus system, ...) are displayed.
Driver-specific command	Enter driver-specific commands. Opens input field in order to enter a command.
Activate driver write set value	Write set value to a driver is allowed.
Deactivate driver write set value	Write set value to a driver is prohibited.
Establish connection with modem	Establish connection (for modem drivers) Opens the input fields for the hardware address and for the telephone number.
Disconnect from modem	Terminate connection (for modem drivers)
Driver in counting simulation mode	Driver is set into counting simulation mode. All values are initialized with 0 and incremented in the set update time by 1 each time up to the maximum value and then start at 0 again.
Driver in static simulation mode	Driver is set into counting simulation mode. All values are initialized with 0.
Driver in programmed simulation mode	Driver is set into counting simulation mode. The values are calculated by a freely-programmable simulation project. The simulation project is created with the help of the zenon Logic Workbench and runs in the zenon Logic Runtime.
Show this dialog in the Runtime	The dialog is shown in Runtime so that changes can be made.

DRIVER COMMAND FUNCTION IN THE NETWORK

If the computer on which the **Driver commands** function is executed is part of the zenon network, further actions are also carried out. A special network command is sent from the computer to the project server, which then executes the desired action on its driver. In addition, the Server sends the same driver command to the project standby. The standby also carries out the action on its driver.

This makes sure that Server and Standby are synchronized. This only works if the Server and the Standby both have a working and independent connection to the hardware.

10. Error analysis

Should there be communication problems, this chapter will assist you in finding out the error.

10.1 Analysis tool

All zenon modules such as Editor, Runtime, drivers, etc. write messages to a joint log file. To display them correctly and clearly, use the Diagnosis Viewer (main.chm::/12464.htm) program that was also installed with zenon. You can find it under *Start/All programs/zenon/Tools 8.00 -> Diagviewer*.

zenon driver log all errors in the LOG files. LOG files are text files with a special structure. The default folder for the LOG files is subfolder **LOG** in the folder **ProgramData**. For example:

%ProgramData%\COPA-DATA\LOG.

Attention: With the default settings, a driver only logs error information. With the Diagnosis Viewer you can enhance the diagnosis level for most of the drivers to "Debug" and "Deep Debug". With this the driver also logs all other important tasks and events.

In the Diagnosis Viewer you can also:

- ▶ Follow newly-created entries in real time
- ▶ customize the logging settings
- ▶ change the folder in which the LOG files are saved

Note:

1. The Diagnosis Viewer displays all entries in UTC (coordinated world time) and not in local time.
2. The Diagnosis Viewer does not display all columns of a LOG file per default. To display more columns activate property **Add all columns with entry** in the context menu of the column header.

3. If you only use **Error-Logging**, the problem description is in the column **Error text**. For other diagnosis level the description is in the column **General text**.
4. For communication problems many drivers also log error numbers which the PLC assigns to them. They are displayed in **Error text** or **Error code** or **Driver error parameter (1 and 2)**. Hints on the meaning of error codes can be found in the driver documentation and the protocol/PLC description.
5. At the end of your test set back the diagnosis level from **Debug** or **Deep Debug**. At **Debug** and **Deep Debug** there are a great deal of data for logging which are saved to the hard drive and which can influence your system performance. They are still logged even after you close the Diagnosis Viewer.



Attention

In Windows CE errors are not logged per default due to performance reasons.

You can find further information on the Diagnosis Viewer in the Diagnose Viewer (main.chm::/12464.htm) manual.

10.2 Check list

Are the used variables correctly defined in the PLC?

Is the 'default.bec' configuration file of the driver located on the CE device?

Have you analyzed the error text file (which errors did occur)?

Send the zenon project to support@copadata.com