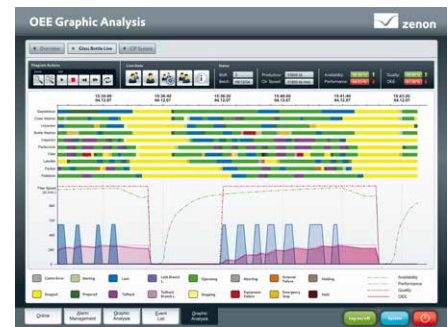


Full information for the user

Ergonomics for the user [4/4]

Ergonomic operation also means being able to react quickly and correctly. Being optimally informed is the basis required to make the right decisions. zenon supports you optimally in distinguishing the important from the unimportant, being proactively informed or finding the required information quickly – from the HMI through to management level.



PRE-DEFINED DYNAMIC ELEMENTS

You can display all values in Service Engine in the form of trend curves with the “Trend Element” dynamic element. The Trend Element can display data online without saving or display data stored on a hard drive. The curve colors and forms can be freely adjusted. All curves are scaled as a percentage of the measuring range resolution of the variable.

REPORT GENERATOR

The Report Generator is for the documentation, analysis and presentation of process data. It is fully integrated into zenon with an easy-to-use interface. It is also possible to access all online and archive data, such as alarm and event management entries (AML/CEL) and the zenon recipe data. The reports created in the development environment can be displayed, edited, recreated, printed or exported in the zenon Service Engine, for example time-controlled in the background.

REPORT VIEWER

The Report Viewer offers full graphic reporting for the HMI, based on Microsoft reporting technology. Regardless of whether it is batch reports, graphic alarm statistics, prompt production evaluations or evaluations of key figures. The Report Viewer expands the Report Generator and completes the HMI-close reporting in zenon.

FAST FACTS

- ▶ Provides information regardless of device used
- ▶ Consistent and integrated data collection, evaluation and presentation
- ▶ Reporting of HMI up to management level

ARCHIVE REVISION

Archive Revision is an easy to use tool for monitoring and processing archive data. The data is displayed in a clearly-arranged list: Date/time, variable name, value, unit of measurement, status and also the respective limit value text. Archive Revision allows very quick filtering according to certain status information.

EXTENDED TREND (ETM)

Extended Trend is a comprehensive tool to graphically depict values in curve form. Recorded historical data (from archives or HD data) can be depicted, as well as online data that is not saved.

- ▶ As many curves as desired, with different scaling, can be displayed
- ▶ Equidistant and non-equidistant values including correct interpolation
- ▶ Curves can be sampled with a ruler (two rulers are also possible)
- ▶ Two time axes can be displayed at the same time
- ▶ Automatic refresh can be set
- ▶ Easy-to-use print options
- ▶ Labels for GANTT charts
- ▶ Read back and process data from SQL server

ADVANCED REPORTING

zenon’s program for dynamic production reporting offers advanced possibilities for demanding reporting tasks.

- ▶ Use of historical and real-time data
- ▶ Processing of data from different data sources
- ▶ Processing of data saved centrally or/and non-centrally
- ▶ Calculation of KPIs such as OEE or company-specific KPIs
- ▶ and much more

Full information for the user

Ergonomics for the user [4/4]

Report Generator	<ul style="list-style-type: none">▶ Smooth reading and writing of manual, target, actual or archive values▶ Approximately 150 further-processing functions for calculation, output and formatting of data▶ Complete integration into the zenon security concept▶ Same familiar zenon look & feel▶ Sophisticated print function▶ Can be integrated directly into the Recipe Group Manager (RGM)▶ and much more
Report Viewer	<ul style="list-style-type: none">▶ Graphic reports on the HMI▶ Combination of graphic and table elements▶ Inclusion of RDL files▶ Editing of RDL files with supplied BIDS Engineering Studio▶ Processing of data from alarms, CEL, Batch Control, RGM, archives and online values
Display options	<ul style="list-style-type: none">▶ Free settings of the curve layouts (line types, colors, line thickness, etc.)▶ Transparency levels for curve filling▶ Linear or logarithmic display▶ Free zooming, free scrolling▶ Adjustable X axis configuration: Positioning, scale division, color, real time or relative time display▶ Adjustable Y-axis configuration for each curve: Positioning, Scale division, color, autoscaling▶ Grid display▶ Scanners▶ and much more