



zenon  
12

# HIGHLIGHTS

## Welcoming the future in the Food & Beverage industry

True industry transformation is evident and there is a paradigm shift in manufacturing occurring: changing organizations, the creation of new roles, and developing new sustainability competences. Innovation and digitalization enabled by the zenon software platform can help the Food & Beverage Industry to achieve its net zero ambitions. With the new version of zenon, we feel privileged to partner with these sustainability makers in their transformation journeys.

### New sense of freedom in digitalization architectures

#### External Information Model for OPC UA

zenon can now use information models (UA Nodeset files) for OPC UA

- ▶ OPC UA Server: Support for external information model Improved data structuring possibilities. Benefit from standards-based information models.
- ▶ OPC UA Driver (Client): Support for importing external information models.

Enabling offline tag browsing for OPC UA client implementation.

#### Process Gateways

New zenon functions and mechanisms for Starting/Ending/Restarting Process Gateways

- ▶ Enhanced behaviour regarding “Start automatically” property Increased gateway service availability.
- ▶ New “Process Gateway action” functions Full operational control from the application.

#### SAP Interface

- ▶ zenon's SAP interface now uses the SAP Netweaver interface Benefit from compatibility with the latest SAP versions. Exchange production data with the ERP layer to improve your workflows.

#### zenon on Linux

zenon Service Engine for Linux

- ▶ Data Acquisition (selected drivers)
  - ▶ Alarms and Events
  - ▶ Data Archiving (Edge Historian)
  - ▶ Data Processing (zenon Logic Service)
  - ▶ Data Exchange (OPC UA Process Gateway: Variable read/write, Secure communication, OPC-UA client authentication using certificates)
  - ▶ zenon IIoT Services Integration (Device Management, Web Engine, Data Storage, API Service)
  - ▶ Visualisation via Web Engine
- For platform-agnostic data acquisition and data processing.

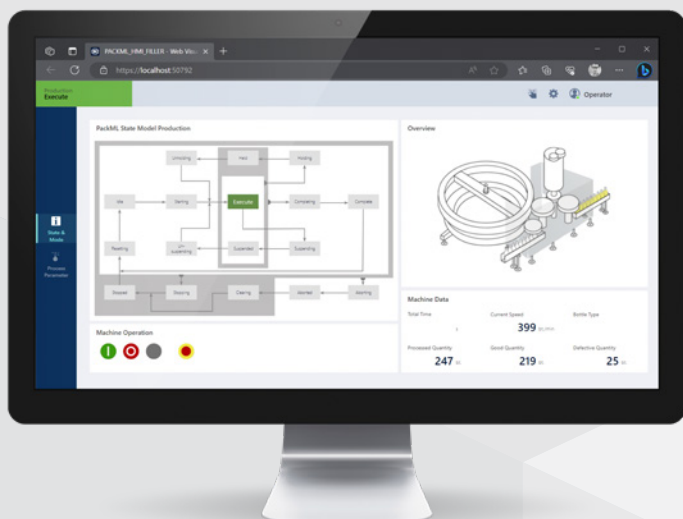
### Continuous enhancement of user experience

#### Report Engine

- ▶ Status value evaluation Empower users to include data quality in reporting.

#### Web Visualization Service (WVS)

- ▶ Support for Equipment model (EQM) screen
  - ▶ Support for Recipegroup Manager (RGM) screen
  - ▶ Support for additional screen elements and properties
- A wide range of solutions can be realized via a web frontend. Benefit from enhanced mobility and a hardware-agnostic approach.





zenon  
12

### Extended Trend

- ▶ Extended styles for axis and curves
- ▶ Multi-select and multi-edit of trend curves

Benefit from increased efficiency during configuration. Setting up the appearance of curves in a trend is now even easier.

### Process Recorder

- ▶ Adjustable playback speed

Review processes faster or slower to effectively understand every historical event.

## Mature engineering of modular solutions

### Smart Objects

Enhanced functionalities and handling of Smart Objects

- ▶ Access protection for Smart Object Templates

Protect your tested/validated components against modification.

- ▶ Flexible Logic Project Mapping

Flexible allocation of physical and virtual target platforms (61131-3 runtime) to host PLC code.

- ▶ Use of WPF elements in Smart Objects

Enhanced graphical and functional possibilities with Smart Objects.

- ▶ Smart Object API

Extending the support of automated Smart Object engineering.

### Module Type Package (MTP)

- ▶ Support of latest standards versions, Part 1 to 5.1
- ▶ Support for Addins in MTP-Studio
- ▶ Updated design of the MTP template project

Easily create your POL with increased flexibility and compatibility.

### Engineering experience

- ▶ Drivers in zenon now available for XML Export and Import via GUI
- ▶ Fast and reliable solution lifecycle management.
- ▶ Warnings in output window have jump targets

Enhanced engineering efficiency through cross-navigation from validation messages

