

While attempting to install "Visual C++ 2015 Redistributable(x64)..." on a Windows Server 2008 R2 server, a failure with the following error message appears:

"0x800b010a - A certificate chain could not be built to a trusted root authority"



Reason:

This issue occurs when you operate in an environment that's disconnected from the Internet or that has a firewall that blocks content.

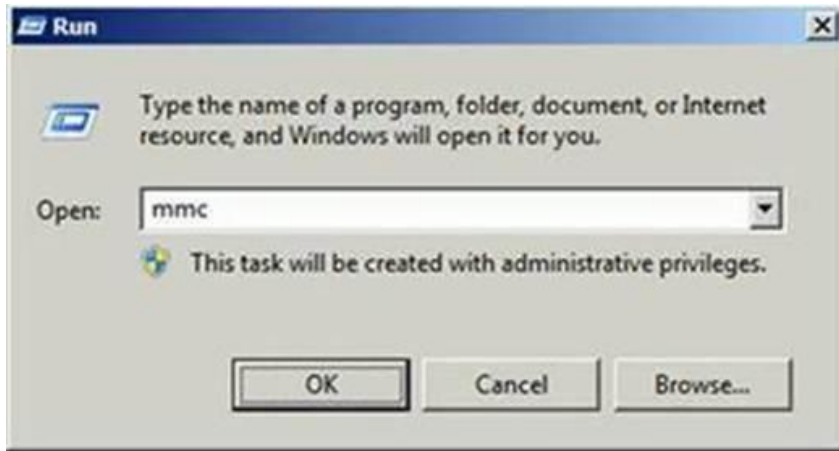
Reference: <https://support.microsoft.com/en-in/kb/3149737>

Action Plan:

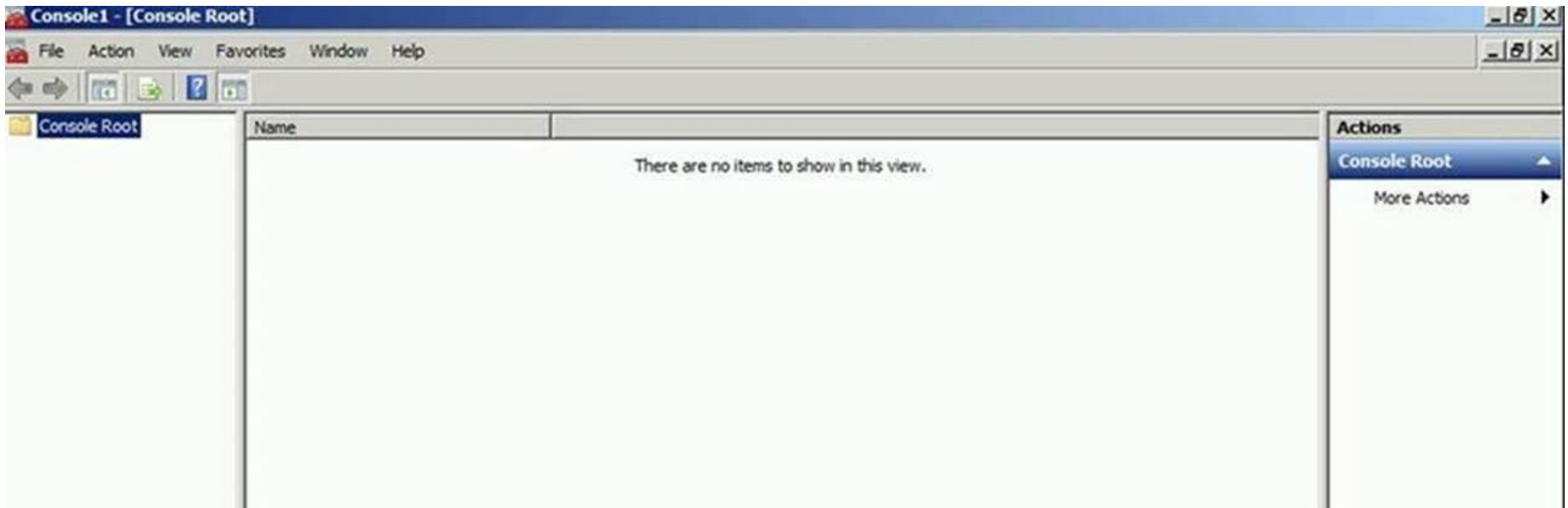
Please install the "Visual C++ 2015 Redistributable(x64) " through vcredist_x64.exe after performing the below steps on the problematic machine.

1. Download the certificate named "**MicRooCerAut2011_2011_03_22.cer**" from https://www.microsoft.com/pki/certs/MicRooCerAut2011_2011_03_22.crt
2. Copy it to the "C:\Temp\" folder on the problematic machine

3. On the Start Menu, click Run, type MMC, and then click OK



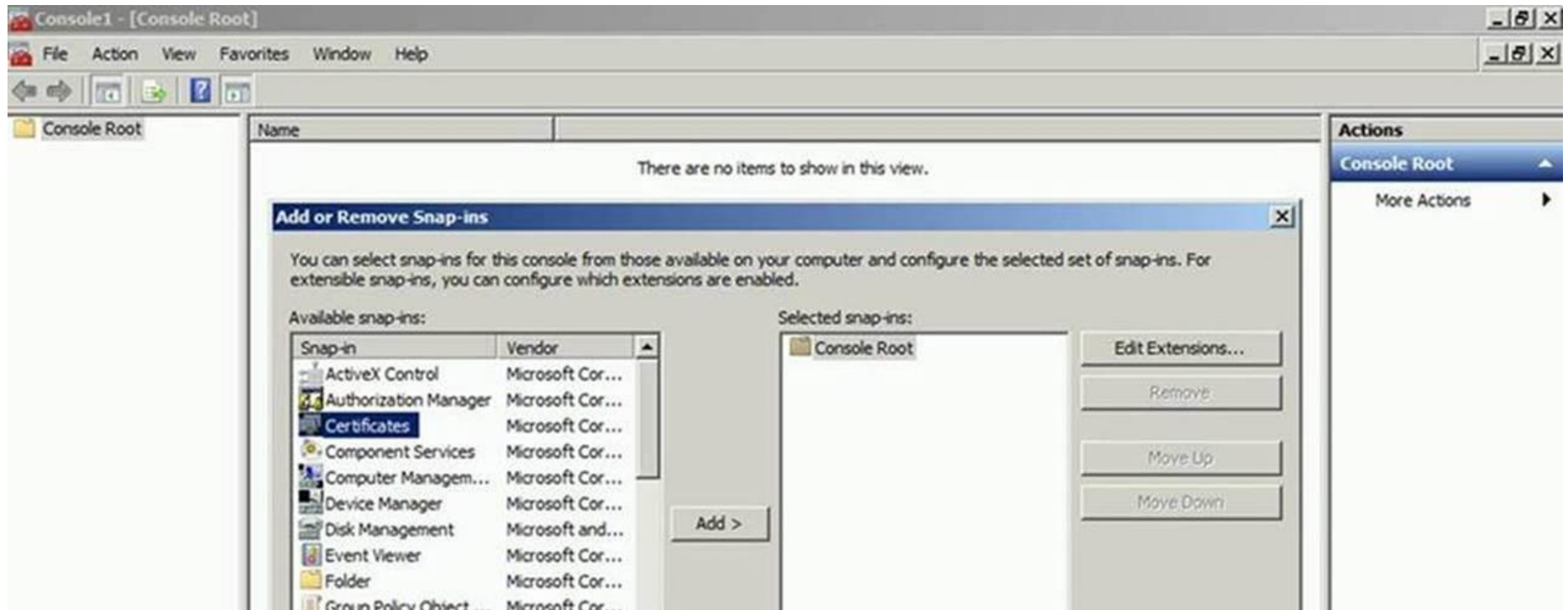
4. Microsoft Management Console opens with an empty console as shown in the below screenshot



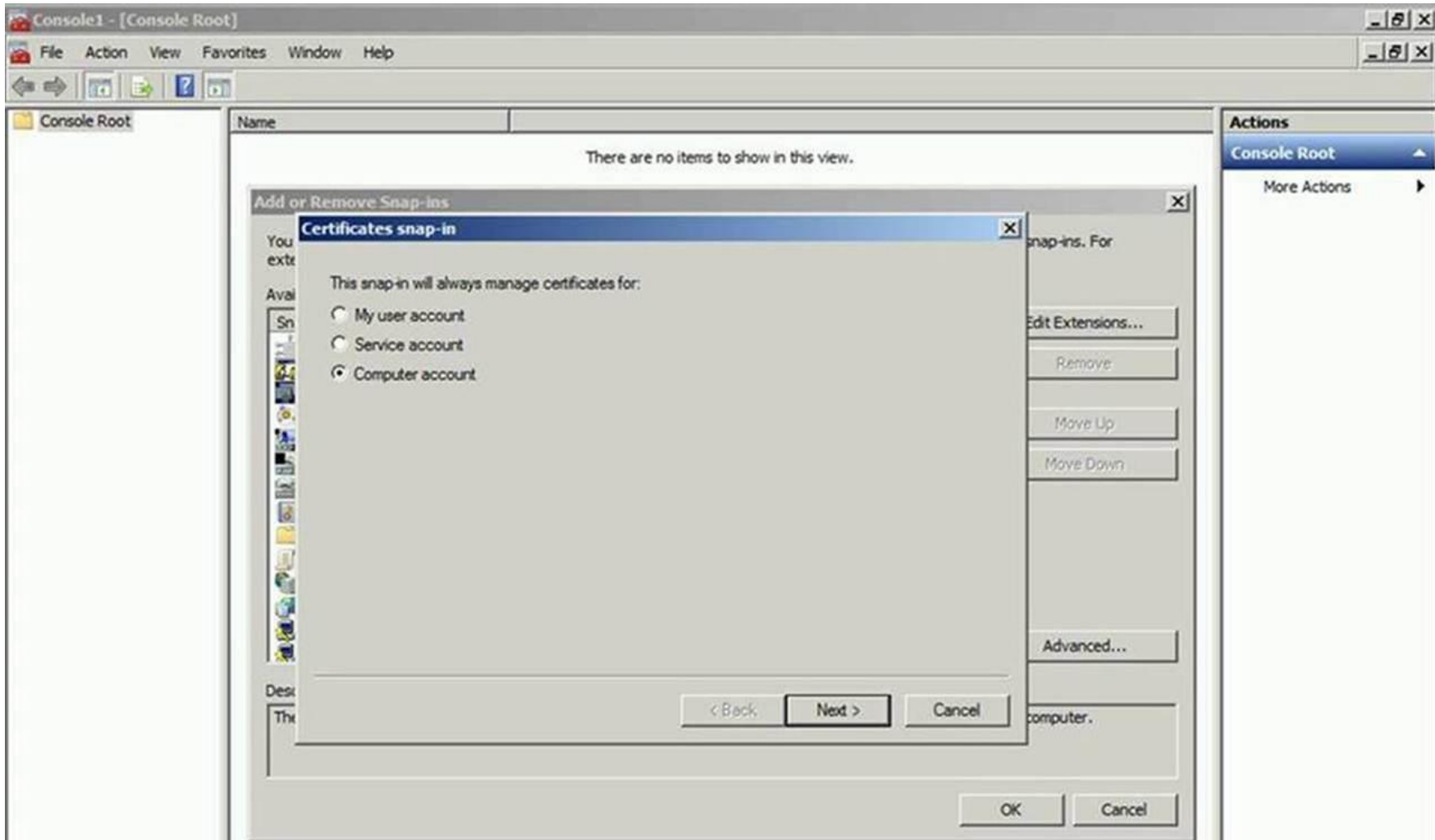
5. Go to File Menu and click **Add/Remove Snap-in**. The Add/Remove Snap-in dialog box opens.



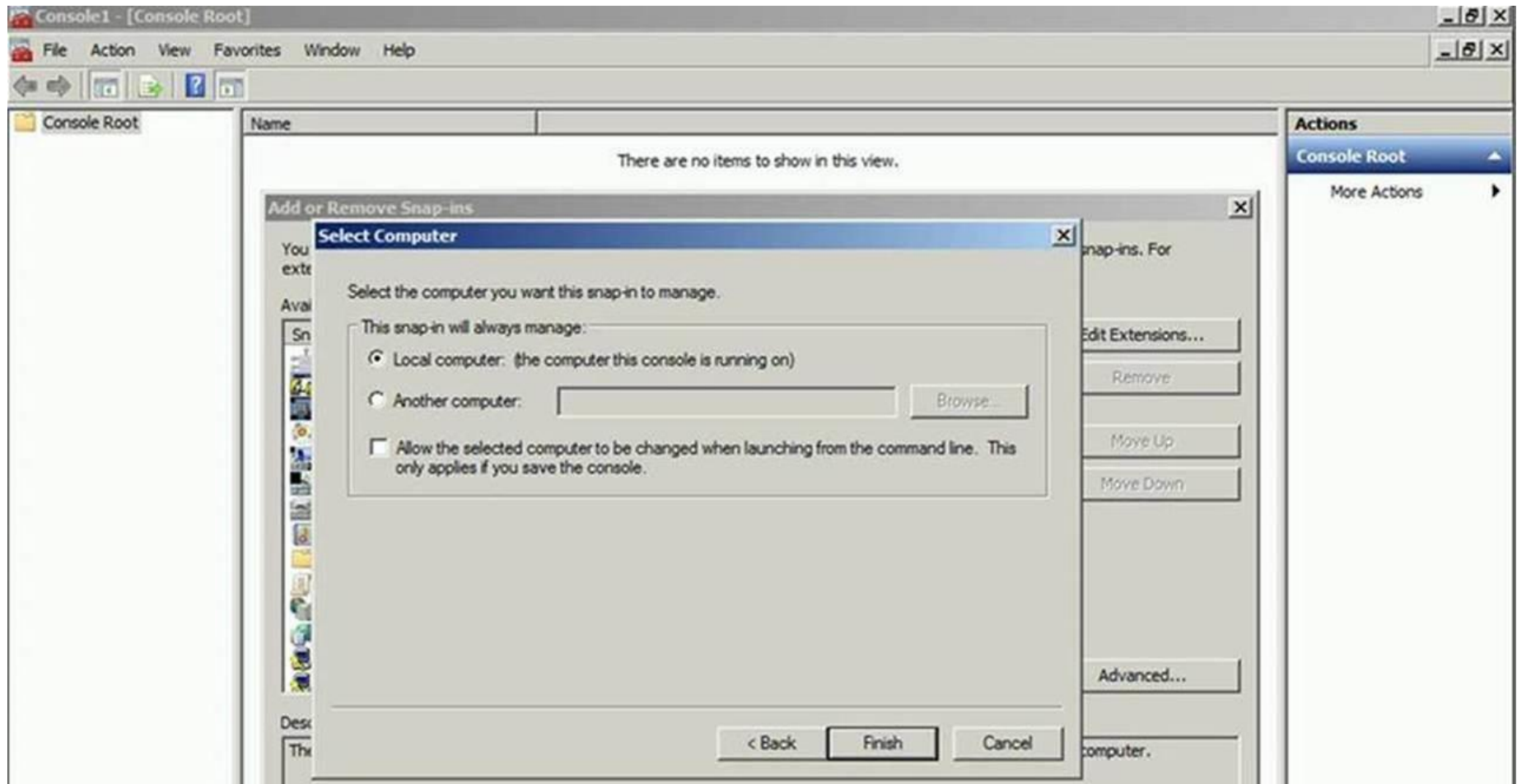
6. Select "Certificates" snap-in from the available snap-ins list and click on "Add>" button. The certificates snap-in window opens



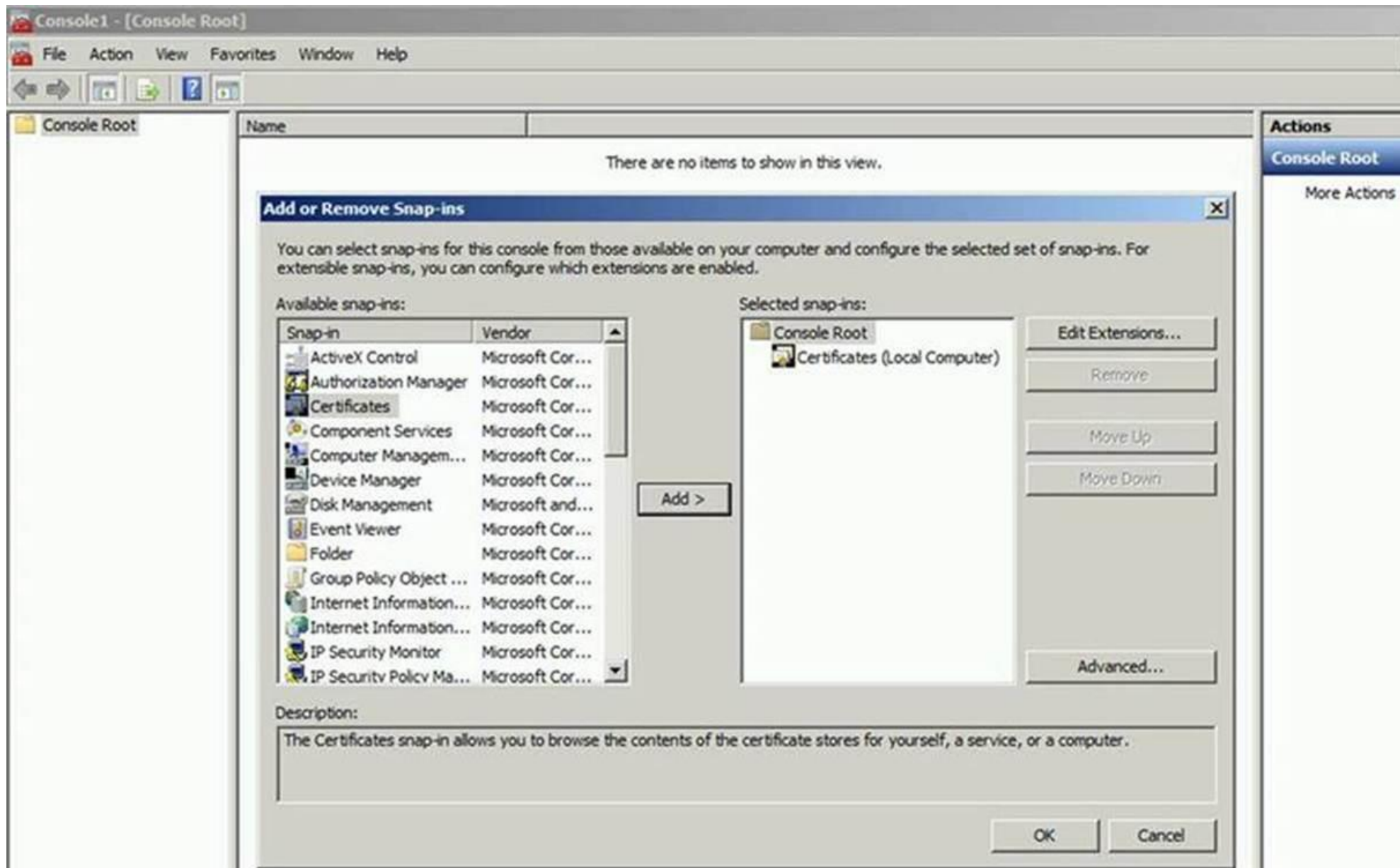
7. Select "Computer Account" option on the below window and click on "Next >" button. The "Select Computer" window opens



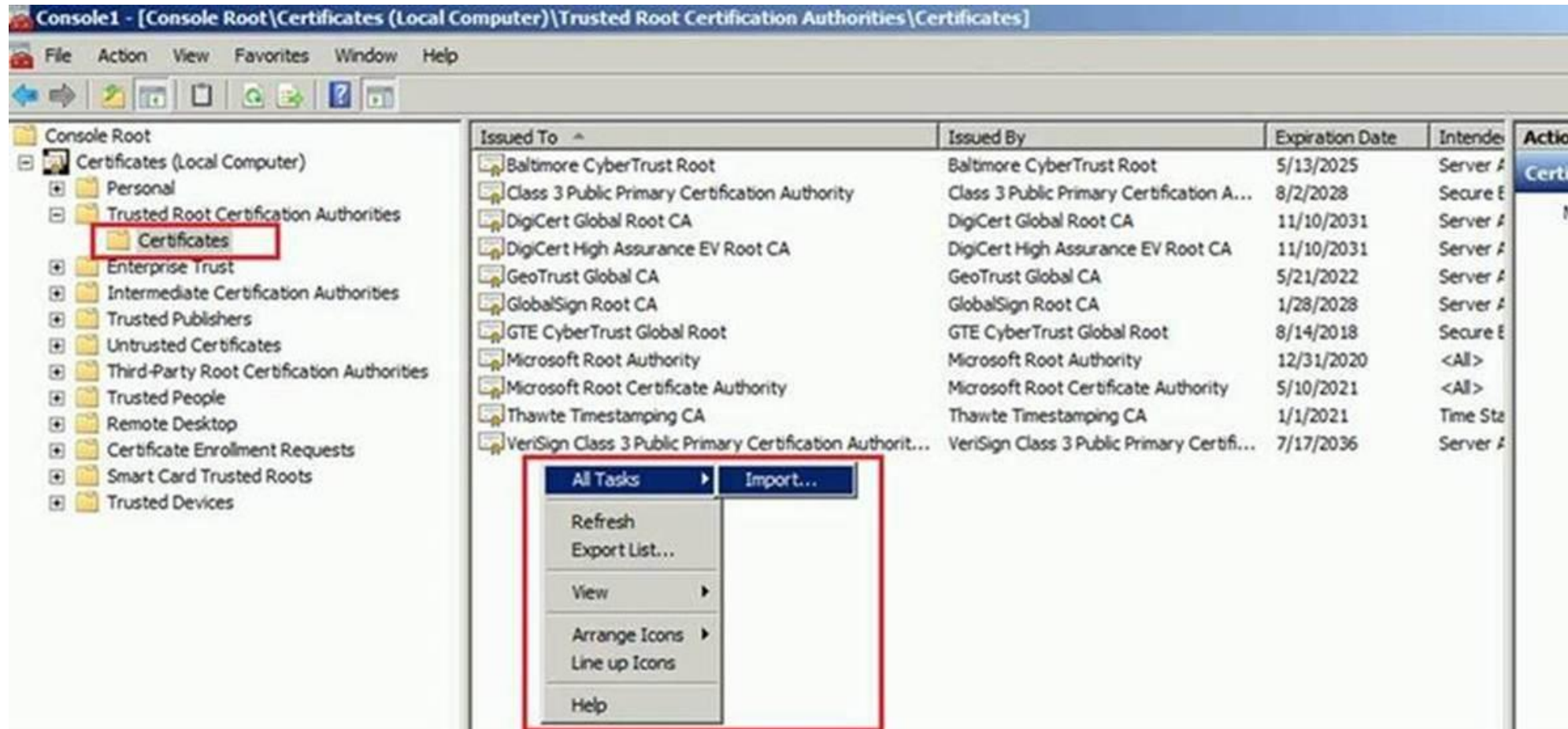
8. Select "Local Computer" option on the below window and click on "Finish" button



9. Once the window below is shown, click on the "OK" button

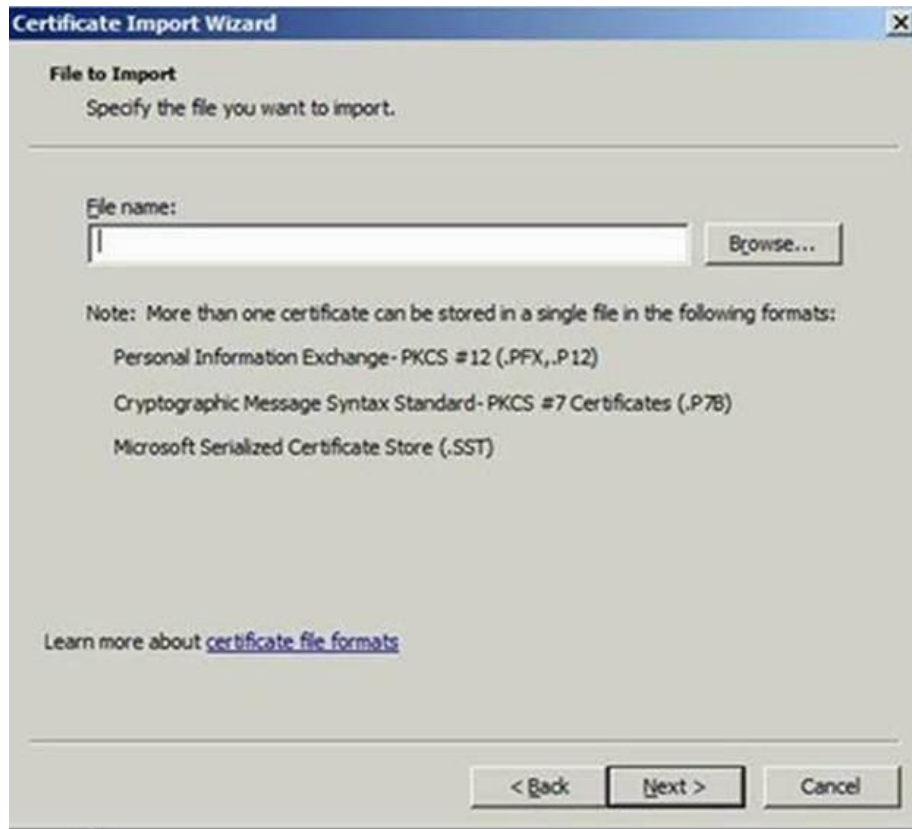


10. Right click on the right pane and select "All Tasks" -> "Import..." as per the screen below,

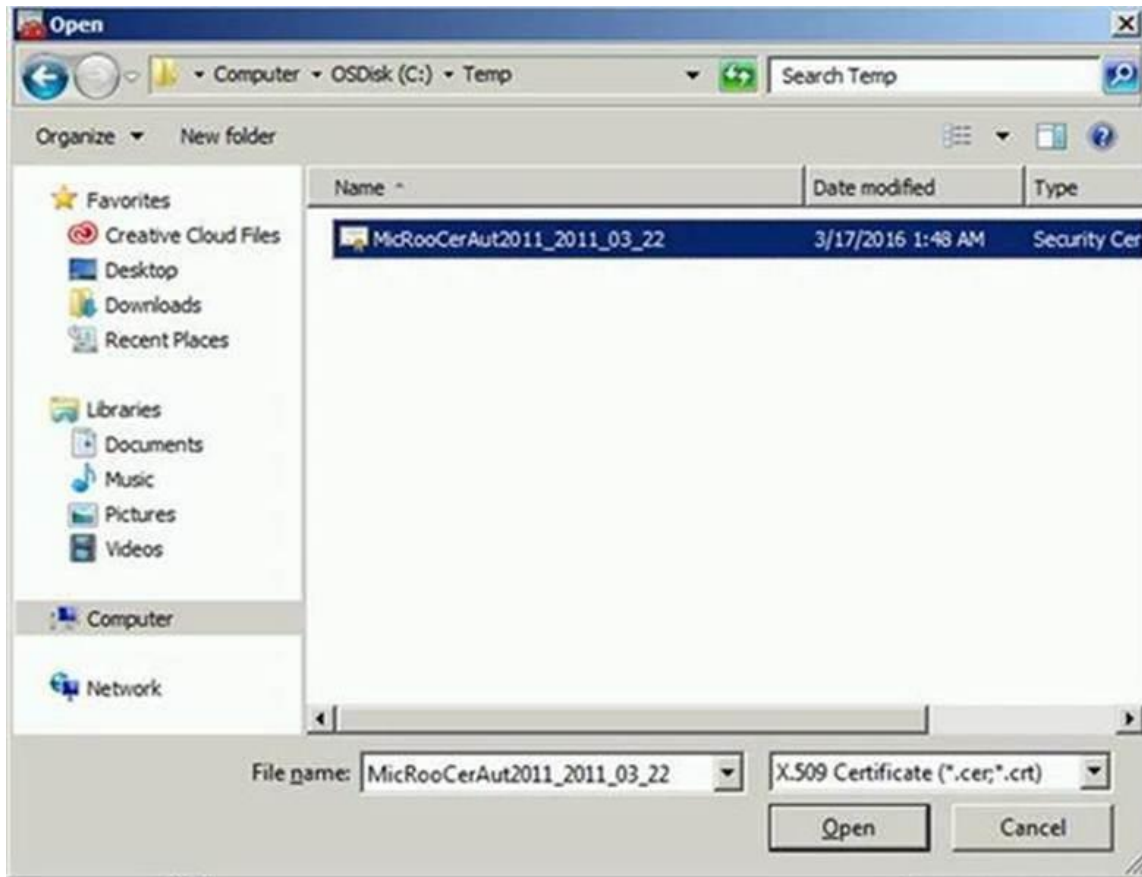


11. Click on “Next”

12. Click on “Browse”



13. Select the “MicRooCerAut2011_2011_03_22.cer” file from the C:\Temp folder and click on “Open”



14. Click “Next”

15. Click “Next” to Import the certificate



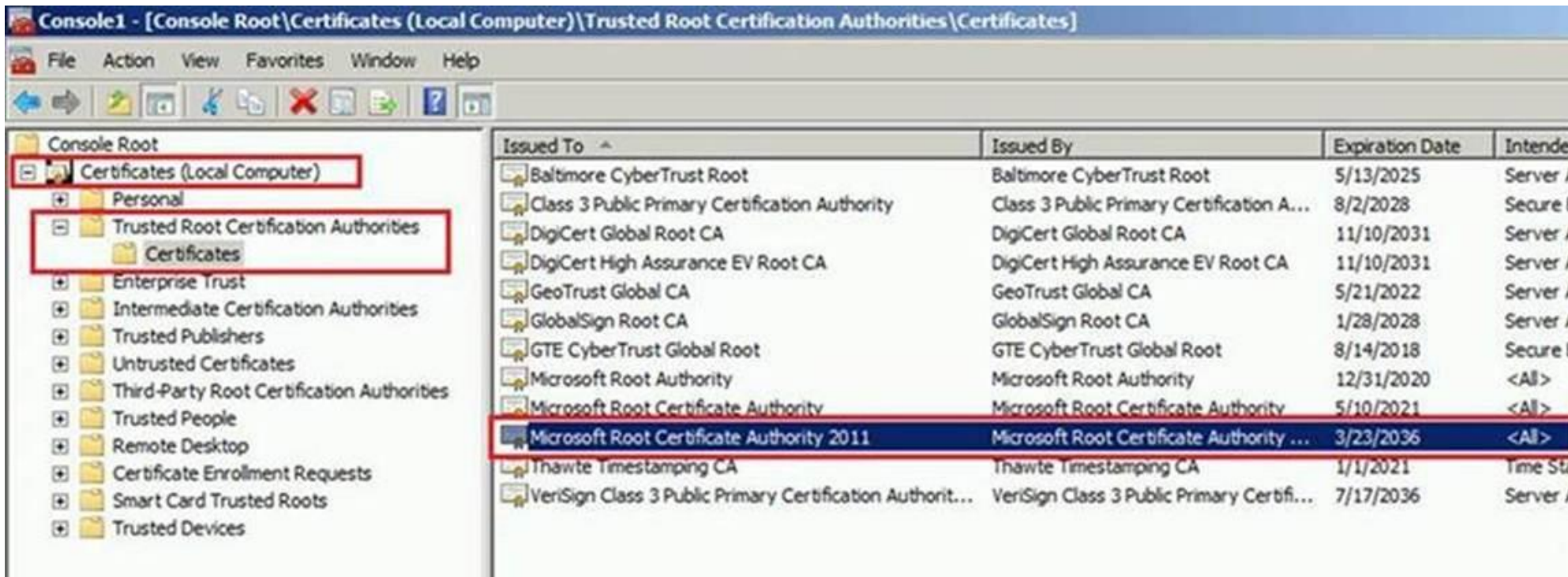
16. Click on "Finish"



17. Click on "OK"



18. The “**Microsoft Root Certificate Authority 2011**” certificate has successfully imported under “Certificates -> Trusted Root Certification Authorities -> Certificates”



19. Exit the MMC.